

KANSAS CORPORATION COMMISSION
OIL & GAS CONSERVATION DIVISION

TEMPORARY ABANDONMENT WELL APPLICATION

OPERATOR: License# _____
 Name: _____
 Address 1: _____
 Address 2: _____
 City: _____ State: _____ Zip: _____ + _____
 Contact Person: _____
 Phone: (_____) _____
 Contact Person Email: _____
 Field Contact Person: _____
 Field Contact Person Phone: (_____) _____

API No. 15- _____
 Spot Description: _____
 _____ - _____ - _____ - _____ Sec. _____ Twp. _____ S. R. _____ E W
 _____ feet from N / S Line of Section
 _____ feet from E / W Line of Section
 GPS Location: Lat: _____, Long: _____
(e.g. xx.xxxxx) (e.g. -xxx.xxxxx)
 Datum: NAD27 NAD83 WGS84
 County: _____ Elevation: _____ GL KB
 Lease Name: _____ Well #: _____
 Well Type: (check one) Oil Gas OG WSW Other: _____
 SWD Permit #: _____ ENHR Permit #: _____
 Gas Storage Permit #: _____
 Spud Date: _____ Date Shut-In: _____

	Conductor	Surface	Production	Intermediate	Liner	Tubing
Size						
Setting Depth						
Amount of Cement						
Top of Cement						
Bottom of Cement						

Casing Fluid Level from Surface: _____ How Determined? _____ Date: _____
 Casing Squeeze(s): _____ to _____ w / _____ sacks of cement, _____ to _____ w / _____ sacks of cement. Date: _____
(top) (bottom) (top) (bottom)
 Do you have a valid Oil & Gas Lease? Yes No
 Depth and Type: Junk in Hole at _____ Tools in Hole at _____ Casing Leaks: Yes No Depth of casing leak(s): _____
(depth) (depth)
 Type Completion: ALT. I ALT. II Depth of: DV Tool: _____ w / _____ sacks of cement Port Collar: _____ w / _____ sack of cement
(depth) (depth)
 Packer Type: _____ Size: _____ Inch Set at: _____ Feet
 Total Depth: _____ Plug Back Depth: _____ Plug Back Method: _____

Geological Data:

Formation Name	Formation Top	Formation Base	Completion Information
1. _____	At: _____	to _____ Feet	Perforation Interval _____ to _____ Feet or Open Hole Interval _____ to _____ Feet
2. _____	At: _____	to _____ Feet	Perforation Interval _____ to _____ Feet or Open Hole Interval _____ to _____ Feet

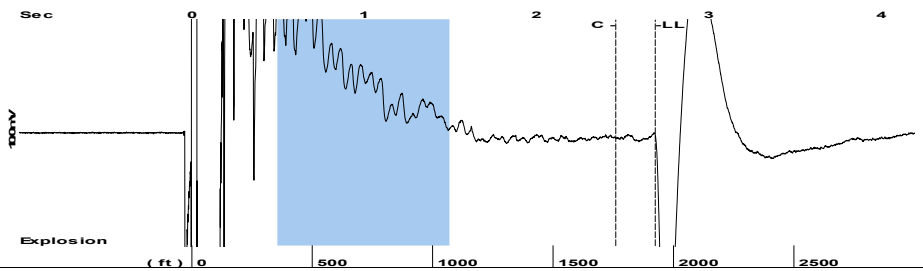
UNDER PENALTY OF PERJURY I HEREBY ATTEST THAT THE INFORMATION CONTAINED HEREIN IS TRUE AND CORRECT TO THE BEST OF MY KNOWLEDGE

Submitted Electronically

Do NOT Write in This Space - KCC USE ONLY	Date Tested: _____	Results: _____	Date Plugged: _____	Date Repaired: _____	Date Put Back in Service: _____
	Review Completed by: _____ Comments: _____				
TA Approved: <input type="checkbox"/> Yes <input type="checkbox"/> Denied Date: _____					

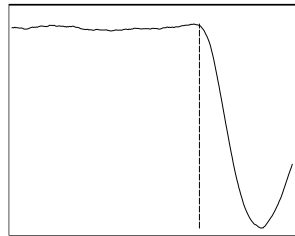
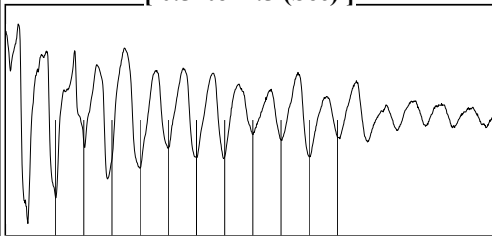
Mail to the Appropriate KCC Conservation Office:

	KCC District Office #1 - 210 E. Frontview, Suite A, Dodge City, KS 67801	Phone 620.682.7933
	KCC District Office #2 - 3450 N. Rock Road, Building 600, Suite 601, Wichita, KS 67226	Phone 316.337.7400
	KCC District Office #3 - 137 E. 21st St., Chanute, KS 66720	Phone 620.902.6450
	KCC District Office #4 - 2301 E. 13th Street, Hays, KS 67601-2651	Phone 785.261.6250



Filter Type High Pass Automatic Collar Count Yes Time 2.689 sec
 Manual Acoustic Veloc 1450.78 ft/s Manual JTS/sec 17.2712 Joints 45.8071 Jts
 Depth 1923.90 ft

[0.5 to 1.5 (Sec)]

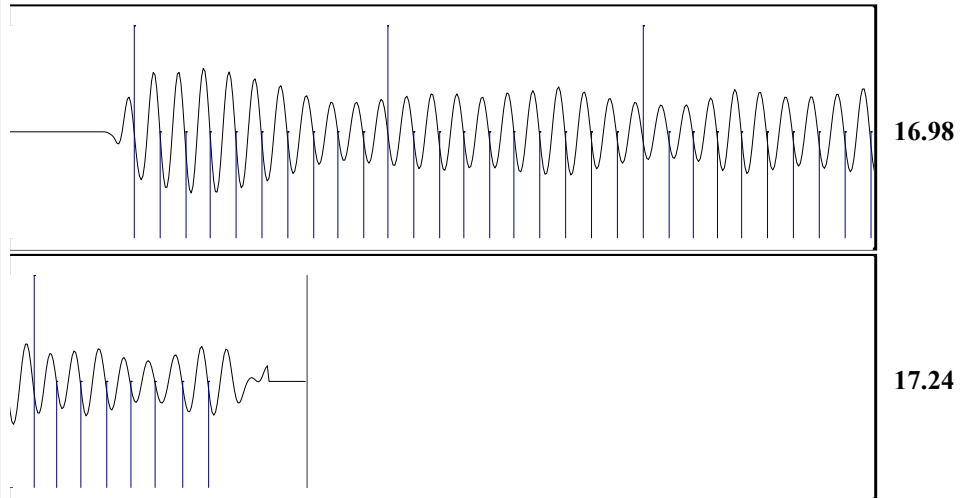


Analysis Method: Automatic



Change in Pressure -0.00 psi PT16854
 Range 0 - ? psi
 Change in Time 0.25 min

Production	Potential	Casing Pressure	Producing
Current			
Oil - * -	- * - BBL/D	-0.1 psi (g)	
Water - * -	- * - BBL/D	Casing Pressure Buildup	Annular Gas Flow - * - Mscf/D
Gas - * -	- * - Mscf/D	-0.001 psi	% Liquid 100 %
		0.25 min	
IPR Method	Vogel	Gas/Liquid Interface Pressure	
PBHP/SBHP	- * -	0.5 psi (g)	
Production Efficiency	0.0		
		Liquid Level Depth	
Oil 40 deg.API		1923.90 ft	
Water 1.05 Sp.Gr.H2O		Pump Intake Depth	
Gas 0.60 Sp.Gr.AIR		- * - ft	
Acoustic Velocity	1430.94 ft/s	Formation Depth	
		2800.00 ft	
Formation Submergence			Pump Intake
Total Gaseous Liquid Column HT (TVD)	876 ft		- * - psi (g)
Equivalent Gas Free Liquid HT (TVD)	876 ft		Producing BHP
			398.8 psi (g)
			Static BHP
			- * - psi (g)



Acoustic Velocity 1430.94 ft/s Joints counted 37
 Joints Per Second 17.035 jts/sec Joints to liquid level 45.8071
 Depth to liquid level 1923.9 ft Filter Width 15.2712 19.2712
 Automatic Collar Count Yes Time to 1st Collar 0.288 2.46

12/04/2023

Zach Patterson
Patterson Energy LLC
PO BOX 400
HAYS, KS 67601-0400

Re: Temporary Abandonment
API 15-051-24497-00-00
SMITH A 14
NE/4 Sec.14-12S-16W
Ellis County, Kansas

Dear Zach Patterson:

"Your temporary abandonment (TA) application for the well listed above has been approved. In accordance with K.A.R. 82-3-111 the TA status of this well will expire 12/04/2024.

- * If you return this well to service or plug it, please notify the District Office.
- * If you sell this well you are required to file a Transfer of Operator form, T-1.
- * If the well will remain temporarily abandoned, you must submit a new TA application, CP-111, before 12/04/2024.

You may contact me at the number above if you have questions.

Very truly yours,

RICHARD WILLIAMS"