

KANSAS CORPORATION COMMISSION
OIL & GAS CONSERVATION DIVISION

TEMPORARY ABANDONMENT WELL APPLICATION

OPERATOR: License#
Name:
Address 1:
Address 2:
City: State: Zip:
Contact Person:
Phone:
Contact Person Email:
Field Contact Person:
Field Contact Person Phone:

API No. 15-
Spot Description:
Sec. Twp. S. R.
feet from N / S Line of Section
feet from E / W Line of Section
GPS Location: Lat: , Long:
Datum: NAD27 NAD83 WGS84
County: Elevation: GL KB
Lease Name: Well #:
Well Type: (check one) Oil Gas OG WSW Other:
SWD Permit #: ENHR Permit #:
Gas Storage Permit #:
Spud Date: Date Shut-In:

Table with 7 columns: Conductor, Surface, Production, Intermediate, Liner, Tubing. Rows include Size, Setting Depth, Amount of Cement, Top of Cement, Bottom of Cement.

Casing Fluid Level from Surface: How Determined? Date:
Casing Squeeze(s): to w / sacks of cement, to w / sacks of cement. Date:
Do you have a valid Oil & Gas Lease? Yes No
Depth and Type: Junk in Hole at Tools in Hole at Casing Leaks: Yes No Depth of casing leak(s):
Type Completion: ALT. I ALT. II Depth of: DV Tool: w / sacks of cement Port Collar: w / sack of cement
Packer Type: Size: Inch Set at: Feet
Total Depth: Plug Back Depth: Plug Back Method:

Geological Data:

Table with 4 columns: Formation Name, Formation Top, Formation Base, Completion Information. Rows 1 and 2.

UNDER PENALTY OF PERJURY I HEREBY ATTEST THAT THE INFORMATION CONTAINED HEREIN IS TRUE AND CORRECT TO THE BEST OF MY KNOWLEDGE

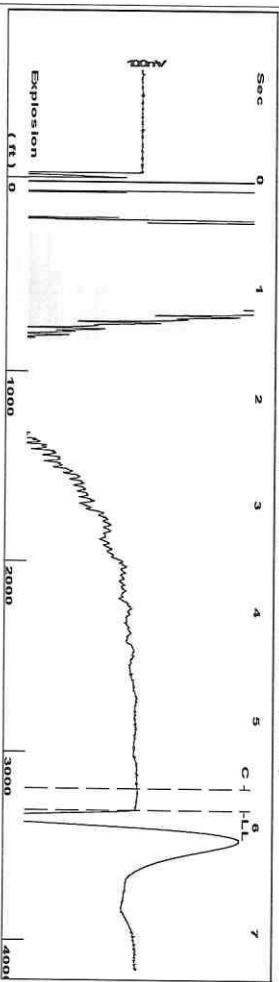
Submitted Electronically

Do NOT Write in This Space - KCC USE ONLY
Date Tested: Results: Date Plugged: Date Repaired: Date Put Back in Service:
Review Completed by: Comments:
TA Approved: Yes Denied Date:

Mail to the Appropriate KCC Conservation Office:

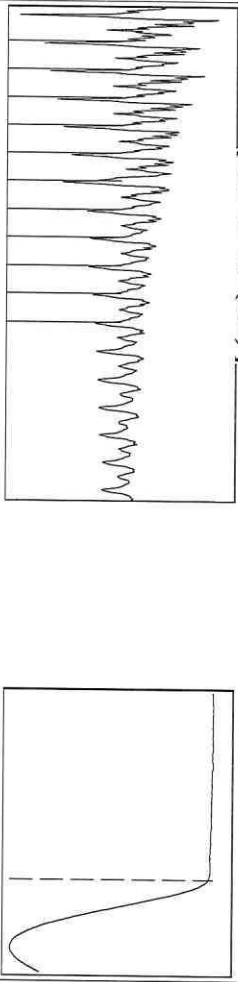
Table with 3 columns: District Office #, Address, Phone. Rows 1-4.

Group: Atlas Well: Ben Swingle 4 (acquired on: 10/16/23 14:10:13)



Filter Type High Pass Automatic Collar Count Yes
 Manual Acoustic Veloc 1116.2 ft/s Manual JTS/sec 17.6056
 Time 5.854 sec
 Joints 104.303 Jts
 Depth 3306.40 ft

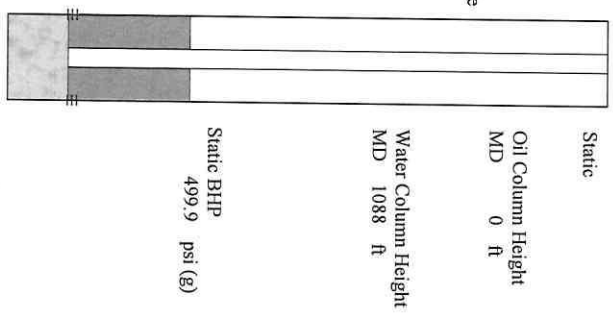
[0.5 to 1.5 (Sec)]



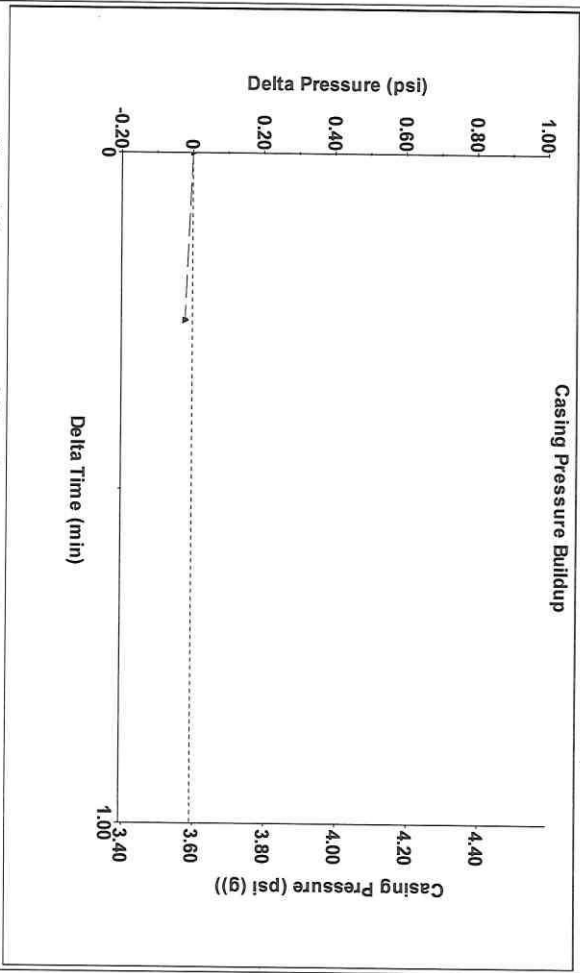
Analysis Method: Automatic

Group: Atlas Well: Ben Swingle 4 (acquired on: 10/16/23 14:10:13)

Production Current	Potential	Casing Pressure	Static
Oil - * -	- * - BBL/D	3.6 psi (g)	Oil Column Height
Water - * -	- * - BBL/D	-0.021 psi	MD 0 ft
Gas - * -	- * - Misc/D	0.25 min	Gas/Liquid Interface Pressure
IPR Method	Vogel	5.4 psi (g)	
PBHP/SBHP	- * -		
Production Efficiency	0.0		
Oil 40 deg API		Liquid Level Depth	Water Column Height
Water 1.05 Sp.Gr.H2O		3306.40 ft	MD 1088 ft
Gas 0.86 Sp.Gr.AIR		Pump Intake Depth	
		4441.00 ft	
		Formation Depth	
		4402.00 ft	
Acoustic Velocity	1129.62 ft/s		

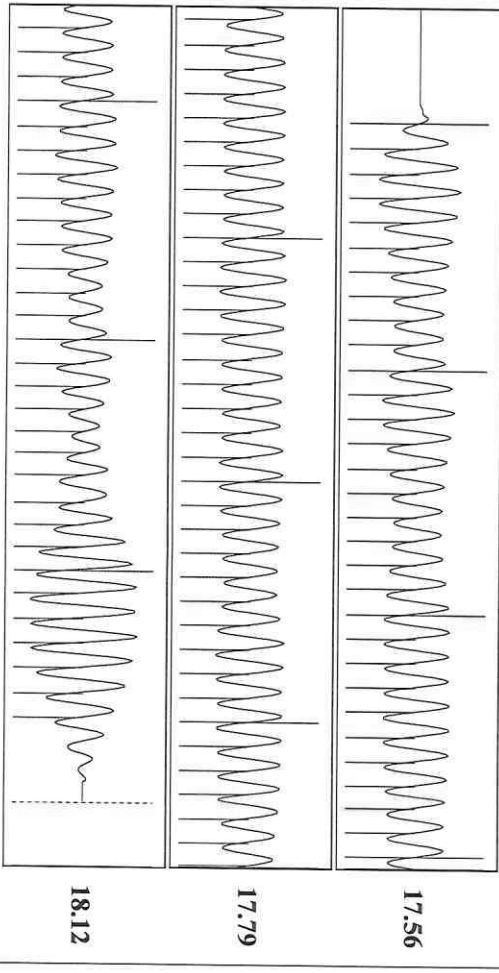


Group: Atlas Well: Ben Swingle 4 (acquired on: 10/16/23 14:10:13)



Change in Pressure -0.02 psi PT14212
 Change in Time 0.25 min Range 0 - ? psi

Group: Atlas Well: Ben Swingle 4 (acquired on: 10/16/23 14:10:13)



Acoustic Velocity 1129.62 ft/s Joints counted 96
 Joints Per Second 17.8174 Jts/sec Joints to liquid level 104.303
 Depth to liquid level 3306.4 ft Filter Width 15.6056
 Automatic Collar Count Yes Time to 1st Collar 0.264

Conservation Division
District Office No. 2
3450 N. Rock Road
Building 600, Suite 601
Wichita, KS 67226



Phone: 316-337-7400
<http://kcc.ks.gov/>

Andrew J. French, Chairperson
Dwight D. Keen, Commissioner
Annie Kuether, Commissioner

Laura Kelly, Governor

12/05/2023

Saumyadeep Halder
Atlas Operating LLC
1900 ST JAMES PLACE SUITE 800
HOUSTON, TX 77056-4133

Re: Temporary Abandonment
API 15-095-21735-00-00
BEN SWINGLE 4
NE/4 Sec.36-30S-09W
Kingman County, Kansas

Dear Saumyadeep Halder:

"Your temporary abandonment (TA) application for the well listed above has been approved. In accordance with K.A.R. 82-3-111 the TA status of this well will expire 10/05/2024.

- * If you return this well to service or plug it, please notify the District Office.
- * If you sell this well you are required to file a Transfer of Operator form, T-1.
- * If the well will remain temporarily abandoned, you must submit a new TA application, CP-111, before 10/05/2024.

You may contact me at the number above if you have questions.

Very truly yours,

Jeff Klock, District Supervisor"