

KANSAS CORPORATION COMMISSION
OIL & GAS CONSERVATION DIVISION

Form must be Typed
Form must be signed

TEMPORARY ABANDONMENT WELL APPLICATION

All blanks must be complete

OPERATOR: License#
Name:
Address 1:
Address 2:
City: State: Zip:
Contact Person:
Phone:
Contact Person Email:
Field Contact Person:
Field Contact Person Phone:

API No. 15-
Spot Description:
Sec. Twp. S. R.
GPS Location: Lat, Long
Datum: NAD27, NAD83, WGS84
County: Elevation:
Lease Name: Well #:
Well Type: Oil, Gas, OG, WSW, Other
SWD Permit #: ENHR Permit #:
Gas Storage Permit #:
Spud Date: Date Shut-In:

Table with 7 columns: Conductor, Surface, Production, Intermediate, Liner, Tubing. Rows include Size, Setting Depth, Amount of Cement, Top of Cement, Bottom of Cement.

Casing Fluid Level from Surface: How Determined? Date:
Casing Squeeze(s): to w / sacks of cement, to w / sacks of cement. Date:
Do you have a valid Oil & Gas Lease? Yes No
Depth and Type: Junk in Hole at Tools in Hole at Casing Leaks: Yes No Depth of casing leak(s):
Type Completion: ALT. I ALT. II Depth of: DV Tool: w / sacks of cement Port Collar: w / sack of cement
Packer Type: Size: Inch Set at: Feet
Total Depth: Plug Back Depth: Plug Back Method:

Geological Data:

Table with 4 columns: Formation Name, Formation Top, Formation Base, Completion Information. Rows 1 and 2.

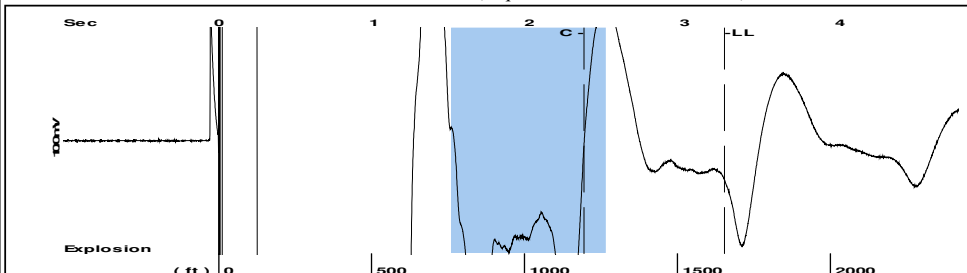
UNDER PENALTY OF PERJURY I HEREBY ATTEST THAT THE INFORMATION CONTAINED HEREIN IS TRUE AND CORRECT TO THE BEST OF MY KNOWLEDGE

Submitted Electronically

Do NOT Write in This Space - KCC USE ONLY
Date Tested: Results: Date Plugged: Date Repaired: Date Put Back in Service:
Review Completed by: Comments:
TA Approved: Yes Denied Date:

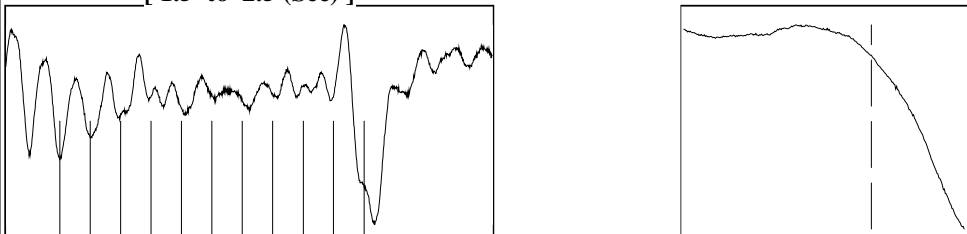
Mail to the Appropriate KCC Conservation Office:

Table with 3 columns: District Office #, Address, Phone. Rows 1-4.

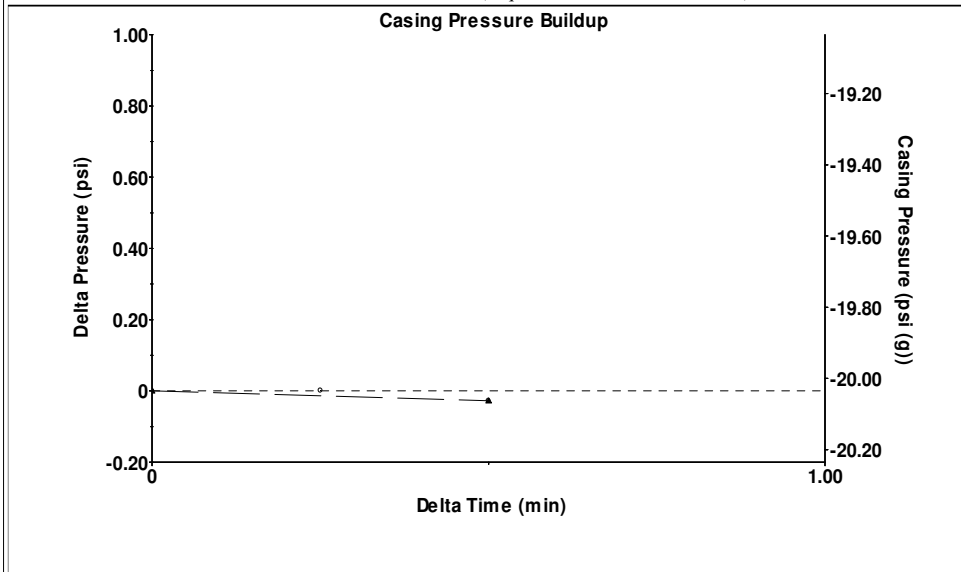


Filter Type High Pass Automatic Collar Count Yes Time 3.258 sec  
 Manual Acoustic Velocity 1014.4 ft/s Manual JTS/sec 16 Joints 52.1744 Jts  
 Depth 1653.93 ft

[ 1.5 to 2.5 (Sec) ]



**Analysis Method: Automatic**



Change in Pressure -0.03 psi PT12363  
 Change in Time 0.50 min Range 0 - ? psi

<b>Production</b>	<b>Potential</b>	<b>Casing Pressure</b>	<b>Producing</b>
Current		-14.7 psi (g)	
Oil - * -	- * - BBL/D	<b>Casing Pressure Buildup</b>	<b>Annular Gas Flow</b>
Water - * -	- * - BBL/D	-0.0 psi	- * - Mscf/D
Gas - * -	- * - Mscf/D	0.50 min	<b>% Liquid</b>
		<b>Gas/Liquid Interface Pressure</b>	100 %
		- * - psi (g)	
<b>IPR Method</b>	<b>Vogel</b>	<b>Liquid Level Depth</b>	
PBHP/SBHP	- * -	1653.93 ft	
Production Efficiency	0.0	<b>Pump Intake Depth</b>	
		3300.00 ft	
Oil 40 deg.API		<b>Formation Depth</b>	
Water 1.05 Sp.Gr.H2O		3300.00 ft	
Gas 0.70 Sp.Gr.AIR			
<b>Acoustic Velocity</b>	<b>1015.3 ft/s</b>		
<b>Formation Submergence</b>			
Total Gaseous Liquid Column HT (TVD)	- * - ft		
Equivalent Gas Free Liquid HT (TVD)	- * - ft		
<b>Acoustic Test</b>			

<b>Acoustic Velocity</b>	<b>1015.3 ft/s</b>	<b>Joints counted</b>	18
<b>Joints Per Second</b>	16.0142 jts/sec	<b>Joints to liquid level</b>	52.1744
<b>Depth to liquid level</b>	1653.93 ft	<b>Filter Width</b>	14
<b>Automatic Collar Count</b>	Yes	<b>Time to 1st Collar</b>	1.228 2.352

Conservation Division  
District Office No. 1  
210 E. Frontview, Suite A  
Dodge City, KS 67801



Phone: 620-682-7933  
<http://kcc.ks.gov/>

Andrew J. French, Chairperson  
Dwight D. Keen, Commissioner  
Annie Kuether, Commissioner

Laura Kelly, Governor

12/07/2023

coleman townes  
Vess Oil Corporation  
1700 N WATERFRONT PKWY BLDG 500  
WICHITA, KS 67206-6619

Re: Temporary Abandonment  
API 15-185-22652-00-00  
BEAVER 5  
SW/4 Sec.09-23S-14W  
Stafford County, Kansas

Dear coleman townes:

"Your temporary abandonment (TA) application for the well listed above has been approved. In accordance with K.A.R. 82-3-111 the TA status of this well will expire 12/07/2024.

- \* If you return this well to service or plug it, please notify the District Office.
- \* If you sell this well you are required to file a Transfer of Operator form, T-1.
- \* If the well will remain temporarily abandoned, you must submit a new TA application, CP-111, before 12/07/2024.

You may contact me at the number above if you have questions.

Very truly yours,

Michael Maier"