

KANSAS CORPORATION COMMISSION
OIL & GAS CONSERVATION DIVISION

Form must be Typed
Form must be signed

TEMPORARY ABANDONMENT WELL APPLICATION

All blanks must be complete

OPERATOR: License#
Name:
Address 1:
Address 2:
City: State: Zip:
Contact Person:
Phone:
Contact Person Email:
Field Contact Person:
Field Contact Person Phone:

API No. 15-
Spot Description:
Sec. Twp. S. R.
feet from N / S Line of Section
feet from E / W Line of Section
GPS Location: Lat: , Long:
Datum: NAD27 NAD83 WGS84
County: Elevation: GL KB
Lease Name: Well #:
Well Type: Oil Gas OG WSW Other:
SWD Permit #: ENHR Permit #:
Gas Storage Permit #:
Spud Date: Date Shut-In:

Table with 7 columns: Conductor, Surface, Production, Intermediate, Liner, Tubing. Rows include Size, Setting Depth, Amount of Cement, Top of Cement, Bottom of Cement.

Casing Fluid Level from Surface: How Determined? Date:
Casing Squeeze(s): to w / sacks of cement, to w / sacks of cement. Date:
Do you have a valid Oil & Gas Lease? Yes No
Depth and Type: Junk in Hole at Tools in Hole at Casing Leaks: Yes No Depth of casing leak(s):
Type Completion: ALT. I ALT. II Depth of: DV Tool: w / sacks of cement Port Collar: w / sack of cement
Packer Type: Size: Inch Set at: Feet
Total Depth: Plug Back Depth: Plug Back Method:

Geological Data:

Table with 4 columns: Formation Name, Formation Top, Formation Base, Completion Information. Rows 1 and 2.

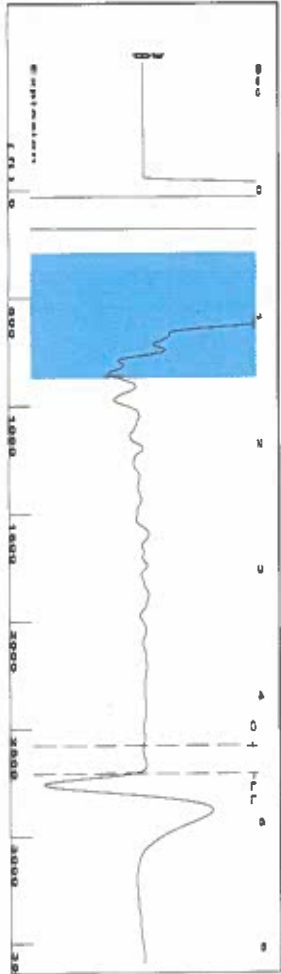
UNDER PENALTY OF PERJURY I HEREBY ATTEST THAT THE INFORMATION CONTAINED HEREIN IS TRUE AND CORRECT TO THE BEST OF MY KNOWLEDGE

Submitted Electronically

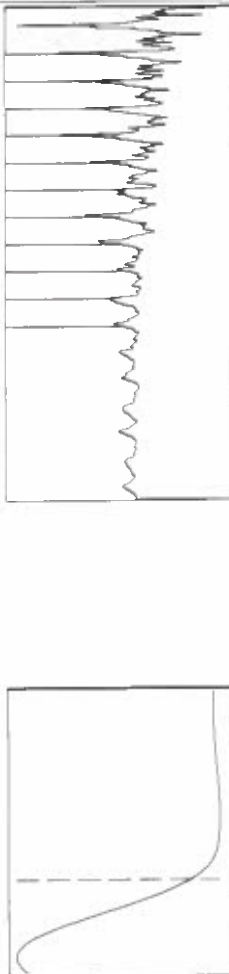
Do NOT Write in This Space - KCC USE ONLY
Date Tested: Results: Date Plugged: Date Repaired: Date Put Back in Service:
Review Completed by: Comments:
TA Approved: Yes Denied Date:

Mail to the Appropriate KCC Conservation Office:

Table with 3 columns: District Office, Address, Phone. Rows for District Office #1, #2, #3, #4.



Filter Type High Pass Automatic Collar Count Yes
 Manual Acoustic Velocity 1152.73 N/s Manual JTS/sec 18.1818
 Time 4.62 sec
 Joints 85.4722 Jts
 Depth 2709.47 ft



Analysis Method: Automatic

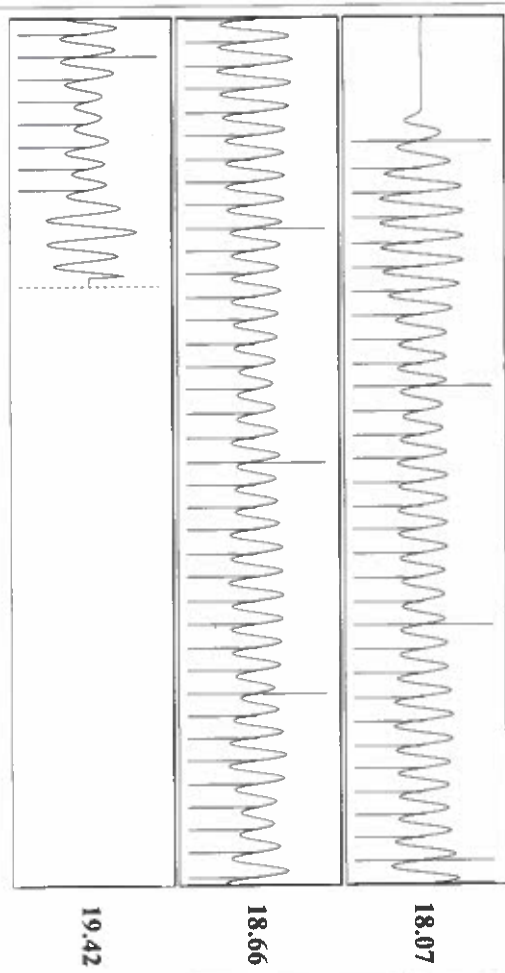
Group: Merit Energy Company-Ulysses Well: Emrie B-2 (acquired on: 12/05/23 13:57:39)

Production Current	Potential	Casing Pressure	Producing
Oil *	BBL/D	0.2 psi (g)	Pump Intake
Water *	BBL/D	Casing Pressure Buildup	69.3 psi (g)
Gas *	Mscf/D	0.023 psi	Producing BHP
		4.25 min	85.2 psi (g)
IPR Method	Vogel	Gas/Liquid Interface Pressure	Static BHP
PBHP/SBHP		1.3 psi (g)	
Production Efficiency			
Oil 40 deg API		Liquid Level Depth	
Water 1.05 Sp.Gr:H2O		2709.47 ft	
Gas 0.83 Sp.Gr:AIR		Pump Intake Depth	
		2909.00 ft	
Acoustic Velocity	1172.93 N/s	Formation Depth	
		2944.00 ft	
Formation Submergence			
Total Gaseous Liquid Column HT (TVD)			
Equivalent Gas Free Liquid HT (TVD)			
12/5/23			



Change in Pressure 0.02 psi PTT18865
 Change in Time 4.25 min Range 0 - 7 psi

Group: Merit Energy Company-Ulysses Well: Emrie B-2 (acquired on: 12/05/23 13:57:39)



Acoustic Velocity 1172.93 N/s Joints counted 76
 Joints Per Second 18.5005 Jts/Sec Joints to liquid level 85.4722
 Depth to liquid level 2709.47 ft Filter Width 16.1818
 Automatic Collar Count Yes Time to 1st Collar 0.288

12/07/2023

Katherine McClurkan
Merit Energy Company, LLC
13727 Noel Road, Suite 1200
Dallas, TX 75240

Re: Temporary Abandonment
API 15-067-20487-00-00
Emrie B 2
NE/4 Sec.27-28S-35W
Grant County, Kansas

Dear Katherine McClurkan:

"Your temporary abandonment (TA) application for the well listed above has been approved. In accordance with K.A.R. 82-3-111 the TA status of this well will expire 12/07/2024.

- * If you return this well to service or plug it, please notify the District Office.
- * If you sell this well you are required to file a Transfer of Operator form, T-1.
- * If the well will remain temporarily abandoned, you must submit a new TA application, CP-111, before 12/07/2024.

You may contact me at the number above if you have questions.

Very truly yours,

Michael Maier"