

KANSAS CORPORATION COMMISSION
OIL & GAS CONSERVATION DIVISION

TEMPORARY ABANDONMENT WELL APPLICATION

OPERATOR: License#
Name:
Address 1:
Address 2:
City: State: Zip:
Contact Person:
Phone:
Contact Person Email:
Field Contact Person:
Field Contact Person Phone:

API No. 15-
Spot Description:
Sec. Twp. S. R.
GPS Location: Lat: Long:
Datum: NAD27 NAD83 WGS84
County: Elevation:
Lease Name: Well #:
Well Type: Oil Gas OG WSW Other:
SWD Permit #: ENHR Permit #:
Gas Storage Permit #:
Spud Date: Date Shut-In:

Table with 7 columns: Conductor, Surface, Production, Intermediate, Liner, Tubing. Rows include Size, Setting Depth, Amount of Cement, Top of Cement, Bottom of Cement.

Casing Fluid Level from Surface: How Determined? Date:
Casing Squeeze(s): to w / sacks of cement, to w / sacks of cement. Date:
Do you have a valid Oil & Gas Lease? Yes No
Depth and Type: Junk in Hole at Tools in Hole at Casing Leaks: Yes No Depth of casing leak(s):
Type Completion: ALT. I ALT. II Depth of: DV Tool: w / sacks of cement Port Collar: w / sack of cement
Packer Type: Size: Inch Set at: Feet
Total Depth: Plug Back Depth: Plug Back Method:

Geological Data:

Table with 4 columns: Formation Name, Formation Top, Formation Base, Completion Information. Rows 1 and 2.

UNDER PENALTY OF PERJURY I HEREBY ATTEST THAT THE INFORMATION CONTAINED HEREIN IS TRUE AND CORRECT TO THE BEST OF MY KNOWLEDGE

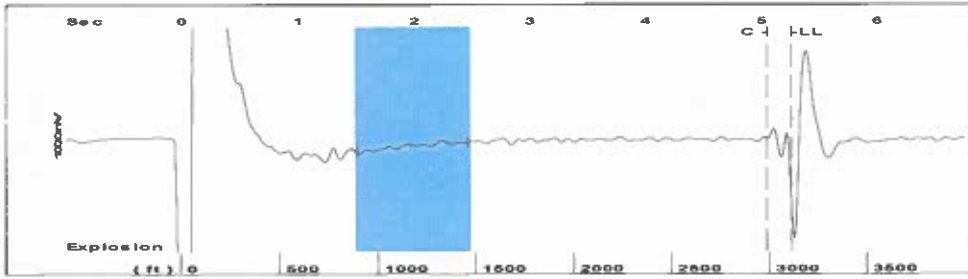
Submitted Electronically

Form with fields: Do NOT Write in This Space - KCC USE ONLY, Date Tested, Results, Date Plugged, Date Repaired, Date Put Back in Service, Review Completed by, Comments, TA Approved: Yes Denied, Date.

Mail to the Appropriate KCC Conservation Office:

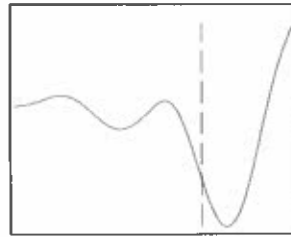
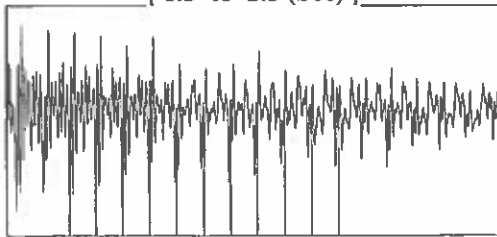
Table with 2 columns: Office Address, Phone. Rows for KCC District Office #1, #2, #3, #4.

Group: TA'D WELLS Well: HAYWARD I-16 (acquired on: 12/07/23 12:41:22)



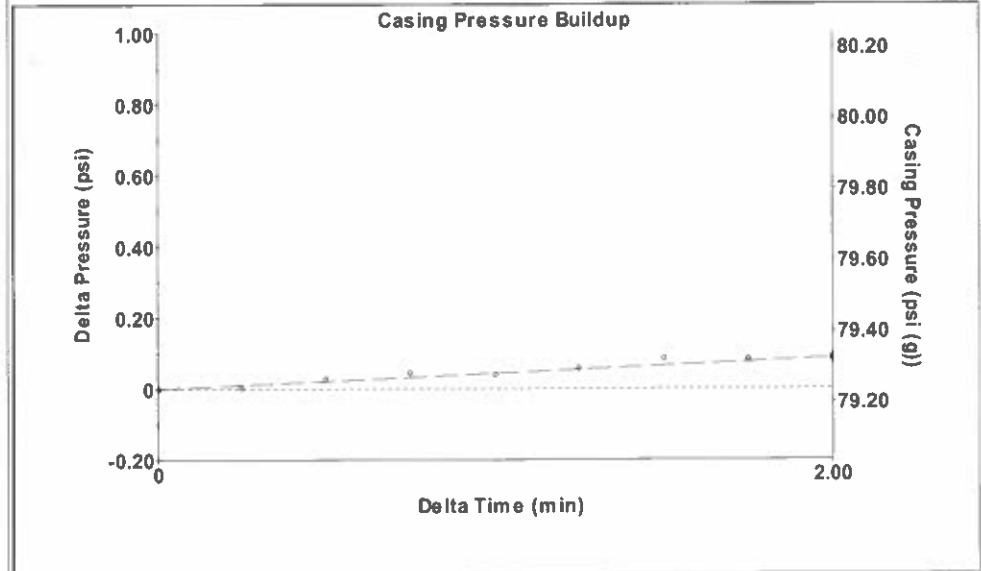
Filter Type High Pass Automatic Collar Count Yes Time 5.258 sec
 Manual Acoustic Velo 1156.93 ft/s Manual JTS/sec 18.2482 Joints 98.1464 Jts
 Depth 3111.24 ft

[1.5 to 2.5 (Sec)]



Analysis Method: Automatic

Group: TA'D WELLS Well: HAYWARD I-16 (acquired on: 12/07/23 12:41:22)



Change in Pressure 0.09 psi PT10411
 Change in Time 2.00 min Range 0 - ? psi

Group: TA'D WELLS Well: HAYWARD I-16 (acquired on: 12/07/23 12:41:22)

Production
 Current Potential
 Oil - * - * - BBL/D
 Water - * - * - BBL/D
 Gas - * - * - Mscf/D

IPR Method Vogel
 PBHP/SBHP - * -
 Production Efficiency 0.0

Oil 40 deg.API
 Water 1.05 Sp.Gr.H2O
 Gas 0.80 Sp.Gr.AIR

Acoustic Velocity 1183.43 ft/s

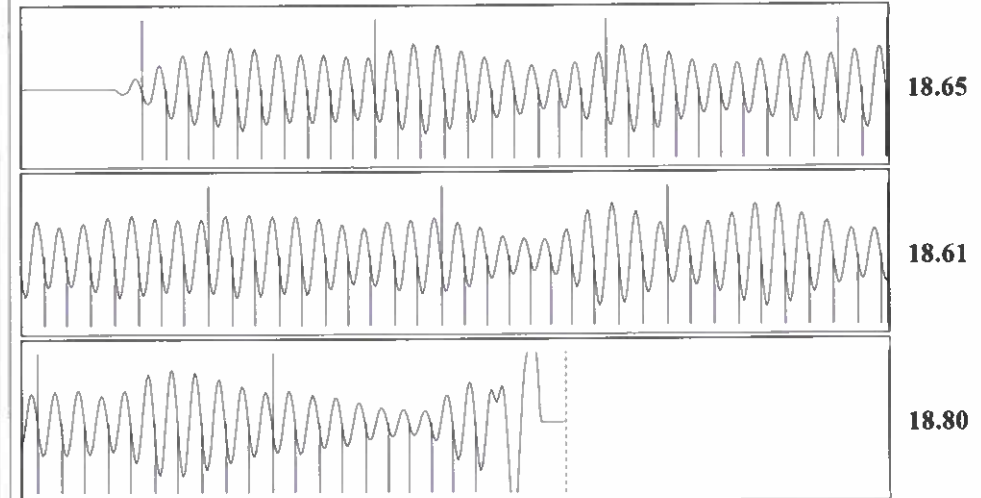
Casing Pressure 79.2 psi (g)
 Casing Pressure Buildup 0.086 psi
 2.00 min
 Gas/Liquid Interface Pressure 87.5 psi (g)
 Liquid Level Depth 3111.24 ft
 Pump Intake Depth 3280.00 ft
 Formation Depth 3280.00 ft



Producing
 Annular Gas Flow
 % Liquid 95 %

Pump Intake 141.8 psi (g)
 Producing BHP 141.8 psi (g)
 Static BHP - * - psi (g)

Group: TA'D WELLS Well: HAYWARD I-16 (acquired on: 12/07/23 12:41:22)



Acoustic Velocity 1183.43 ft/s Joints counted 89
 Joints Per Second 18.6661 jts/sec Joints to liquid level 98.1464
 Depth to liquid level 3111.24 ft Filter Width 16.2482 20.2482
 Automatic Collar Count Yes Time to 1st Collar 0.28 5.048

Conservation Division
District Office No. 1
210 E. Frontview, Suite A
Dodge City, KS 67801



Phone: 620-682-7933
<http://kcc.ks.gov/>

Andrew J. French, Chairperson
Dwight D. Keen, Commissioner
Annie Kuether, Commissioner

Laura Kelly, Governor

12/11/2023

Katherine McClurkan
Merit Energy Company, LLC
13727 Noel Road, Suite 1200
Dallas, TX 75240-7362

Re: Temporary Abandonment
API 15-129-10047-00-00
Hayward 1-16
NW/4 Sec.16-32S-42W
Morton County, Kansas

Dear Katherine McClurkan:

"Your temporary abandonment (TA) application for the well listed above has been approved. In accordance with K.A.R. 82-3-111 the TA status of this well will expire 12/11/2024.

- * If you return this well to service or plug it, please notify the District Office.
- * If you sell this well you are required to file a Transfer of Operator form, T-1.
- * If the well will remain temporarily abandoned, you must submit a new TA application, CP-111, before 12/11/2024.

You may contact me at the number above if you have questions.

Very truly yours,

Michael Maier"