

KANSAS CORPORATION COMMISSION
OIL & GAS CONSERVATION DIVISION

TEMPORARY ABANDONMENT WELL APPLICATION

OPERATOR: License#
Name:
Address 1:
Address 2:
City: State: Zip:
Contact Person:
Phone:
Contact Person Email:
Field Contact Person:
Field Contact Person Phone:

API No. 15-
Spot Description:
Sec. Twp. S. R.
feet from N / S Line of Section
feet from E / W Line of Section
GPS Location: Lat: , Long:
Datum: NAD27 NAD83 WGS84
County: Elevation: GL KB
Lease Name: Well #:
Well Type: (check one) Oil Gas OG WSW Other:
SWD Permit #: ENHR Permit #:
Gas Storage Permit #:
Spud Date: Date Shut-In:

Table with 7 columns: Conductor, Surface, Production, Intermediate, Liner, Tubing. Rows include Size, Setting Depth, Amount of Cement, Top of Cement, Bottom of Cement.

Casing Fluid Level from Surface: How Determined? Date:

Casing Squeeze(s): (top) to (bottom) w / sacks of cement, (top) to (bottom) w / sacks of cement. Date:

Do you have a valid Oil & Gas Lease? Yes No

Depth and Type: Junk in Hole at (depth) Tools in Hole at (depth) Casing Leaks: Yes No Depth of casing leak(s):

Type Completion: ALT. I ALT. II Depth of: DV Tool: (depth) w / sacks of cement Port Collar: (depth) w / sack of cement

Packer Type: Size: Inch Set at: Feet

Total Depth: Plug Back Depth: Plug Back Method:

Geological Date:

Table with 4 columns: Formation Name, Formation Top, Formation Base, Completion Information. Rows 1 and 2.

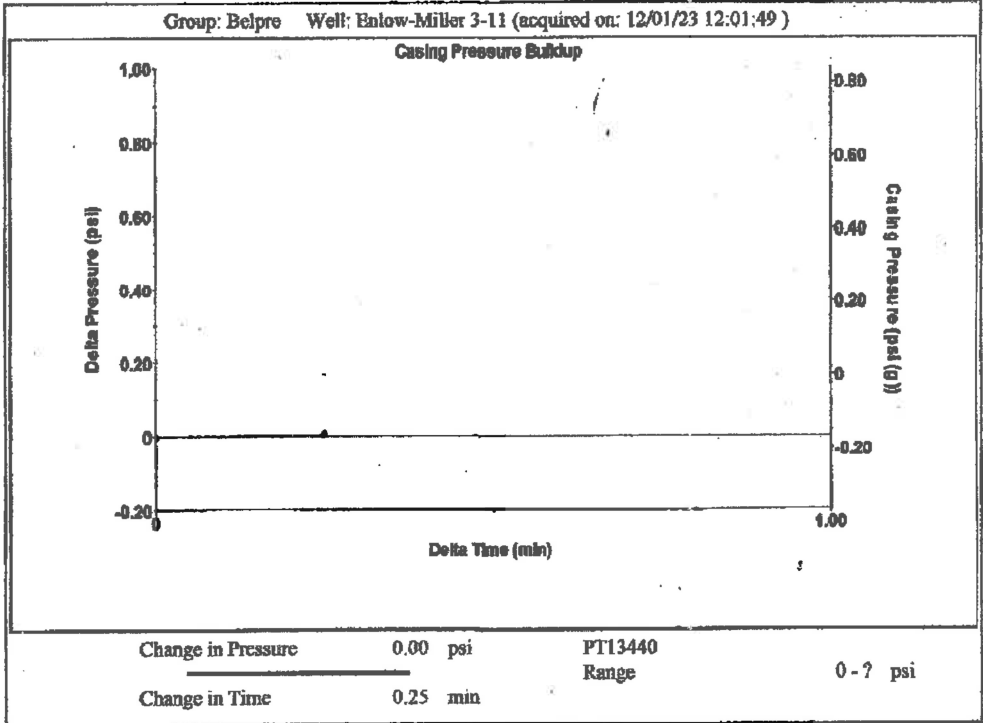
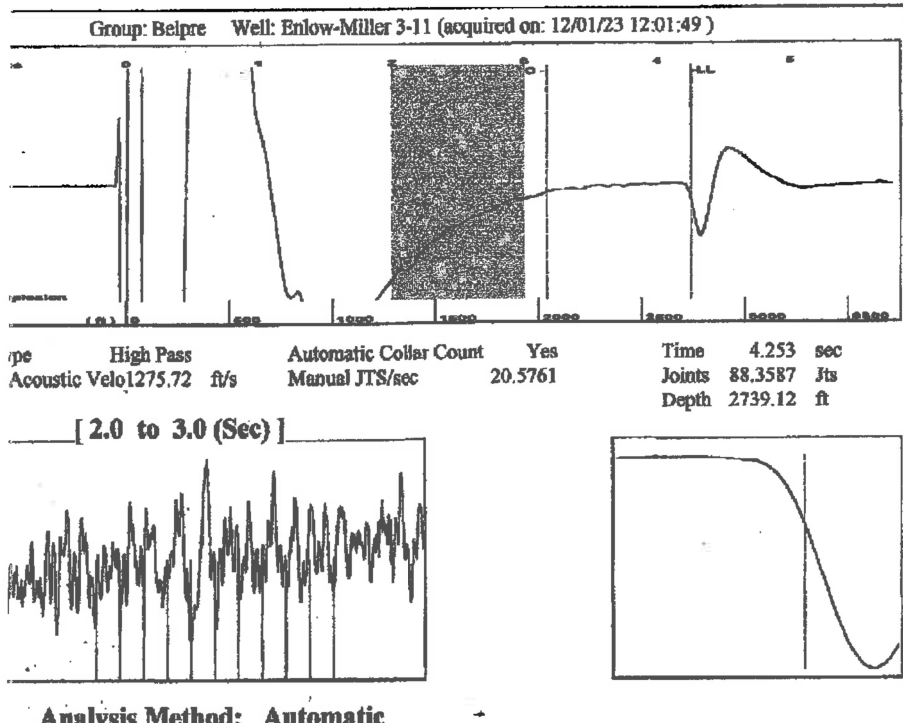
UNDER PENALTY OF PERJURY I HEREBY ATTEST THAT THE INFORMATION CONTAINED HEREIN IS TRUE AND CORRECT TO THE BEST OF MY KNOWLEDGE

Submitted Electronically

Do NOT Write in This Space - KCC USE ONLY
Date Tested: Results: Date Plugged: Date Repaired: Date Put Back in Service:
Review Completed by: Comments:
TA Approved: Yes Denied Date:

Mail to the Appropriate KCC Conservation Office:

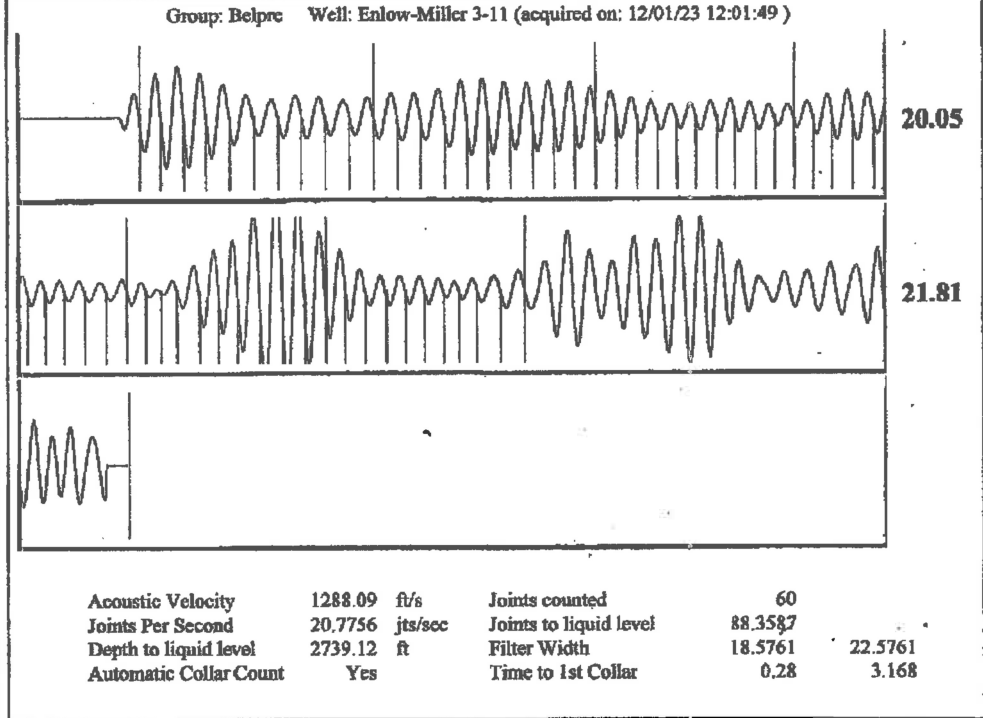
Table with 3 columns: District Office #, Address, Phone. Rows 1-4.



Group: Belpre Well: Enlow-Miller 3-11 (acquired on: 12/01/23 12:01:49)

Potential - * - BBL/D - * - BBL/D - * - Mscf/D method /SBHP ation Efficiency 0.0 40 deg.API r:05 Sp.Gr.H2O 0.71 Sp.Gr.AIR atic Velocity 1288.09 ft/s	Casing Pressure -0.2 psi (g) Casing Pressure Buildup 0.0 psi 0.25 min Gas/Liquid Interface Pressure 0.8 psi (g) Liquid Level Depth 2739.12 ft Pump Intake Depth 4377.00 ft Formation Depth 4341.00 ft	Producing Annular Gas Flow 0 Mscf/D % Liquid 100 % Pump Intake 548.7 psi (g) Producing BHP 537.0 psi (g) Static BHP - * - psi (g)
--	---	--

ation Submergence Gaseous Liquid Column HT (TVD) 1638 ft alent Gas Free Liquid HT (TVD) 1638 ft	Pump Intake 548.7 psi (g) Producing BHP 537.0 psi (g) Static BHP - * - psi (g)
---	--



Conservation Division
District Office No. 1
210 E. Frontview, Suite A
Dodge City, KS 67801



Phone: 620-682-7933
<http://kcc.ks.gov/>

Andrew J. French, Chairperson
Dwight D. Keen, Commissioner
Annie Kuether, Commissioner

Laura Kelly, Governor

12/14/2023

Loveness Mpanje
F. G. Holl Company L.L.C.
9431 E CENTRAL STE 100
WICHITA, KS 67206-2563

Re: Temporary Abandonment
API 15-047-21057-00-00
ENLOW-MILLER 3-11
SE/4 Sec.11-24S-17W
Edwards County, Kansas

Dear Loveness Mpanje:

"Your temporary abandonment (TA) application for the well listed above has been approved. In accordance with K.A.R. 82-3-111 the TA status of this well will expire 12/14/2024.

- * If you return this well to service or plug it, please notify the District Office.
- * If you sell this well you are required to file a Transfer of Operator form, T-1.
- * If the well will remain temporarily abandoned, you must submit a new TA application, CP-111, before 12/14/2024.

You may contact me at the number above if you have questions.

Very truly yours,

Michael Maier"