

KANSAS CORPORATION COMMISSION
OIL & GAS CONSERVATION DIVISION

TEMPORARY ABANDONMENT WELL APPLICATION

OPERATOR: License#
Name:
Address 1:
Address 2:
City: State: Zip:
Contact Person:
Phone:
Contact Person Email:
Field Contact Person:
Field Contact Person Phone:

API No. 15-
Spot Description:
Sec. Twp. S. R.
GPS Location: Lat: Long:
Datum: NAD27 NAD83 WGS84
County: Elevation:
Lease Name: Well #:
Well Type: Oil Gas OG WSW Other:
SWD Permit #: ENHR Permit #:
Gas Storage Permit #:
Spud Date: Date Shut-In:

Table with 7 columns: Conductor, Surface, Production, Intermediate, Liner, Tubing. Rows include Size, Setting Depth, Amount of Cement, Top of Cement, Bottom of Cement.

Casing Fluid Level from Surface: How Determined? Date:
Casing Squeeze(s): to w / sacks of cement, to w / sacks of cement. Date:
Do you have a valid Oil & Gas Lease? Yes No
Depth and Type: Junk in Hole at Tools in Hole at Casing Leaks: Yes No Depth of casing leak(s):
Type Completion: ALT. I ALT. II Depth of: DV Tool: w / sacks of cement Port Collar: w / sack of cement
Packer Type: Size: Inch Set at: Feet
Total Depth: Plug Back Depth: Plug Back Method:

Geological Data:

Table with 4 columns: Formation Name, Formation Top, Formation Base, Completion Information. Rows 1 and 2.

UNDER PENALTY OF PERJURY I HEREBY ATTEST THAT THE INFORMATION CONTAINED HEREIN IS TRUE AND CORRECT TO THE BEST OF MY KNOWLEDGE

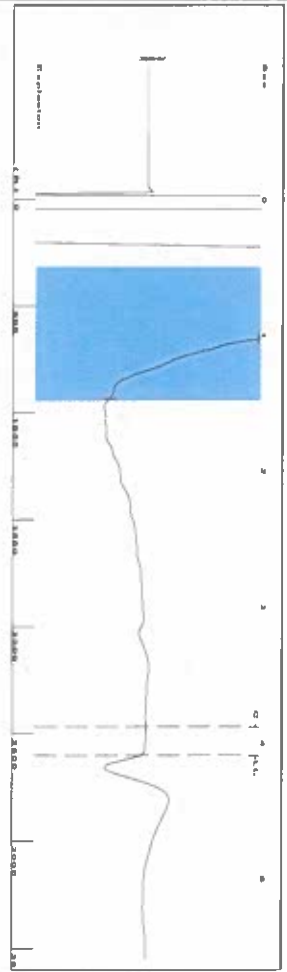
Submitted Electronically

Do NOT Write in This Space - KCC USE ONLY
Date Tested: Results: Date Plugged: Date Repaired: Date Put Back in Service:
Review Completed by: Comments:
TA Approved: Yes Denied Date:

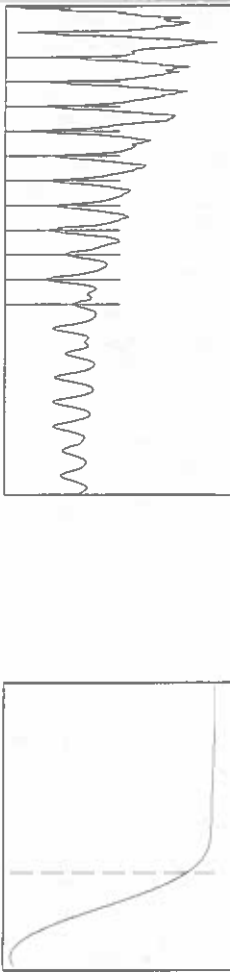
Mail to the Appropriate KCC Conservation Office:

Table with 3 columns: District Office #, Address, Phone. Rows 1-4.

Group: SUBLETTE Well: Tunis A-2 (acquired on: 11/02/23 15:25:04)



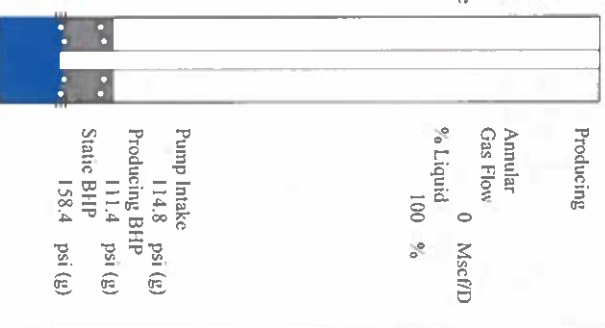
Filter Type High Pass Automatic Collar Count Yes
 Manual Acoustic Velo 1255.45 N/S Manual JTS/sec 19.802
 Time 4.097 sec
 Joints 82.0338 Jts
 Depth 2600.47 ft



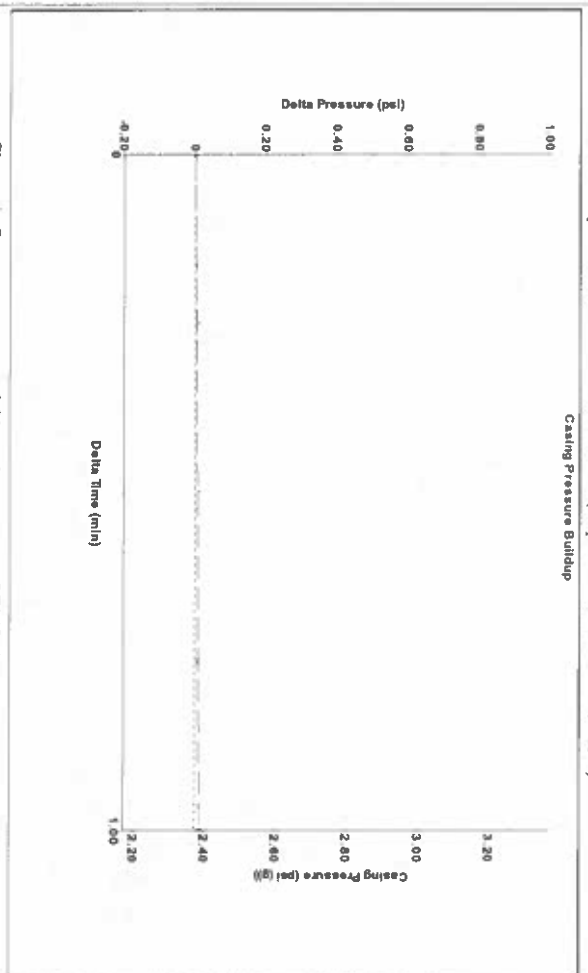
Analysis Method: Automatic

Group: SUBLETTE Well: Tunis A-2 (acquired on: 11/02/23 15:25:04)

Production	Potential	Casing Pressure	Producing
Current	0.0	2.4 psi (g)	Annular
Oil	0.0	Casing Pressure Buildup	Gas Flow
Water	0.0	0.0 psi	% Liquid
Gas	0.0	1.00 min	100 %
IPR Method	Vogel	Gas/Liquid Interface Pressure	
PBHP/SBHP	0.73	3.5 psi (g)	
Production Efficiency	43.0	Liquid Level Depth	
Oil	40 deg-API	2600.47 ft	
Water	1.05 Sp.Gr-H2O	Pump Intake Depth	
Gas	0.73 Sp.Gr-AIR	2929.00 ft	
Acoustic Velocity	1269.45 ft/s	Formation Depth	
		2919.00 ft	

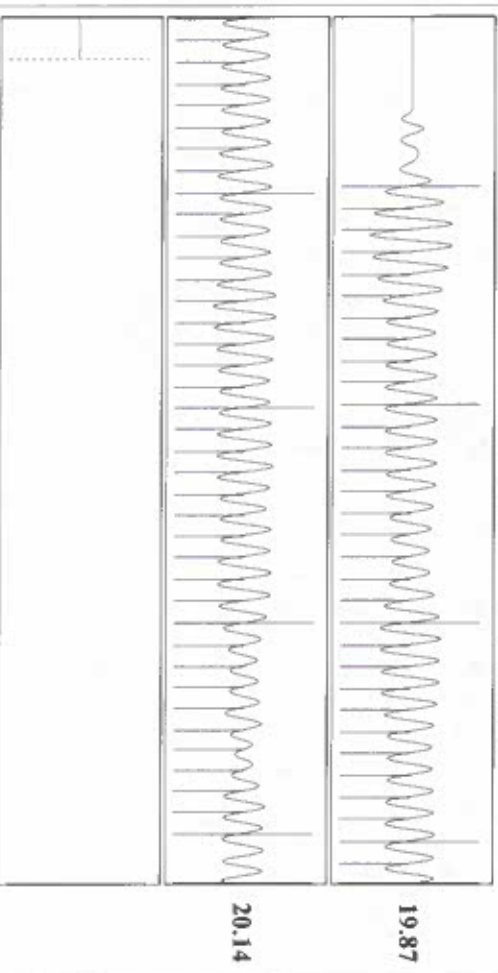


Group: SUBLETTE Well: Tunis A-2 (acquired on: 11/02/23 15:25:04)



Change in Pressure 0.01 psi PT16716
 Change in Time 1.00 min Range 0 - 2 psi

Group: SUBLETTE Well: Tunis A-2 (acquired on: 11/02/23 15:25:04)



Acoustic Velocity 1269.45 ft/s Joints counted 70
 Joints Per Second 20.0229 Jts/sec Joints to liquid level 82.0338
 Depth to liquid level 2600.47 ft Filter Width 17.802
 Automatic Collar Count Yes Time to 1st Collar 0.392 21.802 3.888

Conservation Division
District Office No. 1
210 E. Frontview, Suite A
Dodge City, KS 67801



Phone: 620-682-7933
<http://kcc.ks.gov/>

Andrew J. French, Chairperson
Dwight D. Keen, Commissioner
Annie Kuether, Commissioner

Laura Kelly, Governor

12/18/2023

Katherine McClurkan
Merit Energy Company, LLC
13727 NOEL ROAD, SUITE 1200
DALLAS, TX 75240-7362

Re: Temporary Abandonment
API 15-081-20109-00-00
TUNIS A 2
SW/4 Sec.17-27S-34W
Haskell County, Kansas

Dear Katherine McClurkan:

"Your temporary abandonment (TA) application for the well listed above has been approved. In accordance with K.A.R. 82-3-111 the TA status of this well will expire 12/18/2024.

- * If you return this well to service or plug it, please notify the District Office.
- * If you sell this well you are required to file a Transfer of Operator form, T-1.
- * If the well will remain temporarily abandoned, you must submit a new TA application, CP-111, before 12/18/2024.

You may contact me at the number above if you have questions.

Very truly yours,

Michael Maier"