

KANSAS CORPORATION COMMISSION
OIL & GAS CONSERVATION DIVISION

TEMPORARY ABANDONMENT WELL APPLICATION

OPERATOR: License#
Name:
Address 1:
Address 2:
City: State: Zip:
Contact Person:
Phone:
Contact Person Email:
Field Contact Person:
Field Contact Person Phone:

API No. 15-
Spot Description:
Sec. Twp. S. R.
GPS Location: Lat: Long:
Datum: NAD27 NAD83 WGS84
County: Elevation:
Lease Name: Well #:
Well Type: Oil Gas OG WSW Other:
SWD Permit #: ENHR Permit #:
Gas Storage Permit #:
Spud Date: Date Shut-In:

Table with 7 columns: Conductor, Surface, Production, Intermediate, Liner, Tubing. Rows include Size, Setting Depth, Amount of Cement, Top of Cement, Bottom of Cement.

Casing Fluid Level from Surface: How Determined? Date:
Casing Squeeze(s): to w / sacks of cement, to w / sacks of cement. Date:
Do you have a valid Oil & Gas Lease? Yes No
Depth and Type: Junk in Hole at Tools in Hole at Casing Leaks: Yes No Depth of casing leak(s):
Type Completion: ALT. I ALT. II Depth of: DV Tool: w / sacks of cement Port Collar: w / sack of cement
Packer Type: Size: Inch Set at: Feet
Total Depth: Plug Back Depth: Plug Back Method:

Geological Data:

Table with 4 columns: Formation Name, Formation Top, Formation Base, Completion Information. Rows 1 and 2.

UNDER PENALTY OF PERJURY I HEREBY ATTEST THAT THE INFORMATION CONTAINED HEREIN IS TRUE AND CORRECT TO THE BEST OF MY KNOWLEDGE

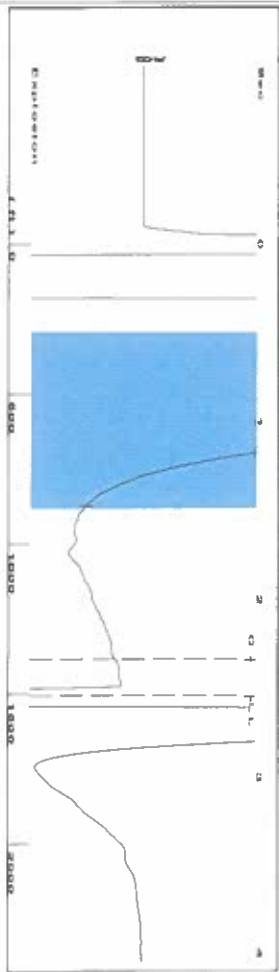
Submitted Electronically

Form with fields: Do NOT Write in This Space - KCC USE ONLY, Date Tested, Results, Date Plugged, Date Repaired, Date Put Back in Service, Review Completed by, Comments, TA Approved: Yes Denied, Date.

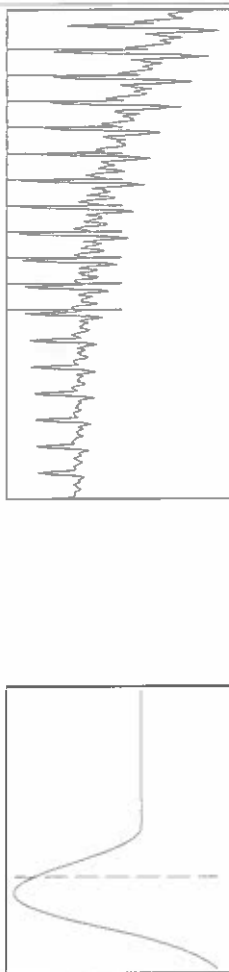
Mail to the Appropriate KCC Conservation Office:

Table with 2 columns: Office Address, Phone. Rows for KCC District Office #1, #2, #3, #4.

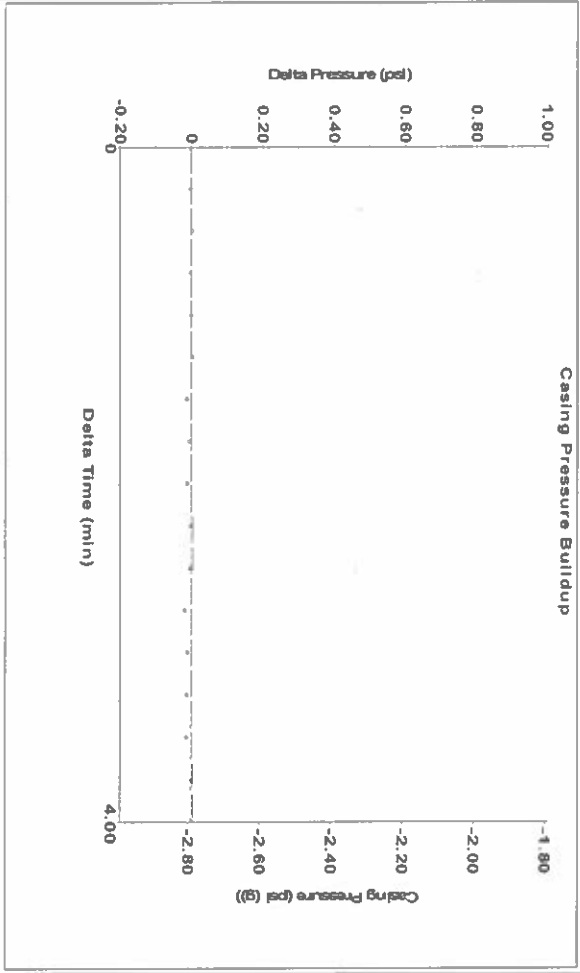
Group: SUBLETTIE Well: Elizabeth Cox A-7 (acquired on: 12/19/23 12:23:50)



Filter Type High Pass
 Manual Acoustic Velo 189.49 ft/s
 Automatic Collar Count Yes
 Manual JTS/sec 18.7617
 Time 2.546 sec
 Joints 47.4637 J/s
 Depth 1504.60 ft



Group: SUBLETTIE Well: Elizabeth Cox A-7 (acquired on: 12/19/23 12:23:50)

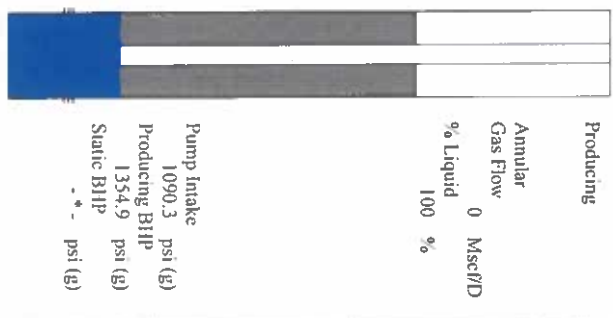


Change in Pressure 0.00 psi
 Change in Time 4.00 min
 PT 14679
 Range 0 - 2 psi

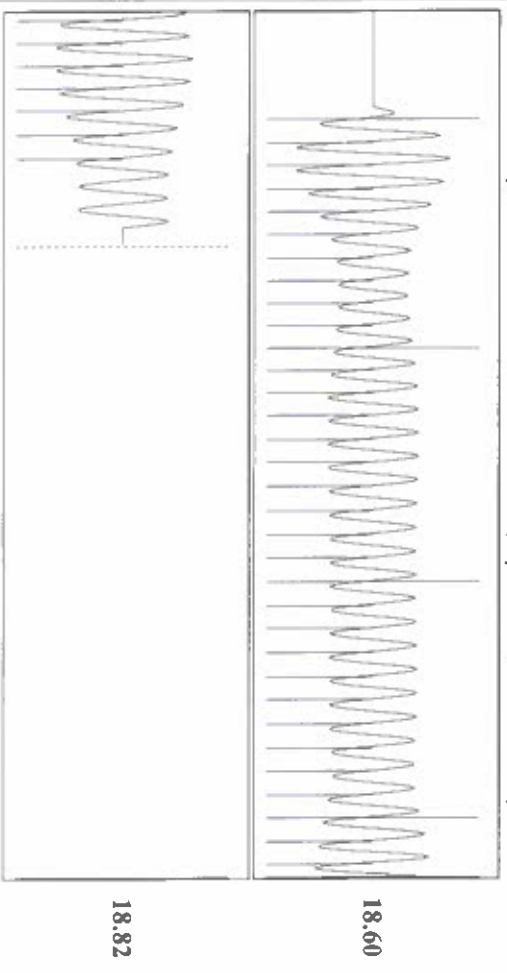
Analysis Method: Automatic

Group: SUBLETTIE Well: Elizabeth Cox A-7 (acquired on: 12/19/23 12:23:50)

Production Current	Potential	Casing Pressure	Producing
Oil - *	BBL/D - *	-2.8 psi (g)	Annular Gas Flow 0 Mscf/D
Water - *	BBL/D - *	Casing Pressure Buildup 0.002 psi	% Liquid 100 %
Gas - *	Mscf/D - *	4.00 min	
IPR Method PBHP/SBHP	Vogel - *	Gas/Liquid Interface Pressure -2.3 psi (g)	
Production Efficiency 0.0		Liquid Level Depth 1504.60 ft	
Oil 40 deg API		Pump Intake Depth 4833.00 ft	
Water 1.05 Sp Gr: H2O		Formation Depth 5415.00 ft	
Gas 0.79 Sp Gr: AIR			
Acoustic Velocity 1181.93 ft/s			
Formation Submergence			
Total Gaseous Liquid Column HT (TTVD) 3328 ft			
Equivalent Gas Free Liquid HT (TTVD) 3328 ft			
12/19/23			



Group: SUBLETTIE Well: Elizabeth Cox A-7 (acquired on: 12/19/23 12:23:50)



Acoustic Velocity 1181.93 ft/s
 Joints Per Second 18.6424 J/s:sec
 Depth to liquid level 1504.6 ft
 Automatic Collar Count Yes
 Joints counted 39
 Joints to liquid level 47.4637
 Filter Width 16.7617
 Time to 1st Collar 0.248
 18.82
 18.60
 2.34

Conservation Division
District Office No. 1
210 E. Frontview, Suite A
Dodge City, KS 67801



Phone: 620-682-7933
<http://kcc.ks.gov/>

Andrew J. French, Chairperson
Dwight D. Keen, Commissioner
Annie Kuether, Commissioner

Laura Kelly, Governor

12/20/2023

Katherine McClurkan
Merit Energy Company, LLC
13727 Noel Roade, Suite 1200
Dallas, TX 75240

Re: Temporary Abandonment
API 15-081-21944-00-00
Elizabeth A. Cox 7
SW/4 Sec.08-30S-33W
Haskell County, Kansas

Dear Katherine McClurkan:

"Your temporary abandonment (TA) application for the well listed above has been approved. In accordance with K.A.R. 82-3-111 the TA status of this well will expire 06/07/2024.

- * If you return this well to service or plug it, please notify the District Office.
- * If you sell this well you are required to file a Transfer of Operator form, T-1.
- * If the well will remain temporarily abandoned, you must submit a new TA application, CP-111, before 06/07/2024.

You may contact me at the number above if you have questions.

Very truly yours,

Michael Maier"