

KANSAS CORPORATION COMMISSION
OIL & GAS CONSERVATION DIVISION

TEMPORARY ABANDONMENT WELL APPLICATION

OPERATOR: License#
Name:
Address 1:
Address 2:
City: State: Zip:
Contact Person:
Phone:
Contact Person Email:
Field Contact Person:
Field Contact Person Phone:

API No. 15-
Spot Description:
Sec. Twp. S. R.
GPS Location: Lat: Long:
Datum: NAD27 NAD83 WGS84
County: Elevation:
Lease Name: Well #:
Well Type: Oil Gas OG WSW Other:
SWD Permit #: ENHR Permit #:
Gas Storage Permit #:
Spud Date: Date Shut-In:

Table with 7 columns: Conductor, Surface, Production, Intermediate, Liner, Tubing. Rows include Size, Setting Depth, Amount of Cement, Top of Cement, Bottom of Cement.

Casing Fluid Level from Surface: How Determined? Date:
Casing Squeeze(s): to w / sacks of cement, to w / sacks of cement. Date:
Do you have a valid Oil & Gas Lease? Yes No
Depth and Type: Junk in Hole at Tools in Hole at Casing Leaks: Yes No Depth of casing leak(s):
Type Completion: ALT. I ALT. II Depth of: DV Tool: w / sacks of cement Port Collar: w / sack of cement
Packer Type: Size: Inch Set at: Feet
Total Depth: Plug Back Depth: Plug Back Method:

Geological Data:

Table with 4 columns: Formation Name, Formation Top, Formation Base, Completion Information. Rows 1 and 2.

UNDER PENALTY OF PERJURY I HEREBY ATTEST THAT THE INFORMATION CONTAINED HEREIN IS TRUE AND CORRECT TO THE BEST OF MY KNOWLEDGE

Submitted Electronically

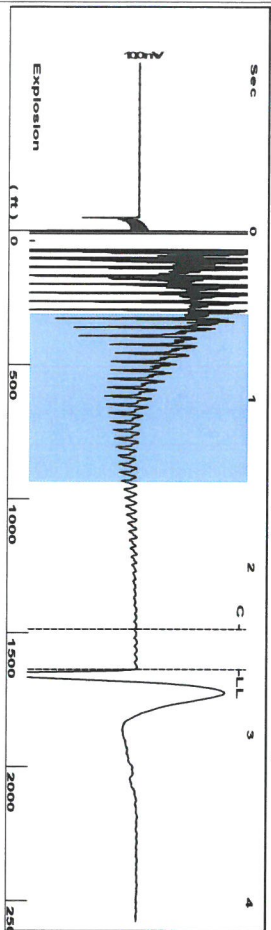
Do NOT Write in This Space - KCC USE ONLY
Date Tested: Results: Date Plugged: Date Repaired: Date Put Back in Service:
Review Completed by: Comments:
TA Approved: Yes Denied Date:

Mail to the Appropriate KCC Conservation Office:

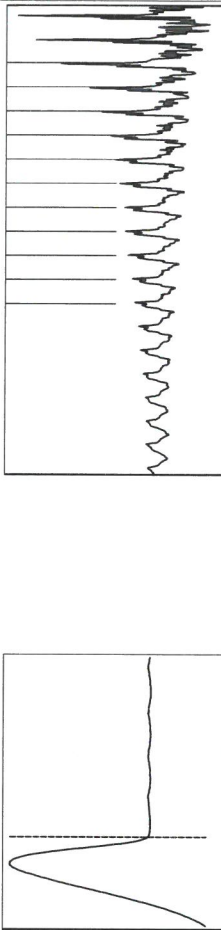
Table with 3 columns: District Office #, Address, Phone. Rows 1-4.



Group: MyWells Well: Charlie Brown 1-25 (acquired on: 12/18/23 10:38:38 )



Filter Type High Pass Automatic Collar Count Yes  
 Manual Acoustic Velocity 231.07 f/s Manual JTS/sec 19.4175  
 Time 2.613 sec  
 Joints 51.6055 f/s  
 Depth 1635.89 ft



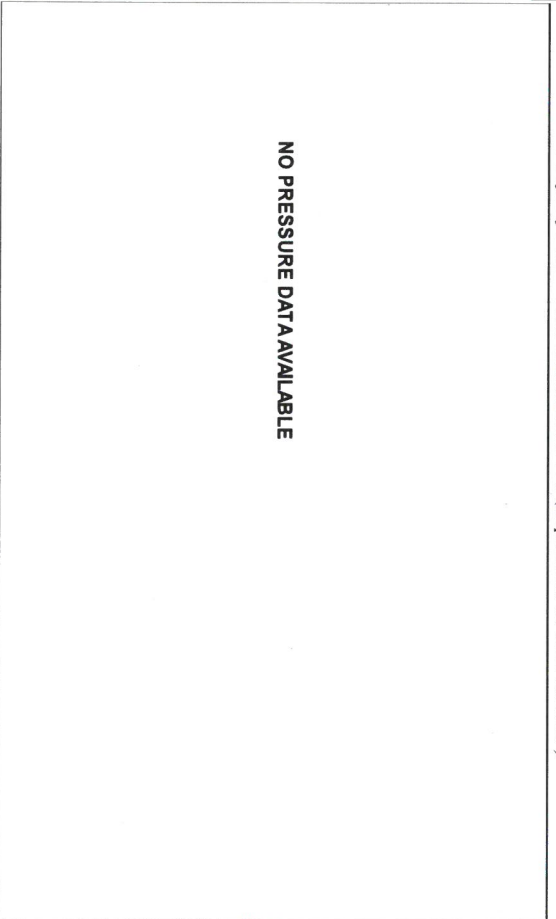
Analysis Method: Automatic

Group: MyWells Well: Charlie Brown 1-25 (acquired on: 12/18/23 10:38:38 )

Production	Potential	Casing Pressure	Static
Oil -*- Water -*- Gas 0.0	BBL/D BBL/D Mscf/D	1.1 psi (g) -0.0 psi 0.25 min	Oil Column Height MD 0 ft
IPR Method PBHP/SBHP Production Efficiency	Vogel - *- 0.0	Gas/Liquid Interface Pressure 1.7 psi (g)	Water Column Height MD 3414 ft
Oil 40 deg API Water 1.05 Sp.Gr:H2O Gas 0.73 Sp.Gr:AIR	Liquid Level Depth 1635.89 ft	Pump Intake Depth - *- ft	Static BHP 1554.0 psi (g)
Acoustic Velocity	1252.12 ft/s	Formation Depth 5062.00 ft	

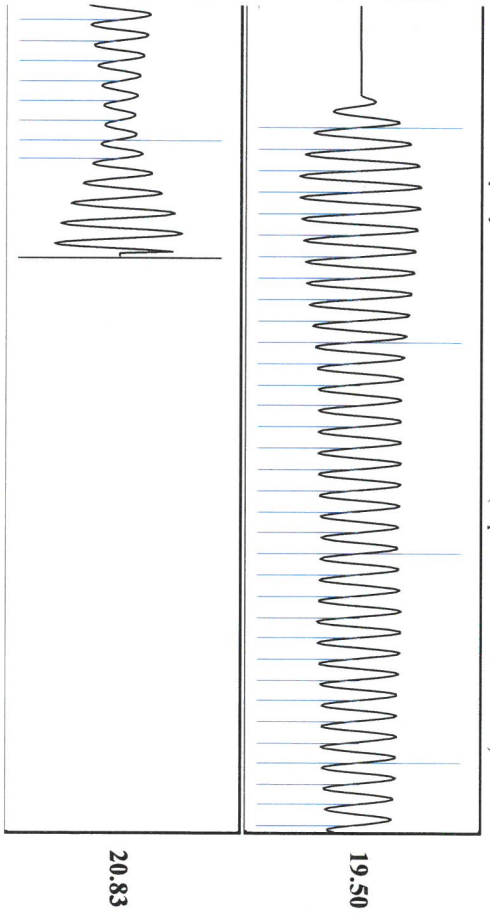


Group: MyWells Well: Charlie Brown 1-25 (acquired on: 12/18/23 10:38:38 )



Change in Pressure 0.00 psi PT 8064  
 Change in Time 0.00 min Range 0 - ? psi

Group: MyWells Well: Charlie Brown 1-25 (acquired on: 12/18/23 10:38:38 )



Acoustic Velocity	1252.12 ft/s	Joints counted	41
Joints Per Second	19.7495 fts/sec	Joints to liquid level	51.6055
Depth to liquid level	1635.89 ft	Filter Width	17.4175
Automatic Collar Count	Yes	Time to 1st Collar	0.296
			21.4175
			2.372

Conservation Division  
District Office No. 1  
210 E. Frontview, Suite A  
Dodge City, KS 67801



Phone: 620-682-7933  
<http://kcc.ks.gov/>

Andrew J. French, Chairperson  
Dwight D. Keen, Commissioner  
Annie Kuether, Commissioner

Laura Kelly, Governor

01/04/2024

Michael Reilly  
Grand Mesa Operating Company  
1700 N WATERFRONT PKWY BLDG 600  
WICHITA, KS 67206-5514

Re: Temporary Abandonment  
API 15-033-21720-00-00  
CHARLIE BROWN 1-25  
NE/4 Sec.25-33S-16W  
Comanche County, Kansas

Dear Michael Reilly:

"Your temporary abandonment (TA) application for the well listed above has been approved. In accordance with K.A.R. 82-3-111 the TA status of this well will expire 01/04/2025.

- \* If you return this well to service or plug it, please notify the District Office.
- \* If you sell this well you are required to file a Transfer of Operator form, T-1.
- \* If the well will remain temporarily abandoned, you must submit a new TA application, CP-111, before 01/04/2025.

You may contact me at the number above if you have questions.

Very truly yours,

Michael Maier"