

KANSAS CORPORATION COMMISSION
OIL & GAS CONSERVATION DIVISION

TEMPORARY ABANDONMENT WELL APPLICATION

OPERATOR: License#
Name:
Address 1:
Address 2:
City: State: Zip:
Contact Person:
Phone:
Contact Person Email:
Field Contact Person:
Field Contact Person Phone:

API No. 15-
Spot Description:
Sec. Twp. S. R.
GPS Location: Lat: Long:
Datum: NAD27 NAD83 WGS84
County: Elevation:
Lease Name: Well #:
Well Type: Oil Gas OG WSW Other:
SWD Permit #: ENHR Permit #:
Gas Storage Permit #:
Spud Date: Date Shut-In:

Table with 7 columns: Conductor, Surface, Production, Intermediate, Liner, Tubing. Rows include Size, Setting Depth, Amount of Cement, Top of Cement, Bottom of Cement.

Casing Fluid Level from Surface: How Determined? Date:
Casing Squeeze(s): to w / sacks of cement, to w / sacks of cement. Date:
Do you have a valid Oil & Gas Lease? Yes No
Depth and Type: Junk in Hole at Tools in Hole at Casing Leaks: Yes No Depth of casing leak(s):
Type Completion: ALT. I ALT. II Depth of: DV Tool: w / sacks of cement Port Collar: w / sack of cement
Packer Type: Size: Inch Set at: Feet
Total Depth: Plug Back Depth: Plug Back Method:

Geological Data:

Table with 4 columns: Formation Name, Formation Top, Formation Base, Completion Information. Rows 1 and 2.

UNDER PENALTY OF PERJURY I HEREBY ATTEST THAT THE INFORMATION CONTAINED HEREIN IS TRUE AND CORRECT TO THE BEST OF MY KNOWLEDGE

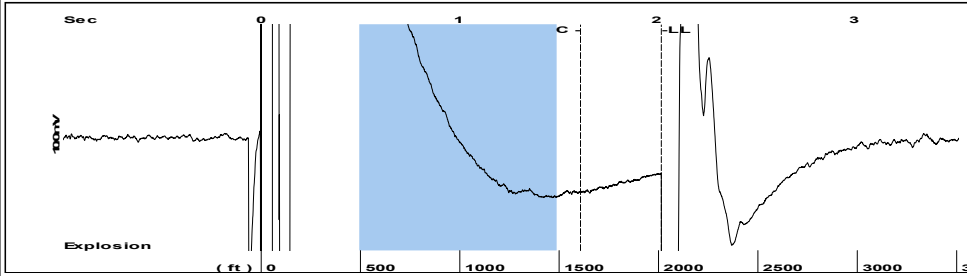
Submitted Electronically

Do NOT Write in This Space - KCC USE ONLY
Date Tested: Results: Date Plugged: Date Repaired: Date Put Back in Service:
Review Completed by: Comments:
TA Approved: Yes Denied Date:

Mail to the Appropriate KCC Conservation Office:

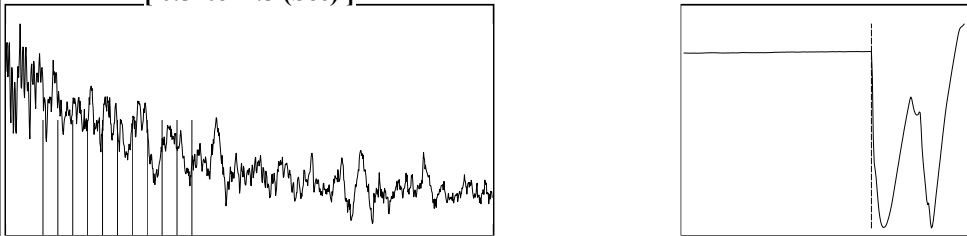
Table with 3 columns: District Office, Address, Phone. Rows for District Office #1, #2, #3, #4.

Group: MyWells Well: Mull #4-28 (acquired on: 01/02/24 10:45:29 )



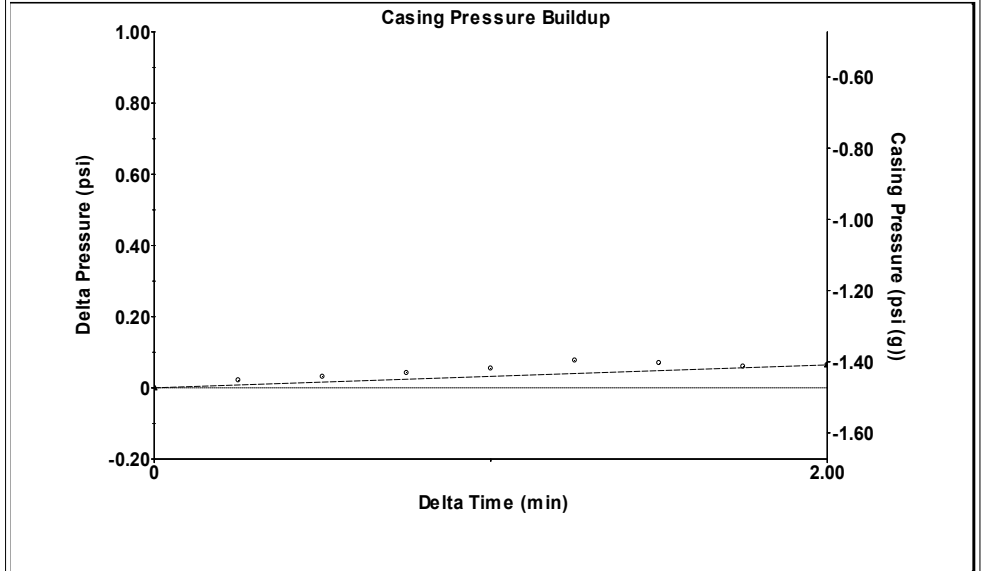
Filter Type High Pass Automatic Collar Count Yes Time 2.025 sec  
 Manual Acoustic Veloc 2027.45 ft/s Manual JTS/sec 32.6797 Joints 64.9038 Jts  
 Depth 2013.32 ft

[ 0.5 to 1.5 (Sec) ]



Analysis Method: Automatic

Group: MyWells Well: Mull #4-28 (acquired on: 01/02/24 10:45:29 )

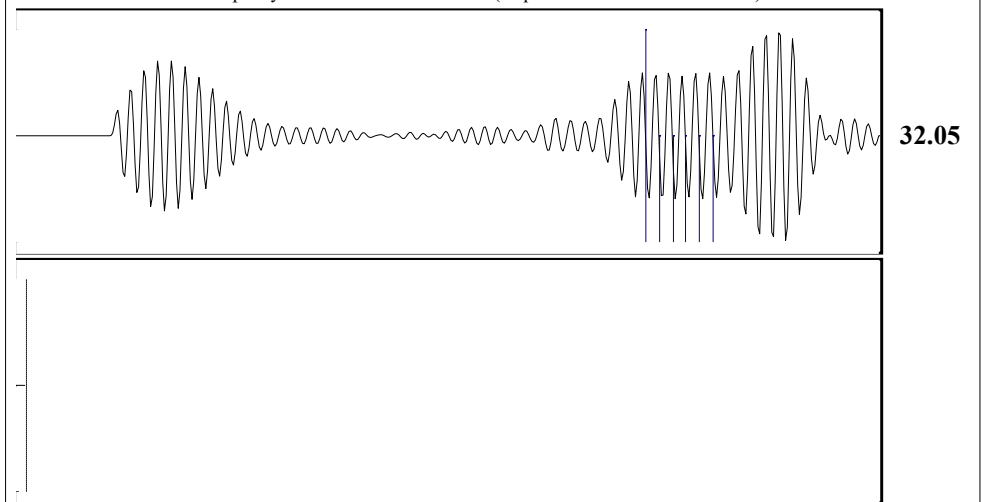


Change in Pressure 0.06 psi PT 17384  
 Change in Time 2.00 min Range 0 - ? psi

Group: MyWells Well: Mull #4-28 (acquired on: 01/02/24 10:45:29 )

<b>Production</b>	<b>Potential</b>	<b>Casing Pressure</b>		<b>Producing</b>
Current		-1.5 psi (g)		Annular Gas Flow
Oil - * -	- * - BBL/D	Casing Pressure Buildup		1 Mscf/D
Water - * -	- * - BBL/D	0.064 psi		% Liquid
Gas - * -	- * - Mscf/D	2.00 min		99 %
IPR Method	Vogel	Gas/Liquid Interface Pressure		
PBHP/SBHP	- * -	-1.0 psi (g)		
Production Efficiency	0.0	Liquid Level Depth		
Oil 40 deg.API		2013.32 ft		
Water 1.05 Sp.Gr.H2O		Pump Intake Depth		
Gas 0.55 Sp.Gr.AIR		4718.00 ft		
Acoustic Velocity	1988.46 ft/s	Formation Depth		
		4718.00 ft		
Formation Submergence		Pump Intake		
Total Gaseous Liquid Column HT (TVD)	2705 ft	886.0 psi (g)		
Equivalent Gas Free Liquid HT (TVD)	2688 ft	Producing BHP		
		886.0 psi (g)		
Acoustic Test		Static BHP		
		- * - psi (g)		

Group: MyWells Well: Mull #4-28 (acquired on: 01/02/24 10:45:29 )



Acoustic Velocity 1988.46 ft/s Joints counted 5  
 Joints Per Second 32.0513 jts/sec Joints to liquid level 64.9038  
 Depth to liquid level 2013.32 ft Filter Width 30.6797 34.6797  
 Automatic Collar Count Yes Time to 1st Collar 1.46 1.616

Conservation Division  
District Office No. 1  
210 E. Frontview, Suite A  
Dodge City, KS 67801



Phone: 620-682-7933  
<http://kcc.ks.gov/>

Andrew J. French, Chairperson  
Dwight D. Keen, Commissioner  
Annie Kuether, Commissioner

Laura Kelly, Governor

01/04/2024

MELODY FLETCHER  
Oil Producers, Inc. of Kansas  
1710 WATERFRONT PKWY  
WICHITA, KS 67206-6603

Re: Temporary Abandonment  
API 15-081-21598-00-00  
MULL 4-28  
NE/4 Sec.28-29S-33W  
Haskell County, Kansas

Dear MELODY FLETCHER:

"Your temporary abandonment (TA) application for the well listed above has been approved. In accordance with K.A.R. 82-3-111 the TA status of this well will expire 01/04/2025.

- \* If you return this well to service or plug it, please notify the District Office.
- \* If you sell this well you are required to file a Transfer of Operator form, T-1.
- \* If the well will remain temporarily abandoned, you must submit a new TA application, CP-111, before 01/04/2025.

You may contact me at the number above if you have questions.

Very truly yours,

Michael Maier"