

KANSAS CORPORATION COMMISSION
OIL & GAS CONSERVATION DIVISION

TEMPORARY ABANDONMENT WELL APPLICATION

OPERATOR: License#
Name:
Address 1:
Address 2:
City: State: Zip:
Contact Person:
Phone:
Contact Person Email:
Field Contact Person:
Field Contact Person Phone:

API No. 15-
Spot Description:
Sec. Twp. S. R.
GPS Location: Lat: Long:
Datum: NAD27 NAD83 WGS84
County: Elevation:
Lease Name: Well #:
Well Type: Oil Gas OG WSW Other:
SWD Permit #: ENHR Permit #:
Gas Storage Permit #:
Spud Date: Date Shut-In:

Table with 7 columns: Conductor, Surface, Production, Intermediate, Liner, Tubing. Rows include Size, Setting Depth, Amount of Cement, Top of Cement, Bottom of Cement.

Casing Fluid Level from Surface: How Determined? Date:
Casing Squeeze(s): to w / sacks of cement, to w / sacks of cement. Date:
Do you have a valid Oil & Gas Lease? Yes No
Depth and Type: Junk in Hole at Tools in Hole at Casing Leaks: Yes No Depth of casing leak(s):
Type Completion: ALT. I ALT. II Depth of: DV Tool: w / sacks of cement Port Collar: w / sack of cement
Packer Type: Size: Inch Set at: Feet
Total Depth: Plug Back Depth: Plug Back Method:

Geological Data:

Table with 4 columns: Formation Name, Formation Top, Formation Base, Completion Information. Rows 1 and 2.

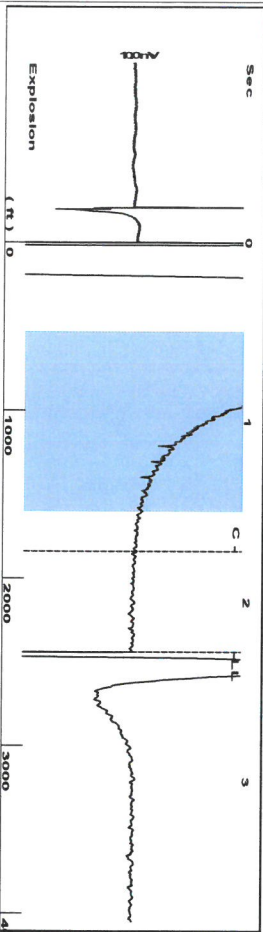
UNDER PENALTY OF PERJURY I HEREBY ATTEST THAT THE INFORMATION CONTAINED HEREIN IS TRUE AND CORRECT TO THE BEST OF MY KNOWLEDGE

Submitted Electronically

Do NOT Write in This Space - KCC USE ONLY
Date Tested: Results: Date Plugged: Date Repaired: Date Put Back in Service:
Review Completed by: Comments:
TA Approved: Yes Denied Date:

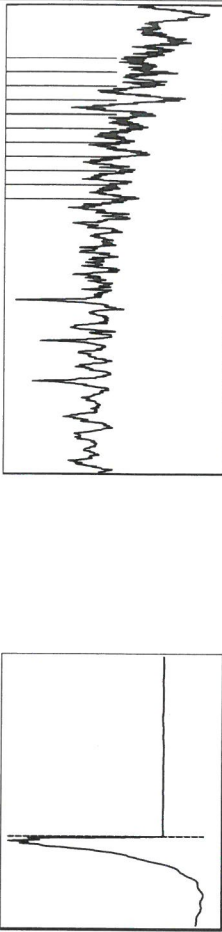
Mail to the Appropriate KCC Conservation Office:

Table with 3 columns: District Office #, Address, Phone. Rows 1-4.



Filter Type High Pass Automatic Collar Count Yes  
 Manual Acoustic Velo: 2099.34 ft/s Manual JTS/sec 33.1126  
 Time 2.277 sec  
 Joints 76.9257 Jts  
 Depth 2438.54 ft

0.5 to 1.5 (Sec)

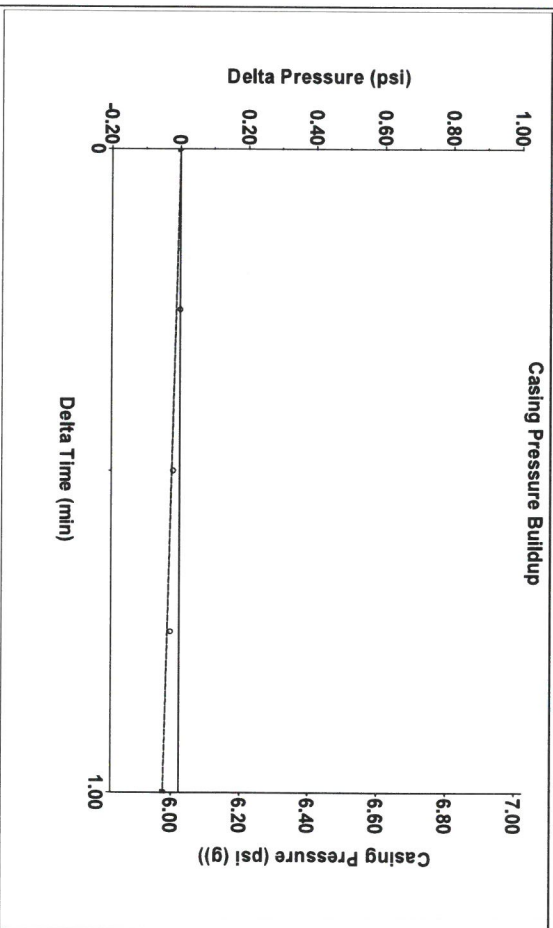


Analysis Method: Automatic

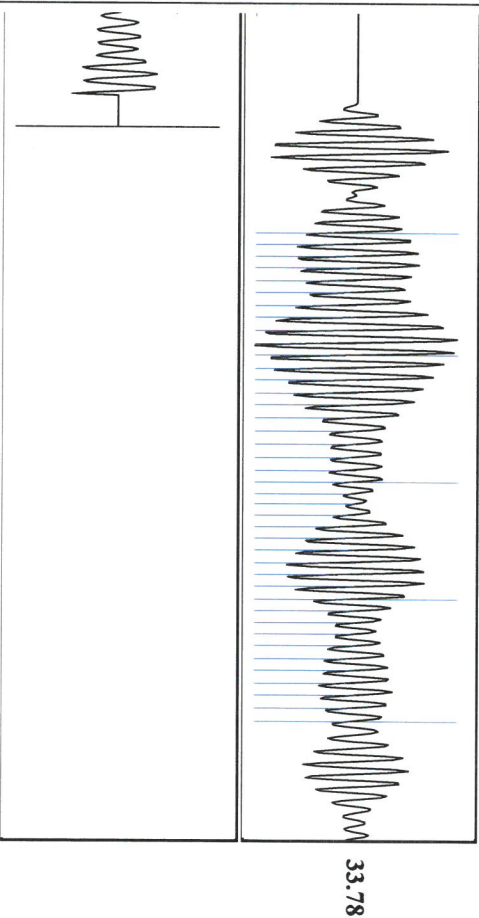
Production	Potential	Casing Pressure	Static
Current	BBL/D	6.0 psi (g)	Static
Oil	BBL/D	Casing Pressure Buildup	Oil Column Height
Water	Mscf/D	-0.0 psi	MD 0 ft
Gas	Mscf/D	1.00 min	Water Column Height
IPR Method	Vogel	Gas/Liquid Interface Pressure	MD 1951 ft
PBHP/SBHP	0.0	7.0 psi (g)	
Production Efficiency			
Oil 40 deg API		Liquid Level Depth	
Water 1.05 Sp.Gr:H2O		2438.54 ft	
Gas 0.55 Sp.Gr:AIR		Pump Intake Depth	
		- - - ft	
Acoustic Velocity 2141.89 ft/s		Formation Depth	
		4390.00 ft	



Static BHP 894.2 psi (g)



Change in Pressure -0.05 psi PT 8064  
 Change in Time 1.00 min Range 0 - ? psi



Acoustic Velocity 2141.89 ft/s Joints counted 40  
 Joints Per Second 33.7838 Jts/sec Joints to liquid level 35.1126  
 Depth to liquid level 2438.54 ft Filter Width 31.1126  
 Automatic Collar Count Yes Time to 1st Collar 1.716

Conservation Division  
District Office No. 1  
210 E. Frontview, Suite A  
Dodge City, KS 67801



Phone: 620-682-7933  
<http://kcc.ks.gov/>

Andrew J. French, Chairperson  
Dwight D. Keen, Commissioner  
Annie Kuether, Commissioner

Laura Kelly, Governor

01/04/2024

Michael J Reilly  
Grand Mesa Operating Company  
1700 N WATERFRONT PKWY BLDG 600  
WICHITA, KS 67206-5514

Re: Temporary Abandonment  
API 15-135-23840-00-02  
HUMPHREY 2-18  
SE/4 Sec.18-17S-24W  
Ness County, Kansas

Dear Michael J Reilly:

"Your temporary abandonment (TA) application for the well listed above has been approved. In accordance with K.A.R. 82-3-111 the TA status of this well will expire 01/04/2025.

- \* If you return this well to service or plug it, please notify the District Office.
- \* If you sell this well you are required to file a Transfer of Operator form, T-1.
- \* If the well will remain temporarily abandoned, you must submit a new TA application, CP-111, before 01/04/2025.

You may contact me at the number above if you have questions.

Very truly yours,

Michael Maier"