

KANSAS CORPORATION COMMISSION
OIL & GAS CONSERVATION DIVISION

Form must be Typed
Form must be signed

TEMPORARY ABANDONMENT WELL APPLICATION

All blanks must be complete

OPERATOR: License#
Name:
Address 1:
Address 2:
City: State: Zip:
Contact Person:
Phone:
Contact Person Email:
Field Contact Person:
Field Contact Person Phone:

API No. 15-
Spot Description:
Sec. Twp. S. R.
feet from N / S Line of Section
feet from E / W Line of Section
GPS Location: Lat: , Long:
Datum: NAD27 NAD83 WGS84
County: Elevation: GL KB
Lease Name: Well #:
Well Type: (check one) Oil Gas OG WSW Other:
SWD Permit #: ENHR Permit #:
Gas Storage Permit #:
Spud Date: Date Shut-In:

Table with 7 columns: Conductor, Surface, Production, Intermediate, Liner, Tubing. Rows include Size, Setting Depth, Amount of Cement, Top of Cement, Bottom of Cement.

Casing Fluid Level from Surface: How Determined? Date:
Casing Squeeze(s): to w / sacks of cement, to w / sacks of cement. Date:
Do you have a valid Oil & Gas Lease? Yes No
Depth and Type: Junk in Hole at Tools in Hole at Casing Leaks: Yes No Depth of casing leak(s):
Type Completion: ALT. I ALT. II Depth of: DV Tool: w / sacks of cement Port Collar: w / sack of cement
Packer Type: Size: Inch Set at: Feet
Total Depth: Plug Back Depth: Plug Back Method:

Geological Data:

Table with 4 columns: Formation Name, Formation Top, Formation Base, Completion Information. Rows 1 and 2.

UNDER PENALTY OF PERJURY I HEREBY ATTEST THAT THE INFORMATION CONTAINED HEREIN IS TRUE AND CORRECT TO THE BEST OF MY KNOWLEDGE

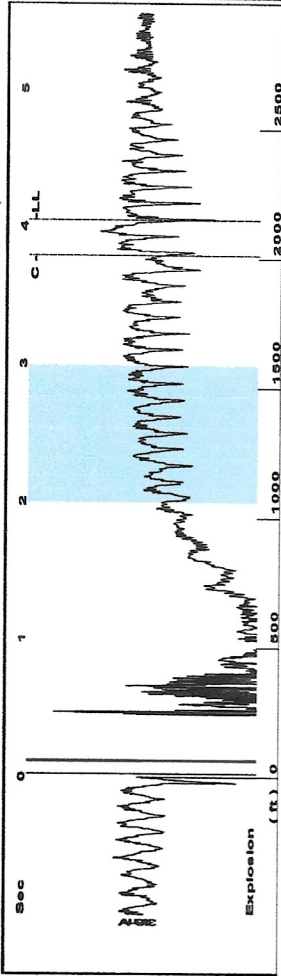
Submitted Electronically

Do NOT Write in This Space - KCC USE ONLY
Date Tested: Results: Date Plugged: Date Repaired: Date Put Back in Service:
Review Completed by: Comments:
TA Approved: Yes Denied Date:

Mail to the Appropriate KCC Conservation Office:

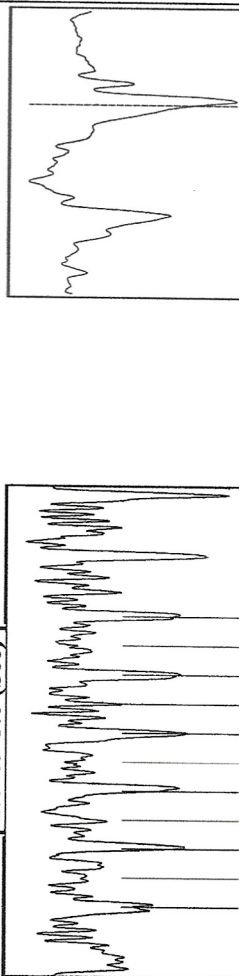
Table with 3 columns: District Office, Address, Phone. Rows for District Office #1, #2, #3, #4.

Group: MyWells Well: Strackeljohn #3 (acquired on: 12/27/23 13:41:35)



Filter Type High Pass Automatic Collar Count Yes Time 4.048 sec
 Manual Acoustic Veloc 1045.53 ft/s Manual JTS/sec 16.8634 Joints 69.3151 Jts
 Depth 2148.77 ft

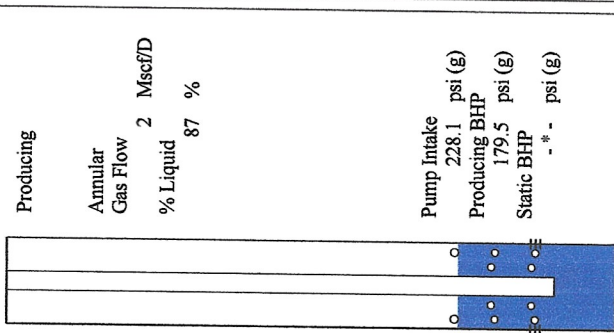
[2.0 to 3.0 (Sec)]



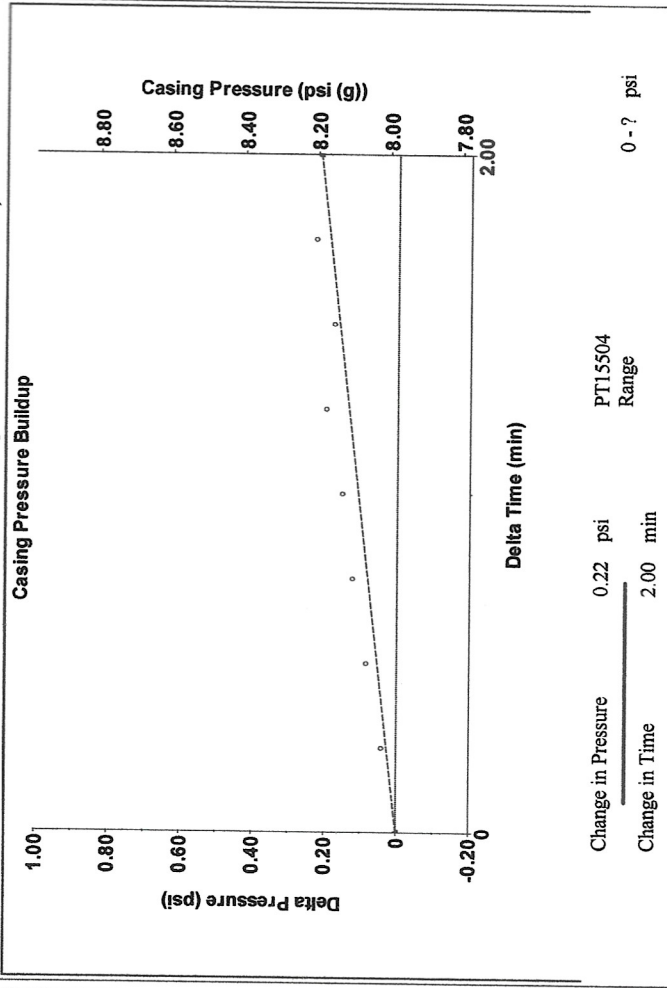
Analysis Method: Automatic

Group: MyWells Well: Strackeljohn #3 (acquired on: 12/27/23 13:41:35)

Production	Potential	Casing Pressure	Producing
Oil 0	- * - BBL/D	8.0 psi (g)	Annular
Water 0	- * - BBL/D	Casing Pressure Buildup	Gas Flow
Gas 0.0	- * - Mscf/D	0.2 psi	% Liquid
IPR Method	Vogel	2.00 min	87 %
PBHP/SBHP	- * -	Gas/Liquid Interface Pressure	
Production Efficiency	0.0	9.5 psi (g)	
Oil 40 deg-API		Liquid Level Depth	
Water 1.05 Sp.Gr.H2O		2148.77 ft	
Gas 0.92 Sp.Gr.AIR		Pump Intake Depth	
Acoustic Velocity	1061.64 ft/s	2687.00 ft	
		Formation Depth	
		2580.00 ft	
Formation Submergence			
Total Gaseous Liquid Column HT (TVD)	538 ft		
Equivalent Gas Free Liquid HT (TVD)	481 ft		
Acoustic Test			

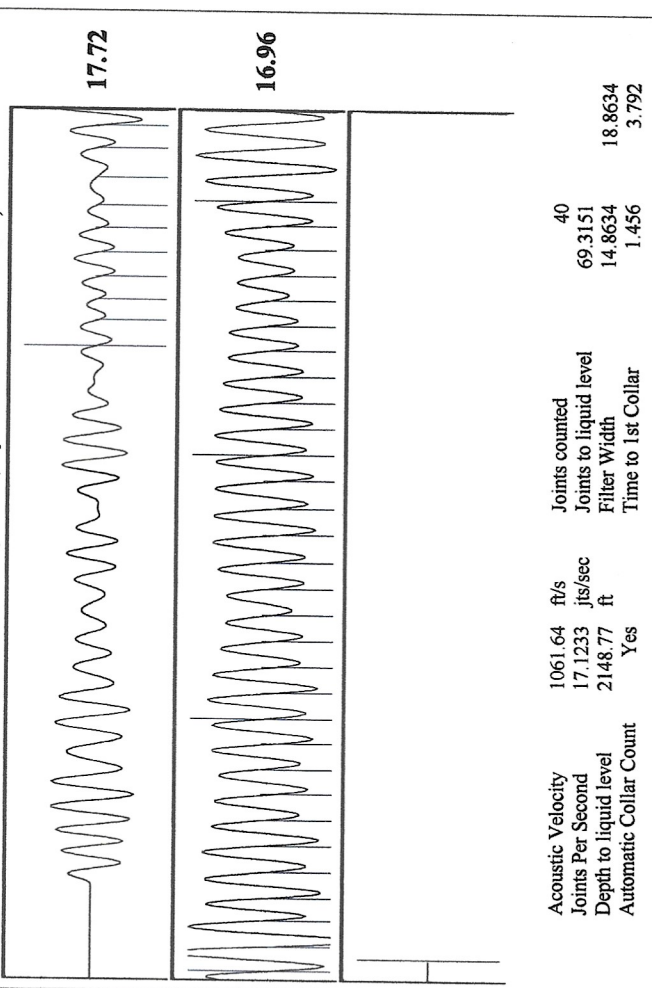


Group: MyWells Well: Strackeljohn #3 (acquired on: 12/27/23 13:41:35)



Change in Pressure 0.22 psi PT15504 Range
 Change in Time 2.00 min

Group: MyWells Well: Strackeljohn #3 (acquired on: 12/27/23 13:41:35)



Acoustic Velocity 1061.64 ft/s Joints counted 40
 Joints Per Second 17.1233 Jts/sec 69.3151
 Depth to liquid level 2148.77 ft Filter Width 18.8634
 Automatic Collar Count Yes Time to 1st Collar 1.456

Conservation Division
District Office No. 1
210 E. Frontview, Suite A
Dodge City, KS 67801



Phone: 620-682-7933
<http://kcc.ks.gov/>

Andrew J. French, Chairperson
Dwight D. Keen, Commissioner
Annie Kuether, Commissioner

Laura Kelly, Governor

01/04/2024

Catherine H Stucky
Hartman Oil Co., Inc.
10500 E BERKELEY SQ PKWY STE 100
WICHITA, KS 67206-6816

Re: Temporary Abandonment
API 15-055-21345-00-00
STRACKEL JOHN 3 3A
SW/4 Sec.03-22S-34W
Finney County, Kansas

Dear Catherine H Stucky:

"Your temporary abandonment (TA) application for the well listed above has been approved. In accordance with K.A.R. 82-3-111 the TA status of this well will expire 01/04/2025.

- * If you return this well to service or plug it, please notify the District Office.
- * If you sell this well you are required to file a Transfer of Operator form, T-1.
- * If the well will remain temporarily abandoned, you must submit a new TA application, CP-111, before 01/04/2025.

You may contact me at the number above if you have questions.

Very truly yours,

Michael Maier"