

KANSAS CORPORATION COMMISSION
OIL & GAS CONSERVATION DIVISION

Form must be Typed
Form must be signed

TEMPORARY ABANDONMENT WELL APPLICATION

All blanks must be complete

OPERATOR: License#
Name:
Address 1:
Address 2:
City: State: Zip:
Contact Person:
Phone:
Contact Person Email:
Field Contact Person:
Field Contact Person Phone:

API No. 15-
Spot Description:
Sec. Twp. S. R.
feet from N / S Line of Section
feet from E / W Line of Section
GPS Location: Lat: , Long:
Datum: NAD27 NAD83 WGS84
County: Elevation: GL KB
Lease Name: Well #:
Well Type: Oil Gas OG WSW Other:
SWD Permit #: ENHR Permit #:
Gas Storage Permit #:
Spud Date: Date Shut-In:

Table with 7 columns: Conductor, Surface, Production, Intermediate, Liner, Tubing. Rows include Size, Setting Depth, Amount of Cement, Top of Cement, Bottom of Cement.

Casing Fluid Level from Surface: How Determined? Date:
Casing Squeeze(s): to w / sacks of cement, to w / sacks of cement. Date:
Do you have a valid Oil & Gas Lease? Yes No
Depth and Type: Junk in Hole at Tools in Hole at Casing Leaks: Yes No Depth of casing leak(s):
Type Completion: ALT. I ALT. II Depth of: DV Tool: w / sacks of cement Port Collar: w / sack of cement
Packer Type: Size: Inch Set at: Feet
Total Depth: Plug Back Depth: Plug Back Method:

Geological Data:

Table with 4 columns: Formation Name, Formation Top, Formation Base, Completion Information. Rows 1 and 2.

UNDER PENALTY OF PERJURY I HEREBY ATTEST THAT THE INFORMATION CONTAINED HEREIN IS TRUE AND CORRECT TO THE BEST OF MY KNOWLEDGE

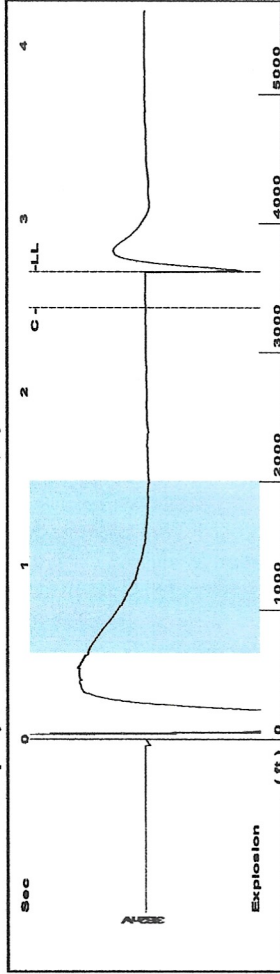
Submitted Electronically

Do NOT Write in This Space - KCC USE ONLY
Date Tested: Results: Date Plugged: Date Repaired: Date Put Back in Service:
Review Completed by: Comments:
TA Approved: Yes Denied Date:

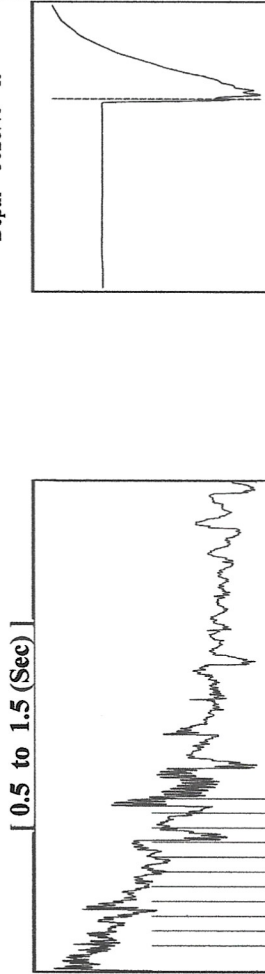
Mail to the Appropriate KCC Conservation Office:

Table with 3 columns: District Office #, Address, Phone. Rows 1-4.

Group: MyWells Well: Veda Loomis #4 (acquired on: 12/19/23 17:07:29)



Filter Type High Pass Automatic Collar Count Yes Time 2.7 sec
 Manual Acoustic Veloc2666.67 ft/s Manual JTS/sec 33.3333 Joints 90.7115 Jts
 Depth 3628.46 ft

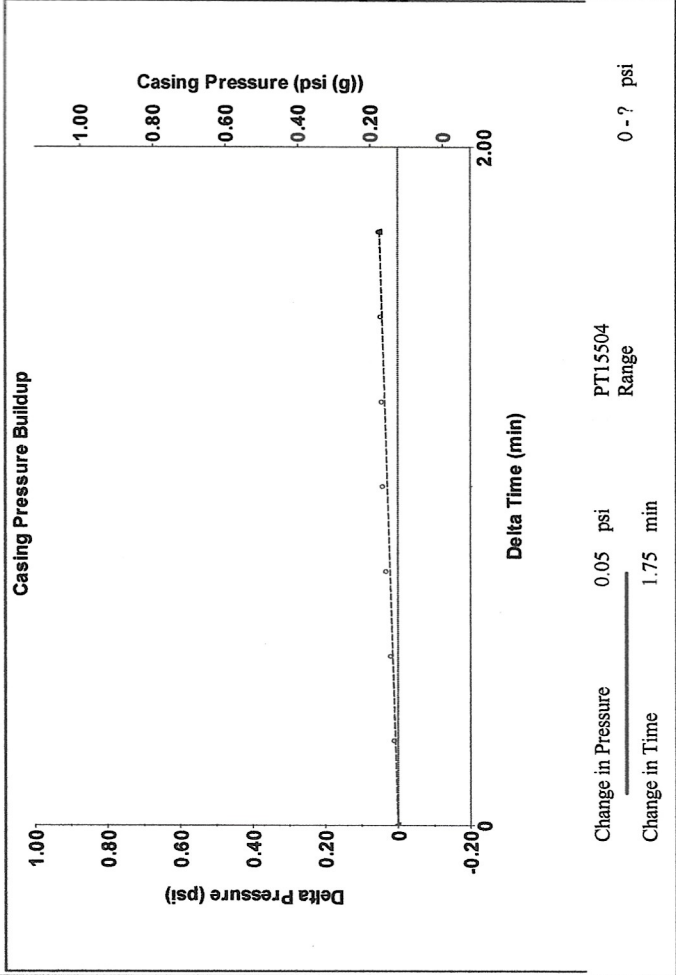


Analysis Method: Automatic

Group: MyWells Well: Veda Loomis #4 (acquired on: 12/19/23 17:07:29)

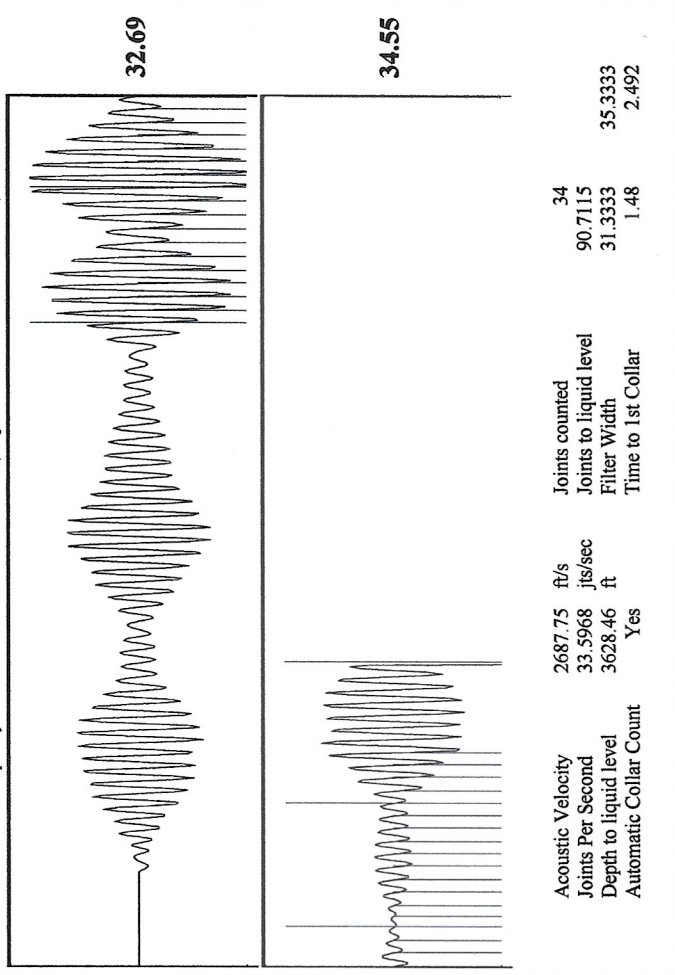
Production	Potential	Casing Pressure	Producing
Oil 0	- * - BBL/D 0.1 psi (g)		Annular Gas Flow - * - Mscf/D
Water 0	- * - BBL/D 0.050 psi		% Liquid 97 %
Gas 0.0	- * - Mscf/D 1.75 min		
IPR Method Vogel	Gas/Liquid Interface Pressure 1.1 psi (g)		Pump Intake - * - psi (g)
PBHP/SBHP - * -	Liquid Level Depth 3628.46 ft		Producing BHP 307.1 psi (g)
Production Efficiency 0.0	Pump Intake Depth - * - ft		Static BHP - * - psi (g)
Oil 39 deg.API	Formation Depth 4324.00 ft		
Water 1.05 Sp.Gr.H2O			
Gas 0.55 Sp.Gr.AIR			
Acoustic Velocity 2687.75 ft/s			
Formation Submergence			
Total Gaseous Liquid Column HT (TVD) 696 ft			
Equivalent Gas Free Liquid HT (TVD) 673 ft			
Acoustic Test			

Group: MyWells Well: Veda Loomis #4 (acquired on: 12/19/23 17:07:29)



Change in Pressure 0.05 psi PT15504 Range
 Change in Time 1.75 min

Group: MyWells Well: Veda Loomis #4 (acquired on: 12/19/23 17:07:29)



Acoustic Velocity 2687.75 ft/s Joints counted 34
 Joints Per Second 33.5968 jts/sec Joints to liquid level 90.7115
 Depth to liquid level 3628.46 ft Filter Width 31.3333
 Automatic Collar Count Yes Time to 1st Collar 1.48

Conservation Division
District Office No. 1
210 E. Frontview, Suite A
Dodge City, KS 67801



Phone: 620-682-7933
<http://kcc.ks.gov/>

Andrew J. French, Chairperson
Dwight D. Keen, Commissioner
Annie Kuether, Commissioner

Laura Kelly, Governor

01/04/2024

Chris Peters
Hartman Oil Co., Inc.
10500 E BERKELEY SQ PKWY STE 100
WICHITA, KS 67206

Re: Temporary Abandonment
API 15-055-20542-00-00
LOOMIS VEDA 4
NW/4 Sec.30-21S-33W
Finney County, Kansas

Dear Chris Peters:

"Your temporary abandonment (TA) application for the well listed above has been approved. In accordance with K.A.R. 82-3-111 the TA status of this well will expire 01/04/2025.

- * If you return this well to service or plug it, please notify the District Office.
- * If you sell this well you are required to file a Transfer of Operator form, T-1.
- * If the well will remain temporarily abandoned, you must submit a new TA application, CP-111, before 01/04/2025.

You may contact me at the number above if you have questions.

Very truly yours,

Michael Maier"