

KANSAS CORPORATION COMMISSION
OIL & GAS CONSERVATION DIVISION

TEMPORARY ABANDONMENT WELL APPLICATION

OPERATOR: License#
Name:
Address 1:
Address 2:
City: State: Zip:
Contact Person:
Phone:
Contact Person Email:
Field Contact Person:
Field Contact Person Phone:

API No. 15-
Spot Description:
Sec. Twp. S. R.
GPS Location: Lat: Long:
Datum: NAD27 NAD83 WGS84
County: Elevation:
Lease Name: Well #:
Well Type: Oil Gas OG WSW Other:
SWD Permit #: ENHR Permit #:
Gas Storage Permit #:
Spud Date: Date Shut-In:

Table with 7 columns: Conductor, Surface, Production, Intermediate, Liner, Tubing. Rows include Size, Setting Depth, Amount of Cement, Top of Cement, Bottom of Cement.

Casing Fluid Level from Surface: How Determined? Date:
Casing Squeeze(s): to w / sacks of cement, to w / sacks of cement. Date:
Do you have a valid Oil & Gas Lease? Yes No
Depth and Type: Junk in Hole at Tools in Hole at Casing Leaks: Yes No Depth of casing leak(s):
Type Completion: ALT. I ALT. II Depth of: DV Tool: w / sacks of cement Port Collar: w / sack of cement
Packer Type: Size: Inch Set at: Feet
Total Depth: Plug Back Depth: Plug Back Method:

Geological Data:

Table with 4 columns: Formation Name, Formation Top, Formation Base, Completion Information. Rows 1 and 2.

UNDER PENALTY OF PERJURY I HEREBY ATTEST THAT THE INFORMATION CONTAINED HEREIN IS TRUE AND CORRECT TO THE BEST OF MY KNOWLEDGE

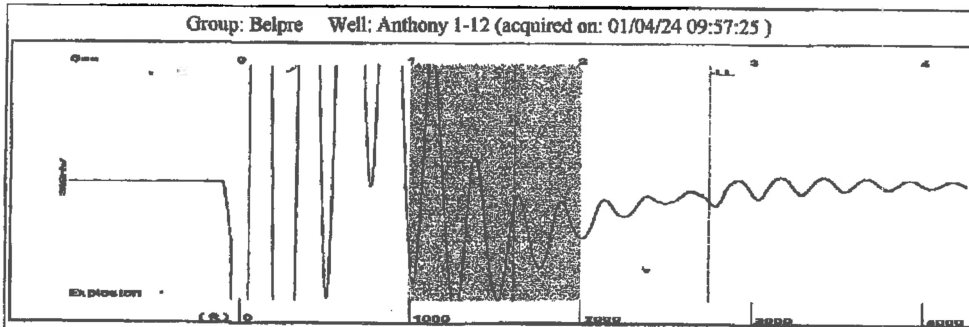
Submitted Electronically

Do NOT Write in This Space - KCC USE ONLY
Date Tested: Results: Date Plugged: Date Repaired: Date Put Back in Service:
Review Completed by: Comments:
TA Approved: Yes Denied Date:

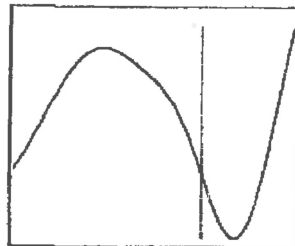
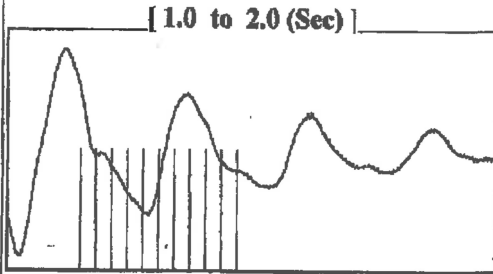
Mail to the Appropriate KCC Conservation Office:

Table with 2 columns: Office Address, Phone. Rows for District Office #1, #2, #3, #4.

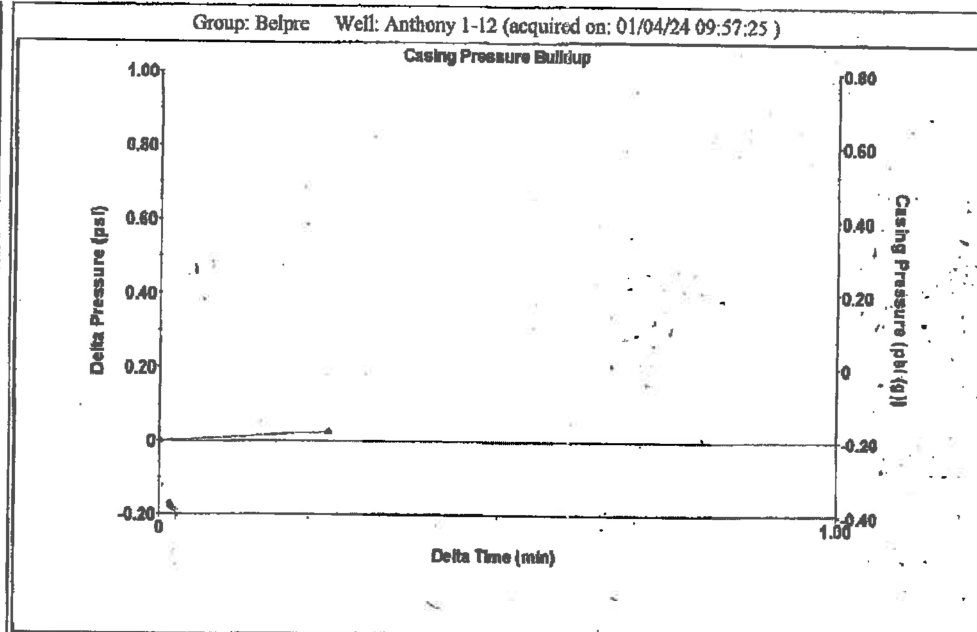




Filter Type High Pass Automatic Collar Count Yes Time 2.741 sec  
 Manual Acoustic Velo 1957.99 ft/s Manual JTS/sec 31.348 Joints 87.8526 Jts  
 Depth 2743.64 ft



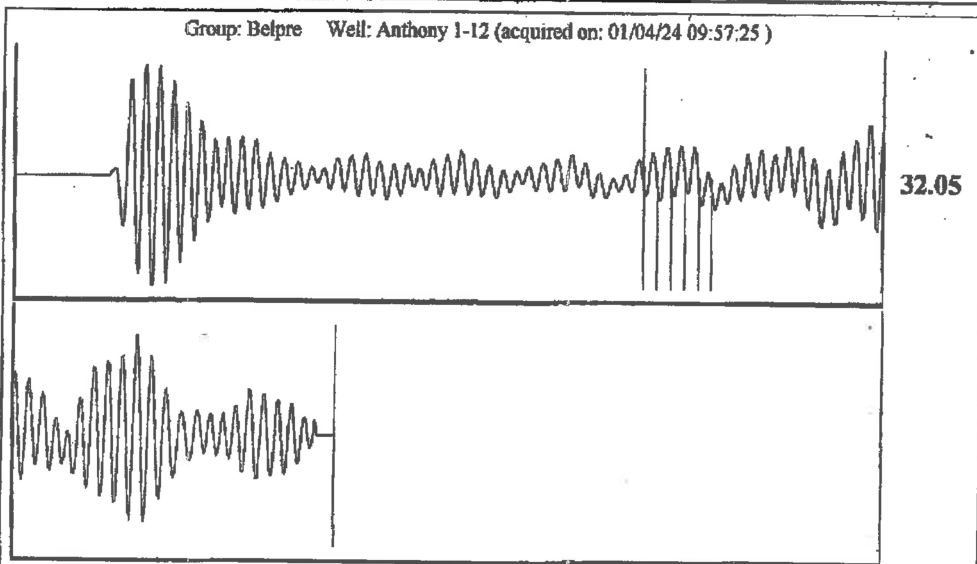
Analysis Method: Automatic



Change in Pressure 0.02 psi PT13440  
 Change in Time 0.25 min Range -0.20 to 1.00 psi

Group: Belpre Well: Anthony 1-12 (acquired on: 01/04/24 09:57:25)

Production Current	Potential	Casing Pressure	Producing
Oil -*- BBL/D	-*- BBL/D	-0.2 psi (g)	
Water -*- BBL/D	-*- BBL/D	Casing Pressure Buildup	Annular Gas Flow
Gas -*- Mscf/D	-*- Mscf/D	0.0 psi	3 Mscf/D
		0.25 min	% Liquid 89 %
IPR Method Vogel		Gas/Liquid Interface Pressure	
PBHP/SBHP -*-		0.6 psi (g)	
Production Efficiency 0.0		Liquid Level Depth	
		2743.64 ft	
Oil 40 deg.API		Pump Intake Depth	
Water 1.05 Sp.Gr.H2O		4060.00 ft	
Gas 0.55 Sp.Gr.AIR		Formation Depth	
		3757.00 ft	
Acoustic Velocity 2001.92 ft/s			
		Pump Intake	
		400.4 psi (g)	
Formation Submergence		Producing BHP	
Total Gaseous Liquid Column HT (TVD) 1316 ft		301.5 psi (g)	
Equivalent Gas Free Liquid HT (TVD) 1205 ft		Static BHP	
		-*- psi (g)	
Acoustic Test			



Acoustic Velocity 2001.92 ft/s Joints counted 5  
 Joints Per Second 32.0513 jts/sec Joints to liquid level 87.8526  
 Depth to liquid level 2743.64 ft Filter Width 29.348 33.348  
 Automatic Collar Count Yes Time to 1st Collar 1.448 1.604

Conservation Division  
District Office No. 1  
210 E. Frontview, Suite A  
Dodge City, KS 67801



Phone: 620-682-7933  
<http://kcc.ks.gov/>

Andrew J. French, Chairperson  
Dwight D. Keen, Commissioner  
Annie Kuether, Commissioner

Laura Kelly, Governor

01/05/2024

Loveness Mpanje  
F. G. Holl Company L.L.C.  
9431 E CENTRAL STE 100  
WICHITA, KS 67206-2563

Re: Temporary Abandonment  
API 15-145-21570-00-00  
ANTHONY 1-12  
SE/4 Sec.12-23S-15W  
Pawnee County, Kansas

Dear Loveness Mpanje:

"Your temporary abandonment (TA) application for the well listed above has been approved. In accordance with K.A.R. 82-3-111 the TA status of this well will expire 01/05/2025.

- \* If you return this well to service or plug it, please notify the District Office.
- \* If you sell this well you are required to file a Transfer of Operator form, T-1.
- \* If the well will remain temporarily abandoned, you must submit a new TA application, CP-111, before 01/05/2025.

You may contact me at the number above if you have questions.

Very truly yours,

Michael Maier"