

KANSAS CORPORATION COMMISSION  
OIL & GAS CONSERVATION DIVISION

TEMPORARY ABANDONMENT WELL APPLICATION

All blanks must be complete

OPERATOR: License# \_\_\_\_\_  
Name: \_\_\_\_\_  
Address 1: \_\_\_\_\_  
Address 2: \_\_\_\_\_  
City: \_\_\_\_\_ State: \_\_\_\_\_ Zip: \_\_\_\_\_ + \_\_\_\_\_  
Contact Person: \_\_\_\_\_  
Phone:( \_\_\_\_\_ ) \_\_\_\_\_  
Contact Person Email: \_\_\_\_\_  
Field Contact Person: \_\_\_\_\_  
Field Contact Person Phone: ( \_\_\_\_\_ ) \_\_\_\_\_

API No. 15- \_\_\_\_\_  
Spot Description: \_\_\_\_\_  
\_\_\_\_ - \_\_\_\_ - \_\_\_\_ - \_\_\_\_ Sec. \_\_\_\_\_ Twp. \_\_\_\_\_ S. R. \_\_\_\_\_  E  W  
\_\_\_\_\_ feet from  N /  S Line of Section  
\_\_\_\_\_ feet from  E /  W Line of Section  
GPS Location: Lat: \_\_\_\_\_, Long: \_\_\_\_\_  
(e.g. xx.xxxxx) (e.g. -xxx.xxxxx)  
Datum:  NAD27  NAD83  WGS84  
County: \_\_\_\_\_ Elevation: \_\_\_\_\_  GL  KB  
Lease Name: \_\_\_\_\_ Well #: \_\_\_\_\_  
Well Type: (check one)  Oil  Gas  OG  WSW  Other: \_\_\_\_\_  
 SWD Permit #: \_\_\_\_\_  ENHR Permit #: \_\_\_\_\_  
 Gas Storage Permit #: \_\_\_\_\_  
Spud Date: \_\_\_\_\_ Date Shut-In: \_\_\_\_\_

|                  | Conductor | Surface | Production | Intermediate | Liner | Tubing |
|------------------|-----------|---------|------------|--------------|-------|--------|
| Size             |           |         |            |              |       |        |
| Setting Depth    |           |         |            |              |       |        |
| Amount of Cement |           |         |            |              |       |        |
| Top of Cement    |           |         |            |              |       |        |
| Bottom of Cement |           |         |            |              |       |        |

Casing Fluid Level from Surface: \_\_\_\_\_ How Determined? \_\_\_\_\_ Date: \_\_\_\_\_  
Casing Squeeze(s): \_\_\_\_\_ to \_\_\_\_\_ w / \_\_\_\_\_ sacks of cement, \_\_\_\_\_ to \_\_\_\_\_ w / \_\_\_\_\_ sacks of cement. Date: \_\_\_\_\_  
(top) (bottom) (top) (bottom)  
Do you have a valid Oil & Gas Lease?  Yes  No  
Depth and Type:  Junk in Hole at \_\_\_\_\_ (depth)  Tools in Hole at \_\_\_\_\_ (depth) Casing Leaks:  Yes  No Depth of casing leak(s): \_\_\_\_\_  
Type Completion:  ALT. I  ALT. II Depth of:  DV Tool: \_\_\_\_\_ w / \_\_\_\_\_ sacks of cement  Port Collar: \_\_\_\_\_ w / \_\_\_\_\_ sack of cement  
(depth) (depth)  
Packer Type: \_\_\_\_\_ Size: \_\_\_\_\_ Inch Set at: \_\_\_\_\_ Feet  
Total Depth: \_\_\_\_\_ Plug Back Depth: \_\_\_\_\_ Plug Back Method: \_\_\_\_\_

Geological Data:

| Formation Name | Formation Top | Formation Base | Completion Information   |
|----------------|---------------|----------------|--|
| 1. _____       | At: _____     | to _____ Feet  | Perforation Interval _____ to _____ Feet or Open Hole Interval _____ to _____ Feet |
| 2. _____       | At: _____     | to _____ Feet  | Perforation Interval _____ to _____ Feet or Open Hole Interval _____ to _____ Feet |

UNDER PENALTY OF PERJURY I HEREBY ATTEST THAT THE INFORMATION CONTAINED HEREIN IS TRUE AND CORRECT TO THE BEST OF MY KNOWLEDGE

Submitted Electronically

|   |  |                |                     |                      |                                 |
|---|--|----------------|---------------------|----------------------|---------------------------------|
| <b>Do NOT Write in This Space - KCC USE ONLY</b>                                      | Date Tested: _____                         | Results: _____ | Date Plugged: _____ | Date Repaired: _____ | Date Put Back in Service: _____ |
|   | Review Completed by: _____ Comments: _____ |                |                     |                      |                                 |
| TA Approved: <input type="checkbox"/> Yes <input type="checkbox"/> Denied Date: _____ |  |                |                     |                      |                                 |

Mail to the Appropriate KCC Conservation Office:

|  |  |                    |
|--|--|--------------------|
|  | KCC District Office #1 - 210 E. Frontview, Suite A, Dodge City, KS 67801               | Phone 620.682.7933 |
|  | KCC District Office #2 - 3450 N. Rock Road, Building 600, Suite 601, Wichita, KS 67226 | Phone 316.337.7400 |
|  | KCC District Office #3 - 137 E. 21st St., Chanute, KS 66720                            | Phone 620.902.6450 |
|  | KCC District Office #4 - 2301 E. 13th Street, Hays, KS 67601-2651                      | Phone 785.261.6250 |

### General

Well ID 127591  
 Well RANDY 3508 2-3H  
 Company Sandridge  
 Operator - \* -  
 Lease Name RANDY 3508 2-3H  
 Elevation 1237.00 ft  
 Production Method Other  
 Dataset Description

Comment

### Surface Unit

Manufacturer - \* -  
 Unit Class Conventional  
 Unit API Number - \* -  
 Measured Stroke Length 100.000 in  
 Rotation CW  
 Counter Balance Effect (Weights Level) - \* - Klb  
 Weight Of Counter Weights 2000 lb

### Prime Mover

Motor Type Electric  
 Rated HP - \* - HP  
 Run Time 24 hr/day  
 MFG/Comment - \* -

### Electric Motor Parameters

Rated Full Load AMPS - \* -  
 Rated Full Load RPM - \* -  
 Synchronous RPM 1200  
 Voltage - \* -  
 Hertz 60  
 Phase 3  
 Power Consumption 5  
 Power Demand 8 \$/KW

### Tubulars

Tubing OD 2.875 in  
 Casing OD 7.000 in  
 Average Joint Length 31.700 ft  
 Anchor Depth - \* - ft  
 Kelly Bushing 18.00 ft

### Pump

Plunger Diameter - \* - in  
 Pump Intake Depth 5349.00 ft  
 \*\*Total Rod Length < Pump Depth

### Polished Rod

Polished Rod Diameter - \* - in

### Rod String

|              | Top Taper | Taper 2 | Taper 3 | Taper 4 | Taper 5 | Taper 6  |
|--------------|-----------|---------|---------|---------|---------|----------|
| Rod Type     | - * -     | - * -   | - * -   | - * -   | - * -   | - * -    |
| Rod Length   | - * -     | - * -   | - * -   | - * -   | - * -   | - * - ft |
| Rod Diameter | - * -     | - * -   | - * -   | - * -   | - * -   | - * - in |
| Rod Weight   | 0.0       | 0.0     | 0.0     | 0.0     | 0.0     | 0.0 lb   |

Total Rod Length 0  
 Total Rod Weight 0.00

Damp Up 0.05  
 Damp Down 0.05

### Conditions

#### Pressure

Static BHP 1318.2 psi (g)  
 Static BHP Method Acoustic  
 Static BHP Date 07/10/2019

Producing BHP 762.3 psi (g)  
 Producing BHP Method Acoustic  
 Producing BHP Date 12/07/2023  
 Formation Depth 7487.00 ft

#### Surface Producing Pressures

Tubing Pressure 100.0 psi (g)  
 Casing Pressure 253.6 psi (g)

#### Casing Pressure Buildup

Change in Pressure 0.8 psi  
 Over Change in Time 1.50 min

#### Production

Oil Production 0 BBL/D  
 Water Production 1 BBL/D  
 Gas Production - \* - Mscf/D  
 Production Date 05/08/2017

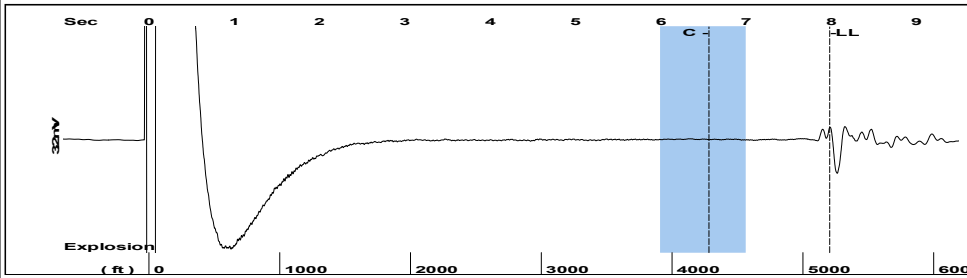
#### Temperatures

Surface Temperature 70 deg F  
 Bottomhole Temperature 150 deg F

#### Fluid Properties

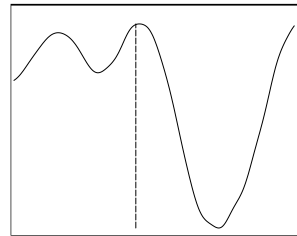
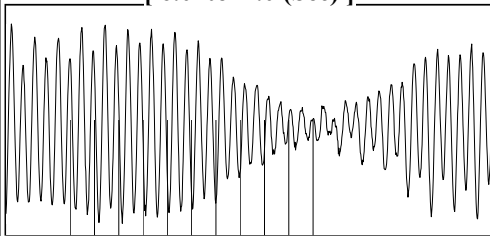
Oil API 40 deg.API  
 Water Specific Gravity 1.05 Sp.Gr.H2O

Group: December 2023 Well: RANDY 3508 2-3H (acquired on: 12/07/23 12:32:47)



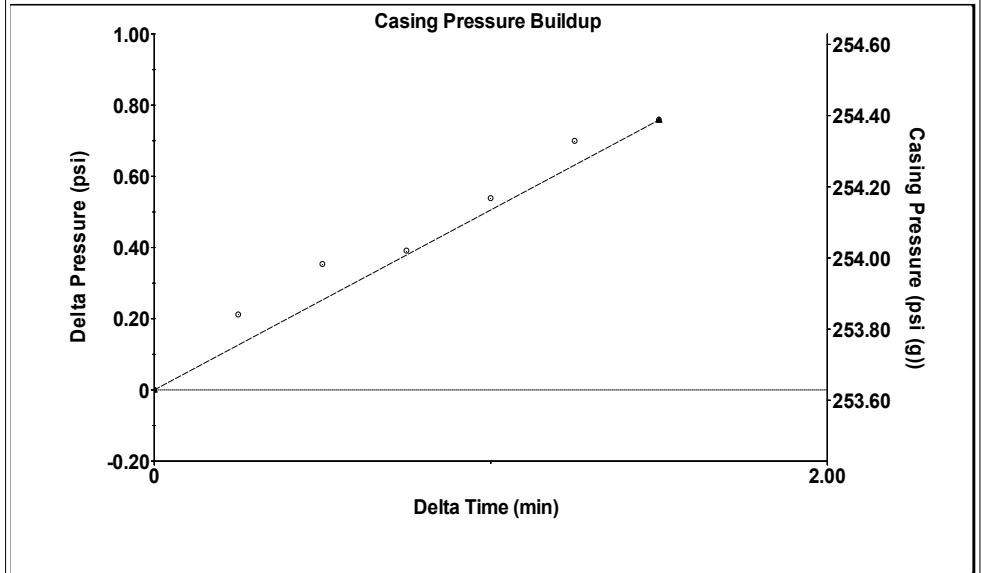
Filter Type High Pass Automatic Collar Count Yes Time 7.98 sec  
 Manual Acoustic Veloc 1270.54 ft/s Manual JTS/sec 20.0401 Joints 164.187 Jts  
 Depth 5204.72 ft

[ 6.0 to 7.0 (Sec) ]



Analysis Method: Automatic

Group: December 2023 Well: RANDY 3508 2-3H (acquired on: 12/07/23 12:32:47)

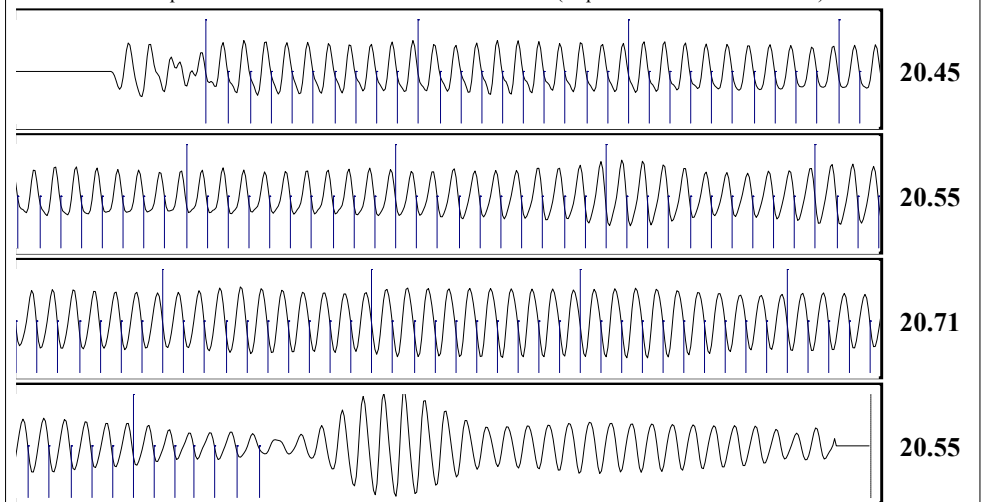


Change in Pressure 0.76 psi PT16722  
 Change in Time 1.50 min Range 0 - ? psi

Group: December 2023 Well: RANDY 3508 2-3H (acquired on: 12/07/23 12:32:47)

|                       |                |              |                               |                     |
|-----------------------|----------------|--------------|-------------------------------|---------------------|
| Production Current    |                | Potential    | Casing Pressure               | Static              |
| Oil                   | 0              | - * - BBL/D  | 253.6 psi (g)                 | Oil Column Height   |
| Water                 | 1              | - * - BBL/D  | Casing Pressure Buildup       | MD 0 ft             |
| Gas                   | - * -          | - * - Mscf/D | 0.8 psi                       | Water Column Height |
|                       |                |              | 1.50 min                      | MD 2264 ft          |
| IPR Method            |                | Vogel        | Gas/Liquid Interface Pressure | Static BHP          |
| PBHP/SBHP             |                | - * -        | 288.7 psi (g)                 | 1318.2 psi (g)      |
| Production Efficiency |                | 0.0          | Liquid Level Depth            |                     |
|                       |                |              | 5204.72 ft                    |                     |
| Oil                   | 40 deg.API     |              | Tubing Intake Depth           |                     |
| Water                 | 1.05 Sp.Gr.H2O |              | 5349.00 ft                    |                     |
| Gas                   | 0.67 Sp.Gr.AIR |              | Formation Depth               |                     |
|                       |                |              | 7487.00 ft                    |                     |
| Acoustic Velocity     | 1304.44 ft/s   |              |                               |                     |

Group: December 2023 Well: RANDY 3508 2-3H (acquired on: 12/07/23 12:32:47)



Acoustic Velocity 1304.44 ft/s Joints counted 126  
 Joints Per Second 20.5748 jts/sec Joints to liquid level 164.187  
 Depth to liquid level 5204.72 ft Filter Width 18.0401 22.0401  
 Automatic Collar Count Yes Time to 1st Collar 0.44 6.564

Conservation Division  
District Office No. 2  
3450 N. Rock Road  
Building 600, Suite 601  
Wichita, KS 67226



Phone: 316-337-7400  
<http://kcc.ks.gov/>

Andrew J. French, Chairperson  
Dwight D. Keen, Commissioner  
Annie Kuether, Commissioner

Laura Kelly, Governor

01/05/2024

Leah Medrana  
SandRidge Exploration and Production LLC  
1 E SHERIDAN AVE STE 500  
OKLAHOMA CITY, OK 73104-2494

Re: Temporary Abandonment  
API 15-077-22085-02-00  
RANDY 3508 2-3H 1L  
SW/4 Sec.34-34S-08W  
Harper County, Kansas

Dear Leah Medrana:

"Your temporary abandonment (TA) application for the well listed above has been approved. In accordance with K.A.R. 82-3-111 the TA status of this well will expire 01/05/2025.

- \* If you return this well to service or plug it, please notify the District Office.
- \* If you sell this well you are required to file a Transfer of Operator form, T-1.
- \* If the well will remain temporarily abandoned, you must submit a new TA application, CP-111, before 01/05/2025.

You may contact me at the number above if you have questions.

Very truly yours,

Jeff Klock, District Supervisor"