

KANSAS CORPORATION COMMISSION
OIL & GAS CONSERVATION DIVISION

Form must be Typed
Form must be signed

TEMPORARY ABANDONMENT WELL APPLICATION

All blanks must be complete

OPERATOR: License#
Name:
Address 1:
Address 2:
City: State: Zip:
Contact Person:
Phone:
Contact Person Email:
Field Contact Person:
Field Contact Person Phone:

API No. 15-
Spot Description:
Sec. Twp. S. R.
feet from N / S Line of Section
feet from E / W Line of Section
GPS Location: Lat: , Long:
Datum: NAD27 NAD83 WGS84
County: Elevation: GL KB
Lease Name: Well #:
Well Type: (check one) Oil Gas OG WSW Other:
SWD Permit #: ENHR Permit #:
Gas Storage Permit #:
Spud Date: Date Shut-In:

Table with 7 columns: Conductor, Surface, Production, Intermediate, Liner, Tubing. Rows include Size, Setting Depth, Amount of Cement, Top of Cement, Bottom of Cement.

Casing Fluid Level from Surface: How Determined? Date:
Casing Squeeze(s): to w / sacks of cement, to w / sacks of cement. Date:
Do you have a valid Oil & Gas Lease? Yes No
Depth and Type: Junk in Hole at Tools in Hole at Casing Leaks: Yes No Depth of casing leak(s):
Type Completion: ALT. I ALT. II Depth of: DV Tool: w / sacks of cement Port Collar: w / sack of cement
Packer Type: Size: Inch Set at: Feet
Total Depth: Plug Back Depth: Plug Back Method:

Geological Data:

Table with 4 columns: Formation Name, Formation Top, Formation Base, Completion Information. Rows 1 and 2.

UNDER PENALTY OF PERJURY I HEREBY ATTEST THAT THE INFORMATION CONTAINED HEREIN IS TRUE AND CORRECT TO THE BEST OF MY KNOWLEDGE

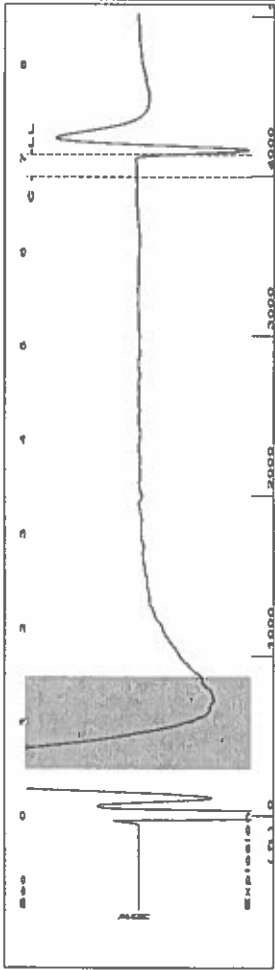
Submitted Electronically

Form with fields: Do NOT Write in This Space - KCC USE ONLY, Date Tested, Results, Date Plugged, Date Repaired, Date Put Back in Service, Review Completed by, Comments, TA Approved: Yes Denied, Date.

Mail to the Appropriate KCC Conservation Office:

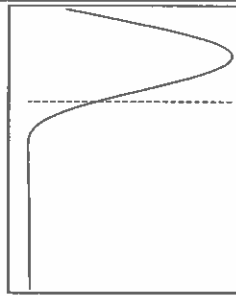
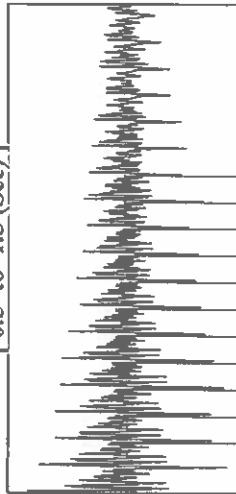
Table with 2 columns: Office Address, Phone. Rows for KCC District Office #1, #2, #3, #4.

Group: TAD Well: atkins m-2 (acquired on: 08/02/23 13:39:29)



Filter Type High Pass Automatic Collar Count Yes Time 7.038 sec
 Manual Acoustic Veloc 154.83 ft/s Manual JTS/sec 18.2149 Jts
 Depth 4130.30 ft

[0.5 to 1.5 (Sec)]

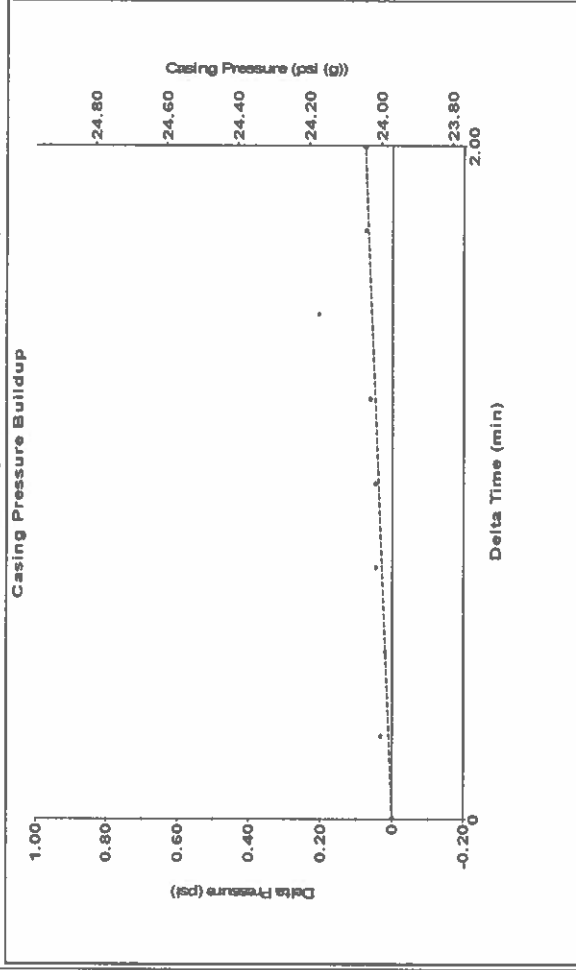


Analysis Method: Automatic

Group: TAD Well: atkins m-2 (acquired on: 08/02/23 13:39:29)

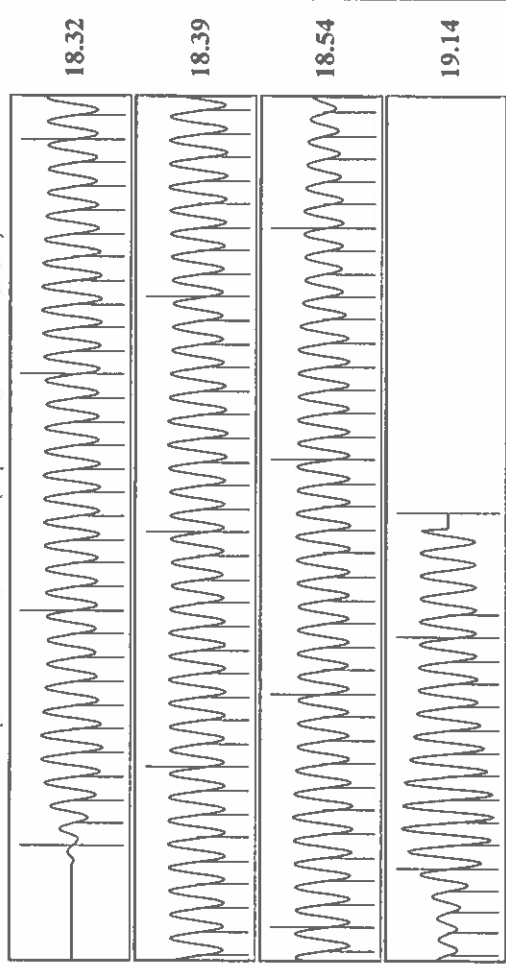
Production Current	Potential	Casing Pressure	24.0 psi (g)
Oil - * -	- * - BBL/D	Casing Pressure Buildup	0.076 psi
Water - * -	- * - BBL/D	2.00 min	
Gas - * -	- * - Mscf/D	Gas/Liquid Interface Pressure	28.6 psi (g)
IPR Method	Vogel	Liquid Level Depth	4130.30 ft
PBHP/SBHP	- * -	Pump Intake Depth	5191.00 ft
Production Efficiency	0.0	Formation Depth	5134.00 ft
Oil 40 deg API			
Water 1.05 Sp.Gr.H2O			
Gas 0.82 Sp.Gr.AIR			
Acoustic Velocity	1173.71 ft/s		
Formation Submergence			
Total Gaseous Liquid Column HT (TVD)	1061 ft		
Equivalent Gas Free Liquid HT (TVD)	999 ft		
Acoustic Test			
		Producing	
		Annular Gas Flow	2 Mscf/D
		% Liquid	94 %
		Pump Intake	364.9 psi (g)
		Producing BHP	346.1 psi (g)
		Static BHP	- * - psi (g)

Group: TAD Well: atkins m-2 (acquired on: 08/02/23 13:39:29)



Change in Pressure 0.08 psi PT 14654 Range
 Change in Time 2.00 min

Group: TAD Well: atkins m-2 (acquired on: 08/02/23 13:39:29)



Acoustic Velocity	1173.71 ft/s	Joints counted	121
Joints Per Second	18.5129 jts/sec	Joints to liquid level	130.293
Depth to liquid level	4130.3 ft	Filter Width	16.2149
Automatic Collar Count	Yes	Time to 1st Collar	20.2149
			6.8

Conservation Division
District Office No. 1
210 E. Frontview, Suite A
Dodge City, KS 67801



Phone: 620-682-7933
<http://kcc.ks.gov/>

Andrew J. French, Chairperson
Dwight D. Keen, Commissioner
Annie Kuether, Commissioner

Laura Kelly, Governor

01/09/2024

Katherine McClurkan
Merit Energy Company, LLC
13727 Noel Road, Suite 1200
Dallas, TX 75240

Re: Temporary Abandonment
API 15-081-21366-00-00
Atkins M 2
NW/4 Sec.17-27S-33W
Haskell County, Kansas

Dear Katherine McClurkan:

Your application for Temporary Abandonment (TA) for the above-listed well is denied for the following reasons(s):

Shut-in Over 10 years

Pursuant to K.A.R. 82-3-111, the well must be plugged, or returned to service, or obtain temporary abandonment status by 02/08/2024.

This deadline does NOT override any compliance deadline given to you in any Commission Order.

You may contact me if you have any questions.

Sincerely,
Michael Maier
KCC DISTRICT 1