

KANSAS CORPORATION COMMISSION
OIL & GAS CONSERVATION DIVISION

TEMPORARY ABANDONMENT WELL APPLICATION

OPERATOR: License#
Name:
Address 1:
Address 2:
City: State: Zip:
Contact Person:
Phone:
Contact Person Email:
Field Contact Person:
Field Contact Person Phone:

API No. 15-
Spot Description:
Sec. Twp. S. R.
GPS Location: Lat: Long:
Datum: NAD27 NAD83 WGS84
County: Elevation:
Lease Name: Well #:
Well Type: Oil Gas OG WSW Other:
SWD Permit #: ENHR Permit #:
Gas Storage Permit #:
Spud Date: Date Shut-In:

Table with 7 columns: Conductor, Surface, Production, Intermediate, Liner, Tubing. Rows include Size, Setting Depth, Amount of Cement, Top of Cement, Bottom of Cement.

Casing Fluid Level from Surface: How Determined? Date:
Casing Squeeze(s): to w / sacks of cement, to w / sacks of cement. Date:
Do you have a valid Oil & Gas Lease? Yes No
Depth and Type: Junk in Hole at Tools in Hole at Casing Leaks: Yes No Depth of casing leak(s):
Type Completion: ALT. I ALT. II Depth of: DV Tool: w / sacks of cement Port Collar: w / sack of cement
Packer Type: Size: Inch Set at: Feet
Total Depth: Plug Back Depth: Plug Back Method:

Geological Date:

Table with 4 columns: Formation Name, Formation Top, Formation Base, Completion Information. Rows 1 and 2.

UNDER PENALTY OF PERJURY I HEREBY ATTEST THAT THE INFORMATION CONTAINED HEREIN IS TRUE AND CORRECT TO THE BEST OF MY KNOWLEDGE

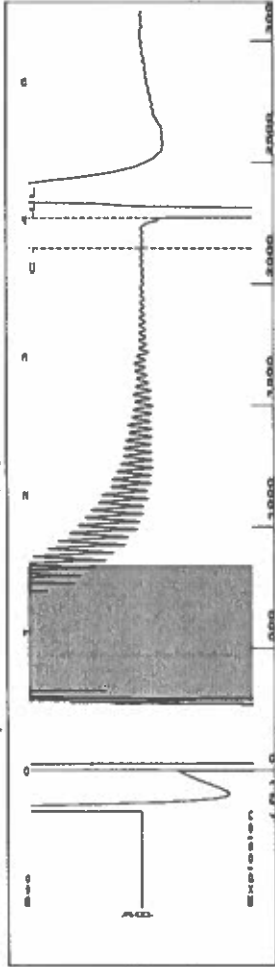
Submitted Electronically

Do NOT Write in This Space - KCC USE ONLY
Date Tested: Results: Date Plugged: Date Repaired: Date Put Back in Service:
Review Completed by: Comments:
TA Approved: Yes Denied Date:

Mail to the Appropriate KCC Conservation Office:

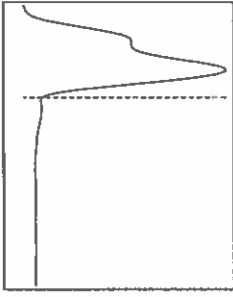
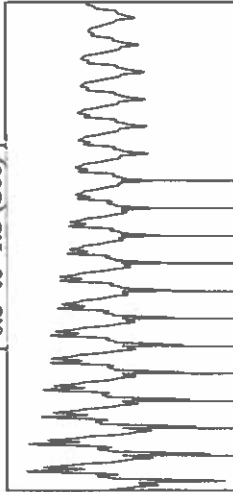
Table with 3 columns: District Office #, Address, Phone. Rows 1-4.

Group: TAD Well: Devore D-1 (acquired on: 05/04/23 10:52:24)



Filter Type High Pass Automatic Collar Count Yes Time 4.012 sec
 Manual Acoustic Veloc 124.11 ft/s Manual JTS/sec 17,7305 Joints 71,6429 Jts
 Depth 2271.08 ft

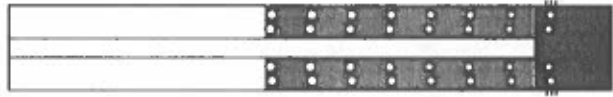
[0.5 to 1.5 (Sec)]



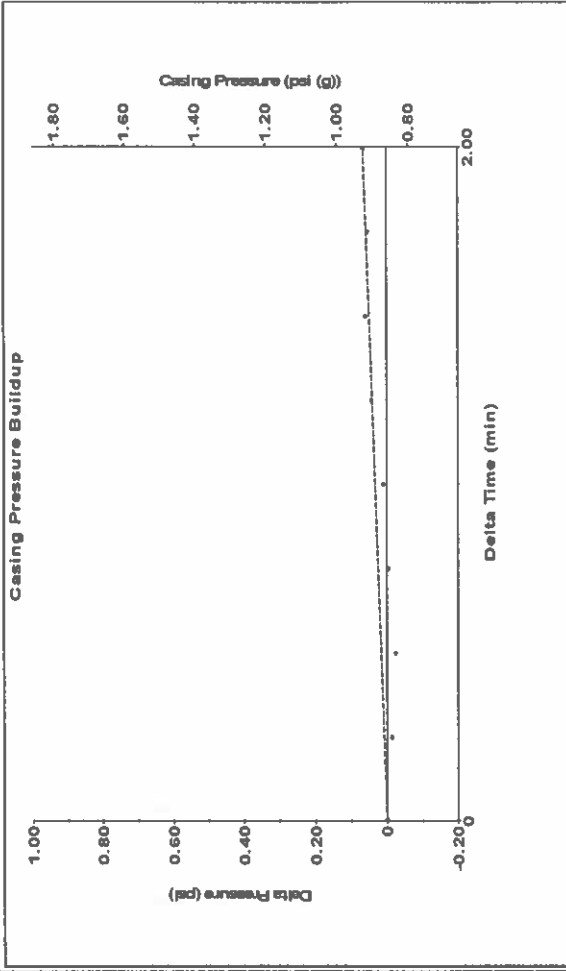
Analysis Method: Automatic

Group: TAD Well: Devore D-1 (acquired on: 05/04/23 10:52:24)

Production	Potential	Casing Pressure	0.9 psi (g)
Current	- * - BBL/D	Casing Pressure Buildup	0.067 psi
Oil	- * - BBL/D	2.00 min	
Water	- * - Mscf/D	Gas/Liquid Interface Pressure	1.9 psi (g)
Gas	- * - Mscf/D		
IPR Method	Vogel	Liquid Level Depth	2271.08 ft
PBHP/SBHP	- * -	Pump Intake Depth	5376.00 ft
Production Efficiency	0.0	Formation Depth	5555.00 ft
Oil	40 deg API		
Water	1.05 Sp.Gr.H2O		
Gas	0.85 Sp.Gr.AIR		
Acoustic Velocity	1132.14 ft/s		
Formation Submergence			
Total Gaseous Liquid Column HT (TVD)	3105 ft		
Equivalent Gas Free Liquid HT (TVD)	3058 ft		
Acoustic Test			

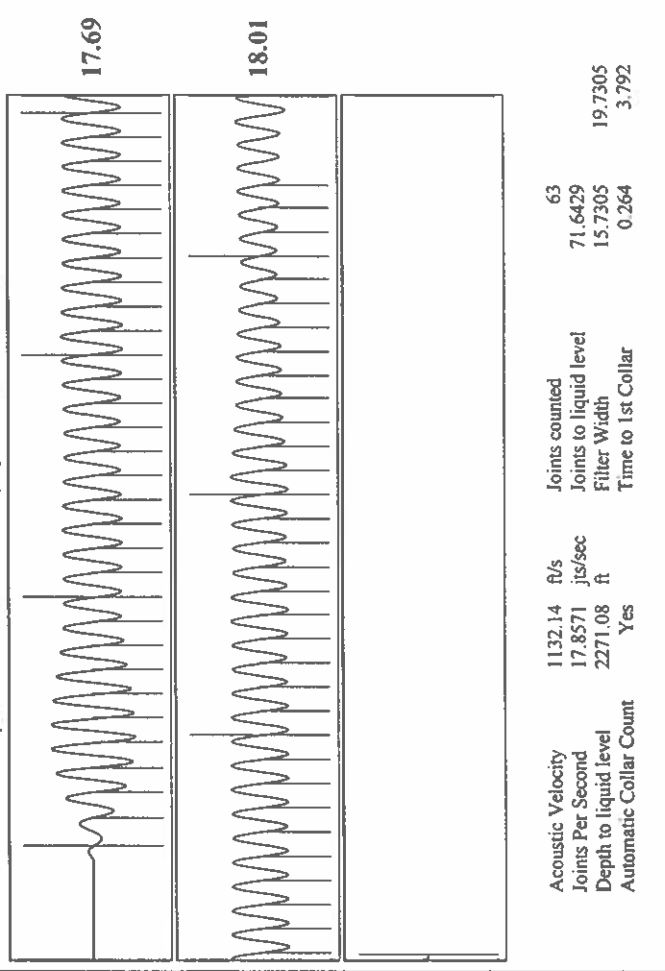


Group: TAD Well: Devore D-1 (acquired on: 05/04/23 10:52:24)



Change in Pressure 0.07 psi PT 14654 Range
 Change in Time 2.00 min 0 - ? psi

Group: TAD Well: Devore D-1 (acquired on: 05/04/23 10:52:24)



Acoustic Velocity 1132.14 ft/s Joints counted 63
 Joints Per Second 17.8571 jts/sec Joints to liquid level 71.6429
 Depth to liquid level 2271.08 ft Filter Width 15.7305
 Automatic Collar Count Yes Time to 1st Collar 0.264 3.792

Conservation Division
District Office No. 1
210 E. Frontview, Suite A
Dodge City, KS 67801



Phone: 620-682-7933
<http://kcc.ks.gov/>

Andrew J. French, Chairperson
Dwight D. Keen, Commissioner
Annie Kuether, Commissioner

Laura Kelly, Governor

01/09/2024

Katherine McClurkan
Merit Energy Company, LLC
13727 Noel Road, Suite 1200
Dallas, TX 75240

Re: Temporary Abandonment
API 15-055-22194-00-01
DeVore D 1
NW/4 Sec.27-26S-33W
Finney County, Kansas

Dear Katherine McClurkan:

Your application for Temporary Abandonment (TA) for the above-listed well is denied for the following reasons(s):

Shut-in Over 10 years

Pursuant to K.A.R. 82-3-111, the well must be plugged, or returned to service, or obtain temporary abandonment status by 02/08/2024.

This deadline does NOT override any compliance deadline given to you in any Commission Order.

You may contact me if you have any questions.

Sincerely,
Michael Maier
KCC DISTRICT 1