

KANSAS CORPORATION COMMISSION
OIL & GAS CONSERVATION DIVISION

Form must be Typed
Form must be signed

TEMPORARY ABANDONMENT WELL APPLICATION

All blanks must be complete

OPERATOR: License#
Name:
Address 1:
Address 2:
City: State: Zip:
Contact Person:
Phone:
Contact Person Email:
Field Contact Person:
Field Contact Person Phone:

API No. 15-
Spot Description:
Sec. Twp. S. R.
feet from N / S Line of Section
feet from E / W Line of Section
GPS Location: Lat: , Long:
Datum: NAD27 NAD83 WGS84
County: Elevation: GL KB
Lease Name: Well #:
Well Type: (check one) Oil Gas OG WSW Other:
SWD Permit #: ENHR Permit #:
Gas Storage Permit #:
Spud Date: Date Shut-In:

Table with 7 columns: Conductor, Surface, Production, Intermediate, Liner, Tubing. Rows include Size, Setting Depth, Amount of Cement, Top of Cement, Bottom of Cement.

Casing Fluid Level from Surface: How Determined? Date:
Casing Squeeze(s): to w / sacks of cement, to w / sacks of cement. Date:
Do you have a valid Oil & Gas Lease? Yes No
Depth and Type: Junk in Hole at Tools in Hole at Casing Leaks: Yes No Depth of casing leak(s):
Type Completion: ALT. I ALT. II Depth of: DV Tool: w / sacks of cement Port Collar: w / sack of cement
Packer Type: Size: Inch Set at: Feet
Total Depth: Plug Back Depth: Plug Back Method:

Geological Date:

Table with 4 columns: Formation Name, Formation Top, Formation Base, Completion Information. Rows 1 and 2.

UNDER PENALTY OF PERJURY I HEREBY ATTEST THAT THE INFORMATION CONTAINED HEREIN IS TRUE AND CORRECT TO THE BEST OF MY KNOWLEDGE

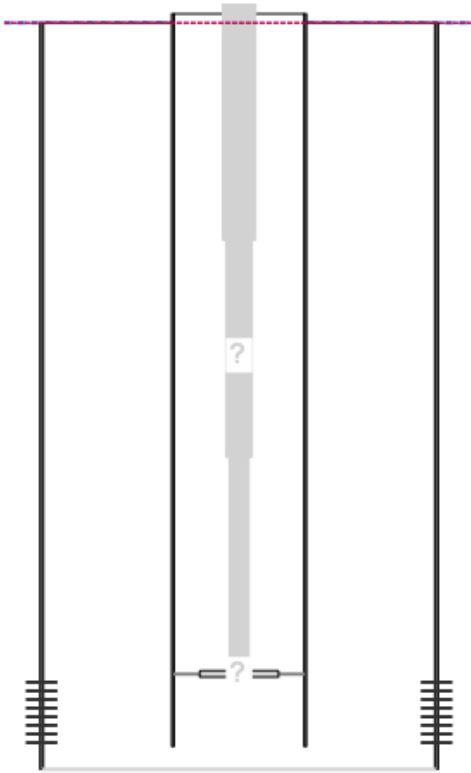
Submitted Electronically

Do NOT Write in This Space - KCC USE ONLY
Date Tested: Results: Date Plugged: Date Repaired: Date Put Back in Service:
Review Completed by: Comments:
TA Approved: Yes Denied Date:

Mail to the Appropriate KCC Conservation Office:

Table with 3 columns: District Office #, Address, Phone. Includes map of Kansas with numbered districts 1-4.

**Producing Shot  
Manual Input**



**Manually Entered Production**

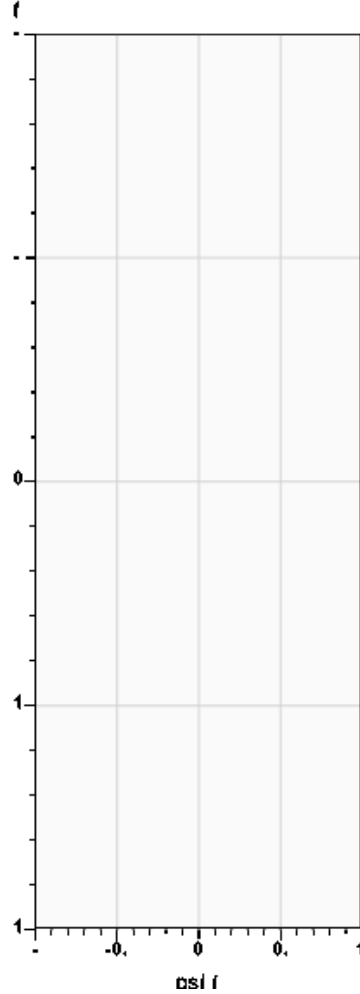
Liquid Level 0 ft  
Percent Liquid 100.00%

**Static Bottomhole Pressure**

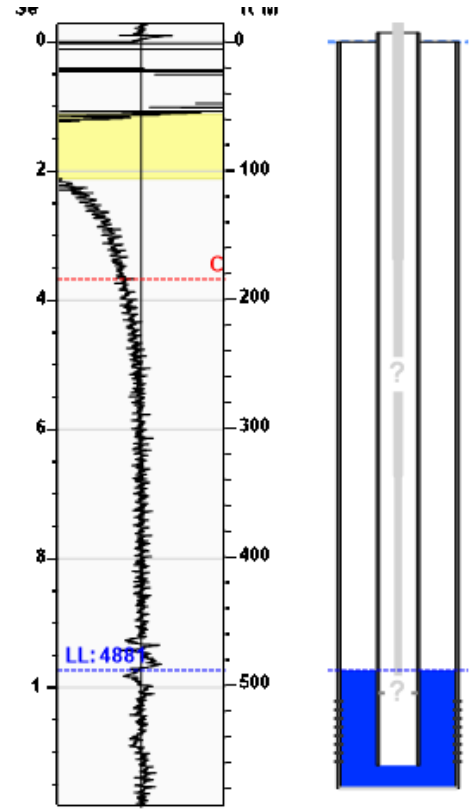
\*.\* psi (g) @ \*.\* ft TVD

Static Liquid Level 4881 ft MD  
Oil Column Height \*.\* ft MD  
Water Column Height \*.\* ft MD

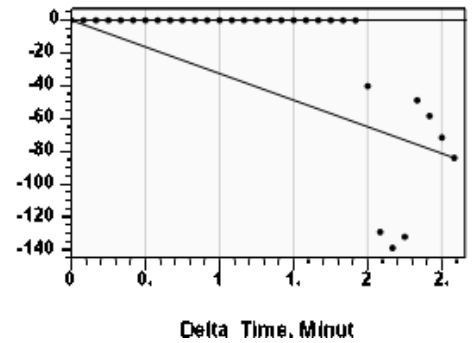
**Pressure Profile (TVD)**



**Static Shot  
12/15/2023 11:30:04AM**



**Casing Pressure Buildup**



Casing Pressure -2.2 psi (g)  
Buildup -838.5 psi (g)  
Buildup Time 2 min 35 sec  
Gas Gravity

**Well Test**

Oil 10 BBL/D  
Water 90 BBL/D

**Comments and  
Recommendations**

**Casing Pressure**

Pressure -2.2 psi (g)

**Annular Gas Flow**

Gas Flow \*.\* Mscf/D

Conservation Division  
District Office No. 1  
210 E. Frontview, Suite A  
Dodge City, KS 67801



Phone: 620-682-7933  
<http://kcc.ks.gov/>

Andrew J. French, Chairperson  
Dwight D. Keen, Commissioner  
Annie Kuether, Commissioner

Laura Kelly, Governor

01/16/2024

MARK LUCKIE  
JBG Oil & Gas Company LLC  
2622 CR GG  
ASHLAND, KS 67831-3125

Re: Temporary Abandonment  
API 15-025-21128-00-00  
TUTTLE 1-16  
NE/4 Sec.16-35S-21W  
Clark County, Kansas

Dear MARK LUCKIE:

"Your temporary abandonment (TA) application for the well listed above has been approved. In accordance with K.A.R. 82-3-111 the TA status of this well will expire 01/16/2025.

- \* If you return this well to service or plug it, please notify the District Office.
- \* If you sell this well you are required to file a Transfer of Operator form, T-1.
- \* If the well will remain temporarily abandoned, you must submit a new TA application, CP-111, before 01/16/2025.

You may contact me at the number above if you have questions.

Very truly yours,

Michael Maier"