

KANSAS CORPORATION COMMISSION
OIL & GAS CONSERVATION DIVISION

TEMPORARY ABANDONMENT WELL APPLICATION

OPERATOR: License#
Name:
Address 1:
Address 2:
City: State: Zip:
Contact Person:
Phone:
Contact Person Email:
Field Contact Person:
Field Contact Person Phone:

API No. 15-
Spot Description:
Sec. Twp. S. R.
GPS Location: Lat: Long:
Datum: NAD27 NAD83 WGS84
County: Elevation:
Lease Name: Well #:
Well Type: Oil Gas OG WSW Other:
SWD Permit #: ENHR Permit #:
Gas Storage Permit #:
Spud Date: Date Shut-In:

Table with 7 columns: Conductor, Surface, Production, Intermediate, Liner, Tubing. Rows include Size, Setting Depth, Amount of Cement, Top of Cement, Bottom of Cement.

Casing Fluid Level from Surface: How Determined? Date:
Casing Squeeze(s): to w / sacks of cement, to w / sacks of cement. Date:
Do you have a valid Oil & Gas Lease? Yes No
Depth and Type: Junk in Hole at Tools in Hole at Casing Leaks: Yes No Depth of casing leak(s):
Type Completion: ALT. I ALT. II Depth of: DV Tool: w / sacks of cement Port Collar: w / sack of cement
Packer Type: Size: Inch Set at: Feet
Total Depth: Plug Back Depth: Plug Back Method:

Geological Date:

Table with 4 columns: Formation Name, Formation Top, Formation Base, Completion Information. Rows 1 and 2.

UNDER PENALTY OF PERJURY I HEREBY ATTEST THAT THE INFORMATION CONTAINED HEREIN IS TRUE AND CORRECT TO THE BEST OF MY KNOWLEDGE

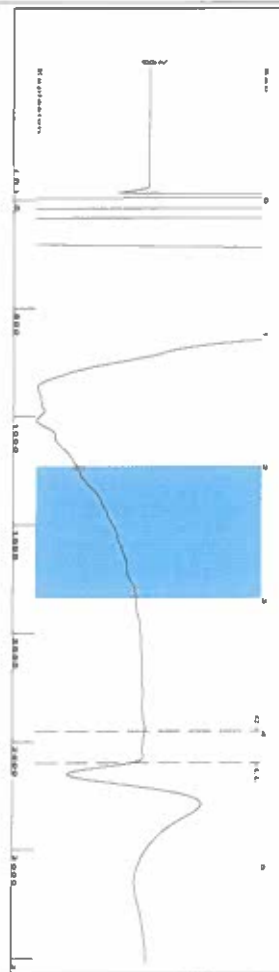
Submitted Electronically

Do NOT Write in This Space - KCC USE ONLY
Date Tested: Results: Date Plugged: Date Repaired: Date Put Back in Service:
Review Completed by: Comments:
TA Approved: Yes Denied Date:

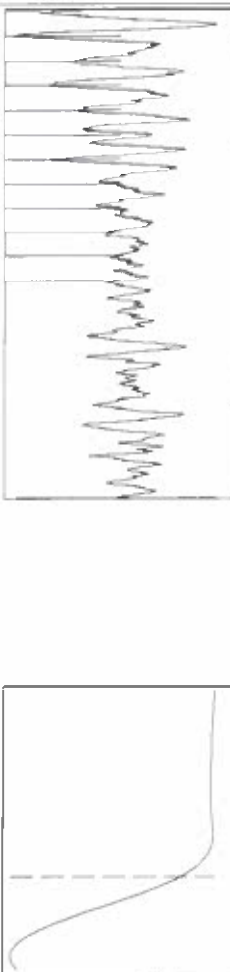
Mail to the Appropriate KCC Conservation Office:

Table with 2 columns: Office Address, Phone. Rows for District Office #1, #2, #3, #4.

Group: SUBLETTE Well: Unruh B-4 (acquired on: 01/24/24 10:28:35)



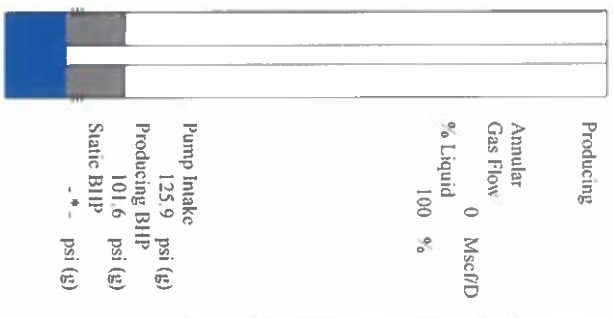
Filter Type High Pass Automatic Collar Count Yes
 Manual Acoustic Vel 1270.54 N/S Manual JTS/sec 20.0401
 Time 4.228 sec
 Joints 82.0086 J/s
 Depth 2599.67 ft



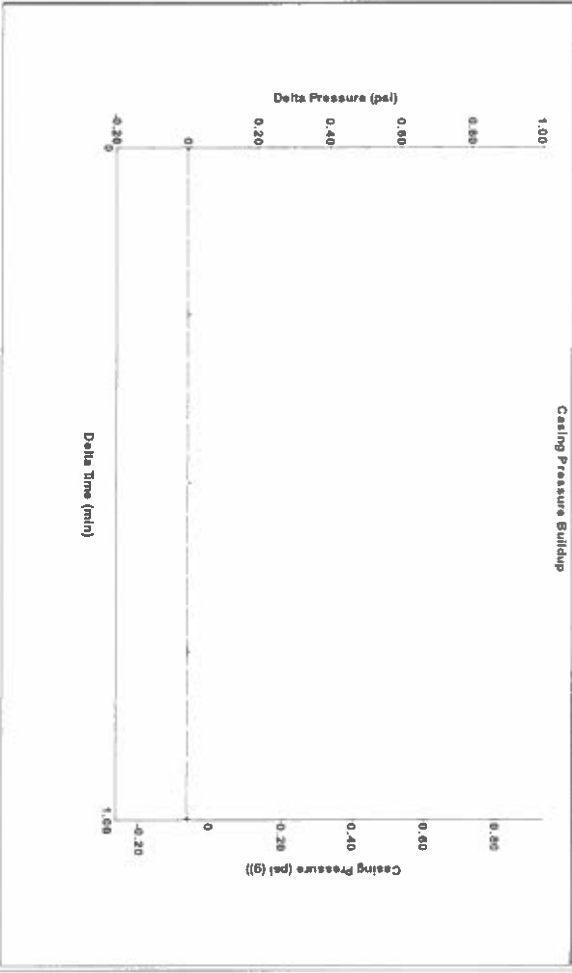
Analysis Method: Automatic

Group: SUBLETTE Well: Unruh B-4 (acquired on: 01/24/24 10:28:35)

Production Current	Potential	Casing Pressure	Producing
Oil -*	-* BB/L/D	-0.1 psi (g)	Annular
Water -*	-* BB/L/D	Casing Pressure Buildup	Gas Flow
Gas -*	-* MscFD	1.00 min	% Liquid
IPR Method	Vogel	Gas/Liquid Interface Pressure	0 MscFD
PBHP/SBHP	0.0	0.9 psi (g)	
Production Efficiency		Liquid Level Depth	
Oil 40 dec API		2599.67 ft	
Water 1.05 Sp Gr: H2O		Pump Intake Depth	
Gas 0.77 Sp Gr: AIR		2968.00 ft	
Acoustic Velocity	1229.74 ft/s	Formation Depth	
		2896.00 ft	
Formation Submergence			
Total Gaseous Liquid Column HIT (TVD)			
Equivalent Gas Free Liquid HIT (TVD)			
1/24/24			

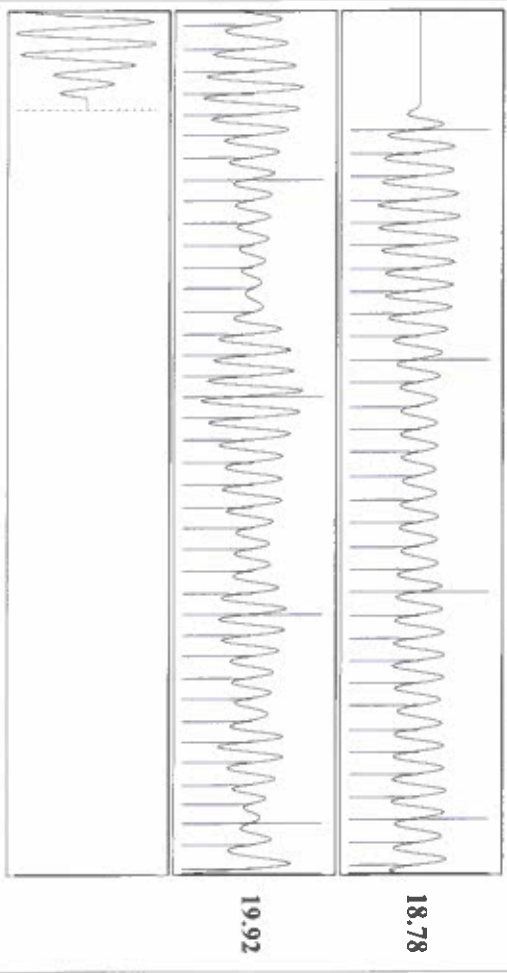


Group: SUBLETTE Well: Unruh B-4 (acquired on: 01/24/24 10:28:35)



Change in Pressure 0.00 psi
 Change in Time 1.00 min
 PT116716
 Range 0 - 2 psi

Group: SUBLETTE Well: Unruh B-4 (acquired on: 01/24/24 10:28:35)



Acoustic Velocity 1229.74 ft/s
 Joints Per Second 19.3966 J/s/Sec
 Depth to liquid level 2599.67 ft
 Automatic Collar Count Yes
 Joints counted 72
 Joints to liquid level 82.0086
 Filter Width 18.0401
 Time to 1st Collar 0.276

Conservation Division
District Office No. 1
210 E. Frontview, Suite A
Dodge City, KS 67801



Phone: 620-682-7933
<http://kcc.ks.gov/>

Andrew J. French, Chairperson
Dwight D. Keen, Commissioner
Annie Kuether, Commissioner

Laura Kelly, Governor

01/26/2024

Katheine McClurkan
Merit Energy Company, LLC
13727 NOEL ROAD, SUITE 1200
DALLAS, TX 75240-7362

Re: Temporary Abandonment
API 15-081-21529-00-00
Unruh B 4
SW/4 Sec.07-29S-33W
Haskell County, Kansas

Dear Katheine McClurkan:

"Your temporary abandonment (TA) application for the well listed above has been approved. In accordance with K.A.R. 82-3-111 the TA status of this well will expire 01/26/2025.

- * If you return this well to service or plug it, please notify the District Office.
- * If you sell this well you are required to file a Transfer of Operator form, T-1.
- * If the well will remain temporarily abandoned, you must submit a new TA application, CP-111, before 01/26/2025.

You may contact me at the number above if you have questions.

Very truly yours,

Michael Maier"