

KANSAS CORPORATION COMMISSION
OIL & GAS CONSERVATION DIVISION

TEMPORARY ABANDONMENT WELL APPLICATION

OPERATOR: License#
Name:
Address 1:
Address 2:
City: State: Zip:
Contact Person:
Phone:
Contact Person Email:
Field Contact Person:
Field Contact Person Phone:

API No. 15-
Spot Description:
Sec. Twp. S. R.
GPS Location: Lat: Long:
Datum: NAD27 NAD83 WGS84
County: Elevation:
Lease Name: Well #:
Well Type: Oil Gas OG WSW Other:
SWD Permit #: ENHR Permit #:
Gas Storage Permit #:
Spud Date: Date Shut-In:

Table with 7 columns: Conductor, Surface, Production, Intermediate, Liner, Tubing. Rows include Size, Setting Depth, Amount of Cement, Top of Cement, Bottom of Cement.

Casing Fluid Level from Surface: How Determined? Date:
Casing Squeeze(s): to w / sacks of cement, to w / sacks of cement. Date:
Do you have a valid Oil & Gas Lease? Yes No
Depth and Type: Junk in Hole at Tools in Hole at Casing Leaks: Yes No Depth of casing leak(s):
Type Completion: ALT. I ALT. II Depth of: DV Tool: w / sacks of cement Port Collar: w / sack of cement
Packer Type: Size: Inch Set at: Feet
Total Depth: Plug Back Depth: Plug Back Method:

Geological Data:

Table with 4 columns: Formation Name, Formation Top, Formation Base, Completion Information. Rows 1 and 2.

UNDER PENALTY OF PERJURY I HEREBY ATTEST THAT THE INFORMATION CONTAINED HEREIN IS TRUE AND CORRECT TO THE BEST OF MY KNOWLEDGE

Submitted Electronically

Form with fields: Do NOT Write in This Space - KCC USE ONLY, Date Tested, Results, Date Plugged, Date Repaired, Date Put Back in Service, Review Completed by, Comments, TA Approved: Yes Denied, Date.

Mail to the Appropriate KCC Conservation Office:

Table with 2 columns: Office Address, Phone. Rows for KCC District Office #1, #2, #3, #4.

General

Well ID 125963
Well BILL 1-4
Company Sandridge
Operator - * -
Lease Name BILL 1-4
Elevation 1237.00 ft
Production Method Other
Dataset Description

Comment

Surface Unit

Manufacturer - * -
Unit Class - * -
Unit API Number - * -
Measured Stroke Length 100.000 in
Rotation CW
Counter Balance Effect (Weights Level) - * - Klb
Weight Of Counter Weights 2000 lb

Prime Mover

Motor Type Electric
Rated HP - * - HP
Run Time 24 hr/day
MFG/Comment - * -

Electric Motor Parameters

Rated Full Load AMPS - * -
Rated Full Load RPM - * -
Synchronous RPM 1200
Voltage - * -
Hertz 60
Phase 3
Power Consumption 5
Power Demand 8 \$/KW

Tubulars

Tubing OD 2.875 in
Casing OD 7.000 in
Average Joint Length 31.700 ft
Anchor Depth - * - ft
Kelly Bushing 18.00 ft

Pump

Plunger Diameter - * - in
Pump Intake Depth 5349.00 ft
**Total Rod Length < Pump Depth

Polished Rod

Polished Rod Diameter - * - in

Rod String

	Top Taper	Taper 2	Taper 3	Taper 4	Taper 5	Taper 6
Rod Type	- * -	- * -	- * -	- * -	- * -	- * -
Rod Length	- * -	- * -	- * -	- * -	- * -	- * - ft
Rod Diameter	- * -	- * -	- * -	- * -	- * -	- * - in
Rod Weight	0.0	0.0	0.0	0.0	0.0	0.0 lb

Total Rod Length 0
Total Rod Weight 0.00

Damp Up 0.05
Damp Down 0.05

Conditions

Pressure

Static BHP 1554.1 psi (g)
Static BHP Method Acoustic
Static BHP Date 07/10/2019

Producing BHP 713.2 psi (g)
Producing BHP Method Acoustic
Producing BHP Date 01/19/2024
Formation Depth 7487.00 ft

Surface Producing Pressures

Tubing Pressure 100.0 psi (g)
Casing Pressure 176.4 psi (g)

Casing Pressure Buildup

Change in Pressure 1.4 psi
Over Change in Time 1.50 min

Production

Oil Production 0 BBL/D
Water Production 1 BBL/D
Gas Production - * - Mscf/D
Production Date 05/08/2017

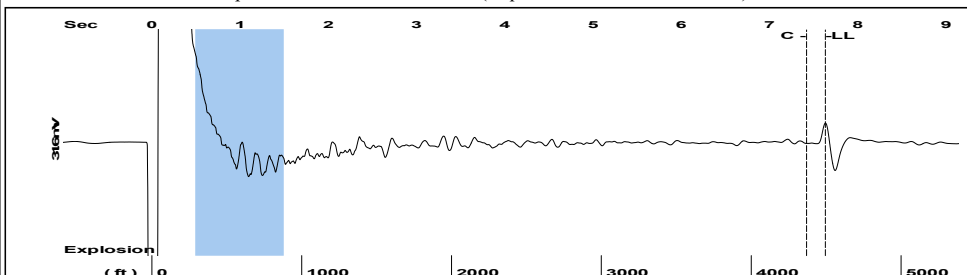
Temperatures

Surface Temperature 70 deg F
Bottomhole Temperature 150 deg F

Fluid Properties

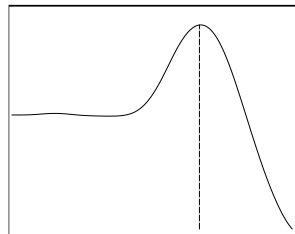
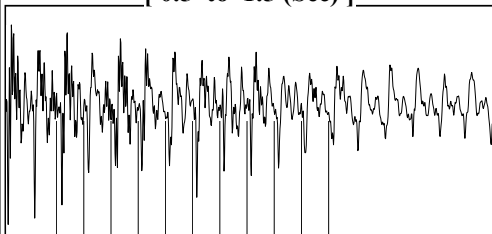
Oil API 40 deg.API
Water Specific Gravity 1.05 Sp.Gr.H2O

Group: Jan 2024 Well: BILL 1-4 (acquired on: 01/19/24 12:06:18)



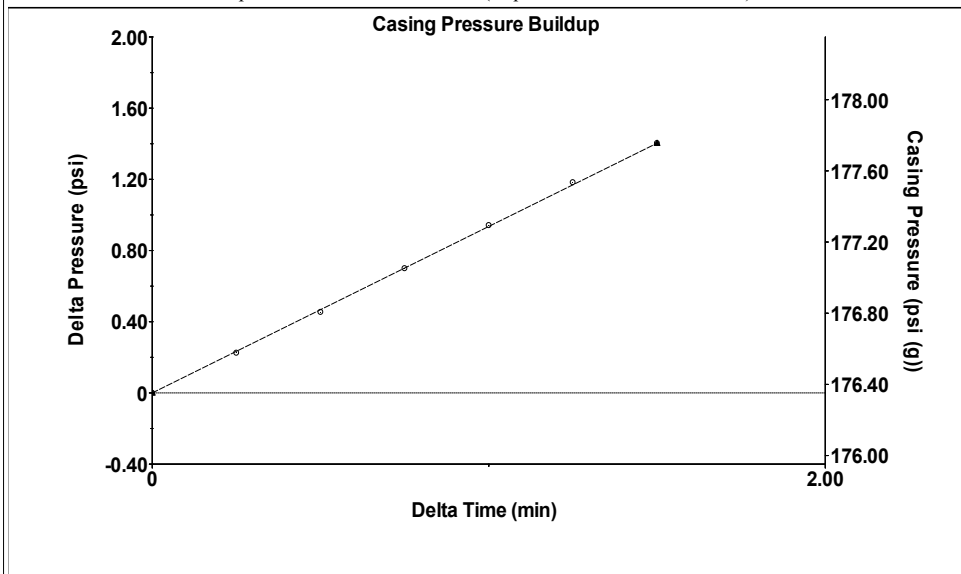
Filter Type High Pass Automatic Collar Count Yes Time 7.633 sec
 Manual Acoustic Veloc 1134.17 ft/s Manual JTS/sec 17.8891 Joints 141.786 Jts
 Depth 4494.62 ft

[0.5 to 1.5 (Sec)]



Analysis Method: Automatic

Group: Jan 2024 Well: BILL 1-4 (acquired on: 01/19/24 12:06:18)



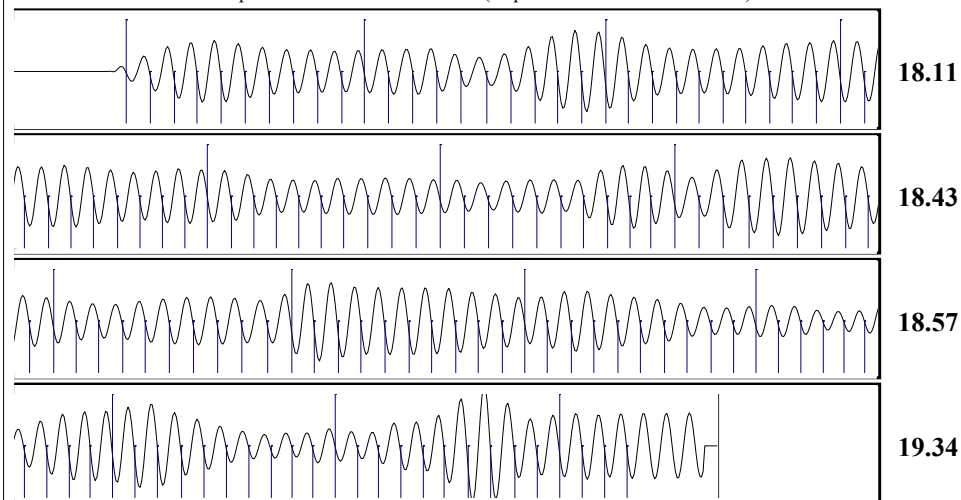
Change in Pressure 1.40 psi PT16722
 Change in Time 1.50 min Range 0 - ? psi

Group: Jan 2024 Well: BILL 1-4 (acquired on: 01/19/24 12:06:18)

Production Current	Potential	Casing Pressure	Static
Oil 0	- * - BBL/D	176.4 psi (g)	Oil Column Height
Water 1	- * - BBL/D	Casing Pressure Buildup	MD 0 ft
Gas - * -	- * - Mscf/D	1.4 psi	
		1.50 min	Water Column Height
IPR Method	Vogel	Gas/Liquid Interface Pressure	MD 2974 ft
PBHP/SBHP	- * -	201.8 psi (g)	
Production Efficiency	0.0	Liquid Level Depth	Static BHP
		4494.62 ft	1554.1 psi (g)
Oil 40 deg.API		Tubing Intake Depth	
Water 1.05 Sp.Gr.H2O		5349.00 ft	
Gas 0.78 Sp.Gr.AIR		Formation Depth	
Acoustic Velocity	1177.68 ft/s	7487.00 ft	

first shot

Group: Jan 2024 Well: BILL 1-4 (acquired on: 01/19/24 12:06:18)



Acoustic Velocity 1177.68 ft/s Joints counted 133
 Joints Per Second 18.5754 jts/sec Joints to liquid level 141.786
 Depth to liquid level 4494.62 ft Filter Width 15.8891 19.8891
 Automatic Collar Count Yes Time to 1st Collar 0.26 7.42

Conservation Division
District Office No. 2
3450 N. Rock Road
Building 600, Suite 601
Wichita, KS 67226



Phone: 316-337-7400
<http://kcc.ks.gov/>

Andrew J. French, Chairperson
Dwight D. Keen, Commissioner
Annie Kuether, Commissioner

Laura Kelly, Governor

01/31/2024

KRISTY JOHNSON
SandRidge Exploration and Production LLC
1 E SHERIDAN AVE STE 500
OKLAHOMA CITY, OK 73104-2494

Re: Temporary Abandonment
API 15-077-21546-00-00
BILL 1-4
NW/4 Sec.04-34S-06W
Harper County, Kansas

Dear KRISTY JOHNSON:

Your application for Temporary Abandonment (TA) for the above-listed well is denied for the following reasons(s):

Shut-in Over 10 years

Pursuant to K.A.R. 82-3-111, the well must be plugged, or returned to service, or obtain temporary abandonment status by 03/01/2024.

This deadline does NOT override any compliance deadline given to you in any Commission Order.

You may contact me if you have any questions.

Sincerely,
David Bollenback
KCC DISTRICT 2