

KANSAS CORPORATION COMMISSION
OIL & GAS CONSERVATION DIVISION

TEMPORARY ABANDONMENT WELL APPLICATION

OPERATOR: License#
Name:
Address 1:
Address 2:
City: State: Zip:
Contact Person:
Phone:
Contact Person Email:
Field Contact Person:
Field Contact Person Phone:

API No. 15-
Spot Description:
Sec. Twp. S. R.
feet from N / S Line of Section
feet from E / W Line of Section
GPS Location: Lat: , Long:
Datum: NAD27 NAD83 WGS84
County: Elevation: GL KB
Lease Name: Well #:
Well Type: (check one) Oil Gas OG WSW Other:
SWD Permit #: ENHR Permit #:
Gas Storage Permit #:
Spud Date: Date Shut-In:

Table with 7 columns: Conductor, Surface, Production, Intermediate, Liner, Tubing. Rows include Size, Setting Depth, Amount of Cement, Top of Cement, Bottom of Cement.

Casing Fluid Level from Surface: How Determined? Date:
Casing Squeeze(s): to w / sacks of cement, to w / sacks of cement. Date:
Do you have a valid Oil & Gas Lease? Yes No
Depth and Type: Junk in Hole at Tools in Hole at Casing Leaks: Yes No Depth of casing leak(s):
Type Completion: ALT. I ALT. II Depth of: DV Tool: w / sacks of cement Port Collar: w / sack of cement
Packer Type: Size: Inch Set at: Feet
Total Depth: Plug Back Depth: Plug Back Method:

Geological Data:

Table with 4 columns: Formation Name, Formation Top, Formation Base, Completion Information. Rows 1 and 2.

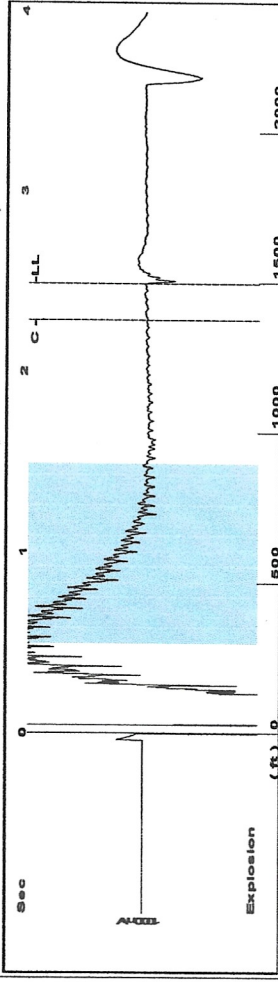
UNDER PENALTY OF PERJURY I HEREBY ATTEST THAT THE INFORMATION CONTAINED HEREIN IS TRUE AND CORRECT TO THE BEST OF MY KNOWLEDGE

Submitted Electronically

Do NOT Write in This Space - KCC USE ONLY
Date Tested: Results: Date Plugged: Date Repaired: Date Put Back in Service:
Review Completed by: Comments:
TA Approved: Yes Denied Date:

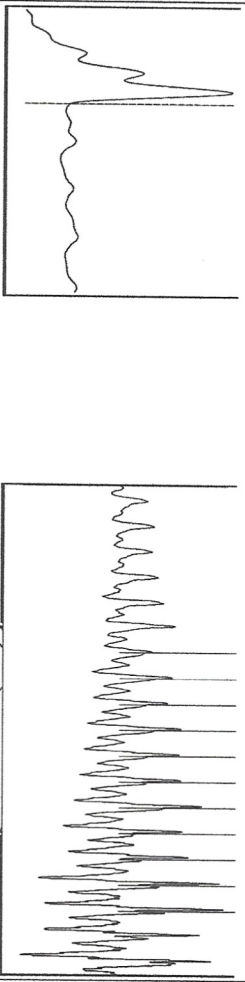
Mail to the Appropriate KCC Conservation Office:

Table with 3 columns: District Office #, Address, Phone. Rows 1-4.



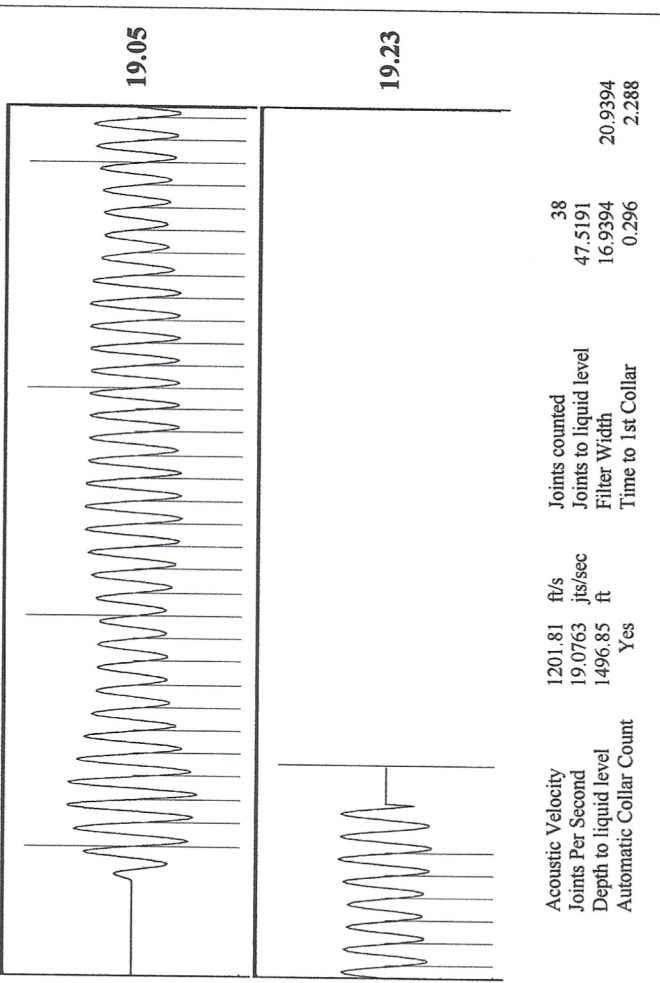
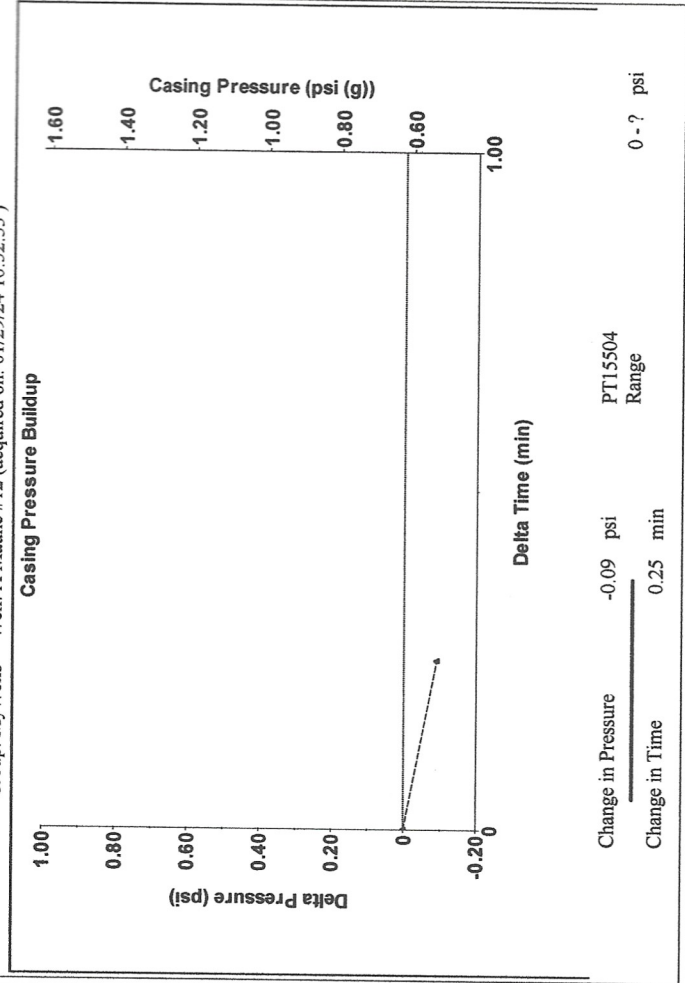
Filter Type High Pass Automatic Collar Count Yes
 Manual Acoustic Veloc 193.18 ft/s Manual JTS/sec 18.9394
 Time 2.491 sec
 Joints 47.5191 Jts
 Depth 1496.85 ft

Analysis Method: Automatic



Change in Pressure -0.09 psi PT15504 Range
 Change in Time 0.25 min

Production	Potential	Casing Pressure	0.6 psi (g)
Current	- * - BBL/D	Casing Pressure Buildup	-0.091 psi
Oil 0	- * - BBL/D	Gas/Liquid Interface Pressure	0.25 min
Water 0	- * - Mscf/D	Liquid Level Depth	1.3 psi (g)
Gas - * -	Vogel	Liquid Level Depth	1496.85 ft
IPR Method	- * -	Pump Intake Depth	4603.00 ft
PBHP/SBHP	0.0	Formation Depth	4158.00 ft
Production Efficiency		Acoustic Velocity	1201.81 ft/s
Oil 40 deg API		Formation Submergence	3106 ft
Water 1.05 Sp.Gr.H2O		Total Gaseous Liquid Column HT (TV D)	3106 ft
Gas 0.78 Sp.Gr.AIR		Equivalent Gas Free Liquid HT (TV D)	



Conservation Division
District Office No. 1
210 E. Frontview, Suite A
Dodge City, KS 67801



Phone: 620-682-7933
<http://kcc.ks.gov/>

Andrew J. French, Chairperson
Dwight D. Keen, Commissioner
Annie Kuether, Commissioner

Laura Kelly, Governor

02/01/2024

Catherine H Stucky
Hartman Oil Co., Inc.
10500 E BERKELEY SQ PKWY STE 100
WICHITA, KS 67206-6816

Re: Temporary Abandonment
API 15-055-20468-00-00
MAUNE A 12
NE/4 Sec.36-21S-34W
Finney County, Kansas

Dear Catherine H Stucky:

"Your temporary abandonment (TA) application for the well listed above has been approved. In accordance with K.A.R. 82-3-111 the TA status of this well will expire 02/01/2025.

- * If you return this well to service or plug it, please notify the District Office.
- * If you sell this well you are required to file a Transfer of Operator form, T-1.
- * If the well will remain temporarily abandoned, you must submit a new TA application, CP-111, before 02/01/2025.

You may contact me at the number above if you have questions.

Very truly yours,

Michael Maier"