

KANSAS CORPORATION COMMISSION
OIL & GAS CONSERVATION DIVISION

Form must be Typed
Form must be signed

TEMPORARY ABANDONMENT WELL APPLICATION

All blanks must be complete

OPERATOR: License#
Name:
Address 1:
Address 2:
City: State: Zip:
Contact Person:
Phone:
Contact Person Email:
Field Contact Person:
Field Contact Person Phone:

API No. 15-
Spot Description:
Sec. Twp. S. R.
GPS Location: Lat: Long:
Datum: NAD27 NAD83 WGS84
County: Elevation:
Lease Name: Well #:
Well Type: Oil Gas OG WSW Other:
SWD Permit #: ENHR Permit #:
Gas Storage Permit #:
Spud Date: Date Shut-In:

Table with 7 columns: Conductor, Surface, Production, Intermediate, Liner, Tubing. Rows include Size, Setting Depth, Amount of Cement, Top of Cement, Bottom of Cement.

Casing Fluid Level from Surface: How Determined? Date:
Casing Squeeze(s): to w / sacks of cement, to w / sacks of cement. Date:
Do you have a valid Oil & Gas Lease? Yes No
Depth and Type: Junk in Hole at Tools in Hole at Casing Leaks: Yes No Depth of casing leak(s):
Type Completion: ALT. I ALT. II Depth of: DV Tool: w / sacks of cement Port Collar: w / sack of cement
Packer Type: Size: Inch Set at: Feet
Total Depth: Plug Back Depth: Plug Back Method:

Geological Date:

Table with 4 columns: Formation Name, Formation Top, Formation Base, Completion Information. Rows 1 and 2.

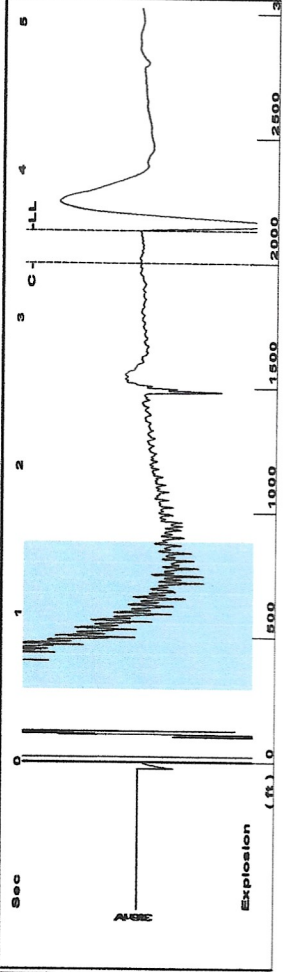
UNDER PENALTY OF PERJURY I HEREBY ATTEST THAT THE INFORMATION CONTAINED HEREIN IS TRUE AND CORRECT TO THE BEST OF MY KNOWLEDGE

Submitted Electronically

Do NOT Write in This Space - KCC USE ONLY
Date Tested: Results: Date Plugged: Date Repaired: Date Put Back in Service:
Review Completed by: Comments:
TA Approved: Yes Denied Date:

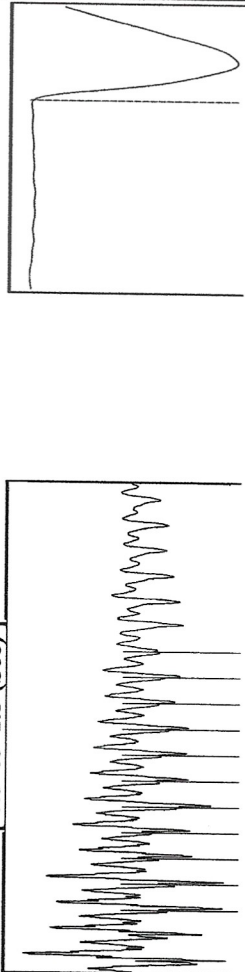
Mail to the Appropriate KCC Conservation Office:

Table with 3 columns: District Office, Address, Phone. Rows for District Office #1, #2, #3, #4.



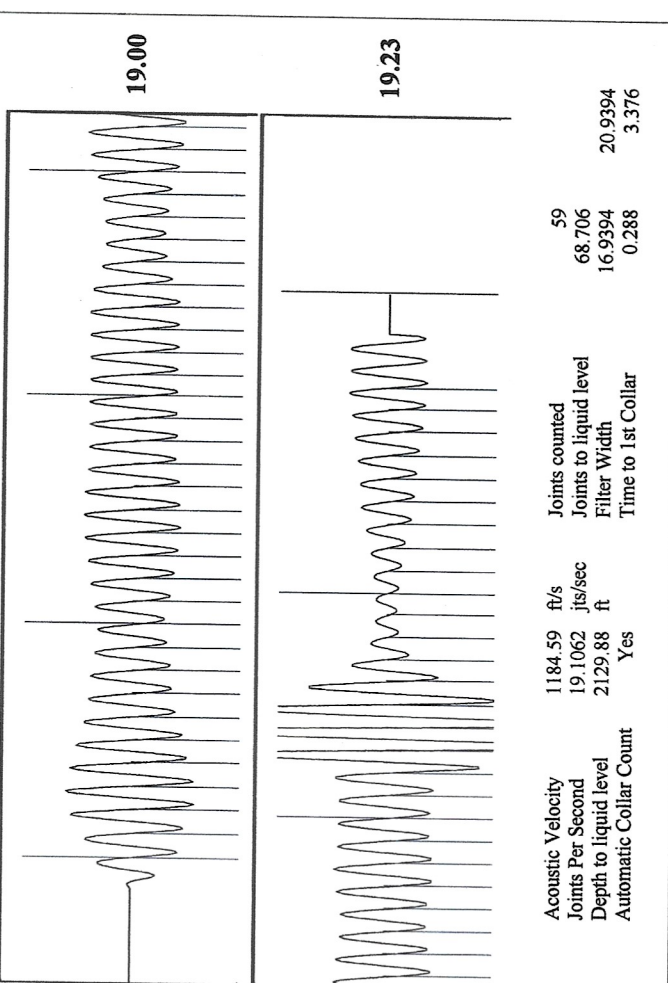
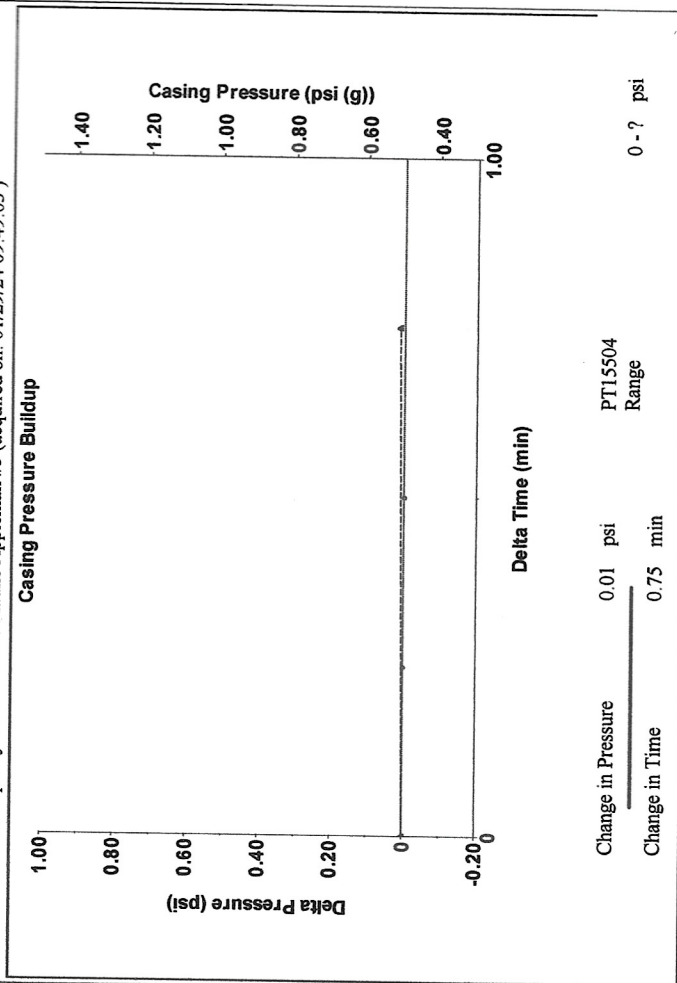
Filter Type High Pass Automatic Collar Count Yes
Manual Acoustic Veloc 174.24 ft/s Manual JTS/sec 18.9394

[0.5 to 1.5 (Sec)]



Analysis Method: Automatic

Production	Potential	Casing Pressure	Producing
Oil 0	- * - BBL/D	0.5 psi (g)	Annular
Water 0	- * - BBL/D	0.013 psi	Gas Flow 0 Mscf/D
Gas - * -	- * - Mscf/D	0.75 min	% Liquid 100 %
IPR Method	Vogel	Gas/Liquid Interface Pressure	Pump Intake
PBHP/SBHP	- * -	1.4 psi (g)	1131.3 psi (g)
Production Efficiency	0.0	Liquid Level Depth	Producing BHP
Oil 40 deg-API		2129.88 ft	869.4 psi (g)
Water 1.05 Sp.Gr.H2O		Pump Intake Depth	Static BHP
Gas 0.80 Sp.Gr.AIR		461.500 ft	- * - psi (g)
Acoustic Velocity	1184.59 ft/s	Formation Depth	
		4039.00 ft	
Formation Submergence			
Total Gaseous Liquid Column HT (TVD)	2485 ft		
Equivalent Gas Free Liquid HT (TVD)	2485 ft		
Acoustic Test			



Conservation Division
District Office No. 1
210 E. Frontview, Suite A
Dodge City, KS 67801



Phone: 620-682-7933
<http://kcc.ks.gov/>

Andrew J. French, Chairperson
Dwight D. Keen, Commissioner
Annie Kuether, Commissioner

Laura Kelly, Governor

02/01/2024

Catherine H Stucky
Hartman Oil Co., Inc.
10500 E BERKELEY SQ PKWY STE 100
WICHITA, KS 67206-6816

Re: Temporary Abandonment
API 15-055-30006-00-00
MAUNE-APPLEMAN 5
NW/4 Sec.31-21S-33W
Finney County, Kansas

Dear Catherine H Stucky:

"Your temporary abandonment (TA) application for the well listed above has been approved. In accordance with K.A.R. 82-3-111 the TA status of this well will expire 02/01/2025.

- * If you return this well to service or plug it, please notify the District Office.
- * If you sell this well you are required to file a Transfer of Operator form, T-1.
- * If the well will remain temporarily abandoned, you must submit a new TA application, CP-111, before 02/01/2025.

You may contact me at the number above if you have questions.

Very truly yours,

Michael Maier"