

KANSAS CORPORATION COMMISSION
OIL & GAS CONSERVATION DIVISION

TEMPORARY ABANDONMENT WELL APPLICATION

OPERATOR: License# _____
 Name: _____
 Address 1: _____
 Address 2: _____
 City: _____ State: _____ Zip: _____ + _____
 Contact Person: _____
 Phone: (_____) _____
 Contact Person Email: _____
 Field Contact Person: _____
 Field Contact Person Phone: (_____) _____

API No. 15- _____
 Spot Description: _____
 _____ - _____ - _____ - _____ Sec. _____ Twp. _____ S. R. _____ E W
 _____ feet from N / S Line of Section
 _____ feet from E / W Line of Section
 GPS Location: Lat: _____, Long: _____
(e.g. xx.xxxxx) (e.g. -xxx.xxxxx)
 Datum: NAD27 NAD83 WGS84
 County: _____ Elevation: _____ GL KB
 Lease Name: _____ Well #: _____
 Well Type: (check one) Oil Gas OG WSW Other: _____
 SWD Permit #: _____ ENHR Permit #: _____
 Gas Storage Permit #: _____
 Spud Date: _____ Date Shut-In: _____

	Conductor	Surface	Production	Intermediate	Liner	Tubing
Size						
Setting Depth						
Amount of Cement						
Top of Cement						
Bottom of Cement						

Casing Fluid Level from Surface: _____ How Determined? _____ Date: _____
 Casing Squeeze(s): _____ to _____ w / _____ sacks of cement, _____ to _____ w / _____ sacks of cement. Date: _____
(top) (bottom) (top) (bottom)
 Do you have a valid Oil & Gas Lease? Yes No
 Depth and Type: Junk in Hole at _____ Tools in Hole at _____ Casing Leaks: Yes No Depth of casing leak(s): _____
(depth) (depth)
 Type Completion: ALT. I ALT. II Depth of: DV Tool: _____ w / _____ sacks of cement Port Collar: _____ w / _____ sack of cement
(depth) (depth)
 Packer Type: _____ Size: _____ Inch Set at: _____ Feet
 Total Depth: _____ Plug Back Depth: _____ Plug Back Method: _____

Geological Data:

Formation Name	Formation Top	Formation Base	Completion Information
1. _____	At: _____	to _____ Feet	Perforation Interval _____ to _____ Feet or Open Hole Interval _____ to _____ Feet
2. _____	At: _____	to _____ Feet	Perforation Interval _____ to _____ Feet or Open Hole Interval _____ to _____ Feet

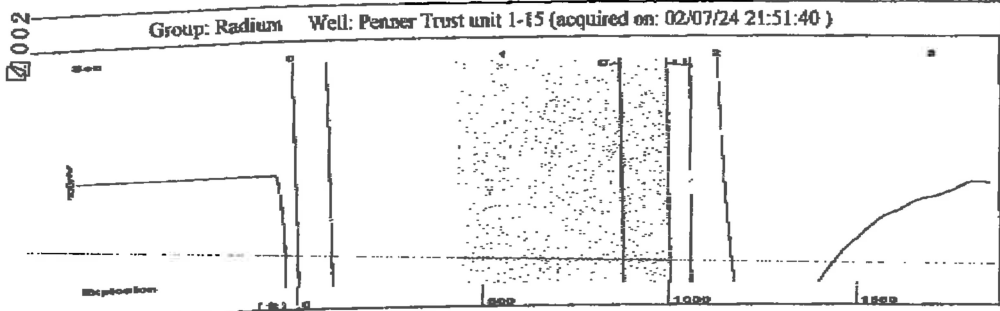
UNDER PENALTY OF PERJURY I HEREBY ATTEST THAT THE INFORMATION CONTAINED HEREIN IS TRUE AND CORRECT TO THE BEST OF MY KNOWLEDGE

Submitted Electronically

Do NOT Write in This Space - KCC USE ONLY	Date Tested: _____	Results: _____	Date Plugged: _____	Date Repaired: _____	Date Put Back in Service: _____
	Review Completed by: _____ Comments: _____				
TA Approved: <input type="checkbox"/> Yes <input type="checkbox"/> Denied Date: _____					

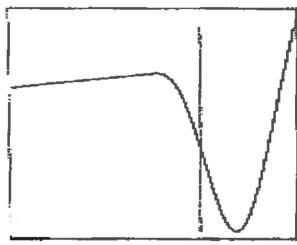
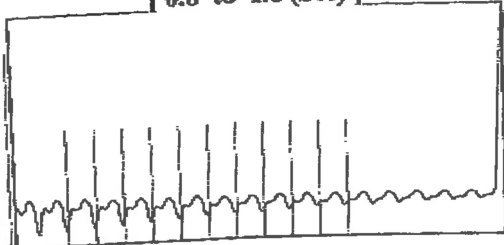
Mail to the Appropriate KCC Conservation Office:

	KCC District Office #1 - 210 E. Frontview, Suite A, Dodge City, KS 67801	Phone 620.682.7933
	KCC District Office #2 - 3450 N. Rock Road, Building 600, Suite 601, Wichita, KS 67226	Phone 316.337.7400
	KCC District Office #3 - 137 E. 21st St., Chanute, KS 66720	Phone 620.902.6450
	KCC District Office #4 - 2301 E. 13th Street, Hays, KS 67601-2651	Phone 785.261.6250

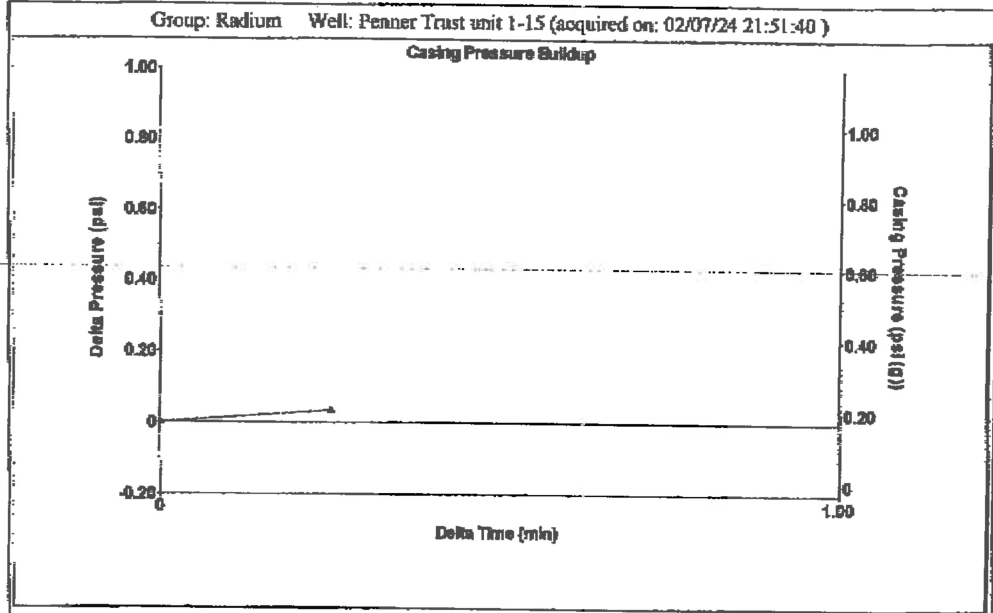


Filter Type High Pass Automatic Collar Count Yes Time 1.772 sec
 Manual Acoustic Velocity 142.46 ft/s Manual JTS/sec 17.5439 Joints 30.8711 Jts
 Depth 1005.16 ft

| 0.8 to 1.8 (Sec) |



Analysis Method: Automatic



Change in Pressure 0.03 psi PT13440
 Change in Time 0.25 min Range 0-? psi

ELLINWOOD

02/17/2021 21:41 FAX 16205642062

Group: Radium Well: Penner Trust unit 1-15 (acquired on: 02/07/24 21:51:40)

Production Current	Potential	Casing Pressure	Producing
Oil +- BBL/D	+- BBL/D	0.2 psi (g)	Annular Gas Flow
Water +- BBL/D	+- BBL/D	Casing Pressure Buildup	1 Mscf/D
Gas +- Mscf/D	+- Mscf/D	0.0 psi	% Liquid
		0.25 min	94 %
IPR Method Vogel	Gas/Liquid Interface Pressure	0.6 psi (g)	
PBHP/SBHP	Liquid Level Depth		
Production Efficiency 0.0	1005.16 ft		
Oil 40 deg API	Pump Intake Depth		
Water 1.05 Sp.Gr.H2O	3777.00 ft		
Gas 0.84 Sp.Gr.AIR	Formation Depth		
Acoustic Velocity 1134.49 ft/s	3758.00 ft		
Formation Submergence	2772 ft	Pump Intake	864.7 psi (g)
Total Gaseous Liquid Column HT (TVD)	2606 ft	Producing BHP	858.8 psi (g)
Equivalent Gas Free Liquid HT (TVD)		Static BHP	+- psi (g)
Acoustic Test			

Group: Radium Well: Penner Trust unit 1-15 (acquired on: 02/07/24 21:51:40)

17.42

Acoustic Velocity	1134.49 ft/s	Joints counted	20
Joints Per Second	17.4216 jts/sec	Joints to liquid level	30.8711
Depth to liquid level	1005.16 ft	Filter Width	15.5439 19.5439
Automatic Collar Count	Yes	Time to 1st Collar	0.4 1.548

02/08/2024

Loveness Mpanje
F. G. Holl Company L.L.C.
9431 E CENTRAL STE 100
WICHITA, KS 67206-2563

Re: Temporary Abandonment
API 15-009-25729-00-01
PENNER TRUST UNIT 1-15
E/2 Sec.15-20S-15W
Barton County, Kansas

Dear Loveness Mpanje:

"Your temporary abandonment (TA) application for the well listed above has been approved. In accordance with K.A.R. 82-3-111 the TA status of this well will expire 02/08/2025.

- * If you return this well to service or plug it, please notify the District Office.
- * If you sell this well you are required to file a Transfer of Operator form, T-1.
- * If the well will remain temporarily abandoned, you must submit a new TA application, CP-111, before 02/08/2025.

You may contact me at the number above if you have questions.

Very truly yours,

RICHARD WILLIAMS"