

KANSAS CORPORATION COMMISSION
OIL & GAS CONSERVATION DIVISION

Form must be Typed
Form must be signed

TEMPORARY ABANDONMENT WELL APPLICATION

All blanks must be complete

OPERATOR: License#
Name:
Address 1:
Address 2:
City: State: Zip:
Contact Person:
Phone:
Contact Person Email:
Field Contact Person:
Field Contact Person Phone:

API No. 15-
Spot Description:
Sec. Twp. S. R.
GPS Location: Lat: Long:
Datum: NAD27 NAD83 WGS84
County: Elevation:
Lease Name: Well #:
Well Type: Oil Gas OG WSW Other:
SWD Permit #: ENHR Permit #:
Gas Storage Permit #:
Spud Date: Date Shut-In:

Table with 7 columns: Conductor, Surface, Production, Intermediate, Liner, Tubing. Rows include Size, Setting Depth, Amount of Cement, Top of Cement, Bottom of Cement.

Casing Fluid Level from Surface: How Determined? Date:
Casing Squeeze(s): to w / sacks of cement, to w / sacks of cement. Date:
Do you have a valid Oil & Gas Lease? Yes No
Depth and Type: Junk in Hole at Tools in Hole at Casing Leaks: Yes No Depth of casing leak(s):
Type Completion: ALT. I ALT. II Depth of: DV Tool: w / sacks of cement Port Collar: w / sack of cement
Packer Type: Size: Inch Set at: Feet
Total Depth: Plug Back Depth: Plug Back Method:

Geological Data:

Table with 4 columns: Formation Name, Formation Top, Formation Base, Completion Information. Rows 1 and 2.

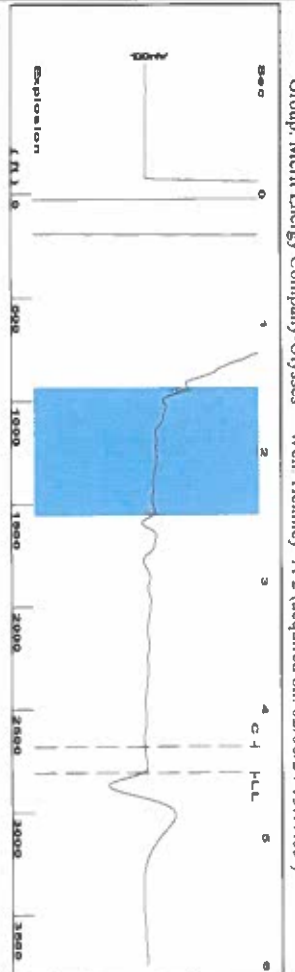
UNDER PENALTY OF PERJURY I HEREBY ATTEST THAT THE INFORMATION CONTAINED HEREIN IS TRUE AND CORRECT TO THE BEST OF MY KNOWLEDGE

Submitted Electronically

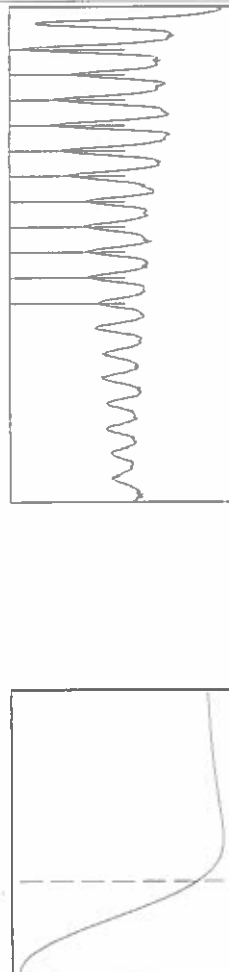
Do NOT Write in This Space - KCC USE ONLY
Date Tested: Results: Date Plugged: Date Repaired: Date Put Back in Service:
Review Completed by: Comments:
TA Approved: Yes Denied Date:

Mail to the Appropriate KCC Conservation Office:

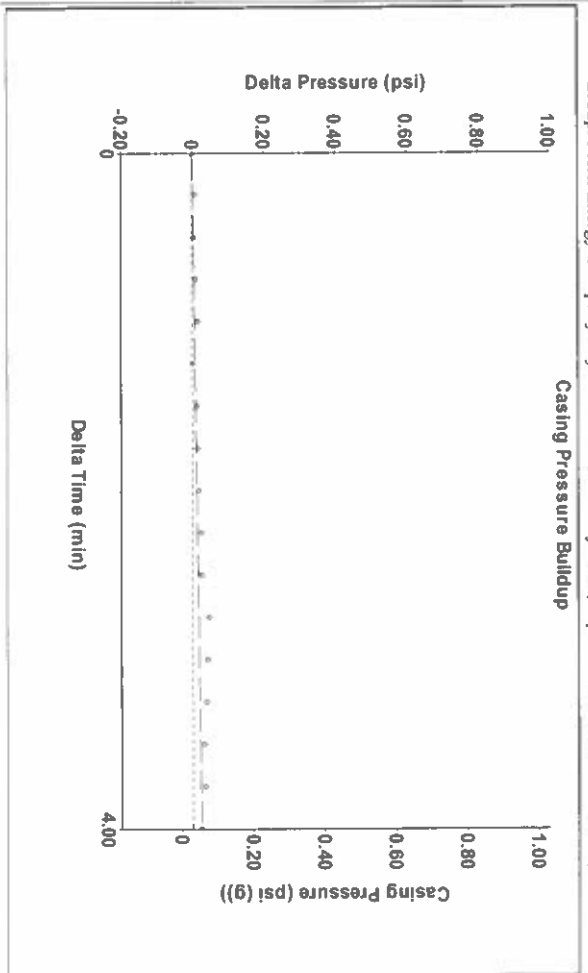
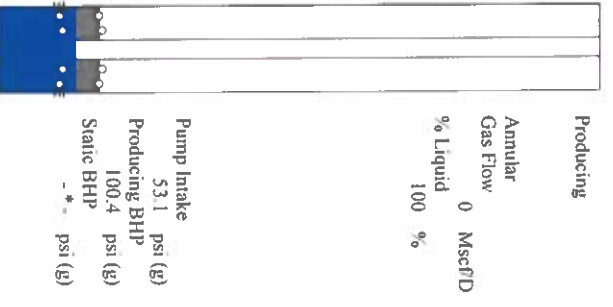
Table with 3 columns: District Office, Address, Phone. Rows for District Office #1, #2, #3, #4.



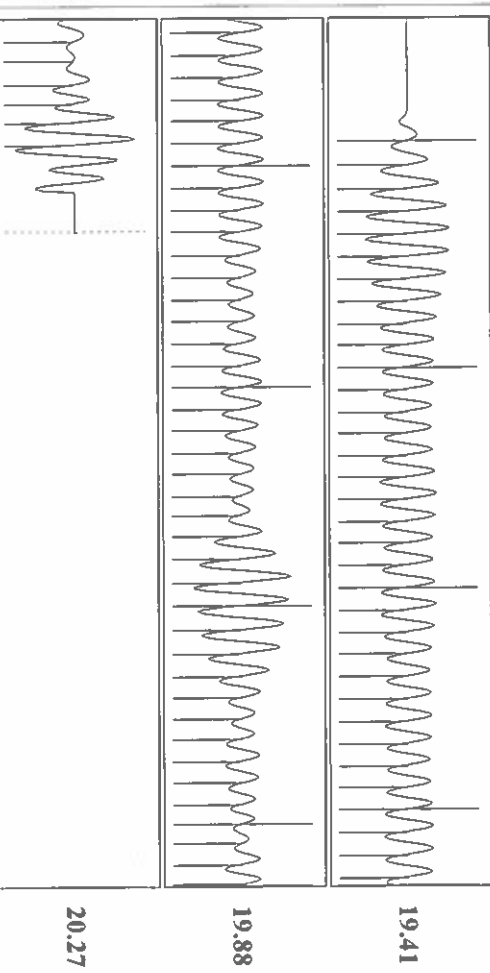
Filter Type High Pass Automatic Collar Count Yes  
 Manual Acoustic Velo 1238.28 R/S Manual JTS/sec 19.5312  
 Time 4.494 sec  
 Joints 88.5793 J/s  
 Depth 2807.97 ft



Production	Potential	Casing Pressure	Producing
Current	BB/L/D	0.0 psi (g)	Annular
Oil	BB/L/D	Casing Pressure Buildup	Gas Flow
Water	BB/L/D	0.0 psi	% Liquid
Gas	Misc/D	4.00 min	0 Misc/D
IPR Method	Vogel	Gas/Liquid Interface Pressure	
PBHP/SBHP	0.0	1.1 psi (g)	
Production Efficiency		Liquid Level Depth	
		2807.97 ft	
Oil 40 deg API		Pump Intake Depth	
Water 1.05 Sp.Gr./H2O		2961.00 ft	
Gas 0.75 Sp.Gr./AIR		Formation Depth	
		3065.00 ft	
Acoustic Velocity	1249.65 ft/s		
Formation Submergence			
Total Gaseous Liquid Column HT (TVVD)	153 ft		
Equivalent Gas Free Liquid HT (TVVD)	153 ft		
2/6/24			



Change in Pressure 0.02 psi PT18788  
 Change in Time 4.00 min Range 0 - ? psi



Acoustic Velocity	1249.65 ft/s	Joints counted	79
Joints Per Second	19.7106 jts/sec	Joints to liquid level	88.5793
Depth to liquid level	2807.97 ft	Filter Width	17.5312
Automatic Collar Count	Yes	Time to 1st Collar	0.284
			4.292

02/13/2024

Katherine McClurkan  
Merit Energy Company, LLC  
13727 Noel Road, Suite 1200  
Dallas, TX 75240-7362

Re: Temporary Abandonment  
API 15-067-20405-00-00  
Helmley A 2  
NE/4 Sec.25-28S-36W  
Grant County, Kansas

Dear Katherine McClurkan:

"Your temporary abandonment (TA) application for the well listed above has been approved. In accordance with K.A.R. 82-3-111 the TA status of this well will expire 02/13/2025.

- \* If you return this well to service or plug it, please notify the District Office.
- \* If you sell this well you are required to file a Transfer of Operator form, T-1.
- \* If the well will remain temporarily abandoned, you must submit a new TA application, CP-111, before 02/13/2025.

You may contact me at the number above if you have questions.

Very truly yours,

Michael Maier"