

KANSAS CORPORATION COMMISSION
OIL & GAS CONSERVATION DIVISION

TEMPORARY ABANDONMENT WELL APPLICATION

OPERATOR: License#
Name:
Address 1:
Address 2:
City: State: Zip:
Contact Person:
Phone:
Contact Person Email:
Field Contact Person:
Field Contact Person Phone:

API No. 15-
Spot Description:
Sec. Twp. S. R.
GPS Location: Lat: Long:
Datum: NAD27 NAD83 WGS84
County: Elevation:
Lease Name: Well #:
Well Type: Oil Gas OG WSW Other:
SWD Permit #: ENHR Permit #:
Gas Storage Permit #:
Spud Date: Date Shut-In:

Table with 7 columns: Conductor, Surface, Production, Intermediate, Liner, Tubing. Rows include Size, Setting Depth, Amount of Cement, Top of Cement, Bottom of Cement.

Casing Fluid Level from Surface: How Determined? Date:
Casing Squeeze(s): to w / sacks of cement, to w / sacks of cement. Date:
Do you have a valid Oil & Gas Lease? Yes No
Depth and Type: Junk in Hole at Tools in Hole at Casing Leaks: Yes No Depth of casing leak(s):
Type Completion: ALT. I ALT. II Depth of: DV Tool: w / sacks of cement Port Collar: w / sack of cement
Packer Type: Size: Inch Set at: Feet
Total Depth: Plug Back Depth: Plug Back Method:

Geological Data:

Table with 4 columns: Formation Name, Formation Top, Formation Base, Completion Information. Rows 1 and 2.

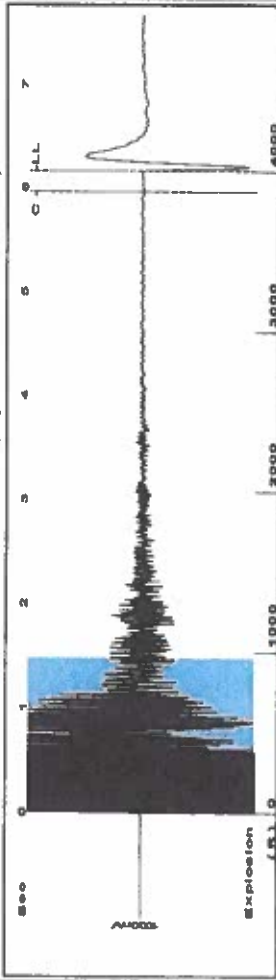
UNDER PENALTY OF PERJURY I HEREBY ATTEST THAT THE INFORMATION CONTAINED HEREIN IS TRUE AND CORRECT TO THE BEST OF MY KNOWLEDGE

Submitted Electronically

Do NOT Write in This Space - KCC USE ONLY
Date Tested: Results: Date Plugged: Date Repaired: Date Put Back in Service:
Review Completed by: Comments:
TA Approved: Yes Denied Date:

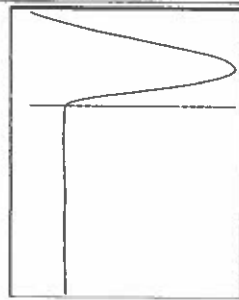
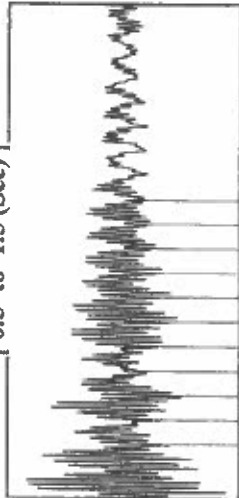
Mail to the Appropriate KCC Conservation Office:

Map of Kansas with 4 numbered districts. Table with 2 columns: Office Address, Phone Number. Rows 1-4.



Filter Type High Pass Automatic Collar Count Yes
 Manual Acoustic Veloc 1283.4 ft/s Manual JTS/sec 20.2429
 Time 6.162 sec
 Joints 126.306 Jts
 Depth 4003.90 ft

[0.5 to 1.5 (Sec)]

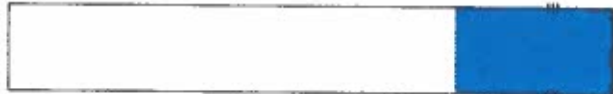


NO PRESSURE DATA AVAILABLE

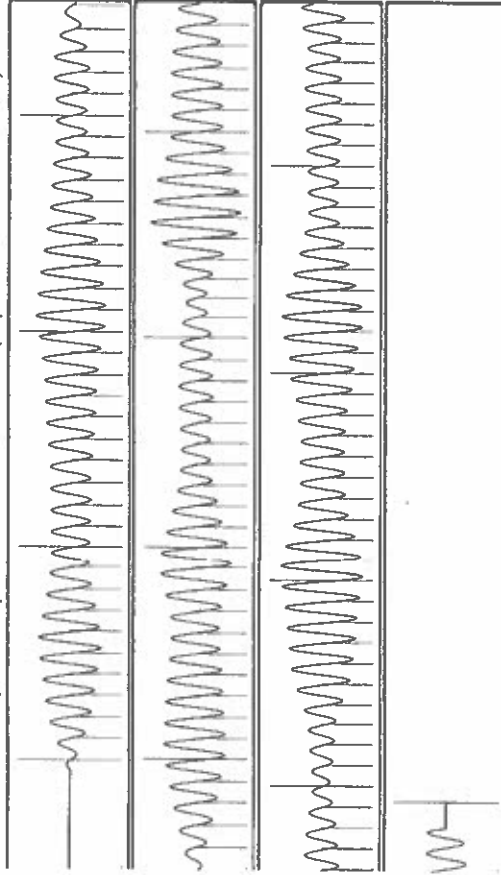
Change in Pressure 0.00 psi PT8496 Range
 Change in Time 0.00 min 0 - 7 psi

Analysis Method: Automatic

Production	Potential	Casing Pressure	Static
Oil - * - BBL/D	0.2 psi (g)	Oil Column Height	MD 0 ft
Water - * - BBL/D	0.017 psi	Water Column Height	MD - * - ft
Gas - * - Mscf/D	0.25 min	Static BHP	- * - psi (g)
IPR Method Vogel	- * - psi (g)		
PBHP/SBHP	0.0		
Production Efficiency			
Oil 40 deg-API			
Water 1.05 Sp.Gr-H2O			
Gas 0.70 Sp.Gr-AIR			
Acoustic Velocity 1299.54 ft/s			



Acoustic Test



Acoustic Velocity 1299.54 ft/s Joints counted 117
 Joints Per Second 20.4975 Jts/sec 126.306
 Depth to liquid level 4003.9 ft Filter Width 18.2429
 Automatic Collar Count Yes Time to 1st Collar 22.2429 5.96

Conservation Division
District Office No. 1
210 E. Frontview, Suite A
Dodge City, KS 67801



Phone: 620-682-7933
<http://kcc.ks.gov/>

Andrew J. French, Chairperson
Dwight D. Keen, Commissioner
Annie Kuether, Commissioner

Laura Kelly, Governor

02/22/2024

Curtis Clark
Clark, Curtis dba Clark Exploration Co.
120 S CLERMONT ST
DENVER, CO 80246-1037

Re: Temporary Abandonment
API 15-007-20010-00-00
BALLET RANCH 8
SE/4 Sec.31-34S-15W
Barber County, Kansas

Dear Curtis Clark:

"Your temporary abandonment (TA) application for the well listed above has been approved. In accordance with K.A.R. 82-3-111 the TA status of this well will expire 02/22/2025.

- * If you return this well to service or plug it, please notify the District Office.
- * If you sell this well you are required to file a Transfer of Operator form, T-1.
- * If the well will remain temporarily abandoned, you must submit a new TA application, CP-111, before 02/22/2025.

You may contact me at the number above if you have questions.

Very truly yours,

Michael Maier"