

KANSAS CORPORATION COMMISSION
OIL & GAS CONSERVATION DIVISION

TEMPORARY ABANDONMENT WELL APPLICATION

OPERATOR: License#
Name:
Address 1:
Address 2:
City: State: Zip:
Contact Person:
Phone:
Contact Person Email:
Field Contact Person:
Field Contact Person Phone:

API No. 15-
Spot Description:
Sec. Twp. S. R.
GPS Location: Lat: Long:
Datum: NAD27 NAD83 WGS84
County: Elevation:
Lease Name: Well #:
Well Type: Oil Gas OG WSW Other:
SWD Permit #: ENHR Permit #:
Gas Storage Permit #:
Spud Date: Date Shut-In:

Table with 7 columns: Conductor, Surface, Production, Intermediate, Liner, Tubing. Rows include Size, Setting Depth, Amount of Cement, Top of Cement, Bottom of Cement.

Casing Fluid Level from Surface: How Determined? Date:
Casing Squeeze(s): to w / sacks of cement, to w / sacks of cement. Date:
Do you have a valid Oil & Gas Lease? Yes No
Depth and Type: Junk in Hole at Tools in Hole at Casing Leaks: Yes No Depth of casing leak(s):
Type Completion: ALT. I ALT. II Depth of: DV Tool: w / sacks of cement Port Collar: w / sack of cement
Packer Type: Size: Inch Set at: Feet
Total Depth: Plug Back Depth: Plug Back Method:

Geological Data:

Table with 4 columns: Formation Name, Formation Top, Formation Base, Completion Information. Rows 1 and 2.

UNDER PENALTY OF PERJURY I HEREBY ATTEST THAT THE INFORMATION CONTAINED HEREIN IS TRUE AND CORRECT TO THE BEST OF MY KNOWLEDGE

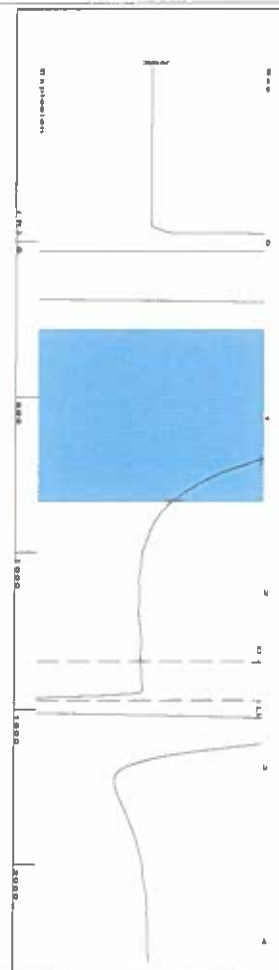
Submitted Electronically

Form with fields: Do NOT Write in This Space - KCC USE ONLY, Date Tested, Results, Date Plugged, Date Repaired, Date Put Back in Service, Review Completed by, Comments, TA Approved: Yes Denied, Date.

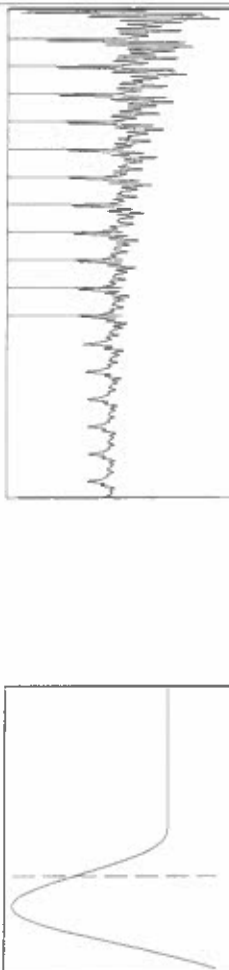
Mail to the Appropriate KCC Conservation Office:

Table with 3 columns: District Office #, Address, Phone. Rows 1-4.

Group: Ulysses East Well: Moody E-1 (acquired on: 02/22/24 14:02:57)



Filter Type High Pass Automatic Collar Count Yes
 Manual Acoustic Velocity 1116.2 ft/s Manual JTS/sec 17.6056
 Time 2.625 sec
 Joints 46.5252 J/s
 Depth 1474.85 ft



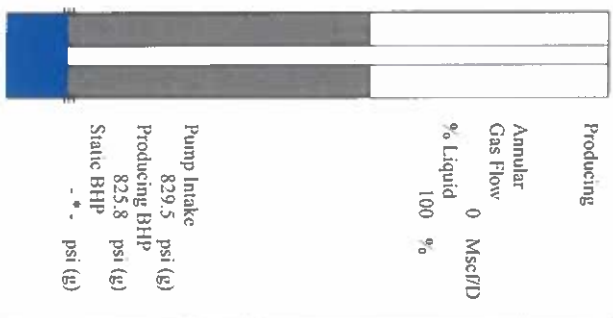
Group: Ulysses East Well: Moody E-1 (acquired on: 02/22/24 14:02:57)



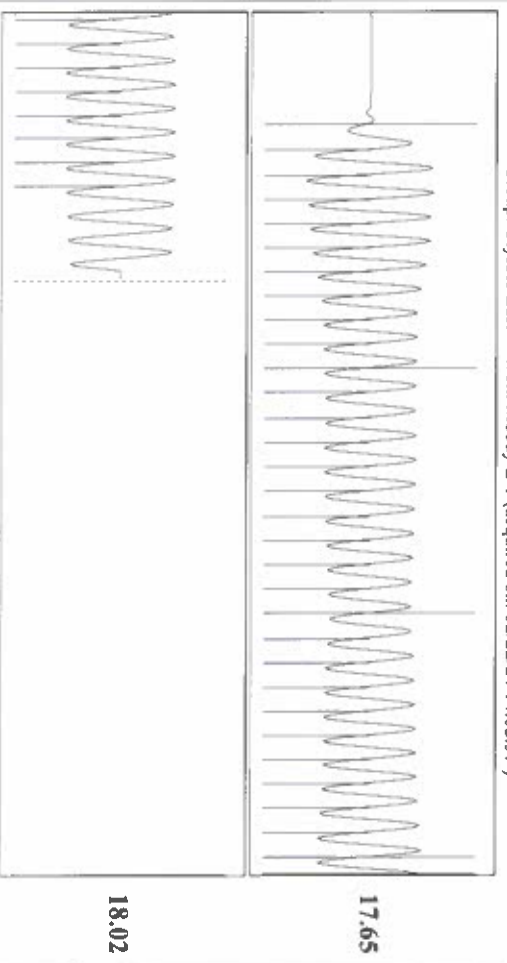
Change in Pressure -0.08 psi PT 14679
 Change in Time 2.00 min Range 0 - 2 psi

Group: Ulysses East Well: Moody E-1 (acquired on: 02/22/24 14:02:57)

Production Current	Potential	Casing Pressure	Producing
Oil -*-	-*- BB/L/D	-0.5 psi (g)	Annular Gas Flow 0 Mscf/D
Water -*-	-*- BB/L/D	Casing Pressure Buildup -0.082 psi	% Liquid 100 %
Gas -*-	-*- Mscf/D	2.00 min	
IPR Method PBHP/SBHP	Vogel -*-	Gas/Liquid Interface Pressure 0.2 psi (g)	
Production Efficiency 0.0		Liquid Level Depth 1474.85 ft	
Oil 40 deg API		Pump Intake Depth 3975.00 ft	
Water 1.05 Sp.Gr. H2O		Formation Depth 3963.00 ft	
Gas 0.85 Sp.Gr. AIR			
Acoustic Velocity 1123.69 ft/s			
Formation Submergence			
Total Gaseous Liquid Column HIT (TTVD) 2500 ft			
Equivalent Gas Free Liquid HIT (TTVD) 2500 ft			
2/22/24			



Group: Ulysses East Well: Moody E-1 (acquired on: 02/22/24 14:02:57)



Acoustic Velocity 1123.69 ft/s Joints counted 38
 Joints Per Second 17.7239 J/s/sec Joints to liquid level 46.5252
 Depth to liquid level 1474.85 ft Filter Width 15.6056
 Automatic Collar Count Yes Time to 1st Collar 0.26 2.404

Conservation Division
District Office No. 1
210 E. Frontview, Suite A
Dodge City, KS 67801



Phone: 620-682-7933
<http://kcc.ks.gov/>

Andrew J. French, Chairperson
Dwight D. Keen, Commissioner
Annie Kuether, Commissioner

Laura Kelly, Governor

02/26/2024

Katherine McClurkan
Merit Energy Company, LLC
13727 Noel Road, Suite 1200
Dallas, TX 75240

Re: Temporary Abandonment
API 15-081-21993-00-00
Moody E 1
NW/4 Sec.14-27S-34W
Haskell County, Kansas

Dear Katherine McClurkan:

Your application for Temporary Abandonment (TA) for the above-listed well is denied for the following reasons(s):

Shut-in Over 10 years

Pursuant to K.A.R. 82-3-111, the well must be plugged, or returned to service, or obtain temporary abandonment status by 03/27/2024.

This deadline does NOT override any compliance deadline given to you in any Commission Order.

You may contact me if you have any questions.

Sincerely,
Michael Maier
KCC DISTRICT 1