

KANSAS CORPORATION COMMISSION
OIL & GAS CONSERVATION DIVISION

TEMPORARY ABANDONMENT WELL APPLICATION

All blanks must be complete

OPERATOR: License# _____
Name: _____
Address 1: _____
Address 2: _____
City: _____ State: _____ Zip: _____ + _____
Contact Person: _____
Phone: (_____) _____
Contact Person Email: _____
Field Contact Person: _____
Field Contact Person Phone: (_____) _____

API No. 15- _____
Spot Description: _____
____ - ____ - ____ - ____ Sec. _____ Twp. _____ S. R. _____ E W
_____ feet from N / S Line of Section
_____ feet from E / W Line of Section
GPS Location: Lat: _____, Long: _____
(e.g. xx.xxxxx) (e.g. -xxx.xxxxx)
Datum: NAD27 NAD83 WGS84
County: _____ Elevation: _____ GL KB
Lease Name: _____ Well #: _____
Well Type: (check one) Oil Gas OG WSW Other: _____
 SWD Permit #: _____ ENHR Permit #: _____
 Gas Storage Permit #: _____
Spud Date: _____ Date Shut-In: _____

	Conductor	Surface	Production	Intermediate	Liner	Tubing
Size						
Setting Depth						
Amount of Cement						
Top of Cement						
Bottom of Cement						

Casing Fluid Level from Surface: _____ How Determined? _____ Date: _____
Casing Squeeze(s): _____ to _____ w / _____ sacks of cement, _____ to _____ w / _____ sacks of cement. Date: _____
(top) (bottom) (top) (bottom)
Do you have a valid Oil & Gas Lease? Yes No
Depth and Type: Junk in Hole at _____ Tools in Hole at _____ Casing Leaks: Yes No Depth of casing leak(s): _____
(depth) (depth)
Type Completion: ALT. I ALT. II Depth of: DV Tool: _____ w / _____ sacks of cement Port Collar: _____ w / _____ sack of cement
(depth) (depth)
Packer Type: _____ Size: _____ Inch Set at: _____ Feet
Total Depth: _____ Plug Back Depth: _____ Plug Back Method: _____

Geological Data:

Formation Name	Formation Top	Formation Base	Completion Information
1. _____	At: _____	to _____ Feet	Perforation Interval _____ to _____ Feet or Open Hole Interval _____ to _____ Feet
2. _____	At: _____	to _____ Feet	Perforation Interval _____ to _____ Feet or Open Hole Interval _____ to _____ Feet

UNDER PENALTY OF PERJURY I HEREBY ATTEST THAT THE INFORMATION CONTAINED HEREIN IS TRUE AND CORRECT TO THE BEST OF MY KNOWLEDGE

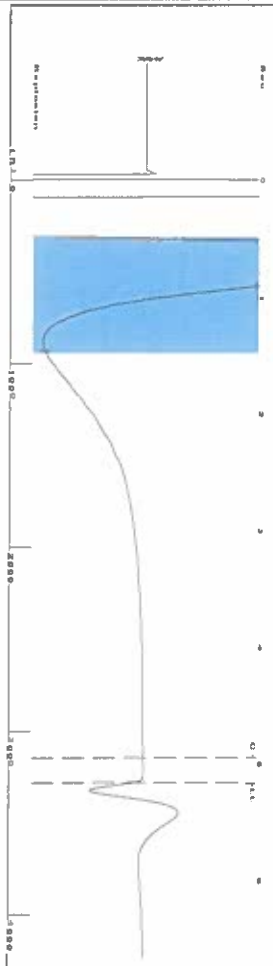
Submitted Electronically

Do NOT Write in This Space - KCC USE ONLY	Date Tested: _____	Results: _____	Date Plugged: _____	Date Repaired: _____	Date Put Back in Service: _____
	Review Completed by: _____ Comments: _____				
TA Approved: <input type="checkbox"/> Yes <input type="checkbox"/> Denied Date: _____					

Mail to the Appropriate KCC Conservation Office:

	KCC District Office #1 - 210 E. Frontview, Suite A, Dodge City, KS 67801	Phone 620.682.7933
	KCC District Office #2 - 3450 N. Rock Road, Building 600, Suite 601, Wichita, KS 67226	Phone 316.337.7400
	KCC District Office #3 - 137 E. 21st St., Chanute, KS 66720	Phone 620.902.6450
	KCC District Office #4 - 2301 E. 13th Street, Hays, KS 67601-2651	Phone 785.261.6250

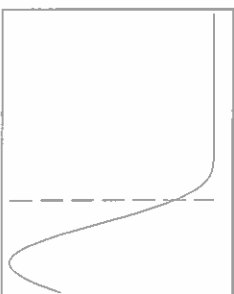
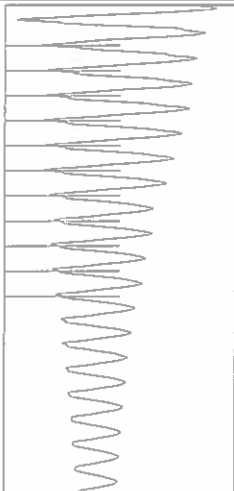
Group: SUBLETTE Well: Mosbarger B-1 (acquired on: 02/22/24 15:24:44)



Filter Type High Pass Automatic Collar Count Yes
 Manual Acoustic Velo 1233.46 ft/s Manual JTS/sec 19.4553

Time 5.171 sec
 Joints 103,508 JTS
 Depth 3281.21 ft

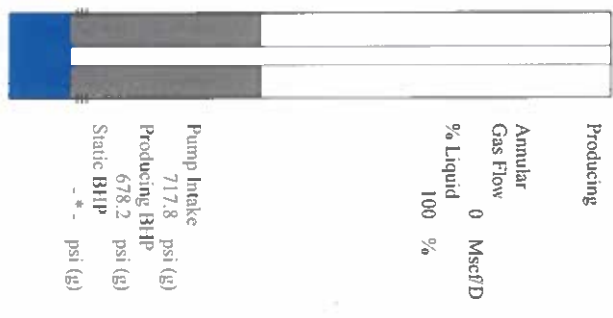
0.5 to 1.5 (Sec) |



Analysis Method: Automatic

Group: SUBLETTE Well: Mosbarger B-1 (acquired on: 02/22/24 15:24:44)

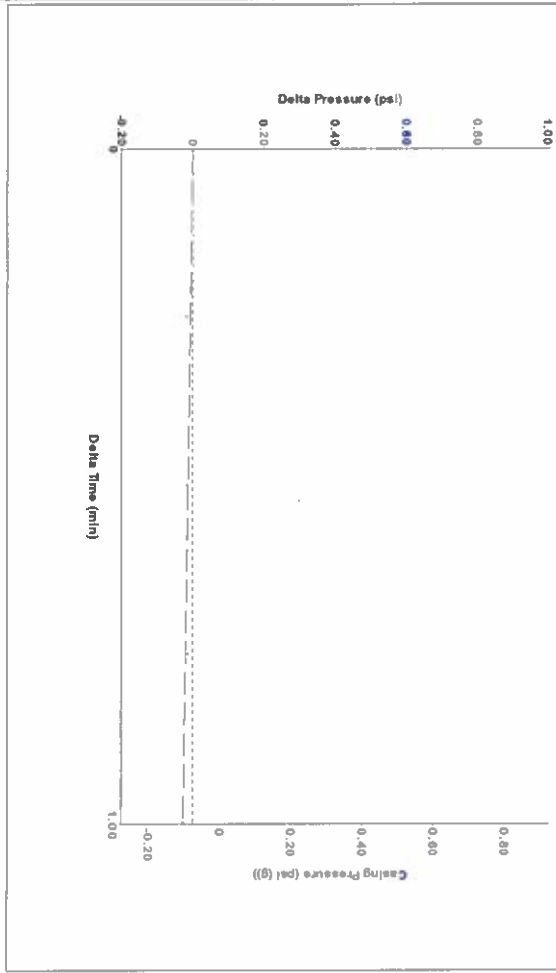
Production	Potential	Casing Pressure	Producing
Oil -*- BBL/D	-*- BBL/D	-0.1 psi (g)	Annular Gas Flow
Water -*- BBL/D	-*- BBL/D	-0.026 psi	0 Mscf/D
Gas -*- Mscf/D	-*- Mscf/D	1.00 min	% Liquid 100 %
IPR Method Vogel	Vogel	Gas/Liquid Interface Pressure	
PBHP/SBHP -*-	-*-	1.2 psi (g)	
Production Efficiency 0.0		Liquid Level Depth	
		3281.21 ft	
Oil 40 deg API		Pump Intake Depth	
Water 1.05 Sp.Gr. H2O		5439.00 ft	
Gas 0.73 Sp.Gr. AIR		Formation Depth	
Acoustic Velocity 1269.08 ft/s		5315.00 ft	



Formation Submergence
 Total Gaseous Liquid Column HIT (TVD) 2158 ft
 Equivalent Gas Free Liquid HIT (TVD) 2158 ft

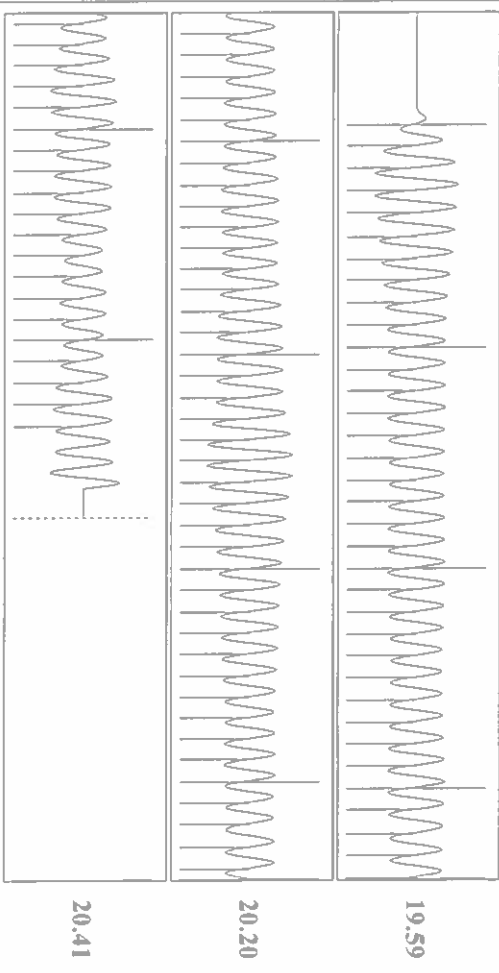
Pump Intake 717.8 psi (g)
 Producing BHP 678.2 psi (g)
 Static BHP -*- psi (g)

Group: SUBLETTE Well: Mosbarger B-1 (acquired on: 02/22/24 15:24:44)



Change in Pressure -0.03 psi
 Change in Time 1.00 min
 PT 14679 Range
 0 - ? psi

Group: SUBLETTE Well: Mosbarger B-1 (acquired on: 02/22/24 15:24:44)



Acoustic Velocity 1269.08 ft/s
 Joints Per Second 20.017 JTS/sec
 Depth to Liquid level 3281.21 ft
 Automatic Collar Count Yes

Joints counted 94
 Joints to liquid level 103,508
 Filter Width 17.4553
 Time to 1st Collar 0.26

Conservation Division
District Office No. 1
210 E. Frontview, Suite A
Dodge City, KS 67801



Phone: 620-682-7933
<http://kcc.ks.gov/>

Andrew J. French, Chairperson
Dwight D. Keen, Commissioner
Annie Kuether, Commissioner

Laura Kelly, Governor

02/26/2024

Katherine McClurkan
Merit Energy Company, LLC
13727 Noel Road, Suite 1200
Dallas, TX 75240-7362

Re: Temporary Abandonment
API 15-081-22006-00-00
Mosbarger B 1
SE/4 Sec.09-28S-33W
Haskell County, Kansas

Dear Katherine McClurkan:

"Your temporary abandonment (TA) application for the well listed above has been approved. In accordance with K.A.R. 82-3-111 the TA status of this well will expire 02/26/2025.

- * If you return this well to service or plug it, please notify the District Office.
- * If you sell this well you are required to file a Transfer of Operator form, T-1.
- * If the well will remain temporarily abandoned, you must submit a new TA application, CP-111, before 02/26/2025.

You may contact me at the number above if you have questions.

Very truly yours,

Michael Maier"