

KANSAS CORPORATION COMMISSION
OIL & GAS CONSERVATION DIVISION

TEMPORARY ABANDONMENT WELL APPLICATION

OPERATOR: License#
Name:
Address 1:
Address 2:
City: State: Zip:
Contact Person:
Phone:
Contact Person Email:
Field Contact Person:
Field Contact Person Phone:

API No. 15-
Spot Description:
Sec. Twp. S. R.
feet from N / S Line of Section
feet from E / W Line of Section
GPS Location: Lat: , Long:
Datum: NAD27 NAD83 WGS84
County: Elevation: GL KB
Lease Name: Well #:
Well Type: (check one) Oil Gas OG WSW Other:
SWD Permit #: ENHR Permit #:
Gas Storage Permit #:
Spud Date: Date Shut-In:

Table with 7 columns: Conductor, Surface, Production, Intermediate, Liner, Tubing. Rows include Size, Setting Depth, Amount of Cement, Top of Cement, Bottom of Cement.

Casing Fluid Level from Surface: How Determined? Date:
Casing Squeeze(s): to w / sacks of cement, to w / sacks of cement. Date:
Do you have a valid Oil & Gas Lease? Yes No
Depth and Type: Junk in Hole at Tools in Hole at Casing Leaks: Yes No Depth of casing leak(s):
Type Completion: ALT. I ALT. II Depth of: DV Tool: w / sacks of cement Port Collar: w / sack of cement
Packer Type: Size: Inch Set at: Feet
Total Depth: Plug Back Depth: Plug Back Method:

Geological Date:

Table with 4 columns: Formation Name, Formation Top, Formation Base, Completion Information. Rows 1 and 2.

UNDER PENALTY OF PERJURY I HEREBY ATTEST THAT THE INFORMATION CONTAINED HEREIN IS TRUE AND CORRECT TO THE BEST OF MY KNOWLEDGE

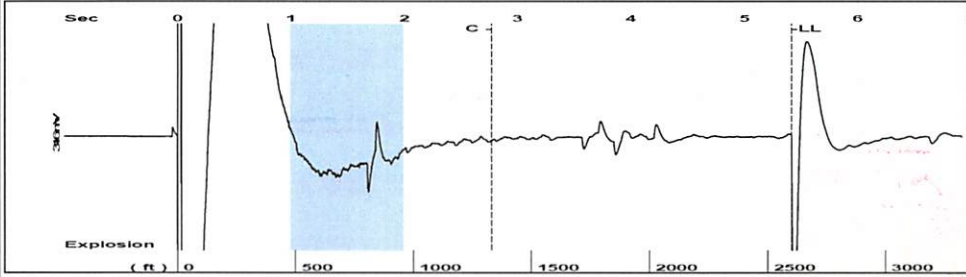
Submitted Electronically

Do NOT Write in This Space - KCC USE ONLY
Date Tested: Results: Date Plugged: Date Repaired: Date Put Back in Service:
Review Completed by: Comments:
TA Approved: Yes Denied Date:

Mail to the Appropriate KCC Conservation Office:

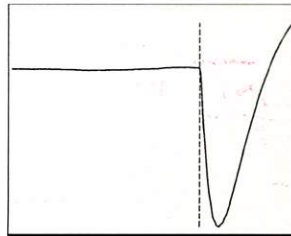
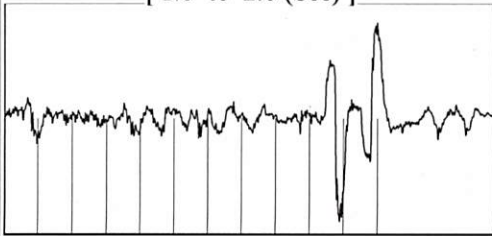
Table with 3 columns: District Office #, Address, Phone. Rows 1-4.

Group: 3G Production, LLC Well: ICHU 14 (acquired on: 02/27/24 15:14:07)



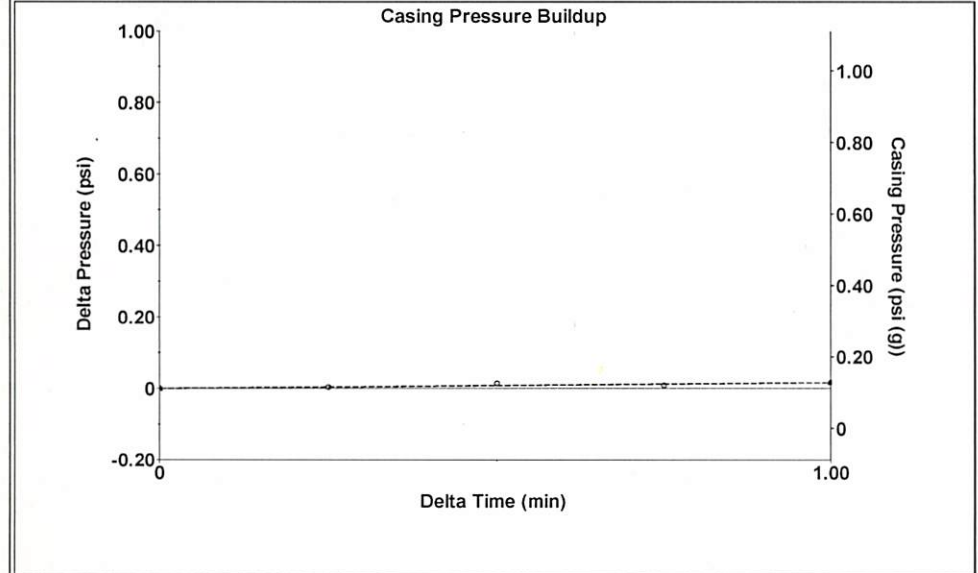
Filter Type High Pass Automatic Collar Count Yes Time 5.414 sec
 Manual Acoustic Veloc 912.23 ft/s Manual JTS/sec 14.3885 Joints 82.0303 Jts
 Depth 2600.36 ft

[1.0 to 2.0 (Sec)]



Analysis Method: Automatic

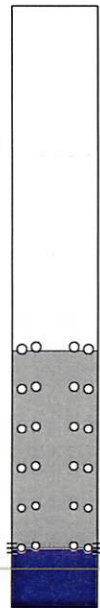
Group: 3G Production, LLC Well: ICHU 14 (acquired on: 02/27/24 15:14:07)



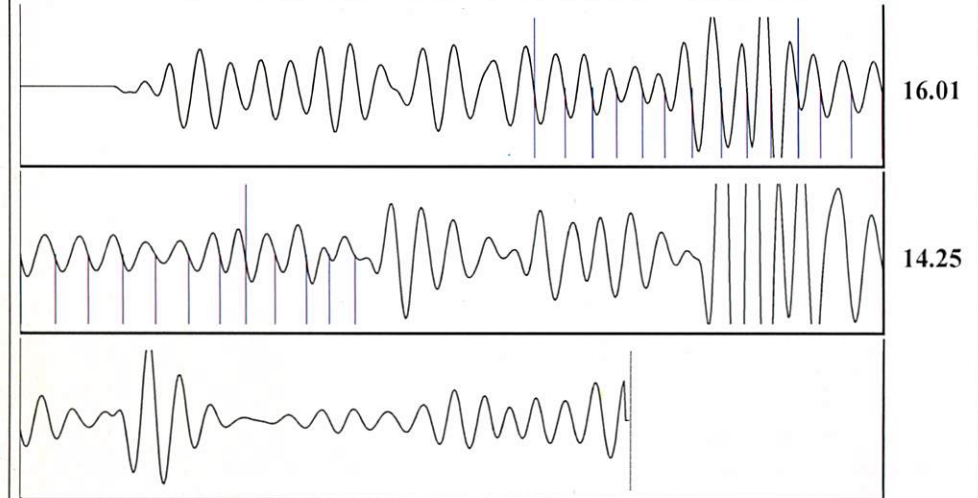
Change in Pressure 0.02 psi PT 15469
 Change in Time 1.00 min Range 0 - ? psi

Group: 3G Production, LLC Well: ICHU 14 (acquired on: 02/27/24 15:14:07)

Production Current	Potential	Casing Pressure	Producing
Oil - * -	- * - BBL/D	0.1 psi (g)	Annular Gas Flow
Water - * -	- * - BBL/D	Casing Pressure Buildup	1 Mscf/D
Gas - * -	- * - Mscf/D	0.017 psi	% Liquid
		1.00 min	100 %
IPR Method	Vogel	Gas/Liquid Interface Pressure	
PBHP/SBHP	- * -	1.5 psi (g)	
Production Efficiency	0.0		
Oil 40 deg.API		Liquid Level Depth	
Water 1.05 Sp.Gr.H2O		2600.36 ft	
Gas 1.01 Sp.Gr.AIR		Pump Intake Depth	
		4400.00 ft	
Acoustic Velocity	960.606 ft/s	Formation Depth	
		4400.00 ft	
Formation Submergence			
Total Gaseous Liquid Column HT (TVD)	1800 ft		
Equivalent Gas Free Liquid HT (TVD)	1800 ft		
Acoustic Test			



Group: 3G Production, LLC Well: ICHU 14 (acquired on: 02/27/24 15:14:07)



Acoustic Velocity 960.606 ft/s Joints counted 24
 Joints Per Second 15.1515 jts/sec Joints to liquid level 82.0303
 Depth to liquid level 2600.36 ft Filter Width 12.3885 16.3885
 Automatic Collar Count Yes Time to 1st Collar 1.188 2.772

Conservation Division
District Office No. 1
210 E. Frontview, Suite A
Dodge City, KS 67801



Phone: 620-682-7933
<http://kcc.ks.gov/>

Andrew J. French, Chairperson
Dwight D. Keen, Commissioner
Annie Kuether, Commissioner

Laura Kelly, Governor

02/29/2024

Lori Withers
Iuka-Carmi Development LLC
PO BOX 847
PRATT, KS 67124-0847

Re: Temporary Abandonment
API 15-151-10204-00-00
ICHU 14
NE/4 Sec.07-27S-12W
Pratt County, Kansas

Dear Lori Withers:

"Your temporary abandonment (TA) application for the well listed above has been approved. In accordance with K.A.R. 82-3-111 the TA status of this well will expire 02/28/2025.

- * If you return this well to service or plug it, please notify the District Office.
- * If you sell this well you are required to file a Transfer of Operator form, T-1.
- * If the well will remain temporarily abandoned, you must submit a new TA application, CP-111, before 02/28/2025.

You may contact me at the number above if you have questions.

Very truly yours,

Michael Maier"