

KANSAS CORPORATION COMMISSION
OIL & GAS CONSERVATION DIVISION

TEMPORARY ABANDONMENT WELL APPLICATION

OPERATOR: License#
Name:
Address 1:
Address 2:
City: State: Zip:
Contact Person:
Phone:
Contact Person Email:
Field Contact Person:
Field Contact Person Phone:

API No. 15-
Spot Description:
Sec. Twp. S. R.
feet from N / S Line of Section
feet from E / W Line of Section
GPS Location: Lat: , Long:
Datum: NAD27 NAD83 WGS84
County: Elevation: GL KB
Lease Name: Well #:
Well Type: (check one) Oil Gas OG WSW Other:
SWD Permit #: ENHR Permit #:
Gas Storage Permit #:
Spud Date: Date Shut-In:

Table with 7 columns: Conductor, Surface, Production, Intermediate, Liner, Tubing. Rows include Size, Setting Depth, Amount of Cement, Top of Cement, Bottom of Cement.

Casing Fluid Level from Surface: How Determined? Date:

Casing Squeeze(s): (top) to (bottom) w / sacks of cement, (top) to (bottom) w / sacks of cement. Date:

Do you have a valid Oil & Gas Lease? Yes No

Depth and Type: Junk in Hole at (depth) Tools in Hole at (depth) Casing Leaks: Yes No Depth of casing leak(s):

Type Completion: ALT. I ALT. II Depth of: DV Tool: (depth) w / sacks of cement Port Collar: (depth) w / sack of cement

Packer Type: Size: Inch Set at: Feet

Total Depth: Plug Back Depth: Plug Back Method:

Geological Date:

Table with 4 columns: Formation Name, Formation Top, Formation Base, Completion Information. Rows 1 and 2.

UNDER PENALTY OF PERJURY I HEREBY ATTEST THAT THE INFORMATION CONTAINED HEREIN IS TRUE AND CORRECT TO THE BEST OF MY KNOWLEDGE

Submitted Electronically

Do NOT Write in This Space - KCC USE ONLY
Date Tested: Results: Date Plugged: Date Repaired: Date Put Back in Service:
Review Completed by: Comments:
TA Approved: Yes Denied Date:

Mail to the Appropriate KCC Conservation Office:

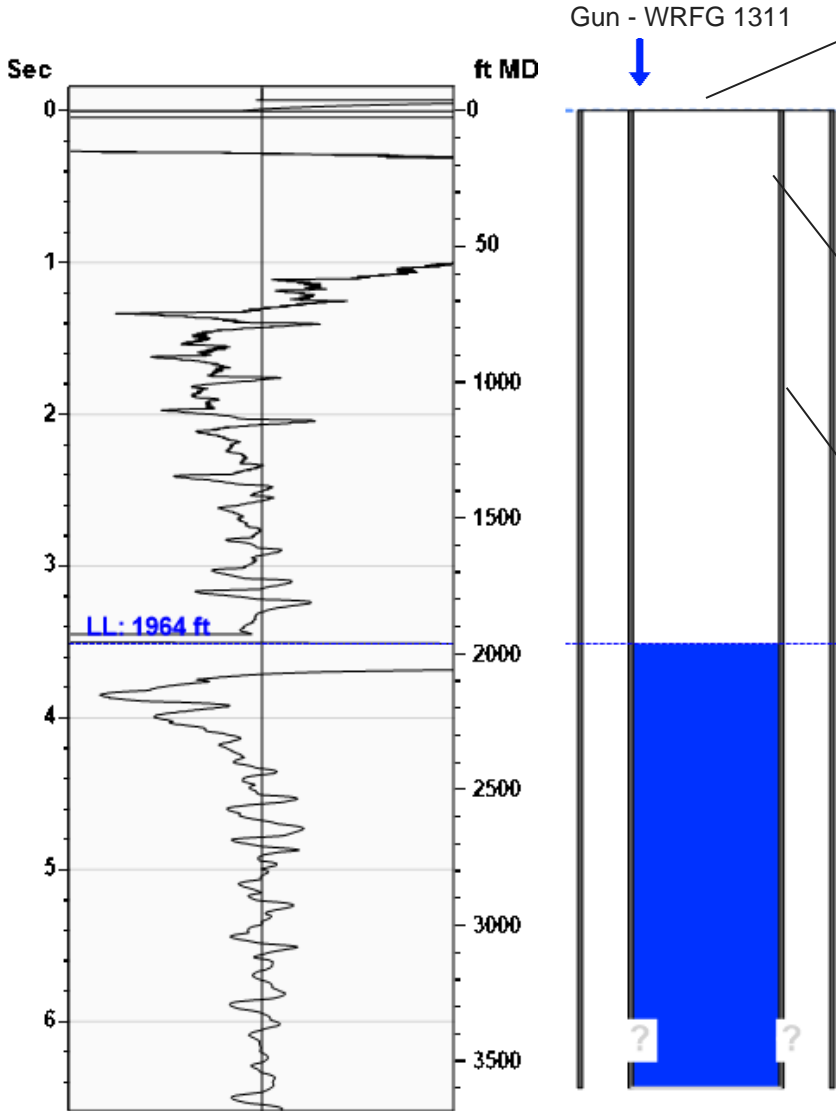
Table with 3 columns: District Office #, Address, Phone. Rows 1-4.

Liquid Level

1964 ft MD

Fluid Above Tubing
Gas Free Above Tubing

.* ft TVD
.* ft TVD



Production

Date Entered	02/28/24		
Oil	Current	Potential	BBL/D
Water	.*	.*	BBL/D
Gas	.*	.*	Mscf/D
IPR Method	Vogel		
PBHP/SBHP	1.00		
Producing Efficiency	0.00%		

Casing Pressure

Pressure	-0.1 psi (g)
----------	--------------

Annular Gas Flow

Gas Flow	.* Mscf/D
----------	-----------

Fluid Properties

% Liquid Above Tubing	100.00%
% Liquid Below Tubing	.*

Depths

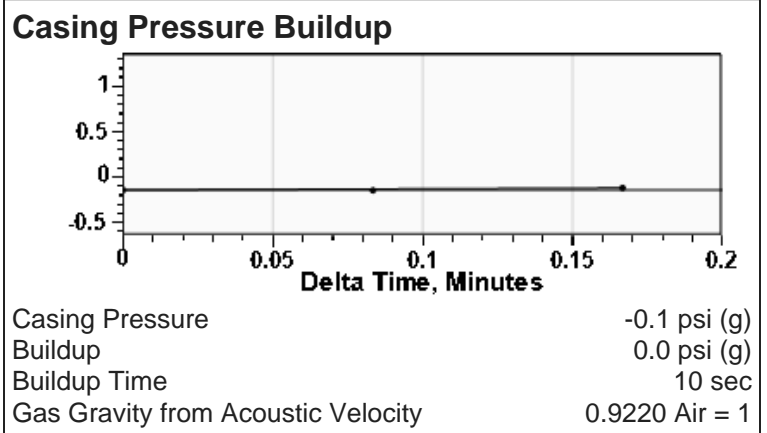
Tubing Depth	0 ft
Formation Depth	0 ft

Wellbore Pressures

TIP	.*
PBHP	.*
SBHP	.*
Gas/Liq Interface	.*

Acoustic Velocity

Surface Temp	70 deg F	0.00% CO2
Bottomhole Temp	150 deg F	0.00% N2
Pressure	-0.1 psi (g)	0.00% H2S
Gas Gravity	0.9220 Air = 1	
Acoustic Velocity	1118 ft/s	
Joints Per Sec.	17.64 Jts/sec	
Joints To Liquid	61.96 Jts	
Calculated From Known Gas Specific Gravity		



Comments and Recommendations

Echometer Company
5001 Ditto Lane
Wichita Falls, TX 76302
(940) 767-4334
info@echometer.com

Conservation Division
District Office No. 4
2301 E. 13th Street
Hays, KS 67601-2651



Phone: 785-261-6250
<http://kcc.ks.gov/>

Andrew J. French, Chairperson
Dwight D. Keen, Commissioner
Annie Kuether, Commissioner

Laura Kelly, Governor

03/06/2024

Kennis Becker
HG Oil Holdings, LLC
PO BOX 97
PLAINVILLE, KS 67663-0097

Re: Temporary Abandonment
API 15-167-21926-00-02
BRACK A 3
SE/4 Sec.08-15S-12W
Russell County, Kansas

Dear Kennis Becker:

"Your temporary abandonment (TA) application for the well listed above has been approved. In accordance with K.A.R. 82-3-111 the TA status of this well will expire 03/06/2025.

- * If you return this well to service or plug it, please notify the District Office.
- * If you sell this well you are required to file a Transfer of Operator form, T-1.
- * If the well will remain temporarily abandoned, you must submit a new TA application, CP-111, before 03/06/2025.

You may contact me at the number above if you have questions.

Very truly yours,

RICHARD WILLIAMS"