

KANSAS CORPORATION COMMISSION
OIL & GAS CONSERVATION DIVISION

TEMPORARY ABANDONMENT WELL APPLICATION

OPERATOR: License#
Name:
Address 1:
Address 2:
City: State: Zip:
Contact Person:
Phone:
Contact Person Email:
Field Contact Person:
Field Contact Person Phone:

API No. 15-
Spot Description:
Sec. Twp. S. R.
GPS Location: Lat: Long:
Datum: NAD27 NAD83 WGS84
County: Elevation:
Lease Name: Well #:
Well Type: Oil Gas OG WSW Other:
SWD Permit #: ENHR Permit #:
Gas Storage Permit #:
Spud Date: Date Shut-In:

Table with 7 columns: Conductor, Surface, Production, Intermediate, Liner, Tubing. Rows include Size, Setting Depth, Amount of Cement, Top of Cement, Bottom of Cement.

Casing Fluid Level from Surface: How Determined? Date:
Casing Squeeze(s): to w / sacks of cement, to w / sacks of cement. Date:
Do you have a valid Oil & Gas Lease? Yes No
Depth and Type: Junk in Hole at Tools in Hole at Casing Leaks: Yes No Depth of casing leak(s):
Type Completion: ALT. I ALT. II Depth of: DV Tool: w / sacks of cement Port Collar: w / sack of cement
Packer Type: Size: Inch Set at: Feet
Total Depth: Plug Back Depth: Plug Back Method:

Geological Data:

Table with 4 columns: Formation Name, Formation Top, Formation Base, Completion Information. Rows 1 and 2.

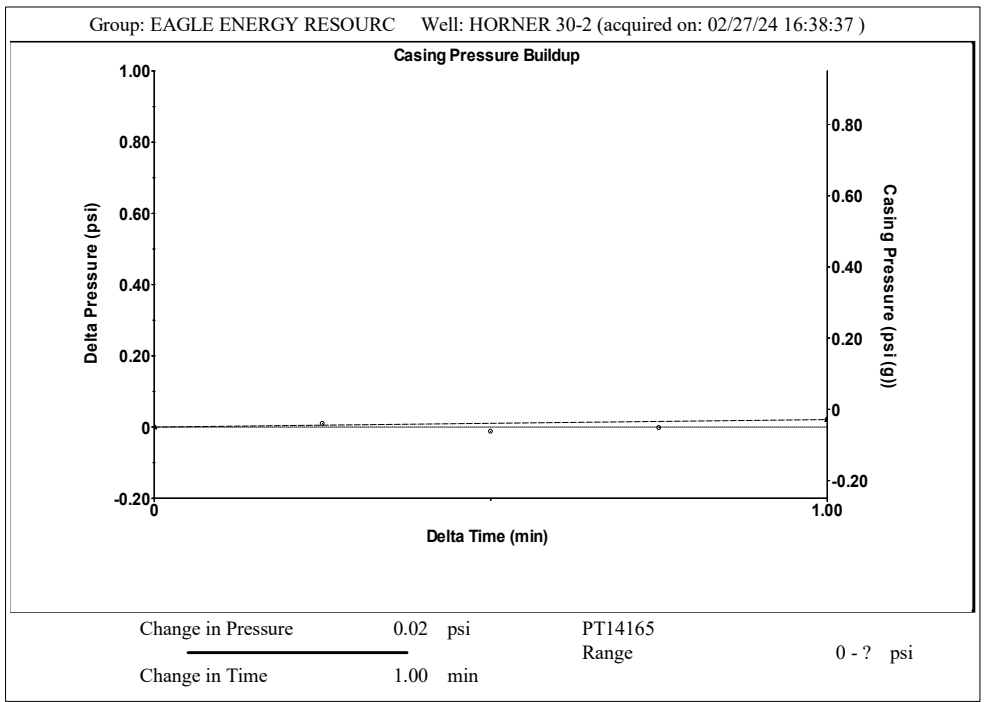
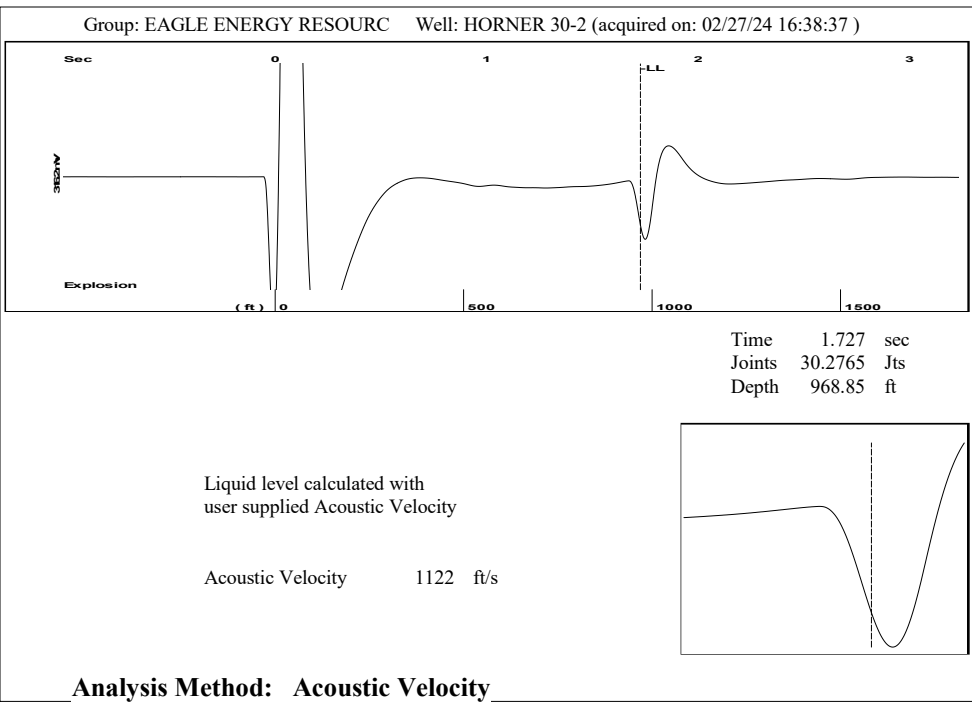
UNDER PENALTY OF PERJURY I HEREBY ATTEST THAT THE INFORMATION CONTAINED HEREIN IS TRUE AND CORRECT TO THE BEST OF MY KNOWLEDGE

Submitted Electronically

Do NOT Write in This Space - KCC USE ONLY
Date Tested: Results: Date Plugged: Date Repaired: Date Put Back in Service:
Review Completed by: Comments:
TA Approved: Yes Denied Date:

Mail to the Appropriate KCC Conservation Office:

Table with 3 columns: District Office #, Address, Phone. Rows 1-4.



Group: EAGLE ENERGY RESOURC Well: HORNER 30-2 (acquired on: 02/27/24 16:38:37)

Production Current	Potential	Casing Pressure		Producing	
Oil - * -	- * - BBL/D	-0.0 psi (g)		Annular Gas Flow	- * - Mscf/D
Water - * -	- * - BBL/D	Casing Pressure Buildup		% Liquid	100 %
Gas - * -	- * - Mscf/D	0.021 psi			
		1.00 min			
IPR Method	Vogel	Gas/Liquid Interface Pressure			
PBHP/SBHP	- * -	- * - psi (g)			
Production Efficiency	0.0				
Oil 40 deg.API		Liquid Level Depth			
Water 1.05 Sp.Gr.H2O		968.85 ft			
Gas 0.88 Sp.Gr.AIR		Pump Intake Depth			
		- * - ft			
Acoustic Velocity	1122 ft/s	Formation Depth			
		6000.00 ft			
Formation Submergence			Pump Intake	- * - psi (g)	
Total Gaseous Liquid Column HT (TVD)		- * - ft	Producing BHP	- * - psi (g)	
Equivalent Gas Free Liquid HT (TVD)		- * - ft	Static BHP	- * - psi (g)	
Acoustic Test				- * - psi (g)	

Group: EAGLE ENERGY RESOURC Well: HORNER 30-2 (acquired on: 02/27/24 16:38:37)

Entered Acoustic Velocity for Liquid Level depth determination

Conservation Division
District Office No. 1
210 E. Frontview, Suite A
Dodge City, KS 67801



Phone: 620-682-7933
<http://kcc.ks.gov/>

Andrew J. French, Chairperson
Dwight D. Keen, Commissioner
Annie Kuether, Commissioner

Laura Kelly, Governor

03/08/2024

Teri Goebel
Eagle Energy Resources LLC
153 S. BROADWAY ST.
LAPORTE, TX 77571-5305

Re: Temporary Abandonment
API 15-119-21028-00-00
HORNER 30 2
SW/4 Sec.30-33S-26W
Meade County, Kansas

Dear Teri Goebel:

"Your temporary abandonment (TA) application for the well listed above has been approved. In accordance with K.A.R. 82-3-111 the TA status of this well will expire 03/08/2025.

- * If you return this well to service or plug it, please notify the District Office.
- * If you sell this well you are required to file a Transfer of Operator form, T-1.
- * If the well will remain temporarily abandoned, you must submit a new TA application, CP-111, before 03/08/2025.

You may contact me at the number above if you have questions.

Very truly yours,

Michael Maier"