

KANSAS CORPORATION COMMISSION
OIL & GAS CONSERVATION DIVISION

Form must be Typed
Form must be signed

TEMPORARY ABANDONMENT WELL APPLICATION

All blanks must be complete

OPERATOR: License#
Name:
Address 1:
Address 2:
City: State: Zip:
Contact Person:
Phone:
Contact Person Email:
Field Contact Person:
Field Contact Person Phone:

API No. 15-
Spot Description:
Sec. Twp. S. R.
GPS Location: Lat: Long:
Datum: NAD27 NAD83 WGS84
County: Elevation:
Lease Name: Well #:
Well Type: Oil Gas OG WSW Other:
SWD Permit #: ENHR Permit #:
Gas Storage Permit #:
Spud Date: Date Shut-In:

Table with 7 columns: Conductor, Surface, Production, Intermediate, Liner, Tubing. Rows include Size, Setting Depth, Amount of Cement, Top of Cement, Bottom of Cement.

Casing Fluid Level from Surface: How Determined? Date:
Casing Squeeze(s): to w / sacks of cement, to w / sacks of cement. Date:
Do you have a valid Oil & Gas Lease? Yes No
Depth and Type: Junk in Hole at Tools in Hole at Casing Leaks: Yes No Depth of casing leak(s):
Type Completion: ALT. I ALT. II Depth of: DV Tool: w / sacks of cement Port Collar: w / sack of cement
Packer Type: Size: Inch Set at: Feet
Total Depth: Plug Back Depth: Plug Back Method:

Geological Data:

Table with 4 columns: Formation Name, Formation Top, Formation Base, Completion Information. Rows 1 and 2.

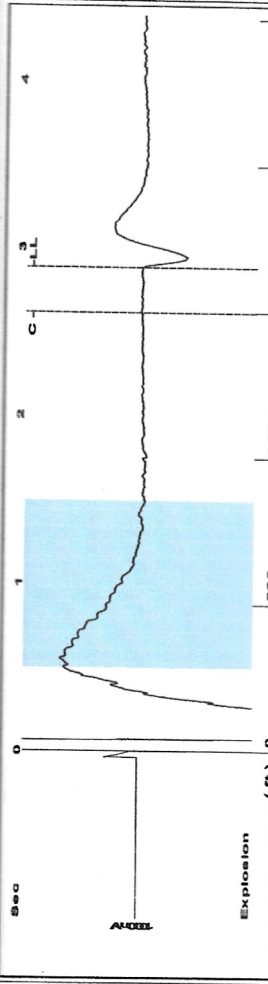
UNDER PENALTY OF PERJURY I HEREBY ATTEST THAT THE INFORMATION CONTAINED HEREIN IS TRUE AND CORRECT TO THE BEST OF MY KNOWLEDGE

Submitted Electronically

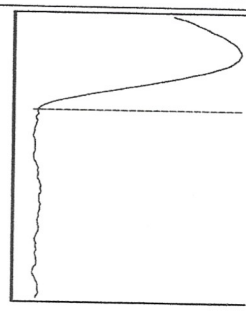
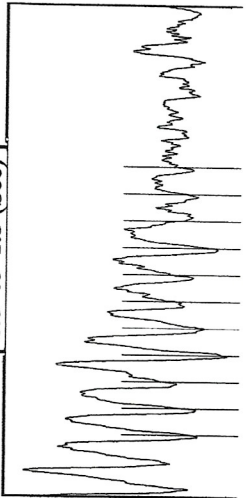
Do NOT Write in This Space - KCC USE ONLY
Date Tested: Results: Date Plugged: Date Repaired: Date Put Back in Service:
Review Completed by: Comments:
TA Approved: Yes Denied Date:

Mail to the Appropriate KCC Conservation Office:

Table with 2 columns: Office Address, Phone. Rows for District Office #1, #2, #3, #4.



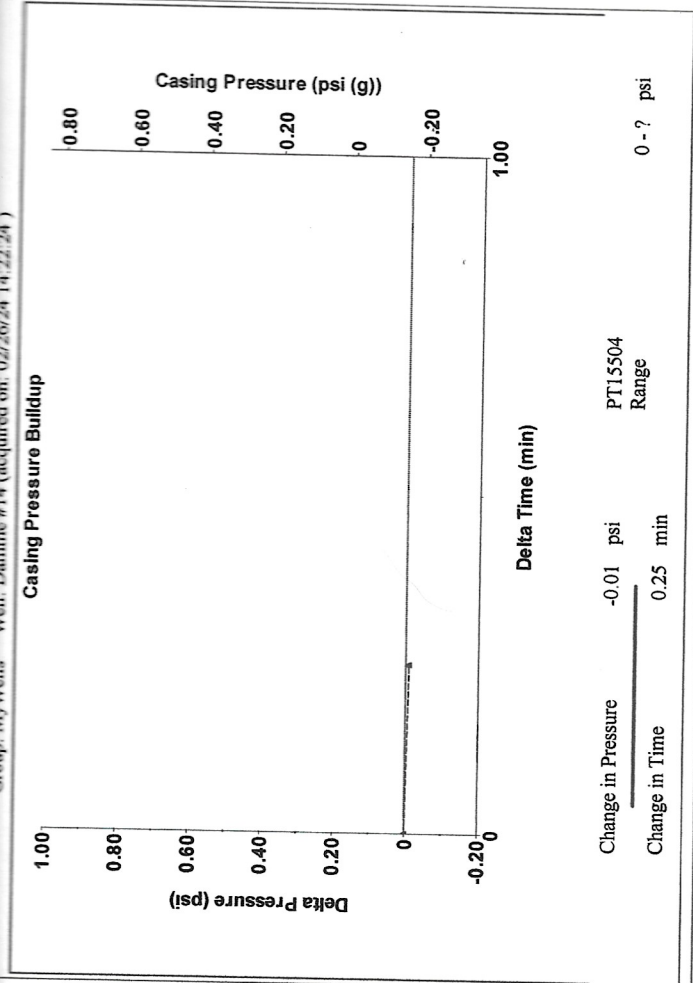
Filter Type High Pass Automatic Collar Count Yes
 Manual Acoustic Veloc 133.46 ft/s Manual JTS/sec 18.2815
 Time 2.883 sec
 Joints 53.2513 Jts
 Depth 1650.79 ft



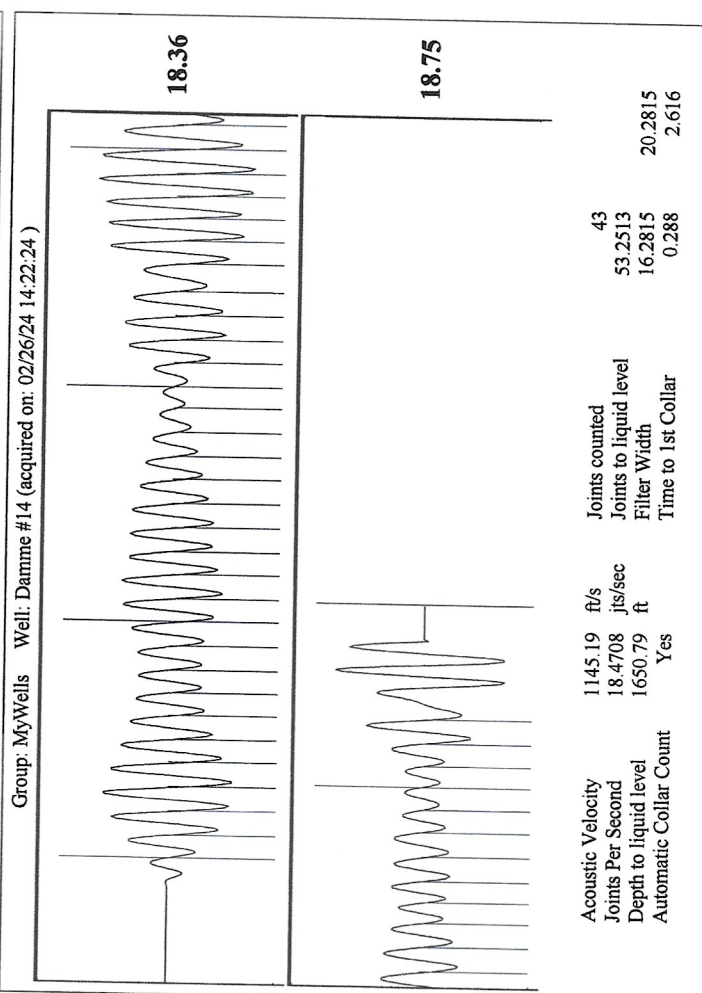
Analysis Method: Automatic

Group: MyWells Well: Damme #14 (acquired on: 02/26/24 14:22:24)

| | | | |
|--------------------------------------|--------------|-------------------------------|------------------------------|
| Production | Potential | Casing Pressure | Producing |
| Oil 0 | - * - BBL/D | -0.2 psi (g) | Annular Gas Flow 0 Mscf/D |
| Water 0 | - * - BBL/D | -0.009 psi | % Liquid 100 % |
| Gas 0.0 | - * - Mscf/D | 0.25 min | Pump Intake 1324.1 psi (g) |
| IPR Method | Vogel | Gas/Liquid Interface Pressure | Producing BHP 1101.4 psi (g) |
| PBHP/SBHP | - * - | 0.6 psi (g) | Static BHP - * - psi (g) |
| Production Efficiency | 0.0 | Liquid Level Depth | |
| Oil 39 deg.API | | 1650.79 ft | |
| Water 1.05 Sp.Gr.H2O | | Pump Intake Depth | |
| Gas 0.83 Sp.Gr.AIR | | 4562.00 ft | |
| Acoustic Velocity | 1145.19 ft/s | Formation Depth | |
| | | 4072.00 ft | |
| Formation Submergence | | | |
| Total Gaseous Liquid Column HT (TYD) | 2911 ft | | |
| Equivalent Gas Free Liquid HT (TYD) | 2911 ft | | |
| Acoustic Test | | | |



Change in Pressure -0.01 psi
 Change in Time 0.25 min
 PT15504 Range



Acoustic Velocity 1145.19 ft/s
 Joints Per Second 18.4708 jts/sec
 Depth to liquid level 1650.79 ft
 Automatic Collar Count Yes
 Joints counted 43
 Joints to liquid level 53.2513
 Filter Width 16.2815
 Time to 1st Collar 20.2815
 2.616

Conservation Division
District Office No. 1
210 E. Frontview, Suite A
Dodge City, KS 67801



Phone: 620-682-7933
<http://kcc.ks.gov/>

Andrew J. French, Chairperson
Dwight D. Keen, Commissioner
Annie Kuether, Commissioner

Laura Kelly, Governor

03/08/2024

Kent Strube
Hartman Oil Co., Inc.
10500 E BERKELEY SQ PKWY STE 100
WICHITA, KS 67206-6816

Re: Temporary Abandonment
API 15-055-10052-00-00
DAMME 14
NE/4 Sec.28-22S-33W
Finney County, Kansas

Dear Kent Strube:

"Your temporary abandonment (TA) application for the well listed above has been approved. In accordance with K.A.R. 82-3-111 the TA status of this well will expire 03/08/2025.

- * If you return this well to service or plug it, please notify the District Office.
- * If you sell this well you are required to file a Transfer of Operator form, T-1.
- * If the well will remain temporarily abandoned, you must submit a new TA application, CP-111, before 03/08/2025.

You may contact me at the number above if you have questions.

Very truly yours,

Michael Maier"