

KANSAS CORPORATION COMMISSION
OIL & GAS CONSERVATION DIVISION

TEMPORARY ABANDONMENT WELL APPLICATION

OPERATOR: License#
Name:
Address 1:
Address 2:
City: State: Zip:
Contact Person:
Phone:
Contact Person Email:
Field Contact Person:
Field Contact Person Phone:

API No. 15-
Spot Description:
Sec. Twp. S. R.
GPS Location: Lat: Long:
Datum: NAD27 NAD83 WGS84
County: Elevation:
Lease Name: Well #:
Well Type: Oil Gas OG WSW Other:
SWD Permit #: ENHR Permit #:
Gas Storage Permit #:
Spud Date: Date Shut-In:

Table with 7 columns: Conductor, Surface, Production, Intermediate, Liner, Tubing. Rows include Size, Setting Depth, Amount of Cement, Top of Cement, Bottom of Cement.

Casing Fluid Level from Surface: How Determined? Date:
Casing Squeeze(s): to w / sacks of cement, to w / sacks of cement. Date:
Do you have a valid Oil & Gas Lease? Yes No
Depth and Type: Junk in Hole at Tools in Hole at Casing Leaks: Yes No Depth of casing leak(s):
Type Completion: ALT. I ALT. II Depth of: DV Tool: w / sacks of cement Port Collar: w / sack of cement
Packer Type: Size: Inch Set at: Feet
Total Depth: Plug Back Depth: Plug Back Method:

Geological Data:

Table with 4 columns: Formation Name, Formation Top, Formation Base, Completion Information. Rows 1 and 2.

UNDER PENALTY OF PERJURY I HEREBY ATTEST THAT THE INFORMATION CONTAINED HEREIN IS TRUE AND CORRECT TO THE BEST OF MY KNOWLEDGE

Submitted Electronically

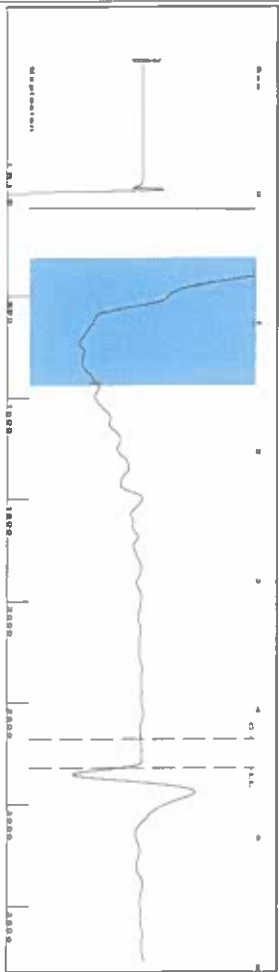
Do NOT Write in This Space - KCC USE ONLY
Date Tested: Results: Date Plugged: Date Repaired: Date Put Back in Service:
Review Completed by: Comments:
TA Approved: Yes Denied Date:

Mail to the Appropriate KCC Conservation Office:

Table with 2 columns: Office Address, Phone. Rows for District Office #1, #2, #3, #4.



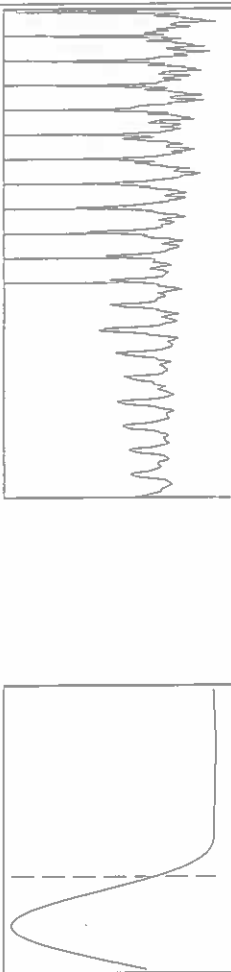
Group: SUBLETTE Well: eubank C-4 (acquired on: 03/11/24 13:20:50)



Filter Type High Pass Automatic Collar Count Yes
 Manual Acoustic Vel 1241.97 ft/s Manual JTS/sec 19.7239

Time 4.455 sec
 Joints 89.5477 JIS
 Depth 2819.32 ft

[0.5 to 1.5 (Sec)]



Analysis Method: Automatic

Group: SUBLETTE Well: eubank C-4 (acquired on: 03/11/24 13:20:50)

Production	Potential	Casing Pressure	Producing
Current	BBL/D	42.5 psi (g)	Annular
Oil	BBL/D	Casing Pressure Buildup	Gas Flow
Water	Misc/D	0.068 psi	% Liquid
Gas	Misc/D	1.00 min	92 %
IPR Method	Vogel	Gas/Liquid Interface Pressure	
PBHP/SBHP	0.0	46.6 psi (g)	
Production Efficiency		Liquid Level Depth	
		2819.32 ft	
Oil 40 deg API		Pump Intake Depth	
Water 1.05 Sp.Gr:H2O		2999.00 ft	
Gas 0.73 Sp.Gr:AIR		Formation Depth	
Acoustic Velocity	1265.69 ft/s	2989.00 ft	
Formation Submergence			
Total Gaseous Liquid Column HIT (TVDP)	180 ft		
Equivalent Gas Free Liquid HIT (TVDP)	167 ft		
3/11/24			

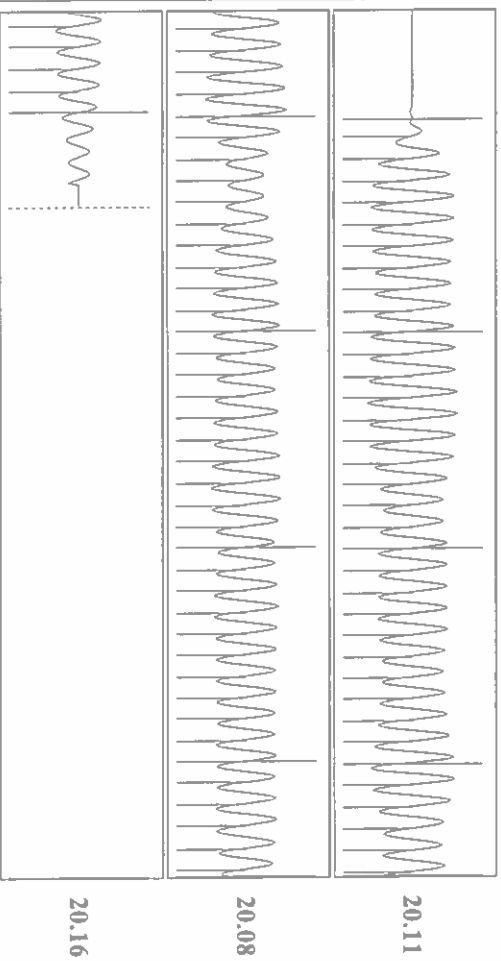


Group: SUBLETTE Well: eubank C-4 (acquired on: 03/11/24 13:20:50)



Change in Pressure 0.07 psi PT 14679
 Change in Time 1.00 min Range 0 - 2 psi

Group: SUBLETTE Well: eubank C-4 (acquired on: 03/11/24 13:20:50)



Acoustic Velocity 1265.69 ft/s Joints counted 80
 Joints Per Second 20.1005 JIS/sec Joints to liquid level 89.5477
 Depth to liquid level 2819.32 ft Filter Width 17.7239
 Automatic Collar Count Yes Time to 1st Collar 0.252 4.232

03/13/2024

Katherine McClurkan
Merit Energy Company, LLC
13727 Noel Raod, Suite 1200
Dallas, TX 75240

Re: Temporary Abandonment
API 15-081-20121-00-00
Eubank C 4
NE/4 Sec.07-28S-34W
Haskell County, Kansas

Dear Katherine McClurkan:

"Your temporary abandonment (TA) application for the well listed above has been approved. In accordance with K.A.R. 82-3-111 the TA status of this well will expire 03/13/2025.

- * If you return this well to service or plug it, please notify the District Office.
- * If you sell this well you are required to file a Transfer of Operator form, T-1.
- * If the well will remain temporarily abandoned, you must submit a new TA application, CP-111, before 03/13/2025.

You may contact me at the number above if you have questions.

Very truly yours,

Michael Maier"