

KANSAS CORPORATION COMMISSION
OIL & GAS CONSERVATION DIVISION

TEMPORARY ABANDONMENT WELL APPLICATION

OPERATOR: License# _____
 Name: _____
 Address 1: _____
 Address 2: _____
 City: _____ State: _____ Zip: _____ + _____
 Contact Person: _____
 Phone: (_____) _____
 Contact Person Email: _____
 Field Contact Person: _____
 Field Contact Person Phone: (_____) _____

API No. 15- _____
 Spot Description: _____
 _____ - _____ - _____ - _____ Sec. _____ Twp. _____ S. R. _____ E W
 _____ feet from N / S Line of Section
 _____ feet from E / W Line of Section
 GPS Location: Lat: _____, Long: _____
(e.g. xx.xxxxx) (e.g. -xxx.xxxxx)
 Datum: NAD27 NAD83 WGS84
 County: _____ Elevation: _____ GL KB
 Lease Name: _____ Well #: _____
 Well Type: (check one) Oil Gas OG WSW Other: _____
 SWD Permit #: _____ ENHR Permit #: _____
 Gas Storage Permit #: _____
 Spud Date: _____ Date Shut-In: _____

	Conductor	Surface	Production	Intermediate	Liner	Tubing
Size						
Setting Depth						
Amount of Cement						
Top of Cement						
Bottom of Cement						

Casing Fluid Level from Surface: _____ How Determined? _____ Date: _____
 Casing Squeeze(s): _____ to _____ w / _____ sacks of cement, _____ to _____ w / _____ sacks of cement. Date: _____
(top) (bottom) (top) (bottom)
 Do you have a valid Oil & Gas Lease? Yes No
 Depth and Type: Junk in Hole at _____ Tools in Hole at _____ Casing Leaks: Yes No Depth of casing leak(s): _____
(depth) (depth)
 Type Completion: ALT. I ALT. II Depth of: DV Tool: _____ w / _____ sacks of cement Port Collar: _____ w / _____ sack of cement
(depth) (depth)
 Packer Type: _____ Size: _____ Inch Set at: _____ Feet
 Total Depth: _____ Plug Back Depth: _____ Plug Back Method: _____

Geological Data:

Formation Name	Formation Top	Formation Base	Completion Information
1. _____	At: _____	to _____ Feet	Perforation Interval _____ to _____ Feet or Open Hole Interval _____ to _____ Feet
2. _____	At: _____	to _____ Feet	Perforation Interval _____ to _____ Feet or Open Hole Interval _____ to _____ Feet

UNDER PENALTY OF PERJURY I HEREBY ATTEST THAT THE INFORMATION CONTAINED HEREIN IS TRUE AND CORRECT TO THE BEST OF MY KNOWLEDGE

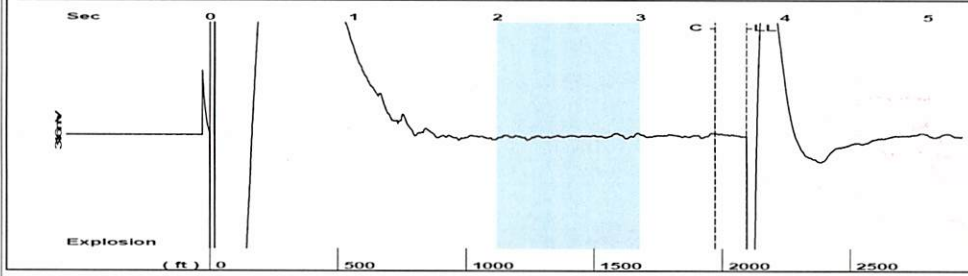
Submitted Electronically

Do NOT Write in This Space - KCC USE ONLY	Date Tested: _____	Results: _____	Date Plugged: _____	Date Repaired: _____	Date Put Back in Service: _____
	Review Completed by: _____ Comments: _____				
TA Approved: <input type="checkbox"/> Yes <input type="checkbox"/> Denied Date: _____					

Mail to the Appropriate KCC Conservation Office:

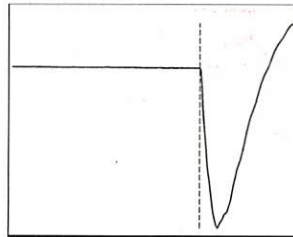
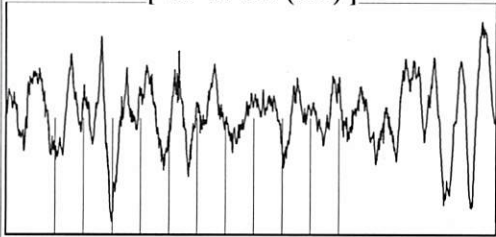
	KCC District Office #1 - 210 E. Frontview, Suite A, Dodge City, KS 67801	Phone 620.682.7933
	KCC District Office #2 - 3450 N. Rock Road, Building 600, Suite 601, Wichita, KS 67226	Phone 316.337.7400
	KCC District Office #3 - 137 E. 21st St., Chanute, KS 66720	Phone 620.902.6450
	KCC District Office #4 - 2301 E. 13th Street, Hays, KS 67601-2651	Phone 785.261.6250

Group: 3G Production, LLC Well: Peoples Bank (acquired on: 03/13/24 15:47:20)



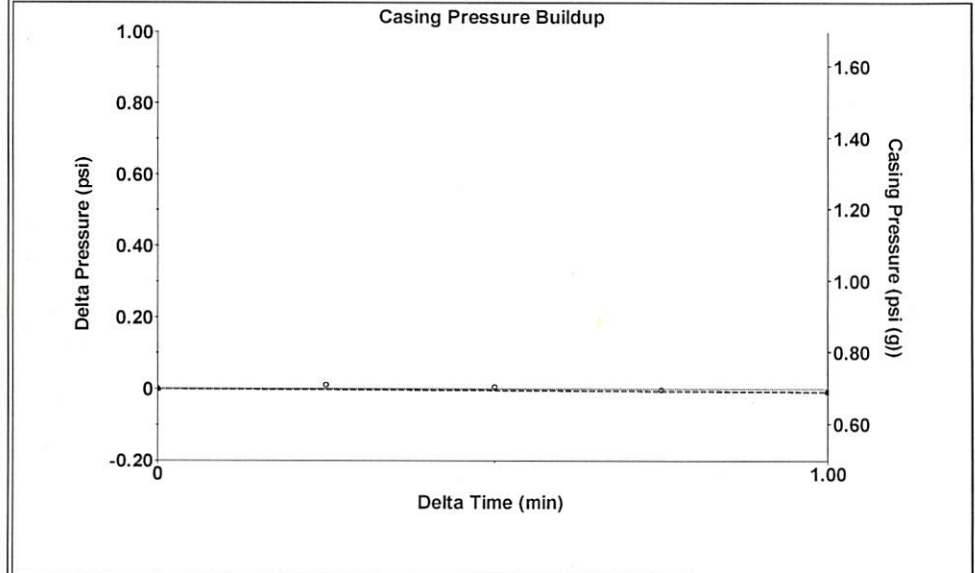
Filter Type High Pass Automatic Collar Count Yes Time 3.733 sec
 Manual Acoustic Velo 1089.35 ft/s Manual JTS/sec 17.1821 Joints 66.0318 Jts
 Depth 2093.21 ft

[2.0 to 3.0 (Sec)]



Analysis Method: Automatic

Group: 3G Production, LLC Well: Peoples Bank (acquired on: 03/13/24 15:47:20)



Change in Pressure -0.01 psi PT 15469
 Change in Time 1.00 min Range 0 - ? psi

Group: 3G Production, LLC Well: Peoples Bank (acquired on: 03/13/24 15:47:20)

Production Current Potential
 Oil - * - - * - BBL/D
 Water - * - - * - BBL/D
 Gas - * - - * - Mscf/D

IPR Method Vogel
 PBHP/SBHP - * -
 Production Efficiency 0.0

Oil 40 deg.API
 Water 1.05 Sp.Gr.H2O
 Gas 0.86 Sp.Gr.AIR

Acoustic Velocity 1121.46 ft/s

Formation Submergence
 Total Gaseous Liquid Column HT (TVD) 2581 ft
 Equivalent Gas Free Liquid HT (TVD) 2581 ft

Acoustic Test

Casing Pressure 0.7 psi (g)
 Casing Pressure Buildup -0.0 psi
 1.00 min
 Gas/Liquid Interface Pressure 1.7 psi (g)

Liquid Level Depth 2093.21 ft

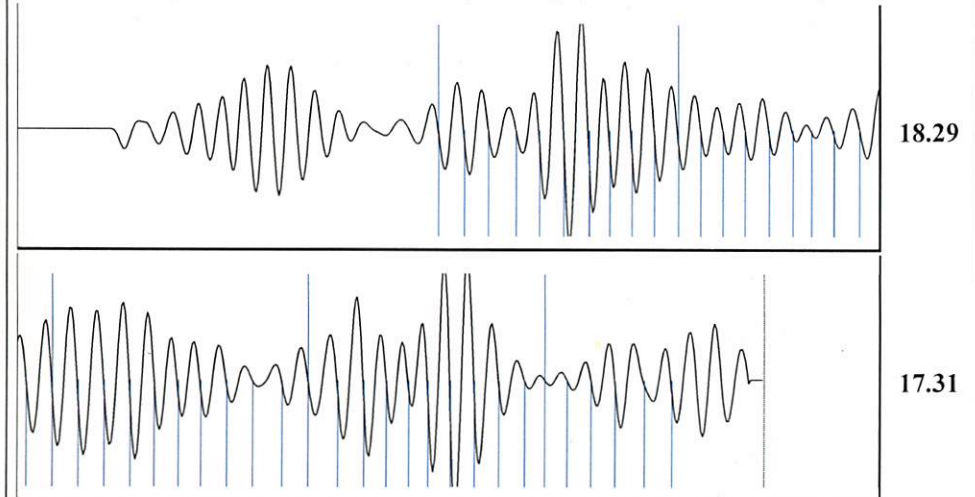
Pump Intake Depth 4674.00 ft
 Formation Depth 4670.00 ft



Producing
 Annular Gas Flow 0 Mscf/D
 % Liquid 100 %

Pump Intake 855.5 psi (g)
 Producing BHP 854.2 psi (g)
 Static BHP - * - psi (g)

Group: 3G Production, LLC Well: Peoples Bank (acquired on: 03/13/24 15:47:20)



Acoustic Velocity 1121.46 ft/s Joints counted 45
 Joints Per Second 17.6887 jts/sec Joints to liquid level 66.0318
 Depth to liquid level 2093.21 ft Filter Width 15.1821 19.1821
 Automatic Collar Count Yes Time to 1st Collar 0.972 3.516

03/14/2024

Kenneth C Gates
3G Production, LLC
10387 NE SR 61
PO BOX 847
PRATT, KS 67124-0847

Re: Temporary Abandonment
API 15-151-21463-00-00
PEOPLES BANK-HUGHES 1
SW/4 Sec.19-28S-15W
Pratt County, Kansas

Dear Kenneth C Gates:

"Your temporary abandonment (TA) application for the well listed above has been approved. In accordance with K.A.R. 82-3-111 the TA status of this well will expire 03/14/2025.

- * If you return this well to service or plug it, please notify the District Office.
- * If you sell this well you are required to file a Transfer of Operator form, T-1.
- * If the well will remain temporarily abandoned, you must submit a new TA application, CP-111, before 03/14/2025.

You may contact me at the number above if you have questions.

Very truly yours,

Michael Maier"