

KANSAS CORPORATION COMMISSION
OIL & GAS CONSERVATION DIVISION

TEMPORARY ABANDONMENT WELL APPLICATION

OPERATOR: License# \_\_\_\_\_
Name: \_\_\_\_\_
Address 1: \_\_\_\_\_
Address 2: \_\_\_\_\_
City: \_\_\_\_\_ State: \_\_\_\_\_ Zip: \_\_\_\_\_ + \_\_\_\_\_
Contact Person: \_\_\_\_\_
Phone:( \_\_\_\_\_ ) \_\_\_\_\_
Contact Person Email: \_\_\_\_\_
Field Contact Person: \_\_\_\_\_
Field Contact Person Phone: ( \_\_\_\_\_ ) \_\_\_\_\_

API No. 15- \_\_\_\_\_
Spot Description: \_\_\_\_\_
Sec. \_\_\_\_\_ Twp. \_\_\_\_\_ S. R. \_\_\_\_\_ E \_\_\_\_\_ W \_\_\_\_\_
feet from \_\_\_\_\_ N / \_\_\_\_\_ S Line of Section
feet from \_\_\_\_\_ E / \_\_\_\_\_ W Line of Section
GPS Location: Lat: \_\_\_\_\_, Long: \_\_\_\_\_
Datum: \_\_\_\_\_ NAD27 \_\_\_\_\_ NAD83 \_\_\_\_\_ WGS84
County: \_\_\_\_\_ Elevation: \_\_\_\_\_ GL \_\_\_\_\_ KB
Lease Name: \_\_\_\_\_ Well #: \_\_\_\_\_
Well Type: (check one) \_\_\_\_\_ Oil \_\_\_\_\_ Gas \_\_\_\_\_ OG \_\_\_\_\_ WSW \_\_\_\_\_ Other: \_\_\_\_\_
\_\_\_\_\_ SWD Permit #: \_\_\_\_\_ ENHR Permit #: \_\_\_\_\_
\_\_\_\_\_ Gas Storage Permit #: \_\_\_\_\_
Spud Date: \_\_\_\_\_ Date Shut-In: \_\_\_\_\_

Table with 7 columns: Conductor, Surface, Production, Intermediate, Liner, Tubing. Rows include Size, Setting Depth, Amount of Cement, Top of Cement, Bottom of Cement.

Casing Fluid Level from Surface: \_\_\_\_\_ How Determined? \_\_\_\_\_ Date: \_\_\_\_\_
Casing Squeeze(s): \_\_\_\_\_ to \_\_\_\_\_ w / \_\_\_\_\_ sacks of cement, \_\_\_\_\_ to \_\_\_\_\_ w / \_\_\_\_\_ sacks of cement. Date: \_\_\_\_\_
Do you have a valid Oil & Gas Lease? \_\_\_\_\_ Yes \_\_\_\_\_ No
Depth and Type: \_\_\_\_\_ Junk in Hole at \_\_\_\_\_ Tools in Hole at \_\_\_\_\_ Casing Leaks: \_\_\_\_\_ Yes \_\_\_\_\_ No Depth of casing leak(s): \_\_\_\_\_
Type Completion: \_\_\_\_\_ ALT. I \_\_\_\_\_ ALT. II Depth of: \_\_\_\_\_ DV Tool: \_\_\_\_\_ w / \_\_\_\_\_ sacks of cement \_\_\_\_\_ Port Collar: \_\_\_\_\_ w / \_\_\_\_\_ sack of cement
Packer Type: \_\_\_\_\_ Size: \_\_\_\_\_ Inch Set at: \_\_\_\_\_ Feet
Total Depth: \_\_\_\_\_ Plug Back Depth: \_\_\_\_\_ Plug Back Method: \_\_\_\_\_

Geological Data:

Table with 4 columns: Formation Name, Formation Top, Formation Base, Completion Information. Rows 1 and 2.

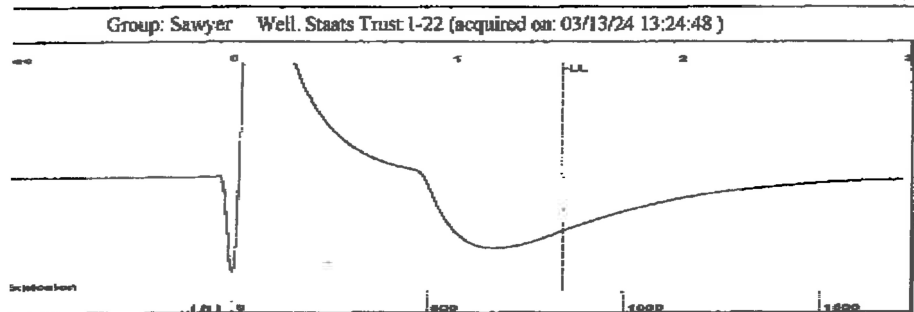
UNDER PENALTY OF PERJURY I HEREBY ATTEST THAT THE INFORMATION CONTAINED HEREIN IS TRUE AND CORRECT TO THE BEST OF MY KNOWLEDGE

Submitted Electronically

Do NOT Write in This Space - KCC USE ONLY
Date Tested: \_\_\_\_\_ Results: \_\_\_\_\_ Date Plugged: \_\_\_\_\_ Date Repaired: \_\_\_\_\_ Date Put Back in Service: \_\_\_\_\_
Review Completed by: \_\_\_\_\_ Comments: \_\_\_\_\_
TA Approved: \_\_\_\_\_ Yes \_\_\_\_\_ Denied Date: \_\_\_\_\_

Mail to the Appropriate KCC Conservation Office:

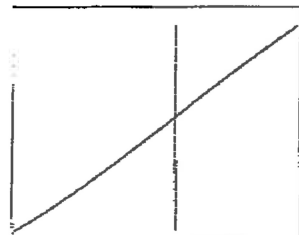
Table with 3 columns: District Office, Address, Phone. Rows for District Office #1, #2, #3, #4.



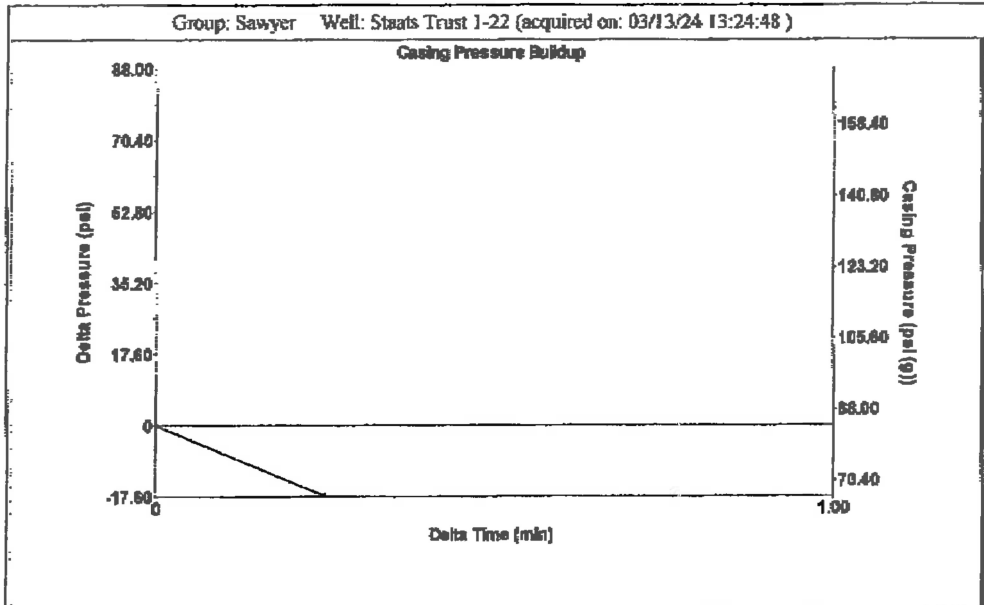
Time 1.471 sec  
 Joints 26.219 Jts  
 Depth 845.83 ft

Liquid level calculated with user supplied Acoustic Velocity

Acoustic Velocity 1150 ft/s



**Analysis Method: Acoustic Velocity**



Change in Pressure -17.49 psi PT13440  
 Range 0 - 9 psi  
 Change in Time 0.25 min

Group: Sawyer Well: Staats Trust 1-22 (acquired on: 03/13/24 13:24:48 )

Production	Potential	Casing Pressure		Producing
Current	-*- BBL/D	84.1 psi (g)		
	-*- BBL/D	Casing Pressure Buildup		
	-*- Mscf/D	-17.493 psi		Annular
Method	Vogel	0.25 min		Gas Flow
P/SBHP	-*-	Gas/Liquid Interface Pressure		0 Mscf/D
Production Efficiency	0.0	86.6 psi (g)		% Liquid
		Liquid Level Depth		100 %
	40 deg.API	845.83 ft		
	1.05 Sp.Gr.H2O	Pump Intake Depth		
	0.84 Sp.Gr.AIR	3968.00 ft		
Acoustic Velocity	1150 ft/s	Formation Depth		
		3822.00 ft		
Production Submergence		Pump Intake		
1 Gaseous Liquid Column HT (TVD)	3122 ft	1102.7 psi (g)		
1 Gaseous Free Liquid HT (TVD)	3122 ft	Producing BHP		
		1058.2 psi (g)		
		Static BHP		
		-*- psi (g)		

Group: Sawyer Well: Staats Trust 1-22 (acquired on: 03/13/24 13:24:48 )

Entered Acoustic Velocity for Liquid Level depth determination

Conservation Division  
District Office No. 1  
210 E. Frontview, Suite A  
Dodge City, KS 67801



Phone: 620-682-7933  
<http://kcc.ks.gov/>

Andrew J. French, Chairperson  
Dwight D. Keen, Commissioner  
Annie Kuether, Commissioner

Laura Kelly, Governor

03/19/2024

Loveness Mpanje  
F. G. Holl Company L.L.C.  
9431 E CENTRAL STE 100  
WICHITA, KS 67206-2563

Re: Temporary Abandonment  
API 15-007-23012-00-00  
STAATS TRUST 1-22  
NW/4 Sec.22-30S-14W  
Barber County, Kansas

Dear Loveness Mpanje:

"Your temporary abandonment (TA) application for the well listed above has been approved. In accordance with K.A.R. 82-3-111 the TA status of this well will expire 03/19/2025.

- \* If you return this well to service or plug it, please notify the District Office.
- \* If you sell this well you are required to file a Transfer of Operator form, T-1.
- \* If the well will remain temporarily abandoned, you must submit a new TA application, CP-111, before 03/19/2025.

You may contact me at the number above if you have questions.

Very truly yours,

Michael Maier"