

KANSAS CORPORATION COMMISSION
OIL & GAS CONSERVATION DIVISION

Form must be Typed
Form must be signed

TEMPORARY ABANDONMENT WELL APPLICATION

All blanks must be complete

OPERATOR: License#
Name:
Address 1:
Address 2:
City: State: Zip:
Contact Person:
Phone:
Contact Person Email:
Field Contact Person:
Field Contact Person Phone:

API No. 15-
Spot Description:
Sec. Twp. S. R.
feet from N / S Line of Section
feet from E / W Line of Section
GPS Location: Lat: , Long:
Datum: NAD27 NAD83 WGS84
County: Elevation: GL KB
Lease Name: Well #:
Well Type: (check one) Oil Gas OG WSW Other:
SWD Permit #: ENHR Permit #:
Gas Storage Permit #:
Spud Date: Date Shut-In:

Table with 7 columns: Conductor, Surface, Production, Intermediate, Liner, Tubing. Rows include Size, Setting Depth, Amount of Cement, Top of Cement, Bottom of Cement.

Casing Fluid Level from Surface: How Determined? Date:
Casing Squeeze(s): to w / sacks of cement, to w / sacks of cement. Date:
Do you have a valid Oil & Gas Lease? Yes No
Depth and Type: Junk in Hole at Tools in Hole at Casing Leaks: Yes No Depth of casing leak(s):
Type Completion: ALT. I ALT. II Depth of: DV Tool: w / sacks of cement Port Collar: w / sack of cement
Packer Type: Size: Inch Set at: Feet
Total Depth: Plug Back Depth: Plug Back Method:

Geological Data:

Table with 4 columns: Formation Name, Formation Top, Formation Base, Completion Information. Rows 1 and 2.

UNDER PENALTY OF PERJURY I HEREBY ATTEST THAT THE INFORMATION CONTAINED HEREIN IS TRUE AND CORRECT TO THE BEST OF MY KNOWLEDGE

Submitted Electronically

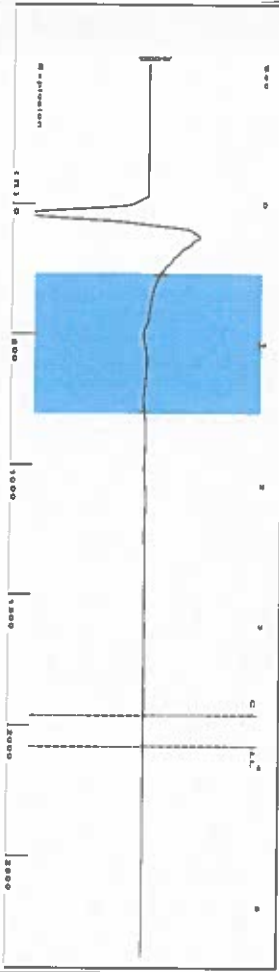
Do NOT Write in This Space - KCC USE ONLY
Date Tested: Results: Date Plugged: Date Repaired: Date Put Back in Service:
Review Completed by: Comments:
TA Approved: Yes Denied Date:

Mail to the Appropriate KCC Conservation Office:

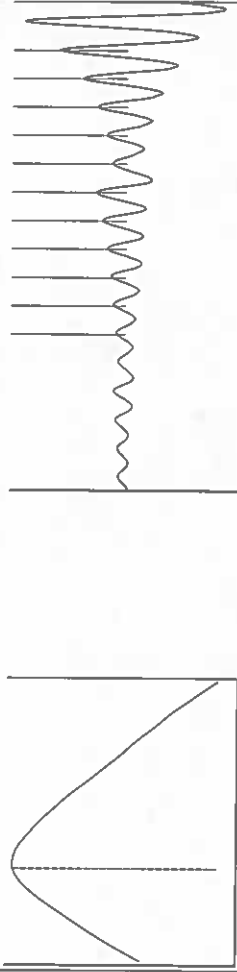
Table with 3 columns: District Office, Address, Phone. Rows for District Office #1, #2, #3, #4.

Shot @ 500# JK

Group: Liberal Wells Well: Printz B-1 (acquired on: 03/21/24 11:26:55)



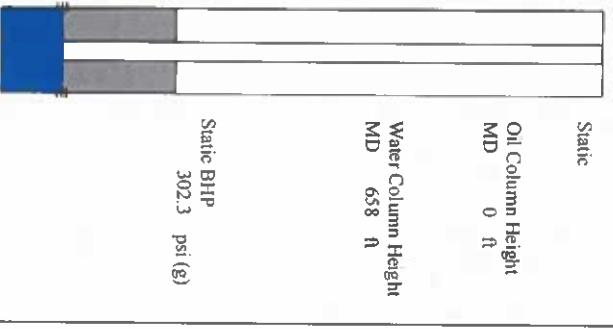
Filter Type High Pass Automatic Collar Count Yes
 Manual Acoustic Velocity 1089.35 N/s Manual JTS/sec 17.1821
 Time 3.858 sec
 Joints 65.6828 Jts
 Depth 2082.14 ft



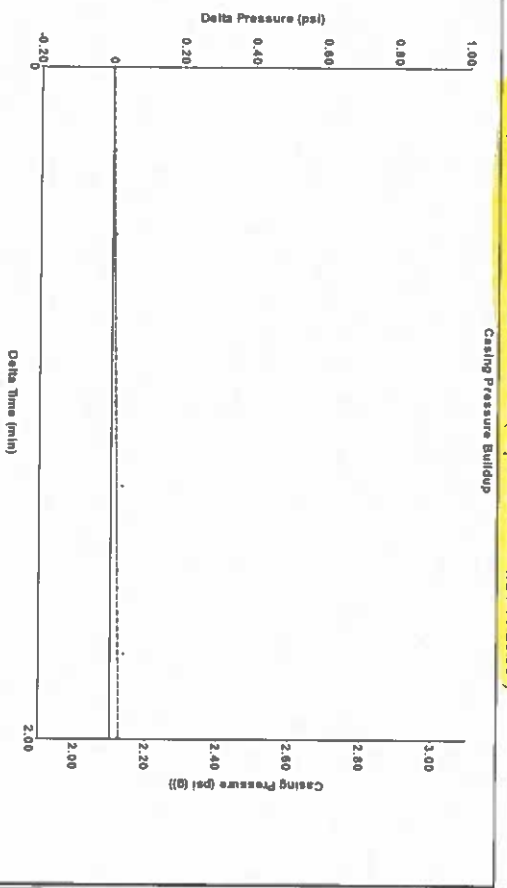
Analysis Method: Automatic

Group: Liberal Wells Well: Printz B-1 (acquired on: 03/21/24 11:26:55)

Production	Potential	Casing Pressure	Static
Current	BB/LD	2.1 psi (g)	Oil Column Height
Oil	BB/LD	Casing Pressure Buildup	MD 0 ft
Water	Mscf/D	0.025 psi	Water Column Height
Gas	Mscf/D	2.00 min	MD 658 ft
IPR Method	Vogel	Gas/Liquid Interface Pressure	
PBHP/SBHP	0.0	3.2 psi (g)	
Production Efficiency			
Oil 40 deg API		Liquid Level Depth	
Water 1.05 Sp.Gr.H2O		2082.14 ft	
Gas 0.91 Sp.Gr.AIR		Pump Intake Depth	
Acoustic Velocity		2733.00 ft	
		Formation Depth	
		2740.00 ft	

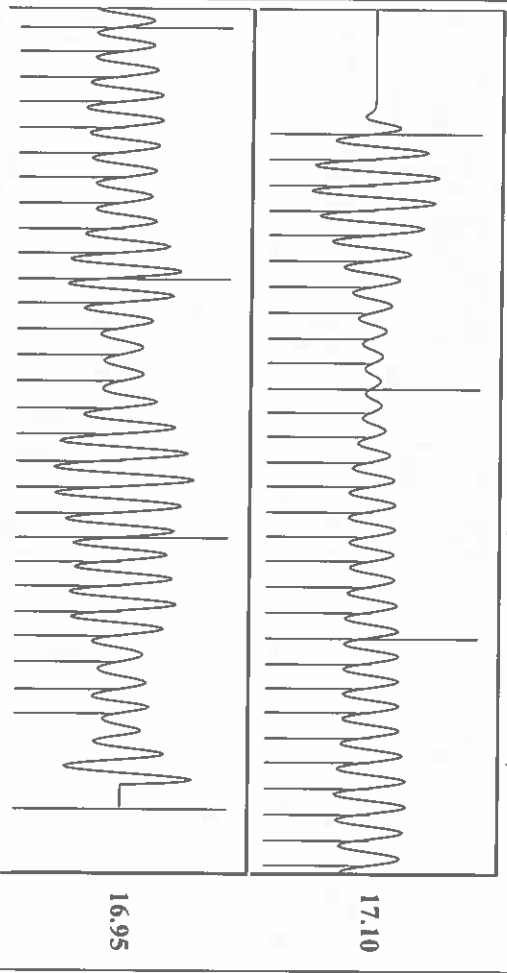


Group: Liberal Wells Well: Printz B-1 (acquired on 03/21/24 11:26:55)



Change in Pressure 0.03 psi PT 11249
 Change in Time 2.00 min Range 0 - ? psi

Group: Liberal Wells Well: Printz B-1 (acquired on: 03/21/24 11:26:55)



Acoustic Velocity	1079.39 ft/s	Joints counted	57
Joints Per Second	17.0251	Joints to liquid level	65.6828
Depth to liquid level	2082.14 ft	Filter Width	15.1821
Automatic Collar Count	Yes	Time to 1st Collar	0.288
			19.1821
			3.636

03/22/2024

Katherine McClurkan
Merit Energy Company, LLC
13727 Noel Road, Suite 1200
DALLAS, TX 75240-7362

Re: Temporary Abandonment
API 15-175-21591-00-00
Liberal 2-25
NE/4 Sec.25-34S-34W
Seward County, Kansas

Dear Katherine McClurkan:

"Your temporary abandonment (TA) application for the well listed above has been approved. In accordance with K.A.R. 82-3-111 the TA status of this well will expire 03/22/2025.

- * If you return this well to service or plug it, please notify the District Office.
- * If you sell this well you are required to file a Transfer of Operator form, T-1.
- * If the well will remain temporarily abandoned, you must submit a new TA application, CP-111, before 03/22/2025.

You may contact me at the number above if you have questions.

Very truly yours,

Michael Maier"