

KANSAS CORPORATION COMMISSION
OIL & GAS CONSERVATION DIVISION

TEMPORARY ABANDONMENT WELL APPLICATION

OPERATOR: License#
Name:
Address 1:
Address 2:
City: State: Zip:
Contact Person:
Phone:
Contact Person Email:
Field Contact Person:
Field Contact Person Phone:

API No. 15-
Spot Description:
Sec. Twp. S. R.
GPS Location: Lat: Long:
Datum: NAD27 NAD83 WGS84
County: Elevation:
Lease Name: Well #:
Well Type: Oil Gas OG WSW Other:
SWD Permit #: ENHR Permit #:
Gas Storage Permit #:
Spud Date: Date Shut-In:

Table with 7 columns: Conductor, Surface, Production, Intermediate, Liner, Tubing. Rows include Size, Setting Depth, Amount of Cement, Top of Cement, Bottom of Cement.

Casing Fluid Level from Surface: How Determined? Date:
Casing Squeeze(s): to w / sacks of cement, to w / sacks of cement. Date:
Do you have a valid Oil & Gas Lease? Yes No
Depth and Type: Junk in Hole at Tools in Hole at Casing Leaks: Yes No Depth of casing leak(s):
Type Completion: ALT. I ALT. II Depth of: DV Tool: w / sacks of cement Port Collar: w / sack of cement
Packer Type: Size: Inch Set at: Feet
Total Depth: Plug Back Depth: Plug Back Method:

Geological Data:

Table with 4 columns: Formation Name, Formation Top, Formation Base, Completion Information. Rows 1 and 2.

UNDER PENALTY OF PERJURY I HEREBY ATTEST THAT THE INFORMATION CONTAINED HEREIN IS TRUE AND CORRECT TO THE BEST OF MY KNOWLEDGE

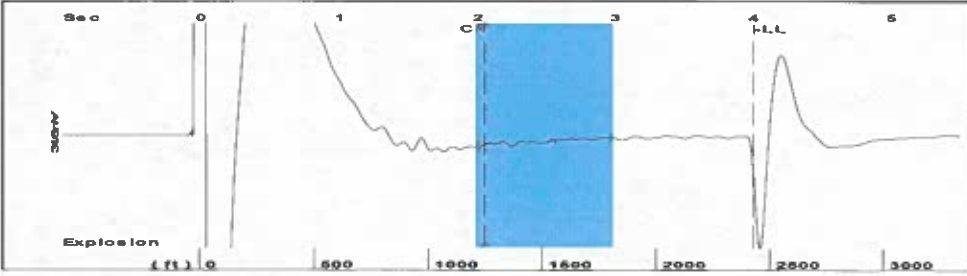
Submitted Electronically

Form with fields: Do NOT Write in This Space - KCC USE ONLY, Date Tested, Results, Date Plugged, Date Repaired, Date Put Back in Service, Review Completed by, Comments, TA Approved: Yes Denied, Date.

Mail to the Appropriate KCC Conservation Office:

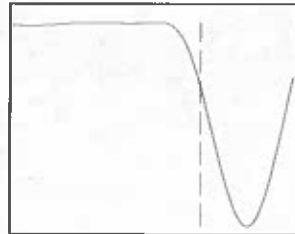
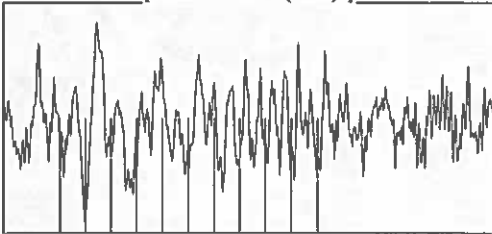
Table with 2 columns: Office Address, Phone. Rows for KCC District Office #1, #2, #3, #4.

Group: TA'D WELLS Well: Barngrover B 1 (acquired on: 03/13/24 11:12:54 )



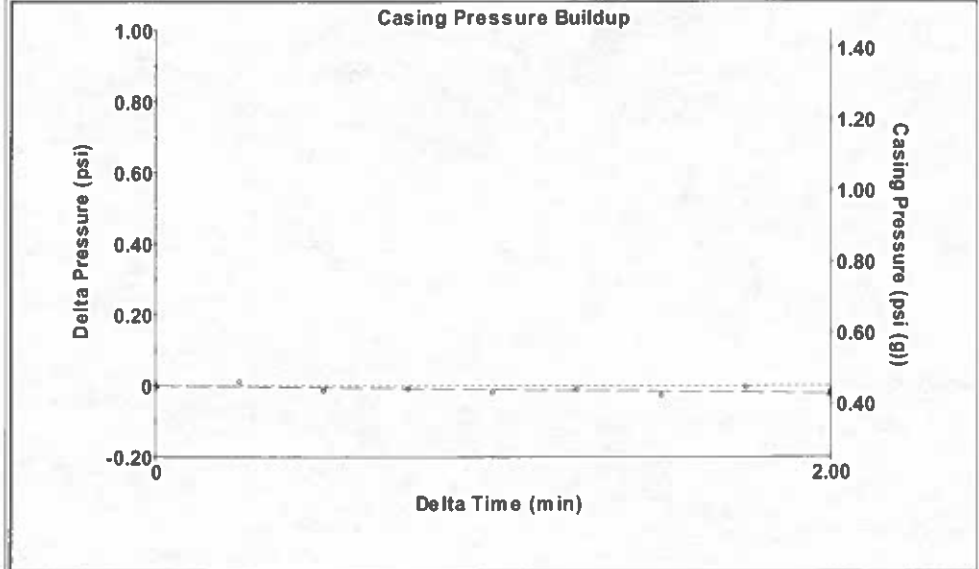
Filter Type High Pass Automatic Collar Count Yes Time 4.007 sec  
 Manual Acoustic Velo 1207.62 ft/s Manual JTS/sec 19.0476 Joints 76.5226 Jts  
 Depth 2425.77 ft

[ 2.0 to 3.0 (Sec) ]



Analysis Method: Automatic

Group: TA'D WELLS Well: Barngrover B 1 (acquired on: 03/13/24 11:12:54 )



Change in Pressure -0.02 psi PT10411  
 Range 0 - ? psi  
 Change in Time 2.00 min

Group: TA'D WELLS Well: Barngrover B 1 (acquired on: 03/13/24 11:12:54 )

Production Current Potential  
 Oil - \* - BBL/D  
 Water - \* - BBL/D  
 Gas - \* - Mscf/D

IPR Method Vogel  
 PBHP/SBHP - \* -  
 Production Efficiency 0.0

Oil 40 deg API  
 Water 1.05 Sp.Gr.H2O  
 Gas 0.79 Sp.Gr.AIR

Acoustic Velocity 1210.76 ft/s

Casing Pressure 0.4 psi (g)  
 Casing Pressure Buildup -0.021 psi  
 2.00 min  
 Gas/Liquid Interface Pressure 1.4 psi (g)

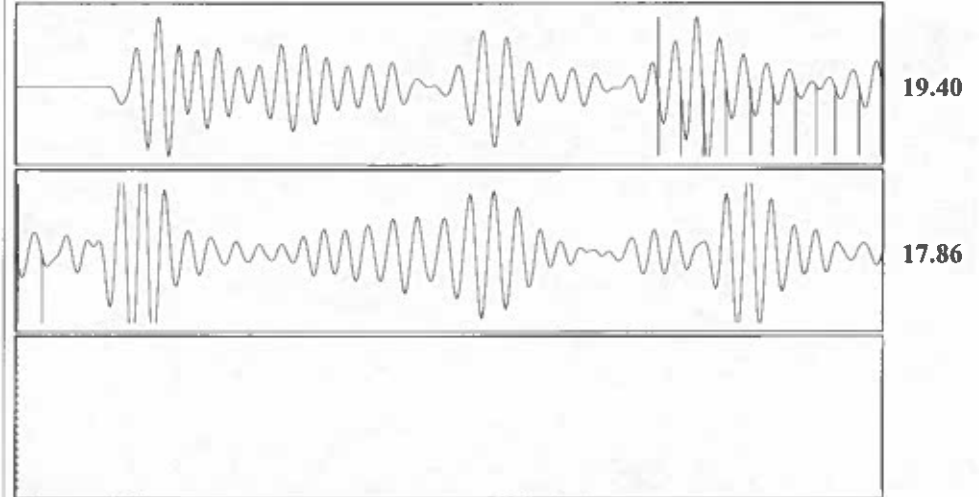
Liquid Level Depth 2425.77 ft  
 Pump Intake Depth 3000.00 ft  
 Formation Depth 2756.00 ft



Producing  
 Annular Gas Flow 0 Mscf/D  
 % Liquid 100 %

Pump Intake 195.6 psi (g)  
 Producing BHP 113.7 psi (g)  
 Static BHP - \* - psi (g)

Group: TA'D WELLS Well: Barngrover B 1 (acquired on: 03/13/24 11:12:54 )



Acoustic Velocity 1210.76 ft/s Joints counted 11  
 Joints Per Second 19.0972 jts/sec Joints to liquid level 76.5226  
 Depth to liquid level 2425.77 ft Filter Width 17.0476 21.0476  
 Automatic Collar Count Yes Time to 1st Collar 1.484 2.06

Conservation Division  
District Office No. 1  
210 E. Frontview, Suite A  
Dodge City, KS 67801



Phone: 620-682-7933  
<http://kcc.ks.gov/>

Andrew J. French, Chairperson  
Dwight D. Keen, Commissioner  
Annie Kuether, Commissioner

Laura Kelly, Governor

03/26/2024

Katherine McClurkan  
Merit Energy Company, LLC  
13727 Noel Road, Suite 1200  
Dallas, TX 75240-7362

Re: Temporary Abandonment  
API 15-129-20152-00-00  
Bangrover B 1  
NW/4 Sec.19-33S-39W  
Morton County, Kansas

Dear Katherine McClurkan:

"Your temporary abandonment (TA) application for the well listed above has been approved. In accordance with K.A.R. 82-3-111 the TA status of this well will expire 03/26/2025.

- \* If you return this well to service or plug it, please notify the District Office.
- \* If you sell this well you are required to file a Transfer of Operator form, T-1.
- \* If the well will remain temporarily abandoned, you must submit a new TA application, CP-111, before 03/26/2025.

You may contact me at the number above if you have questions.

Very truly yours,

Michael Maier"