

KANSAS CORPORATION COMMISSION
OIL & GAS CONSERVATION DIVISION

Form must be Typed
Form must be signed

TEMPORARY ABANDONMENT WELL APPLICATION

All blanks must be complete

OPERATOR: License#
Name:
Address 1:
Address 2:
City: State: Zip:
Contact Person:
Phone:
Contact Person Email:
Field Contact Person:
Field Contact Person Phone:

API No. 15-
Spot Description:
Sec. Twp. S. R.
GPS Location: Lat, Long
Datum: NAD27, NAD83, WGS84
County: Elevation:
Lease Name: Well #:
Well Type: Oil, Gas, OG, WSW, Other
SWD Permit #: ENHR Permit #:
Gas Storage Permit #:
Spud Date: Date Shut-In:

Table with 7 columns: Conductor, Surface, Production, Intermediate, Liner, Tubing. Rows include Size, Setting Depth, Amount of Cement, Top of Cement, Bottom of Cement.

Casing Fluid Level from Surface: How Determined? Date:
Casing Squeeze(s): to w / sacks of cement, to w / sacks of cement. Date:
Do you have a valid Oil & Gas Lease? Yes No
Depth and Type: Junk in Hole at Tools in Hole at Casing Leaks: Yes No Depth of casing leak(s):
Type Completion: ALT. I ALT. II Depth of: DV Tool: w / sacks of cement Port Collar: w / sack of cement
Packer Type: Size: Inch Set at: Feet
Total Depth: Plug Back Depth: Plug Back Method:

Geological Data:

Table with 4 columns: Formation Name, Formation Top, Formation Base, Completion Information. Rows 1 and 2.

UNDER PENALTY OF PERJURY I HEREBY ATTEST THAT THE INFORMATION CONTAINED HEREIN IS TRUE AND CORRECT TO THE BEST OF MY KNOWLEDGE

Submitted Electronically

Do NOT Write in This Space - KCC USE ONLY
Date Tested: Results: Date Plugged: Date Repaired: Date Put Back in Service:
Review Completed by: Comments:
TA Approved: Yes Denied Date:

Mail to the Appropriate KCC Conservation Office:

Table with 3 columns: District Office #, Address, Phone. Rows 1-4.

General

Well ID 120527
 Well LIT Trust 1-14H
 Company Sandridge
 Operator - * -
 Lease Name LIT Trust 1-14H
 Elevation 1258.00 ft
 Production Method Other
 Dataset Description

Comment

Surface Unit

Manufacturer - * -
 Unit Class Conventional
 Unit API Number - * -
 Measured Stroke Length 100.000 in
 Rotation CW
 Counter Balance Effect (Weights Level) - * - Klb
 Weight Of Counter Weights 2000 lb

Prime Mover

Motor Type Electric
 Rated HP - * - HP
 Run Time 24 hr/day
 MFG/Comment - * -

Electric Motor Parameters

Rated Full Load AMPS - * -
 Rated Full Load RPM - * -
 Synchronous RPM 1200
 Voltage - * -
 Hertz 60
 Phase 3
 Power Consumption 5
 Power Demand 8 \$/KW

Tubulars

Tubing OD 2.875 in
 Casing OD 7.000 in
 Average Joint Length 31.500 ft
 Anchor Depth - * - ft
 Kelly Bushing 20.00 ft

Pump

Plunger Diameter - * - in
 Pump Intake Depth 4836.00 ft
 **Total Rod Length < Pump Depth

Polished Rod

Polished Rod Diameter - * - in

Rod String

	Top Taper	Taper 2	Taper 3	Taper 4	Taper 5	Taper 6
Rod Type	- * -	- * -	- * -	- * -	- * -	- * -
Rod Length	- * -	- * -	- * -	- * -	- * -	- * - ft
Rod Diameter	- * -	- * -	- * -	- * -	- * -	- * - in
Rod Weight	0.0	0.0	0.0	0.0	0.0	0.0 lb

Total Rod Length 0
 Total Rod Weight 0.00

Damp Up 0.05
 Damp Down 0.05

Conditions

Pressure

Static BHP 587.6 psi (g)
 Static BHP Method Acoustic
 Static BHP Date 03/27/2024

Producing BHP 471.7 psi (g)
 Producing BHP Method Acoustic
 Producing BHP Date 01/15/2020
 Formation Depth 5310.00 ft

Surface Producing Pressures

Tubing Pressure - * - psi (g)
 Casing Pressure 240.3 psi (g)

Casing Pressure Buildup

Change in Pressure 0.094 psi
 Over Change in Time 1.00 min

Production

Oil Production 0 BBL/D
 Water Production 1 BBL/D
 Gas Production - * - Mscf/D
 Production Date 12/06/2016

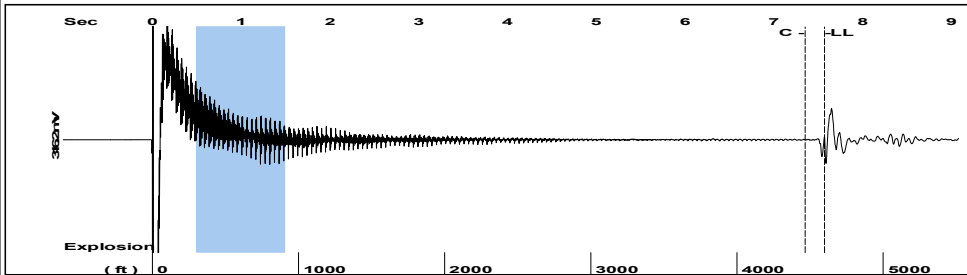
Temperatures

Surface Temperature 70 deg F
 Bottomhole Temperature 150 deg F

Fluid Properties

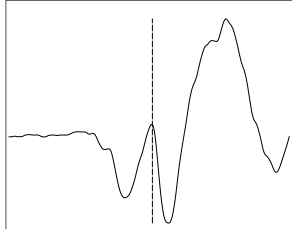
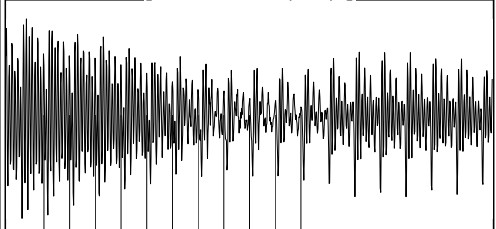
Oil API 40 deg.API
 Water Specific Gravity 1.05 Sp.Gr.H2O

Group: March 2024 Well: LIT Trust 1-14H (acquired on: 03/27/24 12:19:06)



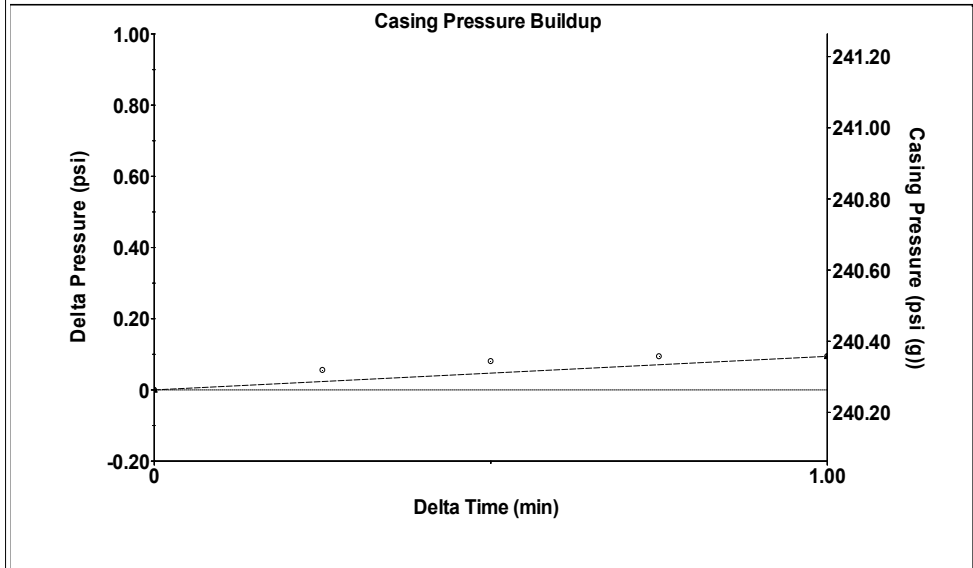
Filter Type High Pass Automatic Collar Count Yes Time 7.57 sec
 Manual Acoustic Veloc 1193.18 ft/s Manual JTS/sec 18.9394 Joints 145.99 Jts
 Depth 4598.68 ft

[0.5 to 1.5 (Sec)]



Analysis Method: Automatic

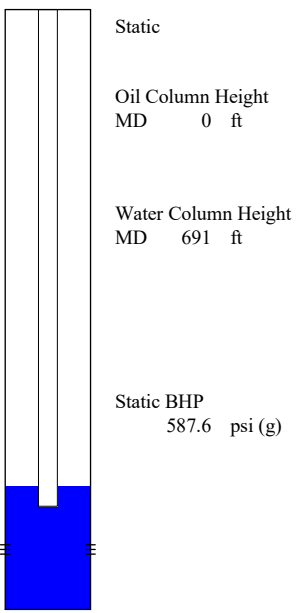
Group: March 2024 Well: LIT Trust 1-14H (acquired on: 03/27/24 12:19:06)



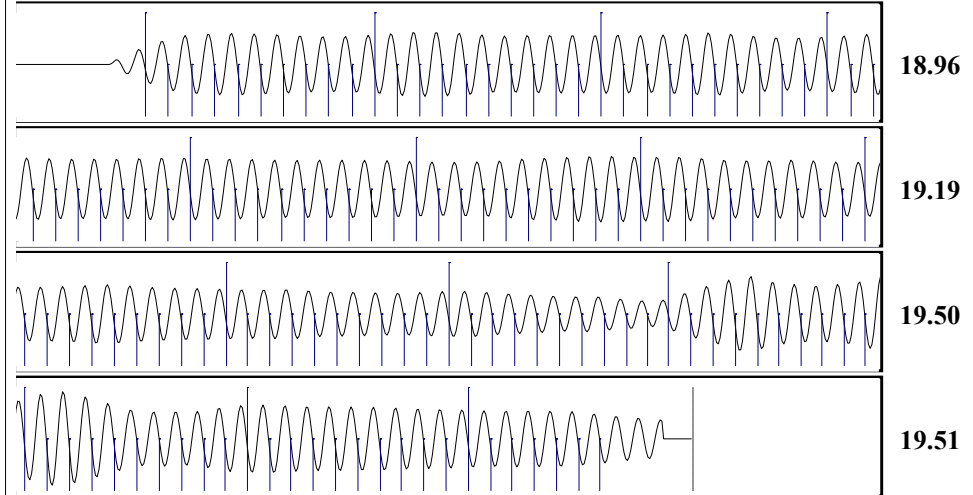
Change in Pressure 0.09 psi PT16722
 Change in Time 1.00 min Range 0 - ? psi

Group: March 2024 Well: LIT Trust 1-14H (acquired on: 03/27/24 12:19:06)

Production		Potential	Casing Pressure
Oil	0	- * - BBL/D	240.3 psi (g)
Water	1	- * - BBL/D	Casing Pressure Buildup
Gas	- * -	- * - Mscf/D	0.094 psi
IPR Method		Vogel	1.00 min
PBHP/SBHP		- * -	Gas/Liquid Interface Pressure
Production Efficiency		0.0	273.3 psi (g)
Oil	40 deg.API	Liquid Level Depth	4598.68 ft
Water	1.05 Sp.Gr.H2O	Tubing Intake Depth	4836.00 ft
Gas	0.75 Sp.Gr.AIR	Formation Depth	5310.00 ft
Acoustic Velocity	1214.97 ft/s		



Group: March 2024 Well: LIT Trust 1-14H (acquired on: 03/27/24 12:19:06)



Acoustic Velocity	1214.97 ft/s	Joints counted	136
Joints Per Second	19.2853 jts/sec	Joints to liquid level	145.99
Depth to liquid level	4598.68 ft	Filter Width	16.9394 20.9394
Automatic Collar Count	Yes	Time to 1st Collar	0.3 7.352

Conservation Division
District Office No. 2
3450 N. Rock Road
Building 600, Suite 601
Wichita, KS 67226



Phone: 316-337-7400
<http://kcc.ks.gov/>

Andrew J. French, Chairperson
Dwight D. Keen, Commissioner
Annie Kuether, Commissioner

Laura Kelly, Governor

04/02/2024

Kristy Johnson
SandRidge Exploration and Production LLC
1 E SHERIDAN AVE STE 500
Oklahoma City, OK 73104-2494

Re: Temporary Abandonment
API 15-077-21796-01-00
LIT TRUST 1-14H
SW/4 Sec.14-35S-08W
Harper County, Kansas

Dear Kristy Johnson:

"Your temporary abandonment (TA) application for the well listed above has been approved. In accordance with K.A.R. 82-3-111 the TA status of this well will expire 04/02/2025.

- * If you return this well to service or plug it, please notify the District Office.
- * If you sell this well you are required to file a Transfer of Operator form, T-1.
- * If the well will remain temporarily abandoned, you must submit a new TA application, CP-111, before 04/02/2025.

You may contact me at the number above if you have questions.

Very truly yours,

Jeff Klock, District Supervisor"