

KANSAS CORPORATION COMMISSION
OIL & GAS CONSERVATION DIVISION

Form must be Typed
Form must be signed

TEMPORARY ABANDONMENT WELL APPLICATION

All blanks must be complete

OPERATOR: License#
Name:
Address 1:
Address 2:
City: State: Zip:
Contact Person:
Phone:
Contact Person Email:
Field Contact Person:
Field Contact Person Phone:

API No. 15-
Spot Description:
Sec. Twp. S. R.
feet from N / S Line of Section
feet from E / W Line of Section
GPS Location: Lat: , Long:
Datum: NAD27 NAD83 WGS84
County: Elevation: GL KB
Lease Name: Well #:
Well Type: Oil Gas OG WSW Other:
SWD Permit #: ENHR Permit #:
Gas Storage Permit #:
Spud Date: Date Shut-In:

Table with 7 columns: Conductor, Surface, Production, Intermediate, Liner, Tubing. Rows include Size, Setting Depth, Amount of Cement, Top of Cement, Bottom of Cement.

Casing Fluid Level from Surface: How Determined? Date:
Casing Squeeze(s): to w / sacks of cement, to w / sacks of cement. Date:
Do you have a valid Oil & Gas Lease? Yes No
Depth and Type: Junk in Hole at Tools in Hole at Casing Leaks: Yes No Depth of casing leak(s):
Type Completion: ALT. I ALT. II Depth of: DV Tool: w / sacks of cement Port Collar: w / sack of cement
Packer Type: Size: Inch Set at: Feet
Total Depth: Plug Back Depth: Plug Back Method:

Geological Date:

Table with 4 columns: Formation Name, Formation Top, Formation Base, Completion Information. Rows 1 and 2.

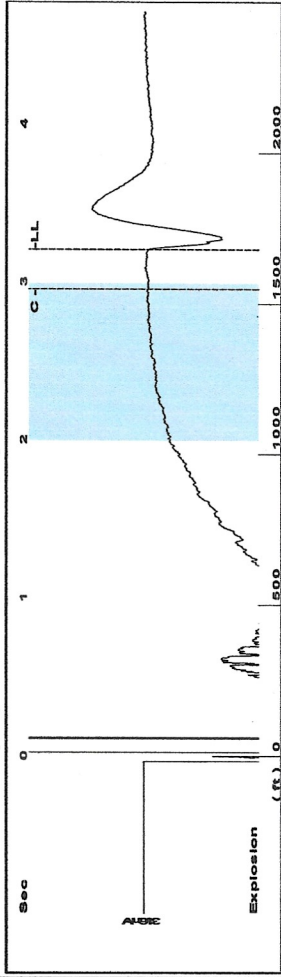
UNDER PENALTY OF PERJURY I HEREBY ATTEST THAT THE INFORMATION CONTAINED HEREIN IS TRUE AND CORRECT TO THE BEST OF MY KNOWLEDGE

Submitted Electronically

Do NOT Write in This Space - KCC USE ONLY
Date Tested: Results: Date Plugged: Date Repaired: Date Put Back in Service:
Review Completed by: Comments:
TA Approved: Yes Denied Date:

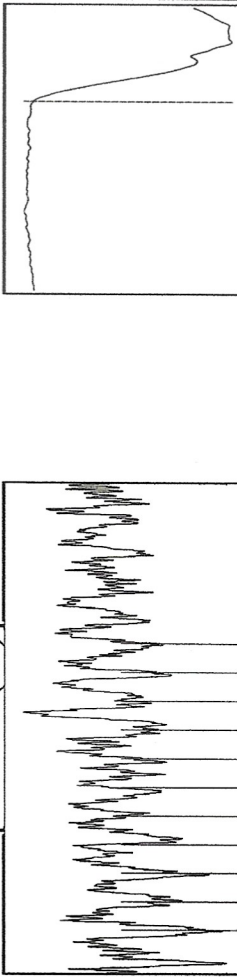
Mail to the Appropriate KCC Conservation Office:

Table with 3 columns: District Office, Address, Phone. Rows for District Office #1, #2, #3, #4.

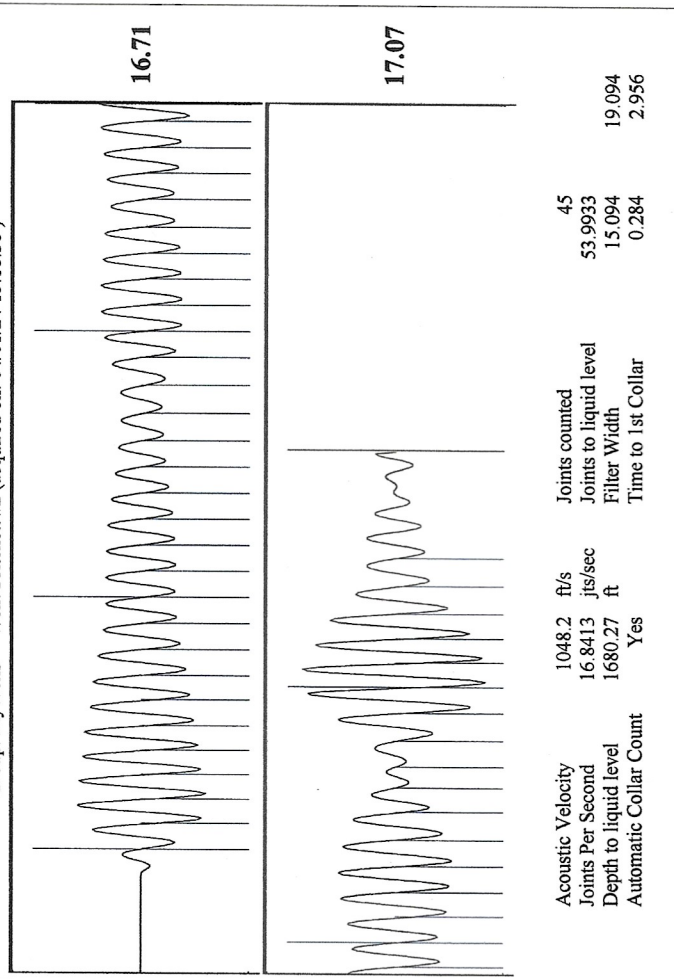
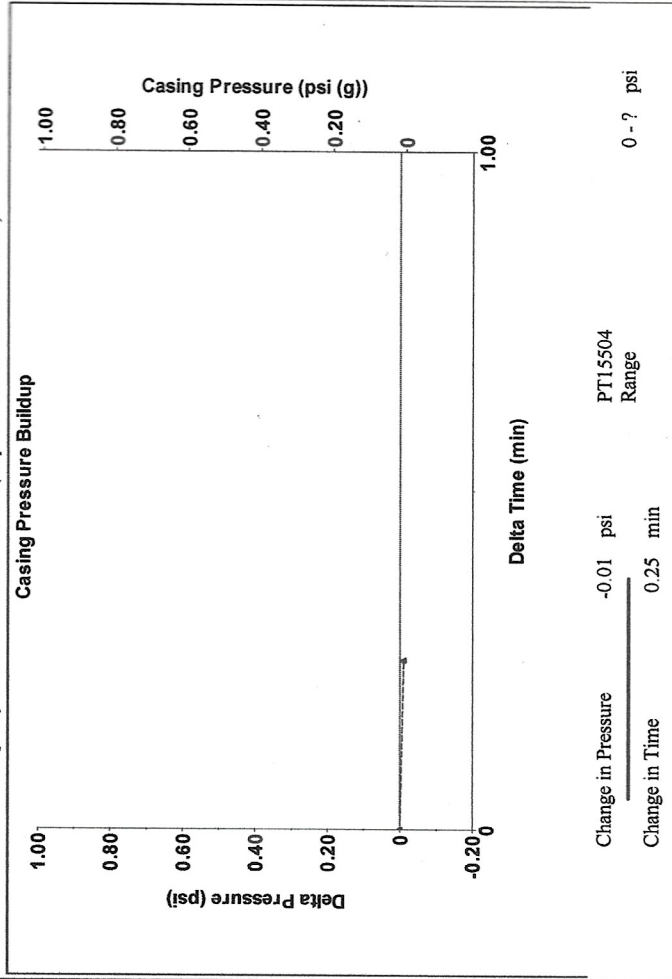
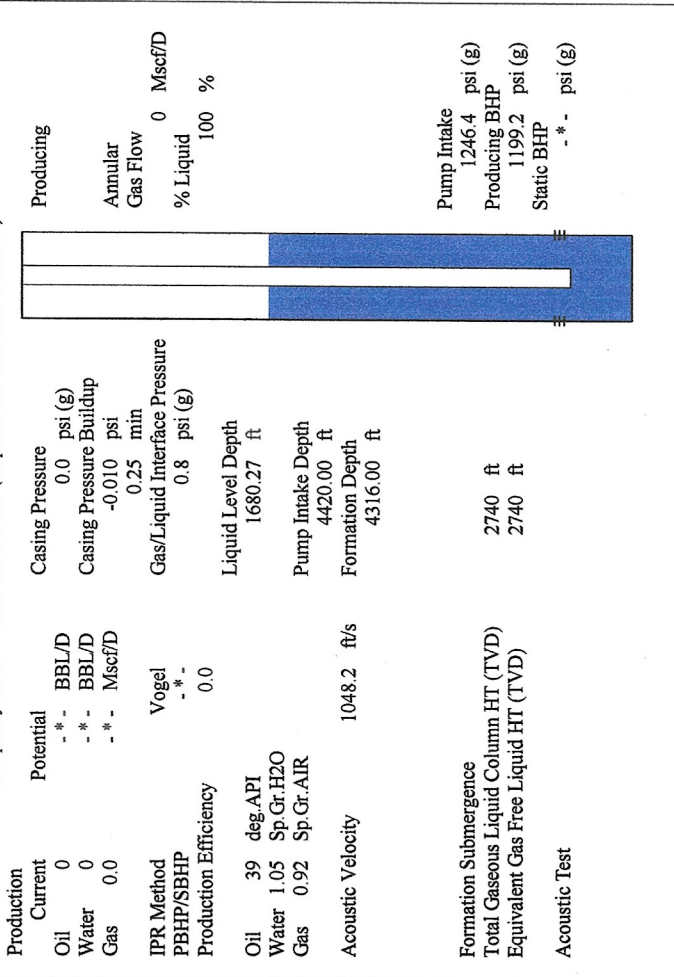


Filter Type High Pass Automatic Collar Count Yes
Manual Acoustic Veloc 063.93 ft/s Manual JTS/sec 17.094

[2.0 to 3.0 (Sec)]



Analysis Method: Automatic



Conservation Division
District Office No. 1
210 E. Frontview, Suite A
Dodge City, KS 67801



Phone: 620-682-7933
<http://kcc.ks.gov/>

Andrew J. French, Chairperson
Dwight D. Keen, Commissioner
Annie Kuether, Commissioner

Laura Kelly, Governor

04/03/2024

Catherine H Stucky
Hartman Oil Co., Inc.
10500 E BERKELEY SQ PKWY STE 100
WICHITA, KS 67206-6816

Re: Temporary Abandonment
API 15-055-20137-00-01
PRITCHETT OWWO 2
NW/4 Sec.04-22S-33W
Finney County, Kansas

Dear Catherine H Stucky:

"Your temporary abandonment (TA) application for the well listed above has been approved. In accordance with K.A.R. 82-3-111 the TA status of this well will expire 04/03/2025.

- * If you return this well to service or plug it, please notify the District Office.
- * If you sell this well you are required to file a Transfer of Operator form, T-1.
- * If the well will remain temporarily abandoned, you must submit a new TA application, CP-111, before 04/03/2025.

You may contact me at the number above if you have questions.

Very truly yours,

Michael Maier"