

KANSAS CORPORATION COMMISSION
OIL & GAS CONSERVATION DIVISION

Form must be Typed
Form must be signed

TEMPORARY ABANDONMENT WELL APPLICATION

All blanks must be complete

OPERATOR: License#
Name:
Address 1:
Address 2:
City: State: Zip:
Contact Person:
Phone:
Contact Person Email:
Field Contact Person:
Field Contact Person Phone:

API No. 15-
Spot Description:
Sec. Twp. S. R.
feet from N / S Line of Section
feet from E / W Line of Section
GPS Location: Lat: , Long:
Datum: NAD27 NAD83 WGS84
County: Elevation: GL KB
Lease Name: Well #:
Well Type: (check one) Oil Gas OG WSW Other:
SWD Permit #: ENHR Permit #:
Gas Storage Permit #:
Spud Date: Date Shut-In:

Table with 7 columns: Conductor, Surface, Production, Intermediate, Liner, Tubing. Rows include Size, Setting Depth, Amount of Cement, Top of Cement, Bottom of Cement.

Casing Fluid Level from Surface: How Determined? Date:
Casing Squeeze(s): to w / sacks of cement, to w / sacks of cement. Date:
Do you have a valid Oil & Gas Lease? Yes No
Depth and Type: Junk in Hole at Tools in Hole at Casing Leaks: Yes No Depth of casing leak(s):
Type Completion: ALT. I ALT. II Depth of: DV Tool: w / sacks of cement Port Collar: w / sack of cement
Packer Type: Size: Inch Set at: Feet
Total Depth: Plug Back Depth: Plug Back Method:

Geological Date:

Table with 4 columns: Formation Name, Formation Top, Formation Base, Completion Information. Rows 1 and 2.

UNDER PENALTY OF PERJURY I HEREBY ATTEST THAT THE INFORMATION CONTAINED HEREIN IS TRUE AND CORRECT TO THE BEST OF MY KNOWLEDGE

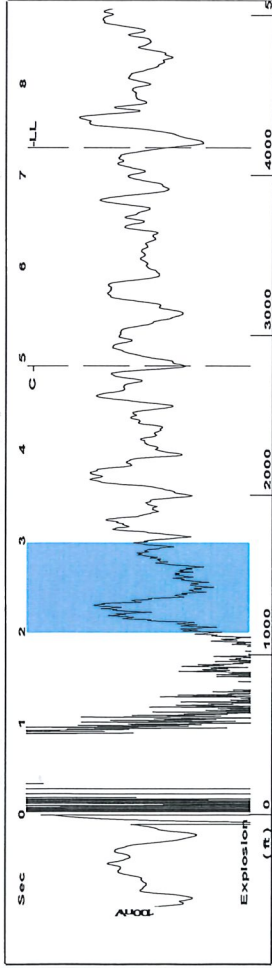
Submitted Electronically

Do NOT Write in This Space - KCC USE ONLY
Date Tested: Results: Date Plugged: Date Repaired: Date Put Back in Service:
Review Completed by: Comments:
TA Approved: Yes Denied Date:

Mail to the Appropriate KCC Conservation Office:

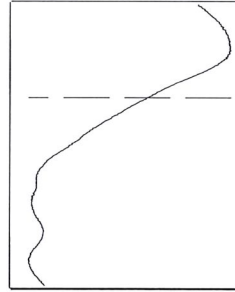
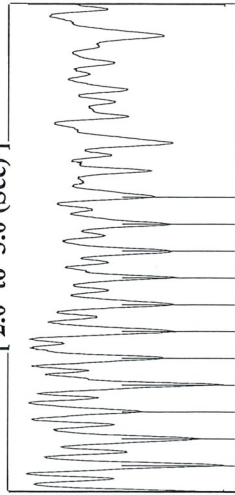
Table with 2 columns: Office Address, Phone. Rows for KCC District Office #1, #2, #3, #4.

Group: MyWells Well: Davis, L Wayne A2 (acquired on: 03/28/24 12:29:34)



Filter Type High Pass Automatic Collar Count Yes Time 7.301 sec
 Manual Acoustic Velo 1148.55 ft/s Manual JTS/sec 18.1159 Joints 131.606 Jts
 Depth 4171.91 ft

[2.0 to 3.0 (Sec)]

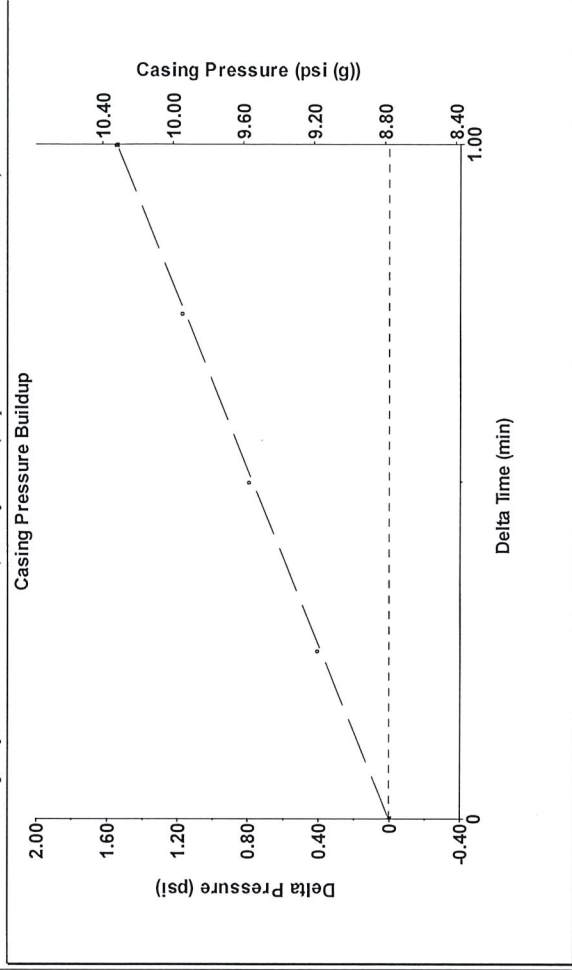


Analysis Method: Automatic

Group: MyWells Well: Davis, L Wayne A2 (acquired on: 03/28/24 12:29:34)

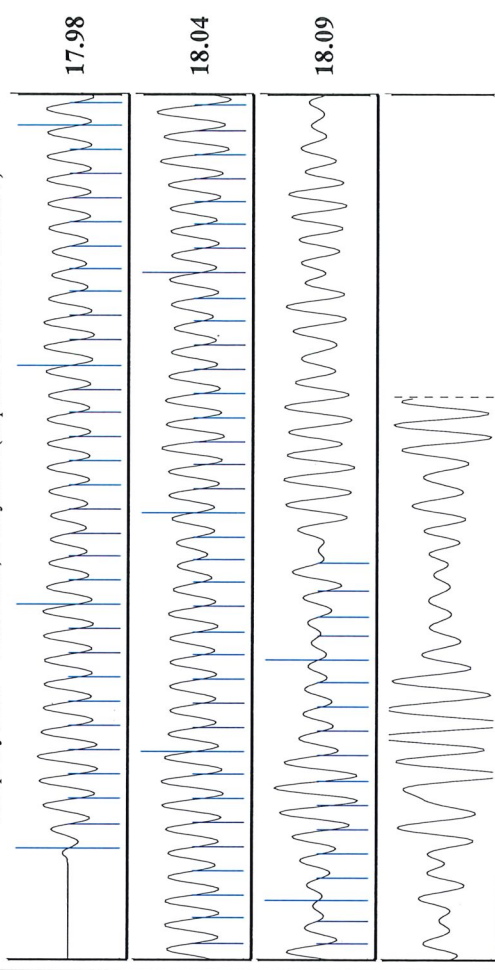
Production Current	0	Potential	8.8 psi (g)	Producing	84 Mscf/D
Oil	0	BBL/D	1.5 psi	Annular Gas Flow	27 %
Water	0	BBL/D	1.00 min	% Liquid	
Gas	5.0	Mscf/D	11.7 psi (g)	Tubing Intake	- * - psi (g)
IPR Method	Vogel	Gas/Liquid Interface Pressure		Producing BHP	72.2 psi (g)
PBHP/SBHP	- * -	Liquid Level Depth	4171.91 ft	Static BHP	- * - psi (g)
Production Efficiency	0.0	Tubing Intake Depth	- * - ft		
Oil	40 deg-API	Formation Depth	4665.00 ft		
Water	1.05 Sp.Gr.H2O				
Gas	0.85 Sp.Gr.AIR				
Acoustic Velocity	1142.83 ft/s				
Formation Submergence					
Total Gaseous Liquid Column HT (TVD)	493 ft				
Equivalent Gas Free Liquid HT (TVD)	132 ft				
Acoustic Test					

Group: MyWells Well: Davis, L Wayne A2 (acquired on: 03/28/24 12:29:34)



Change in Pressure 1.54 psi PT4091 Range
 Change in Time 1.00 min 0 - ? psi

Group: MyWells Well: Davis, L Wayne A2 (acquired on: 03/28/24 12:29:34)



Acoustic Velocity 1142.83 ft/s Joints counted 84
 Joints Per Second 18.0258 jts/sec Joints to liquid level 131.606
 Depth to liquid level 4171.91 ft Filter Width 16.1159
 Automatic Collar Count Yes Time to 1st Collar 0.256 4.916

Conservation Division
District Office No. 1
210 E. Frontview, Suite A
Dodge City, KS 67801



Phone: 620-682-7933
<http://kcc.ks.gov/>

Andrew J. French, Chairperson
Dwight D. Keen, Commissioner
Annie Kuether, Commissioner

Laura Kelly, Governor

04/04/2024

Jon F. Messenger
Messenger Petroleum, Inc.
525 S MAIN ST
KINGMAN, KS 67068-1968

Re: Temporary Abandonment
API 15-007-23141-00-00
L. WAYNE DAVIS "A" 2
NE/4 Sec.12-33S-11W
Barber County, Kansas

Dear Jon F. Messenger:

"Your temporary abandonment (TA) application for the well listed above has been approved. In accordance with K.A.R. 82-3-111 the TA status of this well will expire 04/04/2025.

- * If you return this well to service or plug it, please notify the District Office.
- * If you sell this well you are required to file a Transfer of Operator form, T-1.
- * If the well will remain temporarily abandoned, you must submit a new TA application, CP-111, before 04/04/2025.

You may contact me at the number above if you have questions.

Very truly yours,

Michael Maier"