

KANSAS CORPORATION COMMISSION
OIL & GAS CONSERVATION DIVISION

Form must be Typed
Form must be signed

TEMPORARY ABANDONMENT WELL APPLICATION

All blanks must be complete

OPERATOR: License#
Name:
Address 1:
Address 2:
City: State: Zip:
Contact Person:
Phone:
Contact Person Email:
Field Contact Person:
Field Contact Person Phone:

API No. 15-
Spot Description:
Sec. Twp. S. R.
GPS Location: Lat: Long:
Datum: NAD27 NAD83 WGS84
County: Elevation:
Lease Name: Well #:
Well Type: Oil Gas OG WSW Other:
SWD Permit #: ENHR Permit #:
Gas Storage Permit #:
Spud Date: Date Shut-In:

Table with 7 columns: Conductor, Surface, Production, Intermediate, Liner, Tubing. Rows include Size, Setting Depth, Amount of Cement, Top of Cement, Bottom of Cement.

Casing Fluid Level from Surface: How Determined? Date:
Casing Squeeze(s): to w / sacks of cement, to w / sacks of cement. Date:
Do you have a valid Oil & Gas Lease? Yes No
Depth and Type: Junk in Hole at Tools in Hole at Casing Leaks: Yes No Depth of casing leak(s):
Type Completion: ALT. I ALT. II Depth of: DV Tool: w / sacks of cement Port Collar: w / sack of cement
Packer Type: Size: Inch Set at: Feet
Total Depth: Plug Back Depth: Plug Back Method:

Geological Data:

Table with 4 columns: Formation Name, Formation Top, Formation Base, Completion Information. Rows 1 and 2.

UNDER PENALTY OF PERJURY I HEREBY ATTEST THAT THE INFORMATION CONTAINED HEREIN IS TRUE AND CORRECT TO THE BEST OF MY KNOWLEDGE

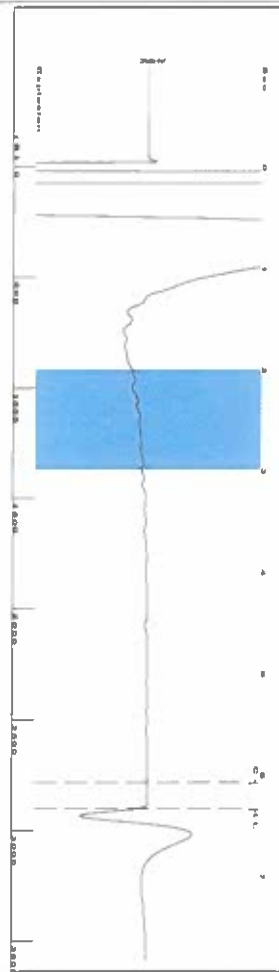
Submitted Electronically

Do NOT Write in This Space - KCC USE ONLY
Date Tested: Results: Date Plugged: Date Repaired: Date Put Back in Service:
Review Completed by: Comments:
TA Approved: Yes Denied Date:

Mail to the Appropriate KCC Conservation Office:

Table with 2 columns: Office Address, Phone. Rows for District Office #1, #2, #3, #4.

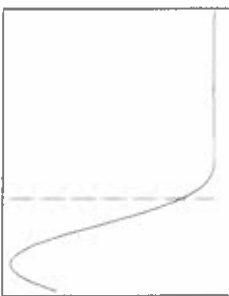
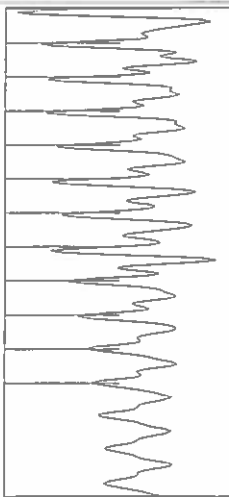
Group: SUBLETTE Well: Hoffman 19-1 (acquired on: 04/04/24 12:35:55)



Filter Type High Pass Automatic Collar Count Yes
 Manual Acoustic Velocity 613 ft/s Manual JTS/sec 14.3472

Time 6.341 sec
 Joints 91.6456 JTS
 Depth 2905.16 ft

12.0 to 3.0 (Sec) 1

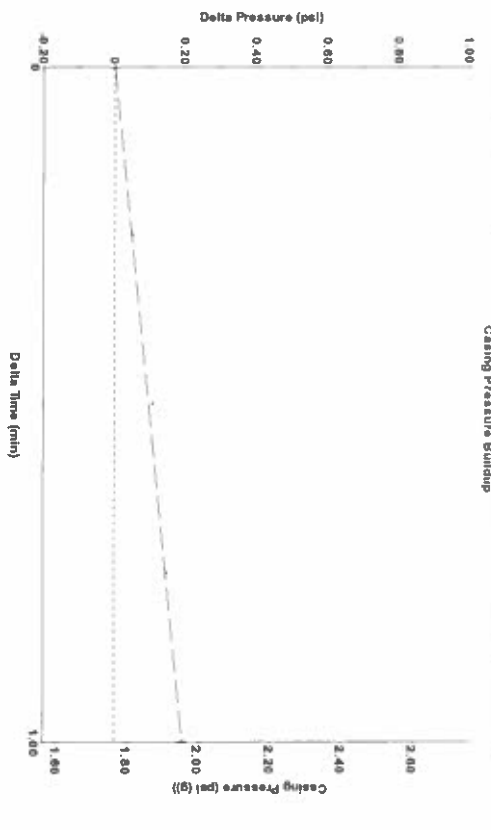


Analysis Method: Automatic

Group: SUBLETTE Well: Hoffman 19-1 (acquired on: 04/04/24 12:35:55)

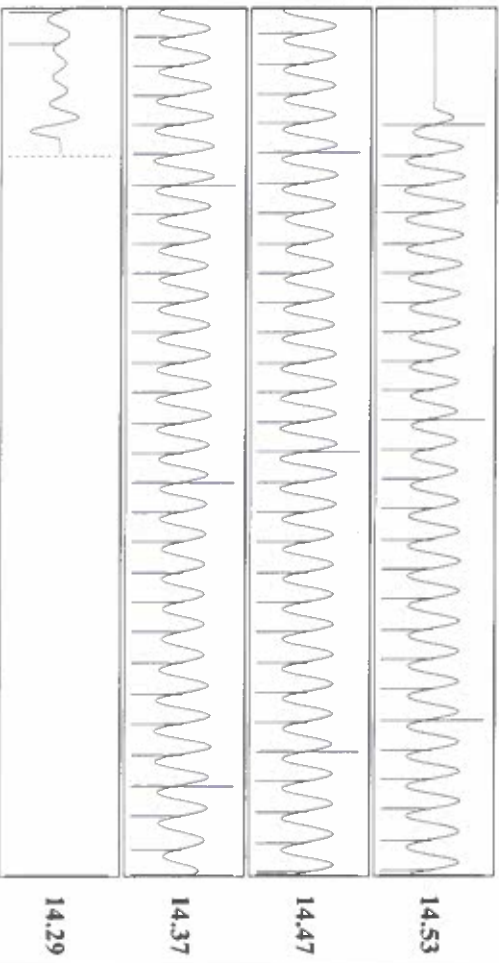
Production	Potential	Casing Pressure	Producing
Current	-*- BBL/D	1.8 psi (g)	Annular
Oil	-*- BBL/D	0.2 psi	Gas Flow
Water	-*- Mscf/D	1.00 min	% Liquid
Gas	-*- Mscf/D	3.6 psi (g)	% Misc/D
IPR Method	Vogel	Gas/Liquid Interface Pressure	
PBII/P/SBHP	-*-	Liquid Level Depth	
Production Efficiency	0.0	2905.16 ft	
Oil	40 deg API	Pump Intake Depth	
Water	1.05 Sp.Gr.H2O	4937.00 ft	
Gas	1.05 Sp.Gr.AIR	Formation Depth	
Acoustic Velocity	916.311 ft/s	4691.00 ft	
Formation Submergence			
Total Gasous Liquid Column HIT (TVD)	2032 ft		
Equivalent Gas Free Liquid HIT (TVD)	1658 ft		
4/4/24			

Group: SUBLETTE Well: Hoffman 19-1 (acquired on: 04/04/24 12:35:55)



Change in Pressure 0.19 psi PT 14679
 Change in Time 1.00 min Range 0 - 2 psi

Group: SUBLETTE Well: Hoffman 19-1 (acquired on: 04/04/24 12:35:55)



Acoustic Velocity	Joints Per Second	Depth to liquid level	Automatic Collar Count	Joints counted	Joints to liquid level	Filter Width	Time to 1st Collar
916.311 ft/s	14.4529 JTS/sec	2905.16 ft	Yes	84	91.6456	12.3472	16.3472
						0.268	6.08

Conservation Division
District Office No. 1
210 E. Frontview, Suite A
Dodge City, KS 67801



Phone: 620-682-7933
<http://kcc.ks.gov/>

Andrew J. French, Chairperson
Dwight D. Keen, Commissioner
Annie Kuether, Commissioner

Laura Kelly, Governor

04/04/2024

Katherine McClurkan
Merit Energy Company, LLC
13727 NOEL ROAD, SUITE 1200
DALLAS, TX 75240-7362

Re: Temporary Abandonment
API 15-081-22151-00-00
Hoffman 19-1
NE/4 Sec.19-30S-32W
Haskell County, Kansas

Dear Katherine McClurkan:

"Your temporary abandonment (TA) application for the well listed above has been approved. In accordance with K.A.R. 82-3-111 the TA status of this well will expire 04/04/2025.

- * If you return this well to service or plug it, please notify the District Office.
- * If you sell this well you are required to file a Transfer of Operator form, T-1.
- * If the well will remain temporarily abandoned, you must submit a new TA application, CP-111, before 04/04/2025.

You may contact me at the number above if you have questions.

Very truly yours,

Michael Maier"