

KANSAS CORPORATION COMMISSION
OIL & GAS CONSERVATION DIVISION

TEMPORARY ABANDONMENT WELL APPLICATION

OPERATOR: License#
Name:
Address 1:
Address 2:
City: State: Zip:
Contact Person:
Phone:
Contact Person Email:
Field Contact Person:
Field Contact Person Phone:

API No. 15-
Spot Description:
Sec. Twp. S. R.
GPS Location: Lat: Long:
Datum: NAD27 NAD83 WGS84
County: Elevation:
Lease Name: Well #:
Well Type: Oil Gas OG WSW Other:
SWD Permit #: ENHR Permit #:
Gas Storage Permit #:
Spud Date: Date Shut-In:

Table with 7 columns: Conductor, Surface, Production, Intermediate, Liner, Tubing. Rows include Size, Setting Depth, Amount of Cement, Top of Cement, Bottom of Cement.

Casing Fluid Level from Surface: How Determined? Date:
Casing Squeeze(s): to w / sacks of cement, to w / sacks of cement. Date:
Do you have a valid Oil & Gas Lease? Yes No
Depth and Type: Junk in Hole at Tools in Hole at Casing Leaks: Yes No Depth of casing leak(s):
Type Completion: ALT. I ALT. II Depth of: DV Tool: w / sacks of cement Port Collar: w / sack of cement
Packer Type: Size: Inch Set at: Feet
Total Depth: Plug Back Depth: Plug Back Method:

Geological Data:

Table with 4 columns: Formation Name, Formation Top, Formation Base, Completion Information. Rows 1 and 2.

UNDER PENALTY OF PERJURY I HEREBY ATTEST THAT THE INFORMATION CONTAINED HEREIN IS TRUE AND CORRECT TO THE BEST OF MY KNOWLEDGE

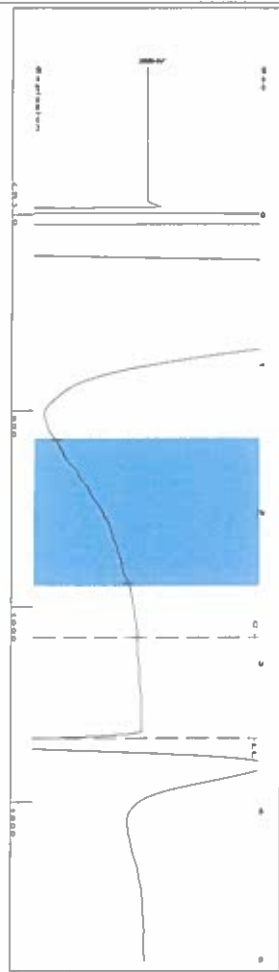
Submitted Electronically

Form with fields: Do NOT Write in This Space - KCC USE ONLY, Date Tested, Results, Date Plugged, Date Repaired, Date Put Back in Service, Review Completed by, Comments, TA Approved: Yes Denied, Date.

Mail to the Appropriate KCC Conservation Office:

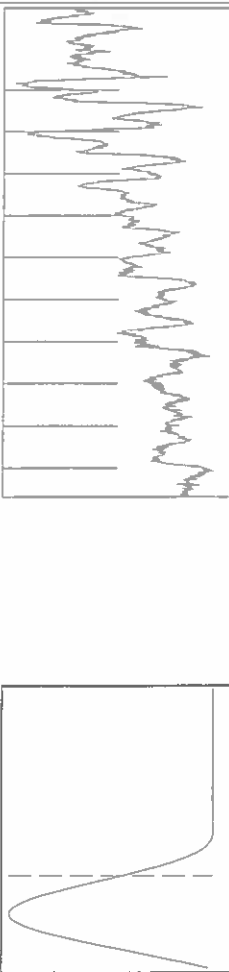
Table with 2 columns: Office Address, Phone. Rows for District Office #1, #2, #3, #4.

Group: SUBLETTE Well: Mabel 1-21 (acquired on: 04/04/24 10:37:10)



Filter Type High Pass Automatic Collar Count Yes
 Manual Acoustic Velo 736.353 ft/s Manual JTS/sec 11.6144
 Time 3.51 sec
 Joints 42.1398 Jis
 Depth 1335.83 ft

[1.5 to 2.5 (Sec)]

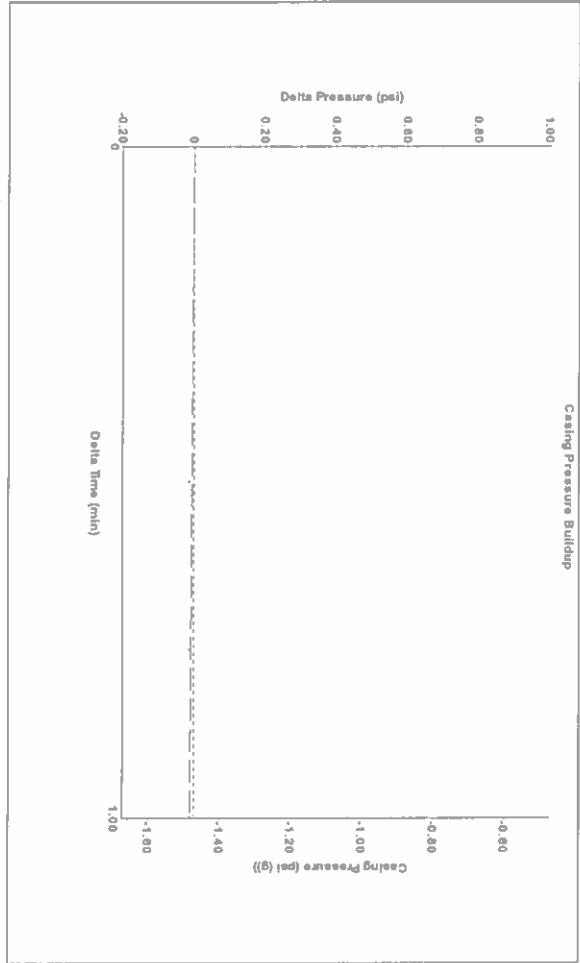


Analysis Method: Automatic

Group: SUBLETTE Well: Mabel 1-21 (acquired on: 04/04/24 10:37:10)

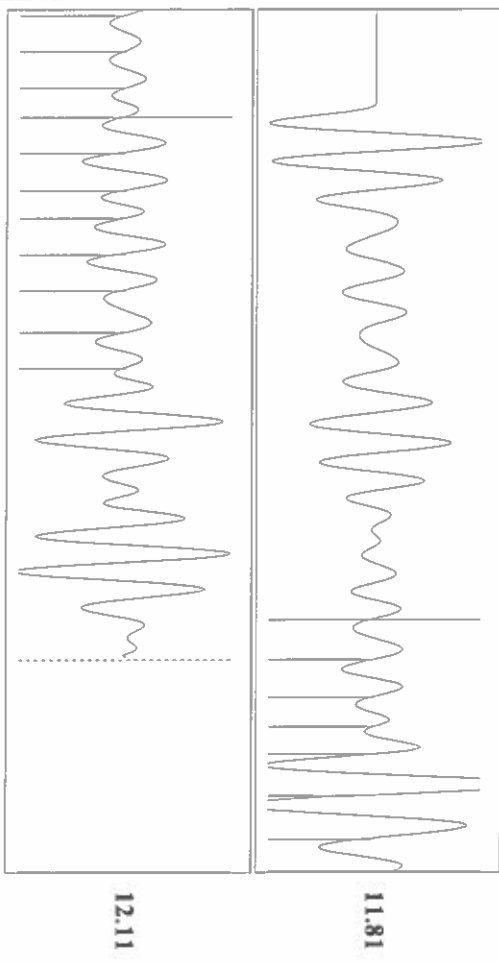
Production	Potential	Casing Pressure	Producing
Oil -*- Water -*- Gas -*-	-*- BBL/D -*- BBL/D -*- Mscf/D	-1.5 psi (g) Casing Pressure Buildup -0.011 psi	Annular Gas Flow -*- Mscf/D % Liquid 100 %
IPR Method PBHP/SBHP Production Efficiency	Vogel -*- 0.0	Gas/Liquid Interface Pressure -0.7 psi (g)	
Oil 40 deg API Water 1.05 Sp.Gr.1120 Gas 1.19 Sp.Gr.AIR	Liquid Level Depth 1335.83 ft	Pump Intake Depth -*- ft Formation Depth 4246.00 ft	Pump Intake -*- psi (g) Producing BHP 1322.4 psi (g) Static BHP -*- psi (g)
Acoustic Velocity 761.158 ft/s			
Formation Submergence Total Gaseous Liquid Column HIT (TVD) Equivalent Gas Free Liquid HIT (TVD)			
4/4/24			

Group: SUBLETTE Well: Mabel 1-21 (acquired on: 04/04/24 10:37:10)



Change in Pressure -0.01 psi PT 14679
 Change in Time 1.00 min Range 0 - ? psi

Group: SUBLETTE Well: Mabel 1-21 (acquired on: 04/04/24 10:37:10)



Acoustic Velocity 761.158 ft/s Joints counted 17
 Joints Per Second 12.0056 Jis/sec Joints to liquid level 42.1398
 Depth to liquid level 1335.83 ft Filter Width 9.6144
 Automatic Collar Count Yes Time to 1st Collar 1.416 2.832

Conservation Division
District Office No. 1
210 E. Frontview, Suite A
Dodge City, KS 67801



Phone: 620-682-7933
<http://kcc.ks.gov/>

Andrew J. French, Chairperson
Dwight D. Keen, Commissioner
Annie Kuether, Commissioner

Laura Kelly, Governor

04/04/2024

Katherine McClurkan
Merit Energy Company, LLC
13727 Noel Road, Suite 1200
Dallas, TX 75240

Re: Temporary Abandonment
API 15-081-22147-00-00
Mabel 1-21
NW/4 Sec.21-29S-33W
Haskell County, Kansas

Dear Katherine McClurkan:

"Your temporary abandonment (TA) application for the well listed above has been approved. In accordance with K.A.R. 82-3-111 the TA status of this well will expire 04/04/2025.

- * If you return this well to service or plug it, please notify the District Office.
- * If you sell this well you are required to file a Transfer of Operator form, T-1.
- * If the well will remain temporarily abandoned, you must submit a new TA application, CP-111, before 04/04/2025.

You may contact me at the number above if you have questions.

Very truly yours,

Michael Maier"