

KANSAS CORPORATION COMMISSION
OIL & GAS CONSERVATION DIVISION

TEMPORARY ABANDONMENT WELL APPLICATION

OPERATOR: License#
Name:
Address 1:
Address 2:
City: State: Zip:
Contact Person:
Phone:
Contact Person Email:
Field Contact Person:
Field Contact Person Phone:

API No. 15-
Spot Description:
Sec. Twp. S. R.
GPS Location: Lat: Long:
Datum: NAD27 NAD83 WGS84
County: Elevation:
Lease Name: Well #:
Well Type: Oil Gas OG WSW Other:
SWD Permit #: ENHR Permit #:
Gas Storage Permit #:
Spud Date: Date Shut-In:

Table with 7 columns: Conductor, Surface, Production, Intermediate, Liner, Tubing. Rows include Size, Setting Depth, Amount of Cement, Top of Cement, Bottom of Cement.

Casing Fluid Level from Surface: How Determined? Date:
Casing Squeeze(s): to w / sacks of cement, to w / sacks of cement. Date:
Do you have a valid Oil & Gas Lease? Yes No
Depth and Type: Junk in Hole at Tools in Hole at Casing Leaks: Yes No Depth of casing leak(s):
Type Completion: ALT. I ALT. II Depth of: DV Tool: w / sacks of cement Port Collar: w / sack of cement
Packer Type: Size: Inch Set at: Feet
Total Depth: Plug Back Depth: Plug Back Method:

Geological Data:

Table with 4 columns: Formation Name, Formation Top, Formation Base, Completion Information. Rows 1 and 2.

UNDER PENALTY OF PERJURY I HEREBY ATTEST THAT THE INFORMATION CONTAINED HEREIN IS TRUE AND CORRECT TO THE BEST OF MY KNOWLEDGE

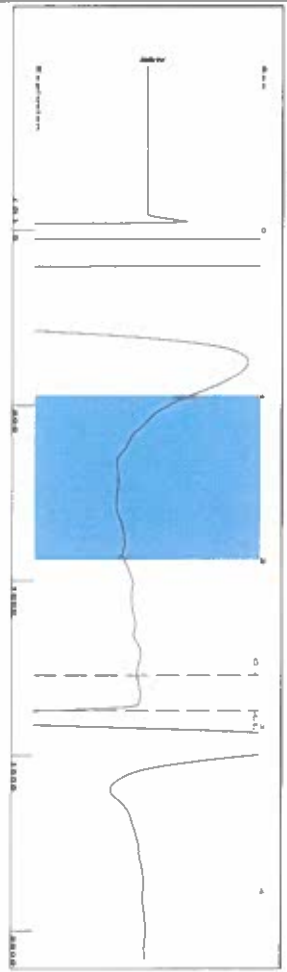
Submitted Electronically

Do NOT Write in This Space - KCC USE ONLY
Date Tested: Results: Date Plugged: Date Repaired: Date Put Back in Service:
Review Completed by: Comments:
TA Approved: Yes Denied Date:

Mail to the Appropriate KCC Conservation Office:

Table with 3 columns: District Office #, Address, Phone. Rows 1-4.

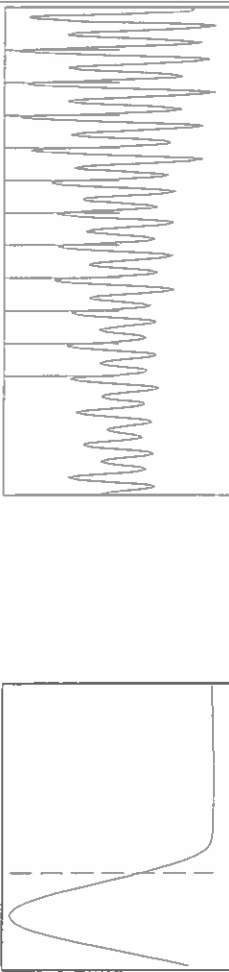
Group: SUBLETTE Well: PPCU 201 (acquired on: 04/03/24 15:05:35)



Filter Type High Pass  
Manual Acoustic Velocity 269 ft/s  
Automatic Collar Count Yes  
Manual JTS/sec 14.9254

Time 2.908 sec  
Joints 43.2595 Jts  
Depth 1371.33 ft

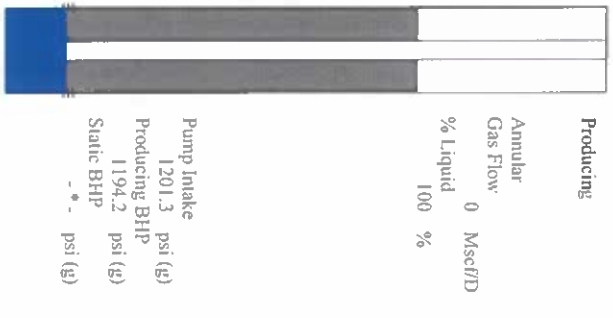
1.0 to 2.0 (Sec) |



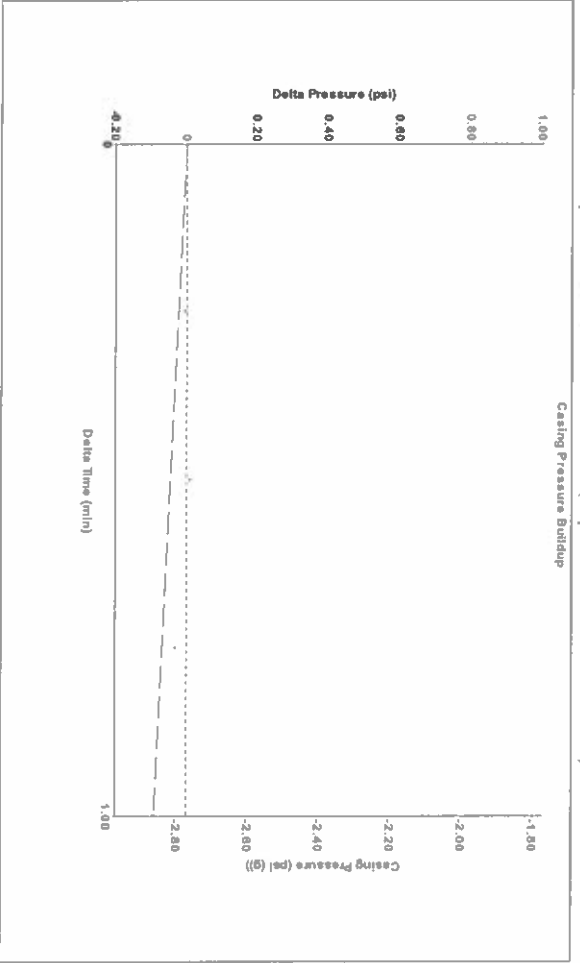
Analysis Method: Automatic

Group: SUBLETTE Well: PPCU 201 (acquired on: 04/03/24 15:05:35)

Production	Potential	Casing Pressure	Producing
Current	-*- BB/L/D	-2.8 psi (g)	
Oil	-*- BB/L/D	Casing Pressure Buildup	Annular Gas Flow
Water	-*- BB/L/D	-0.091 psi	0 Mscf/D
Gas	-*- Mscf/D	1.00 min	% Liquid
IPR Method	Vogel	Gas/Liquid Interface Pressure	100 %
PBHP/SBHP	-*-	-2.2 psi (g)	
Production Efficiency	0.0	Liquid Level Depth	
		1371.33 ft	
Oil	40 deg API	Pump Intake Depth	
Water	1.05 Sp Gr H <sub>2</sub> O	5106.00 ft	
Gas	1.02 Sp Gr AIR	Formation Depth	
		5082.00 ft	
Acoustic Velocity	943.14 ft/s		
Formation Submergence			
Total Gaseous Liquid Column HT (TVD)	3735 ft		
Equivalent Gas Free Liquid HT (TVD)	3735 ft		

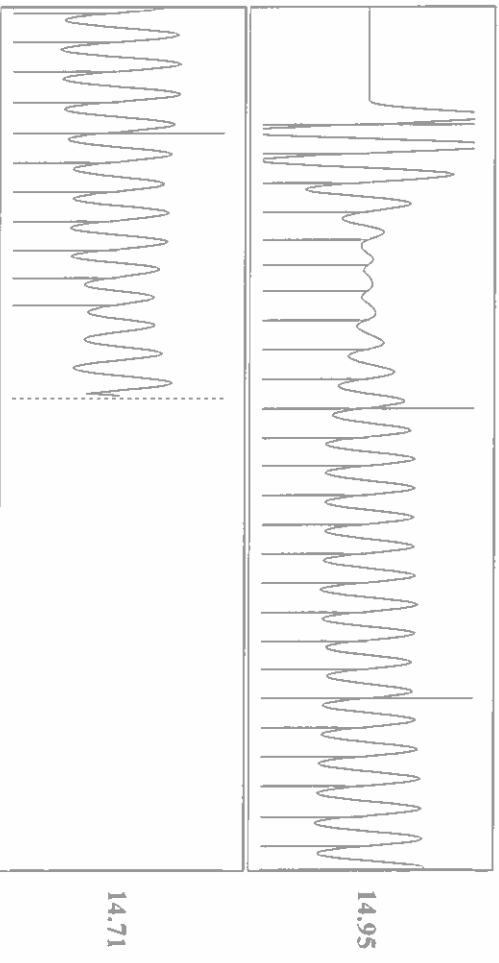


Group: SUBLETTE Well: PPCU 201 (acquired on: 04/03/24 15:05:35)



Change in Pressure -0.09 psi  
Change in Time 1.00 min  
PT 14679  
Range 0 - ? psi

Group: SUBLETTE Well: PPCU 201 (acquired on: 04/03/24 15:05:35)



Acoustic Velocity 943.14 ft/s  
Joints Per Second 14.876 Jts/sec  
Depth to liquid level 1371.33 ft  
Automatic Collar Count Yes  
Joints counted 36  
Joints to liquid level 43.2595  
Filler Width 12.9254  
Time to 1st Collar 0.272

Conservation Division  
District Office No. 1  
210 E. Frontview, Suite A  
Dodge City, KS 67801



Phone: 620-682-7933  
<http://kcc.ks.gov/>

Andrew J. French, Chairperson  
Dwight D. Keen, Commissioner  
Annie Kuether, Commissioner

Laura Kelly, Governor

04/04/2024

Katherine McClurkan  
Merit Energy Company, LLC  
13727 NOEL ROAD, SUITE 1200  
DALLAS, TX 75240-7362

Re: Temporary Abandonment  
API 15-081-21313-00-01  
PLEASANT PRAIRIE CHESTER UNIT 201  
NW/4 Sec.22-27S-34W  
Haskell County, Kansas

Dear Katherine McClurkan:

"Your temporary abandonment (TA) application for the well listed above has been approved. In accordance with K.A.R. 82-3-111 the TA status of this well will expire 04/04/2025.

- \* If you return this well to service or plug it, please notify the District Office.
- \* If you sell this well you are required to file a Transfer of Operator form, T-1.
- \* If the well will remain temporarily abandoned, you must submit a new TA application, CP-111, before 04/04/2025.

You may contact me at the number above if you have questions.

Very truly yours,

Michael Maier"