

KANSAS CORPORATION COMMISSION
OIL & GAS CONSERVATION DIVISION

TEMPORARY ABANDONMENT WELL APPLICATION

OPERATOR: License#
Name:
Address 1:
Address 2:
City: State: Zip:
Contact Person:
Phone:
Contact Person Email:
Field Contact Person:
Field Contact Person Phone:

API No. 15-
Spot Description:
Sec. Twp. S. R.
GPS Location: Lat: Long:
Datum: NAD27 NAD83 WGS84
County: Elevation:
Lease Name: Well #:
Well Type: Oil Gas OG WSW Other:
SWD Permit #: ENHR Permit #:
Gas Storage Permit #:
Spud Date: Date Shut-In:

Table with 7 columns: Conductor, Surface, Production, Intermediate, Liner, Tubing. Rows include Size, Setting Depth, Amount of Cement, Top of Cement, Bottom of Cement.

Casing Fluid Level from Surface: How Determined? Date:
Casing Squeeze(s): to w / sacks of cement, to w / sacks of cement. Date:
Do you have a valid Oil & Gas Lease? Yes No
Depth and Type: Junk in Hole at Tools in Hole at Casing Leaks: Yes No Depth of casing leak(s):
Type Completion: ALT. I ALT. II Depth of: DV Tool: w / sacks of cement Port Collar: w / sack of cement
Packer Type: Size: Inch Set at: Feet
Total Depth: Plug Back Depth: Plug Back Method:

Geological Data:

Table with 4 columns: Formation Name, Formation Top, Formation Base, Completion Information. Rows 1 and 2.

UNDER PENALTY OF PERJURY I HEREBY ATTEST THAT THE INFORMATION CONTAINED HEREIN IS TRUE AND CORRECT TO THE BEST OF MY KNOWLEDGE

Submitted Electronically

Do NOT Write in This Space - KCC USE ONLY
Date Tested: Results: Date Plugged: Date Repaired: Date Put Back in Service:
Review Completed by: Comments:
TA Approved: Yes Denied Date:

Mail to the Appropriate KCC Conservation Office:

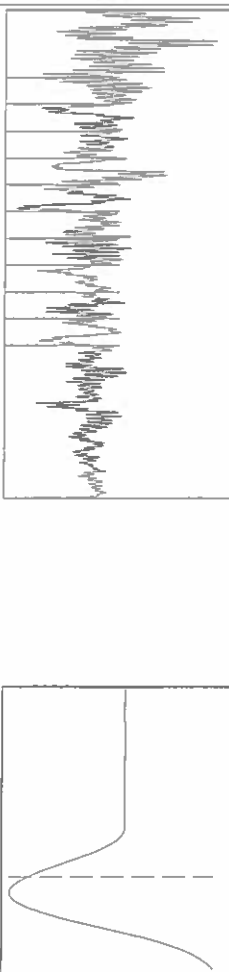
Map of Kansas with 4 numbered districts. Table with 3 columns: District Office Name, Address, Phone Number.

Group: SUBLETTE Well: Alexander 2-33 (acquired on: 04/05/24 12:36:18)



Filter Type High Pass Automatic Collar Count Yes
 Manual Acoustic Velo 152.73 ft/s Manual JTS/sec 18.1818

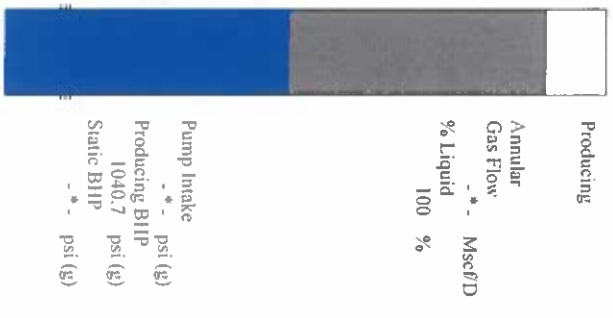
Time 4.23 sec
 Joints 79,5803 Jts
 Depth 2522.70 ft



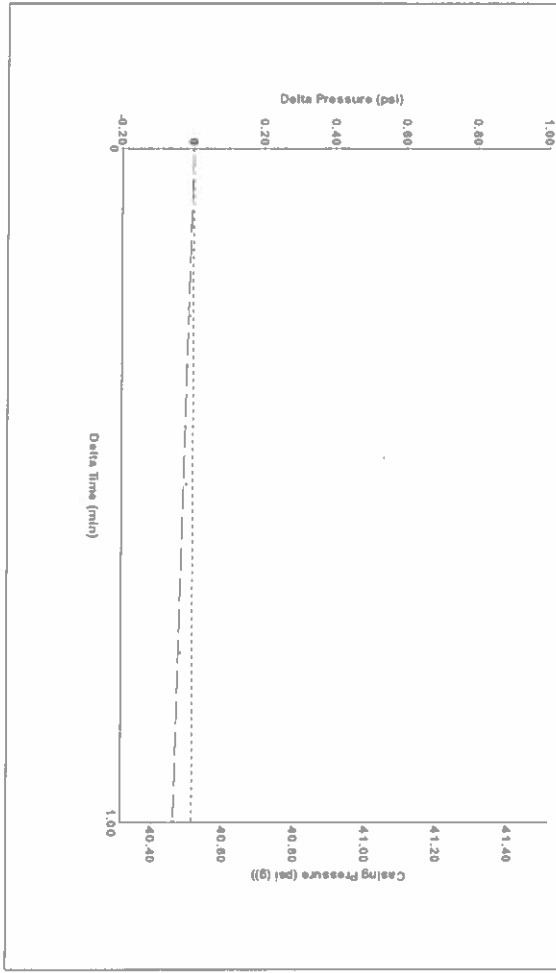
Analysis Method: Automatic

Group: SUBLETTE Well: Alexander 2-33 (acquired on: 04/05/24 12:36:18)

Production	Potential	Casing Pressure	Producing
Current	-*- BBL/D	40.5 psi (g)	Annular
Oil	-*- BBL/D	Casing Pressure Buildup	Gas Flow
Water	-*- Mscf/D	-0.052 psi	% Liquid
Gas	-*- Mscf/D	1.00 min	100 %
IPR Method	Vogel	Gas/Liquid Interface Pressure	
PBHP/SBHP	-*-	44.4 psi (g)	
Production Efficiency	0.0		
		Liquid Level Depth	
		2522.70 ft	
Oil 40 deg API		Pump Intake Depth	
Water 1.05 Sp.Gr.H2O		-*- ft	
Gas 0.79 Sp.Gr.AIR		Formation Depth	
		4714.00 ft	
Acoustic Velocity	1192.76 ft/s		

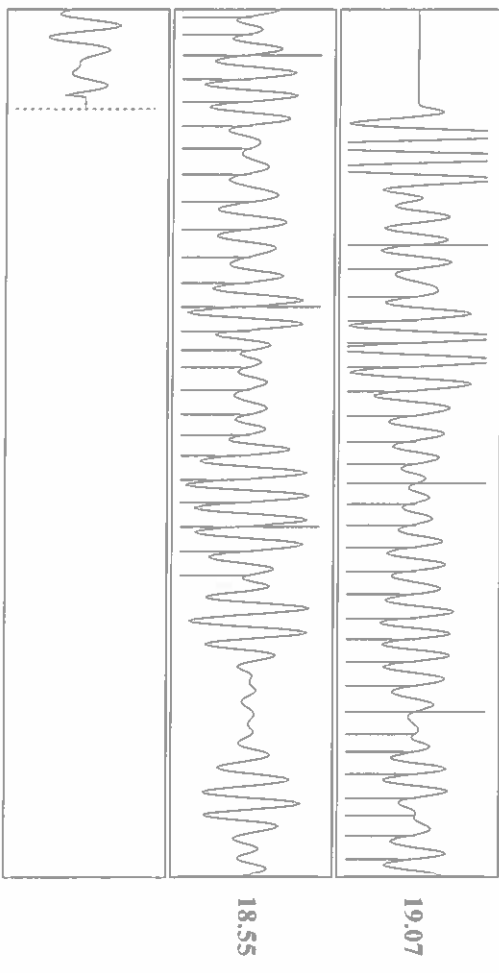


Group: SUBLETTE Well: Alexander 2-33 (acquired on: 04/05/24 12:36:18)



Change in Pressure -0.05 psi PT 14679
 Change in Time 1.00 min Range

Group: SUBLETTE Well: Alexander 2-33 (acquired on: 04/05/24 12:36:18)



Acoustic Velocity 1192.76 ft/s Joints counted 52
 Joints Per Second 18.8133 Jts/sec Joints to liquid level 79,5803
 Depth to liquid level 2522.7 ft Filler Width 16,1818
 Automatic Collar Count Yes Time to 1st Collar 0.544 3.308

Conservation Division
District Office No. 1
210 E. Frontview, Suite A
Dodge City, KS 67801



Phone: 620-682-7933
<http://kcc.ks.gov/>

Andrew J. French, Chairperson
Dwight D. Keen, Commissioner
Annie Kuether, Commissioner

Laura Kelly, Governor

04/10/2024

Katherine McClurkan
Merit Energy Company, LLC
13727 Noel Road, Suite 1200
Dallas, TX 75240

Re: Temporary Abandonment
API 15-081-22078-00-00
Alexander 2-33
SE/4 Sec.33-27S-34W
Haskell County, Kansas

Dear Katherine McClurkan:

"Your temporary abandonment (TA) application for the well listed above has been approved. In accordance with K.A.R. 82-3-111 the TA status of this well will expire 09/25/2024.

- * If you return this well to service or plug it, please notify the District Office.
- * If you sell this well you are required to file a Transfer of Operator form, T-1.
- * If the well will remain temporarily abandoned, you must submit a new TA application, CP-111, before 09/25/2024.

You may contact me at the number above if you have questions.

Very truly yours,

Michael Maier"