

KANSAS CORPORATION COMMISSION
OIL & GAS CONSERVATION DIVISION

TEMPORARY ABANDONMENT WELL APPLICATION

OPERATOR: License#
Name:
Address 1:
Address 2:
City: State: Zip:
Contact Person:
Phone:
Contact Person Email:
Field Contact Person:
Field Contact Person Phone:

API No. 15-
Spot Description:
Sec. Twp. S. R.
GPS Location: Lat: Long:
Datum: NAD27 NAD83 WGS84
County: Elevation:
Lease Name: Well #:
Well Type: Oil Gas OG WSW Other:
SWD Permit #: ENHR Permit #:
Gas Storage Permit #:
Spud Date: Date Shut-In:

Table with 7 columns: Conductor, Surface, Production, Intermediate, Liner, Tubing. Rows include Size, Setting Depth, Amount of Cement, Top of Cement, Bottom of Cement.

Casing Fluid Level from Surface: How Determined? Date:
Casing Squeeze(s): to w / sacks of cement, to w / sacks of cement. Date:
Do you have a valid Oil & Gas Lease? Yes No
Depth and Type: Junk in Hole at Tools in Hole at Casing Leaks: Yes No Depth of casing leak(s):
Type Completion: ALT. I ALT. II Depth of: DV Tool: w / sacks of cement Port Collar: w / sack of cement
Packer Type: Size: Inch Set at: Feet
Total Depth: Plug Back Depth: Plug Back Method:

Geological Date:

Table with 4 columns: Formation Name, Formation Top, Formation Base, Completion Information. Rows 1 and 2.

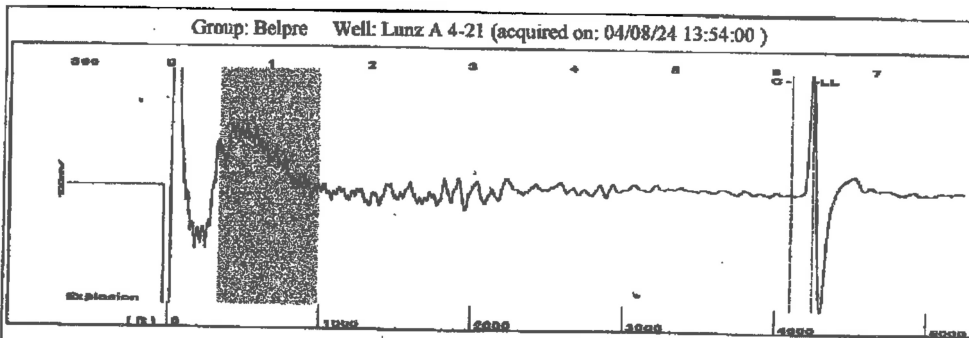
UNDER PENALTY OF PERJURY I HEREBY ATTEST THAT THE INFORMATION CONTAINED HEREIN IS TRUE AND CORRECT TO THE BEST OF MY KNOWLEDGE

Submitted Electronically

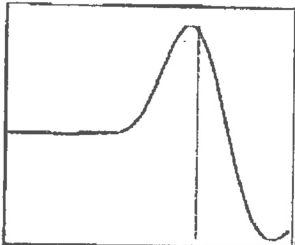
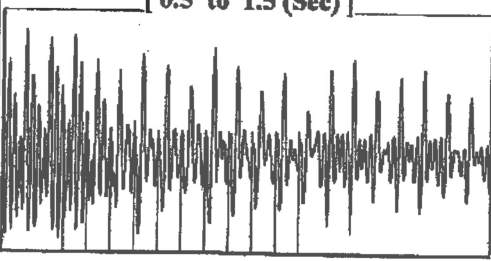
Do NOT Write in This Space - KCC USE ONLY
Date Tested: Results: Date Plugged: Date Repaired: Date Put Back in Service:
Review Completed by: Comments:
TA Approved: Yes Denied Date:

Mail to the Appropriate KCC Conservation Office:

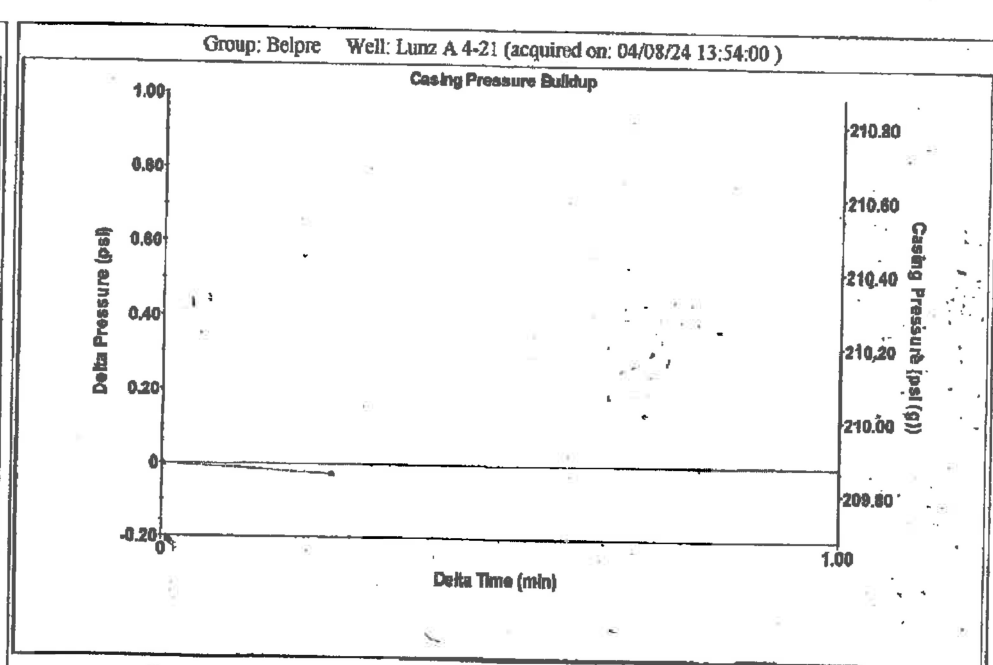
Table with 2 columns: Office Address, Phone. Rows for District Office #1, #2, #3, #4.



Filter Type High Pass Automatic Collar Count Yes Time 6.384 sec
 Manual Acoustic Velo 1321.99 ft/s Manual JTS/sec 20.7469 Joints 133.185 Jts
 Depth 4243.27 ft



Analysis Method: Automatic



Change in Pressure -0.03 psi PT 13440
 Change in Time 0.25 min Range 0 - ? psi

Group: Belpre Well: Lunz A 4-21 (acquired on: 04/08/24 13:54:00)

Production Current	Potential	Casing Pressure		Producing
Oil -*- BBL/D	-*- BBL/D	209.9 psi (g)		Annular Gas Flow 0 Mscf/D
Water -*- BBL/D	-*- BBL/D	Casing Pressure Buildup -0.028 psi		% Liquid 100 %
Gas -*- Mscf/D	-*- Mscf/D	0.25 min		
IPR Method Vogel		Gas/Liquid Interface Pressure 232.5 psi (g)		
PBHP/SBHP -*- -		Liquid Level Depth 4243.27 ft		
Production Efficiency 0.0		Pump Intake Depth 4270.00 ft		
Oil 40 deg.API		Formation Depth 4271.00 ft		
Water 1.05 Sp.Gr.H2O				
Gas 0.66 Sp.Gr.AIR				

Acoustic Velocity 1329.35 ft/s

Formation Submergence 27 ft
 Total Gaseous Liquid Column HT (TVD) 27 ft
 Equivalent Gas Free Liquid HT (TVD) 27 ft

Acoustic Test

Pump Intake 241.4 psi (g)
 Producing BHP 241.9 psi (g)
 Static BHP -*- psi (g)

Group: Belpre Well: Lunz A 4-21 (acquired on: 04/08/24 13:54:00)

Acoustic Velocity	1329.35 ft/s	Joints counted	120
Joints Per Second	20.8623 jts/sec	Joints to liquid level	133.185
Depth to liquid level	4243.27 ft	Filter Width	18.7469
Automatic Collar Count	Yes	Time to 1st Collar	22.7469
			6.168

04/10/2024

Loveness Mpanje
F. G. Holl Company L.L.C.
9431 E CENTRAL STE 100
WICHITA, KS 67206-2563

Re: Temporary Abandonment
API 15-047-21229-00-00
LUNZ - A 4-21
NW/4 Sec.21-24S-16W
Edwards County, Kansas

Dear Loveness Mpanje:

"Your temporary abandonment (TA) application for the well listed above has been approved. In accordance with K.A.R. 82-3-111 the TA status of this well will expire 04/10/2025.

- * If you return this well to service or plug it, please notify the District Office.
- * If you sell this well you are required to file a Transfer of Operator form, T-1.
- * If the well will remain temporarily abandoned, you must submit a new TA application, CP-111, before 04/10/2025.

You may contact me at the number above if you have questions.

Very truly yours,

Michael Maier"