

KANSAS CORPORATION COMMISSION
OIL & GAS CONSERVATION DIVISION

TEMPORARY ABANDONMENT WELL APPLICATION

OPERATOR: License# \_\_\_\_\_
Name: \_\_\_\_\_
Address 1: \_\_\_\_\_
Address 2: \_\_\_\_\_
City: \_\_\_\_\_ State: \_\_\_\_\_ Zip: \_\_\_\_\_ + \_\_\_\_\_
Contact Person: \_\_\_\_\_
Phone:( \_\_\_\_\_ ) \_\_\_\_\_
Contact Person Email: \_\_\_\_\_
Field Contact Person: \_\_\_\_\_
Field Contact Person Phone: ( \_\_\_\_\_ ) \_\_\_\_\_

API No. 15- \_\_\_\_\_
Spot Description: \_\_\_\_\_
- - - - - Sec. \_\_\_\_\_ Twp. \_\_\_\_\_ S. R. \_\_\_\_\_  E  W
\_\_\_\_\_ feet from  N /  S Line of Section
\_\_\_\_\_ feet from  E /  W Line of Section
GPS Location: Lat: \_\_\_\_\_, Long: \_\_\_\_\_
Datum:  NAD27  NAD83  WGS84
County: \_\_\_\_\_ Elevation: \_\_\_\_\_  GL  KB
Lease Name: \_\_\_\_\_ Well #: \_\_\_\_\_
Well Type: (check one)  Oil  Gas  OG  WSW  Other: \_\_\_\_\_
 SWD Permit #: \_\_\_\_\_  ENHR Permit #: \_\_\_\_\_
 Gas Storage Permit #: \_\_\_\_\_
Spud Date: \_\_\_\_\_ Date Shut-In: \_\_\_\_\_

Table with 7 columns: Conductor, Surface, Production, Intermediate, Liner, Tubing. Rows include Size, Setting Depth, Amount of Cement, Top of Cement, Bottom of Cement.

Casing Fluid Level from Surface: \_\_\_\_\_ How Determined? \_\_\_\_\_ Date: \_\_\_\_\_
Casing Squeeze(s): \_\_\_\_\_ to \_\_\_\_\_ w / \_\_\_\_\_ sacks of cement, \_\_\_\_\_ to \_\_\_\_\_ w / \_\_\_\_\_ sacks of cement. Date: \_\_\_\_\_
Do you have a valid Oil & Gas Lease?  Yes  No
Depth and Type:  Junk in Hole at \_\_\_\_\_ (depth)  Tools in Hole at \_\_\_\_\_ (depth) Casing Leaks:  Yes  No Depth of casing leak(s): \_\_\_\_\_
Type Completion:  ALT. I  ALT. II Depth of:  DV Tool: \_\_\_\_\_ w / \_\_\_\_\_ sacks of cement  Port Collar: \_\_\_\_\_ w / \_\_\_\_\_ sack of cement
Packer Type: \_\_\_\_\_ Size: \_\_\_\_\_ Inch Set at: \_\_\_\_\_ Feet
Total Depth: \_\_\_\_\_ Plug Back Depth: \_\_\_\_\_ Plug Back Method: \_\_\_\_\_

Geological Data:

Table with 4 columns: Formation Name, Formation Top, Formation Base, Completion Information. Rows 1 and 2.

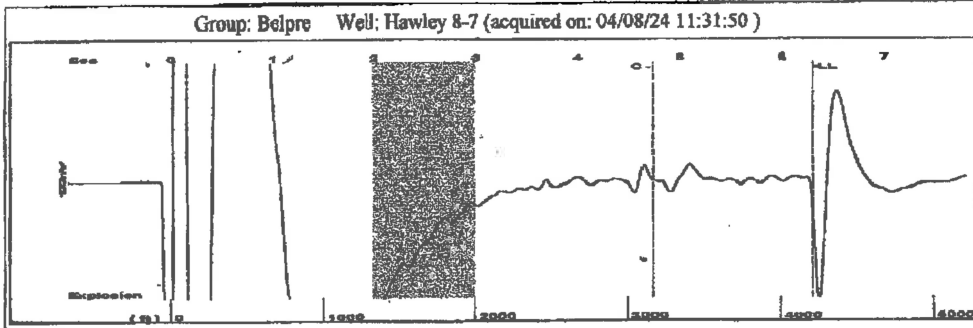
UNDER PENALTY OF PERJURY I HEREBY ATTEST THAT THE INFORMATION CONTAINED HEREIN IS TRUE AND CORRECT TO THE BEST OF MY KNOWLEDGE

Submitted Electronically

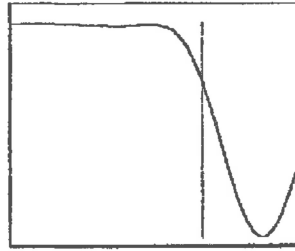
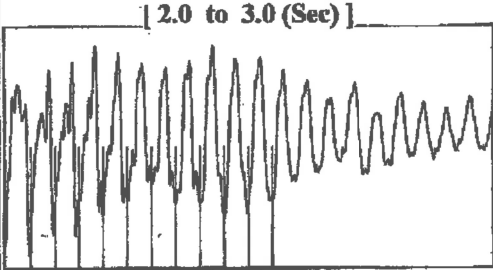
Do NOT Write in This Space - KCC USE ONLY
Date Tested: \_\_\_\_\_ Results: \_\_\_\_\_ Date Plugged: \_\_\_\_\_ Date Repaired: \_\_\_\_\_ Date Put Back in Service: \_\_\_\_\_
Review Completed by: \_\_\_\_\_ Comments: \_\_\_\_\_
TA Approved:  Yes  Denied Date: \_\_\_\_\_

Mail to the Appropriate KCC Conservation Office:

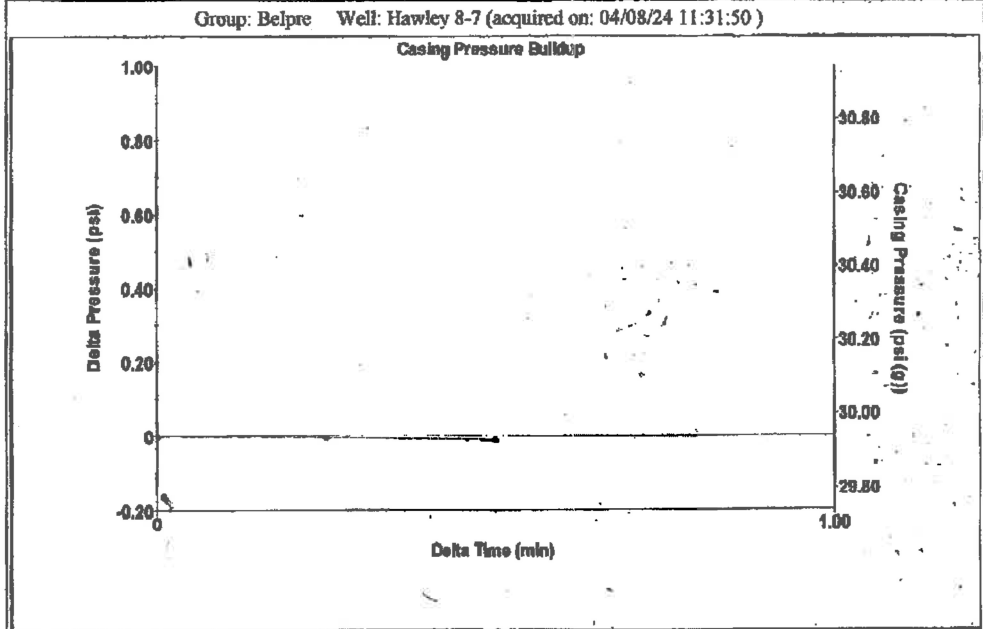
Table with 3 columns: District Office, Address, Phone. Rows 1-4.



Filter Type High Pass Automatic Collar Count Yes Time 6.296 sec  
 Manual Acoustic Veloc: 1291.5 ft/s Manual JTS/sec 20.2429 Joints 131.868 Jts  
 Depth 4206.59 ft



Analysis Method: Automatic



Change in Pressure -0.01 psi PT13440  
 Change in Time 0.50 min Range -0-? psi

Group: Belpre Well: Hawley 8-7 (acquired on: 04/08/24 11:31:50)

<b>Production</b> Current Potential Oil - * - BBL/D Water - * - BBL/D Gas - * - Mscf/D  IPR Method Vogel PBHP/SBHP - * - Production Efficiency 0.0  Oil 40 deg.API Water 1.05 Sp.Gr.H2O Gas 0.67 Sp.Gr.AIR  Acoustic Velocity 1336.27 ft/s	<b>Casing Pressure</b> 29.9 psi (g) <b>Casing Pressure Buildup</b> -0.011 psi 0.50 min <b>Gas/Liquid Interface Pressure</b> 34.4 psi (g)  <b>Liquid Level Depth</b> 4206.59 ft <b>Pump Intake Depth</b> 4243.00 ft <b>Formation Depth</b> 4259.00 ft  <b>Formation Submergence</b> Total Gaseous Liquid Column HT (TVD) 36 ft Equivalent Gas Free Liquid HT (TVD) 36 ft  <b>Acoustic Test</b>		<b>Producing</b>  <b>Annular Gas Flow</b> 0 Mscf/D <b>% Liquid</b> 100 %  <b>Pump Intake</b> 46.6 psi (g) <b>Producing BHP</b> 53.9 psi (g) <b>Static BHP</b> - * - psi (g)
--	--	--	---

Group: Belpre Well: Hawley 8-7 (acquired on: 04/08/24 11:31:50)

Acoustic Velocity	1336.27 ft/s	Joints counted	94
Joints Per Second	20.9447 jts/sec	Joints to liquid level	131.868
Depth to liquid level	4206.59 ft	Filter Width	18.2429 22.2429
Automatic Collar Count	Yes	Time to 1st Collar	0.248 4.736

Conservation Division  
District Office No. 1  
210 E. Frontview, Suite A  
Dodge City, KS 67801



Phone: 620-682-7933  
<http://kcc.ks.gov/>

Andrew J. French, Chairperson  
Dwight D. Keen, Commissioner  
Annie Kuether, Commissioner

Laura Kelly, Governor

04/10/2024

Margery L. Nagel  
F. G. Holl Company L.L.C.  
9431 E CENTRAL STE 100  
WICHITA, KS 67206-2563

Re: Temporary Abandonment  
API 15-047-21111-00-00  
HAWLEY 8-7  
NW/4 Sec.07-24S-16W  
Edwards County, Kansas

Dear Margery L. Nagel:

"Your temporary abandonment (TA) application for the well listed above has been approved. In accordance with K.A.R. 82-3-111 the TA status of this well will expire 04/10/2025.

- \* If you return this well to service or plug it, please notify the District Office.
- \* If you sell this well you are required to file a Transfer of Operator form, T-1.
- \* If the well will remain temporarily abandoned, you must submit a new TA application, CP-111, before 04/10/2025.

You may contact me at the number above if you have questions.

Very truly yours,

Michael Maier"