

KANSAS CORPORATION COMMISSION
OIL & GAS CONSERVATION DIVISION

TEMPORARY ABANDONMENT WELL APPLICATION

OPERATOR: License#
Name:
Address 1:
Address 2:
City: State: Zip:
Contact Person:
Phone:
Contact Person Email:
Field Contact Person:
Field Contact Person Phone:

API No. 15-
Spot Description:
Sec. Twp. S. R.
GPS Location: Lat: Long:
Datum: NAD27 NAD83 WGS84
County: Elevation:
Lease Name: Well #:
Well Type: Oil Gas OG WSW Other:
SWD Permit #: ENHR Permit #:
Gas Storage Permit #:
Spud Date: Date Shut-In:

Table with 7 columns: Conductor, Surface, Production, Intermediate, Liner, Tubing. Rows include Size, Setting Depth, Amount of Cement, Top of Cement, Bottom of Cement.

Casing Fluid Level from Surface: How Determined? Date:
Casing Squeeze(s): to w / sacks of cement, to w / sacks of cement. Date:
Do you have a valid Oil & Gas Lease? Yes No
Depth and Type: Junk in Hole at Tools in Hole at Casing Leaks: Yes No Depth of casing leak(s):
Type Completion: ALT. I ALT. II Depth of: DV Tool: w / sacks of cement Port Collar: w / sack of cement
Packer Type: Size: Inch Set at: Feet
Total Depth: Plug Back Depth: Plug Back Method:

Geological Data:

Table with 4 columns: Formation Name, Formation Top, Formation Base, Completion Information. Rows 1 and 2.

UNDER PENALTY OF PERJURY I HEREBY ATTEST THAT THE INFORMATION CONTAINED HEREIN IS TRUE AND CORRECT TO THE BEST OF MY KNOWLEDGE

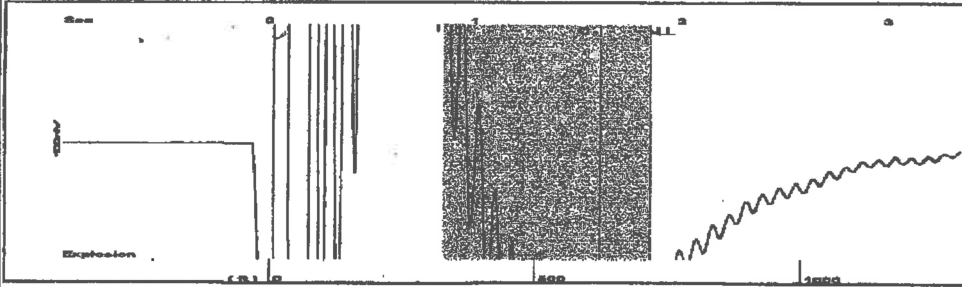
Submitted Electronically

Do NOT Write in This Space - KCC USE ONLY
Date Tested: Results: Date Plugged: Date Repaired: Date Put Back in Service:
Review Completed by: Comments:
TA Approved: Yes Denied Date:

Mail to the Appropriate KCC Conservation Office:

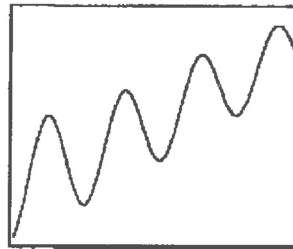
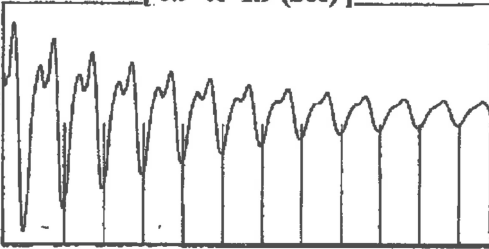
Table with 3 columns: District Office #, Address, Phone. Rows 1-4.

Group: Belpre Well: Walker 1-10 (acquired on: 03/15/24 22:32:57)



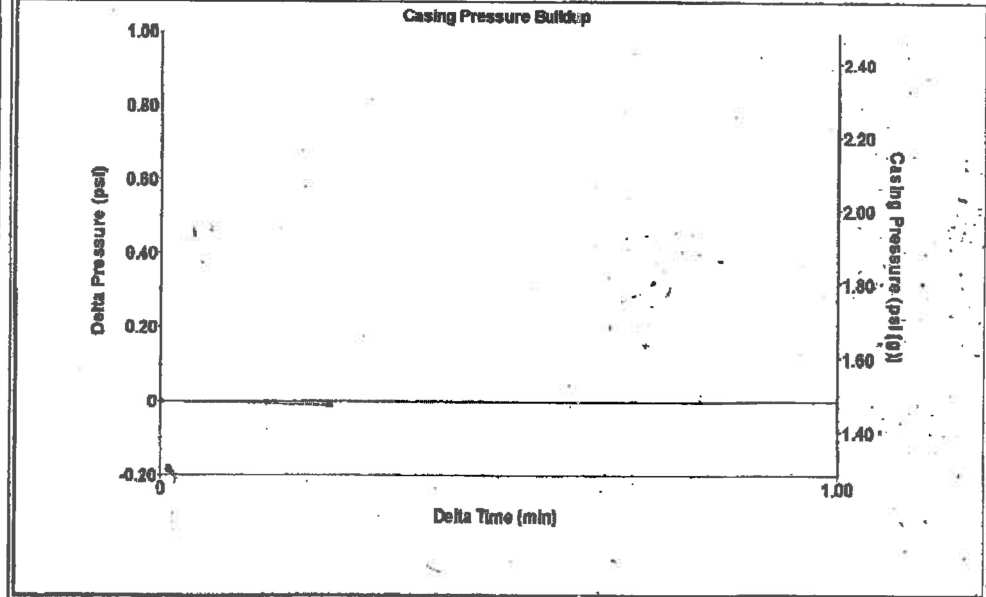
Filter Type High Pass Automatic Collar Count Yes Time 1.851 sec
 Manual Acoustic Velo 774.106 ft/s Manual JTS/sec 12.3305 Joints 22.8519 Jts
 Depth 717.32 ft

[0.9 to 1.9 (Sec)]



Analysis Method: Automatic

Group: Belpre Well: Walker 1-10 (acquired on: 03/15/24 22:32:57)



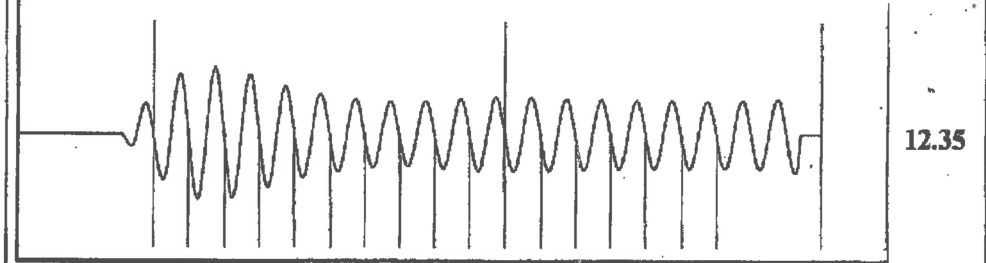
Change in Pressure -0.01 psi PT13440
 Range -0.7 psi
 Change in Time 0.25 min

Group: Belpre Well: Walker 1-10 (acquired on: 03/15/24 22:32:57)

Production Current	Potential	Casing Pressure	Producing
Oil -*- BBL/D	-*- BBL/D	1.5 psi (g)	
Water -*- BBL/D	-*- BBL/D	Casing Pressure Buildup	Annular Gas Flow
Gas -*- Mscf/D	-*- Mscf/D	-0.012 psi	0 Mscf/D
		0.25 min	% Liquid
		Gas/Liquid Interface Pressure	100 %
IPR Method Vogel		2.0 psi (g)	
PBHP/SBHP -*-			
Production Efficiency 0.0		Liquid Level Depth	
		717.32 ft	
Oil 40 deg.API		Pump Intake Depth	
Water 1.05 Sp.Gr.H2O		2072.00 ft	
Gas 1.18 Sp.Gr.AIR		Formation Depth	
		1983.00 ft	
Acoustic Velocity 775.062 ft/s			
		Pump Intake	
		460.6 psi (g)	
Formation Submergence		Producing BHP	
Total Gaseous Liquid Column HT (TVD) 1355 ft		431.6 psi (g)	
Equivalent Gas Free Liquid HT (TVD) 1355 ft		Static BHP	
		-*- psi (g)	



Group: Belpre Well: Walker 1-10 (acquired on: 03/15/24 22:32:57)



12.35

Acoustic Velocity 775.062 ft/s Joints counted 16
 Joints Per Second 12.3457 jts/sec Joints to liquid level 22.8519
 Depth to liquid level 717.32 ft Filter Width 10.3305 14.3305
 Automatic Collar Count Yes Time to 1st Collar 0.312 1.608

Conservation Division
District Office No. 1
210 E. Frontview, Suite A
Dodge City, KS 67801



Phone: 620-682-7933
<http://kcc.ks.gov/>

Andrew J. French, Chairperson
Dwight D. Keen, Commissioner
Annie Kuether, Commissioner

Laura Kelly, Governor

04/10/2024

Loveness Mpanje
F. G. Holl Company L.L.C.
9431 E CENTRAL STE 100
WICHITA, KS 67206-2563

Re: Temporary Abandonment
API 15-185-20274-00-01
WALKER 1
SE/4 Sec.10-24S-15W
Stafford County, Kansas

Dear Loveness Mpanje:

"Your temporary abandonment (TA) application for the well listed above has been approved. In accordance with K.A.R. 82-3-111 the TA status of this well will expire 04/10/2025.

- * If you return this well to service or plug it, please notify the District Office.
- * If you sell this well you are required to file a Transfer of Operator form, T-1.
- * If the well will remain temporarily abandoned, you must submit a new TA application, CP-111, before 04/10/2025.

You may contact me at the number above if you have questions.

Very truly yours,

Michael Maier"