

KANSAS CORPORATION COMMISSION
OIL & GAS CONSERVATION DIVISION

Form must be Typed
Form must be signed

TEMPORARY ABANDONMENT WELL APPLICATION

All blanks must be complete

OPERATOR: License#
Name:
Address 1:
Address 2:
City: State: Zip:
Contact Person:
Phone:
Contact Person Email:
Field Contact Person:
Field Contact Person Phone:

API No. 15-
Spot Description:
Sec. Twp. S. R.
GPS Location: Lat: Long:
Datum: NAD27 NAD83 WGS84
County: Elevation:
Lease Name: Well #:
Well Type: Oil Gas OG WSW Other:
SWD Permit #: ENHR Permit #:
Gas Storage Permit #:
Spud Date: Date Shut-In:

Table with 7 columns: Conductor, Surface, Production, Intermediate, Liner, Tubing. Rows include Size, Setting Depth, Amount of Cement, Top of Cement, Bottom of Cement.

Casing Fluid Level from Surface: How Determined? Date:
Casing Squeeze(s): to w / sacks of cement, to w / sacks of cement. Date:
Do you have a valid Oil & Gas Lease? Yes No
Depth and Type: Junk in Hole at Tools in Hole at Casing Leaks: Yes No Depth of casing leak(s):
Type Completion: ALT. I ALT. II Depth of: DV Tool: w / sacks of cement Port Collar: w / sack of cement
Packer Type: Size: Inch Set at: Feet
Total Depth: Plug Back Depth: Plug Back Method:

Geological Data:

Table with 4 columns: Formation Name, Formation Top, Formation Base, Completion Information. Rows 1 and 2.

UNDER PENALTY OF PERJURY I HEREBY ATTEST THAT THE INFORMATION CONTAINED HEREIN IS TRUE AND CORRECT TO THE BEST OF MY KNOWLEDGE

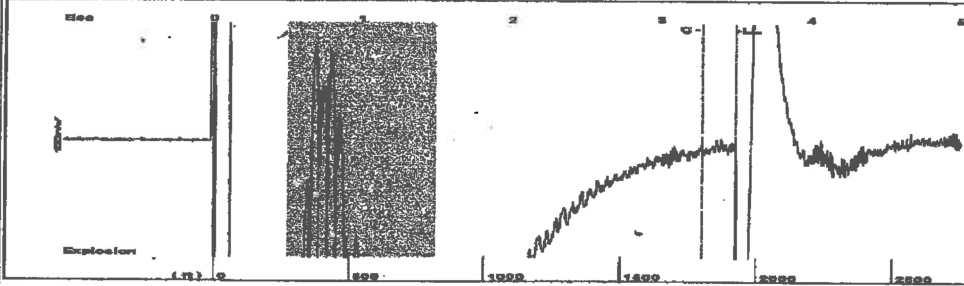
Submitted Electronically

Do NOT Write in This Space - KCC USE ONLY
Date Tested: Results: Date Plugged: Date Repaired: Date Put Back in Service:
Review Completed by: Comments:
TA Approved: Yes Denied Date:

Mail to the Appropriate KCC Conservation Office:

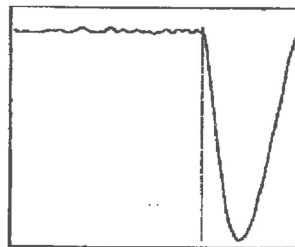
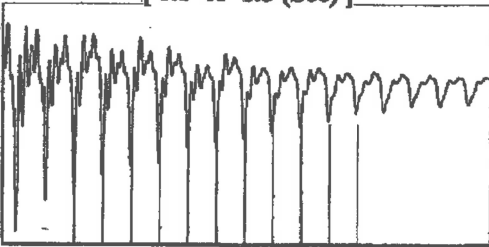
Table with 2 columns: Office Address, Phone. Rows for District Office #1, #2, #3, #4.

Group: Radium Well: Mermis 1-1 (acquired on: 04/08/24 15:41:20)



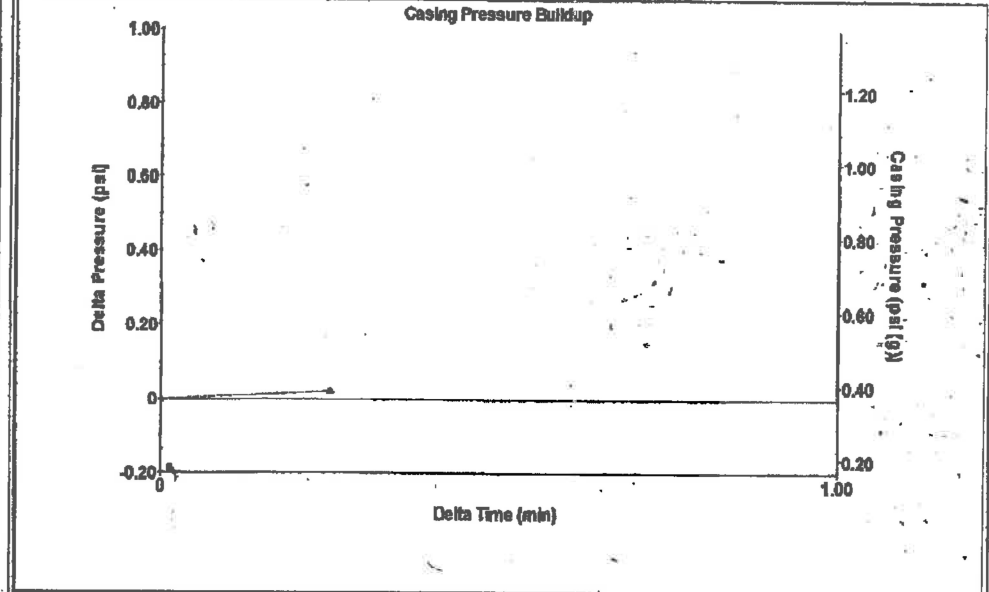
Filter Type High Pass Automatic Collar Count Yes Time 3.499 sec
 Manual Acoustic Veloc 1093.1 ft/s Manual JTS/sec 17.2414 Joints 60.7303 J/s
 Depth 1925.15 ft

[0.5 to 1.5 (Sec)]



Analysis Method: Automatic

Group: Radium Well: Mermis 1-1 (acquired on: 04/08/24 15:41:20)

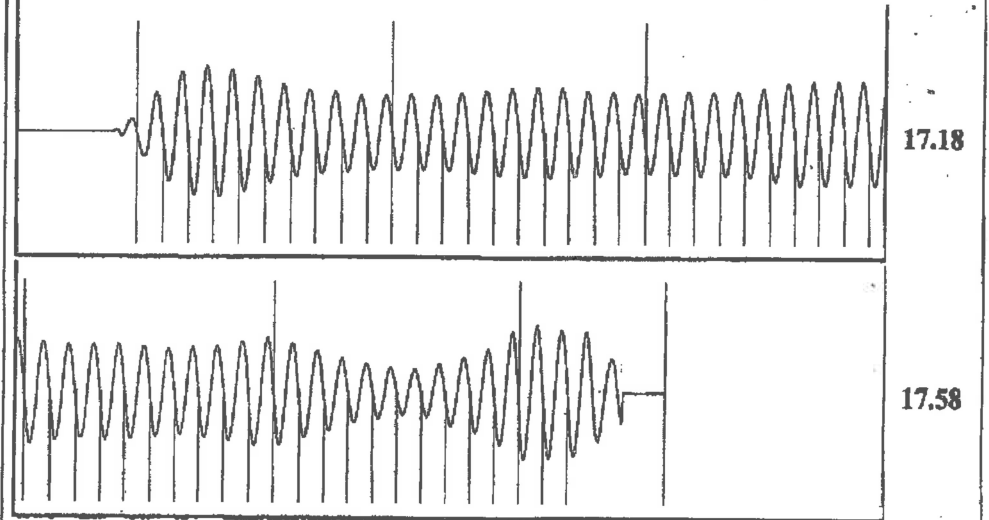


Change in Pressure 0.02 psi PT13440
 Change in Time 0.25 min Range -0.7 psi

Group: Radium Well: Mermis 1-1 (acquired on: 04/08/24 15:41:20)

Production	Potential	Casing Pressure	Producing
Oil - * -	- * - BBL/D	0.4 psi (g)	
Water - * -	- * - BBL/D	Casing Pressure Buildup	Annular Gas Flow
Gas - * -	- * - Mscf/D	0.021 psi	1 Mscf/D
		0.25 min	% Liquid 93 %
IPR Method	Vogel	Gas/Liquid Interface Pressure	
PBHP/SBHP	- * -	1.3 psi (g)	
Production Efficiency	0.0		
Oil 40 deg.API		Liquid Level Depth	
Water 1.05 Sp.Gr.H2O		1925.15 ft	
Gas 0.88 Sp.Gr.AIR		Pump Intake Depth	
		3550.00 ft	
Acoustic Velocity	1100.4 ft/s	Formation Depth	
		3418.00 ft	
Formation Submergence		Pump Intake	
Total Gaseous Liquid Column HT (TVD)	1625 ft	515.2 psi (g)	
Equivalent Gas Free Liquid HT (TVD)	1528 ft	Producing BHP	
		472.2 psi (g)	
Acoustic Test		Static BHP	
		- * - psi (g)	

Group: Radium Well: Mermis 1-1 (acquired on: 04/08/24 15:41:20)



Acoustic Velocity 1100.4 ft/s Joints counted 52
 Joints Per Second 17.3565 jts/sec Joints to liquid level 60.7303
 Depth to liquid level 1925.15 ft Filter Width 15.2414 19.2414
 Automatic Collar Count Yes Time to 1st Collar 0.276 3.272

Conservation Division
District Office No. 4
2301 E. 13th Street
Hays, KS 67601-2651



Phone: 785-261-6250
<http://kcc.ks.gov/>

Andrew J. French, Chairperson
Dwight D. Keen, Commissioner
Annie Kuether, Commissioner

Laura Kelly, Governor

04/10/2024

Loveness Mpanje
F. G. Holl Company L.L.C.
9431 E CENTRAL STE 100
WICHITA, KS 67206-2563

Re: Temporary Abandonment
API 15-009-25485-00-00
MERMIS 1-1
NE/4 Sec.01-20S-15W
Barton County, Kansas

Dear Loveness Mpanje:

"Your temporary abandonment (TA) application for the well listed above has been approved. In accordance with K.A.R. 82-3-111 the TA status of this well will expire 04/10/2025.

- * If you return this well to service or plug it, please notify the District Office.
- * If you sell this well you are required to file a Transfer of Operator form, T-1.
- * If the well will remain temporarily abandoned, you must submit a new TA application, CP-111, before 04/10/2025.

You may contact me at the number above if you have questions.

Very truly yours,

RICHARD WILLIAMS"