

KANSAS CORPORATION COMMISSION
OIL & GAS CONSERVATION DIVISION

Form must be Typed
Form must be signed

TEMPORARY ABANDONMENT WELL APPLICATION

All blanks must be complete

OPERATOR: License#
Name:
Address 1:
Address 2:
City: State: Zip:
Contact Person:
Phone:
Contact Person Email:
Field Contact Person:
Field Contact Person Phone:

API No. 15-
Spot Description:
Sec. Twp. S. R.
GPS Location: Lat: Long:
Datum: NAD27 NAD83 WGS84
County: Elevation:
Lease Name: Well #:
Well Type: Oil Gas OG WSW Other:
SWD Permit #: ENHR Permit #:
Gas Storage Permit #:
Spud Date: Date Shut-In:

Table with 7 columns: Conductor, Surface, Production, Intermediate, Liner, Tubing. Rows include Size, Setting Depth, Amount of Cement, Top of Cement, Bottom of Cement.

Casing Fluid Level from Surface: How Determined? Date:
Casing Squeeze(s): to w / sacks of cement, to w / sacks of cement. Date:
Do you have a valid Oil & Gas Lease? Yes No
Depth and Type: Junk in Hole at Tools in Hole at Casing Leaks: Yes No Depth of casing leak(s):
Type Completion: ALT. I ALT. II Depth of: DV Tool: w / sacks of cement Port Collar: w / sack of cement
Packer Type: Size: Inch Set at: Feet
Total Depth: Plug Back Depth: Plug Back Method:

Geological Data:

Table with 4 columns: Formation Name, Formation Top, Formation Base, Completion Information. Rows 1 and 2.

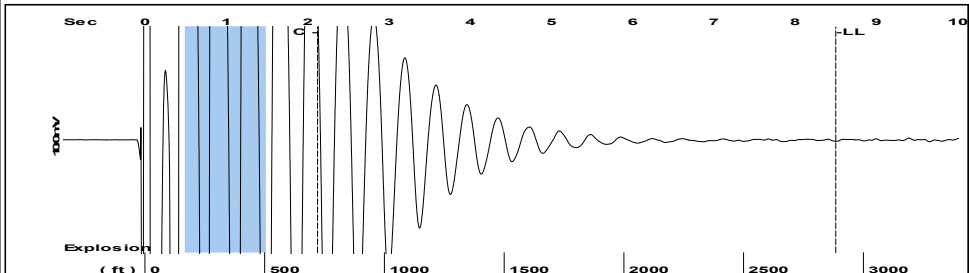
UNDER PENALTY OF PERJURY I HEREBY ATTEST THAT THE INFORMATION CONTAINED HEREIN IS TRUE AND CORRECT TO THE BEST OF MY KNOWLEDGE

Submitted Electronically

Do NOT Write in This Space - KCC USE ONLY
Date Tested: Results: Date Plugged: Date Repaired: Date Put Back in Service:
Review Completed by: Comments:
TA Approved: Yes Denied Date:

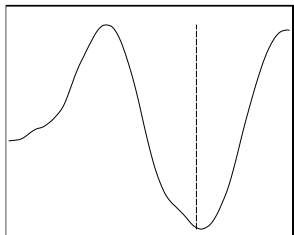
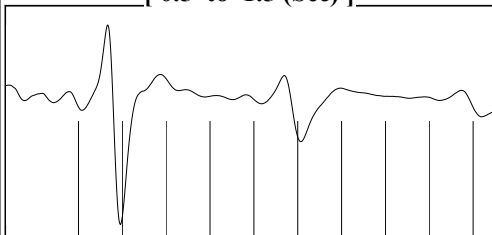
Mail to the Appropriate KCC Conservation Office:

Table with 2 columns: Office Address, Phone. Rows for District Office #1, #2, #3, #4.

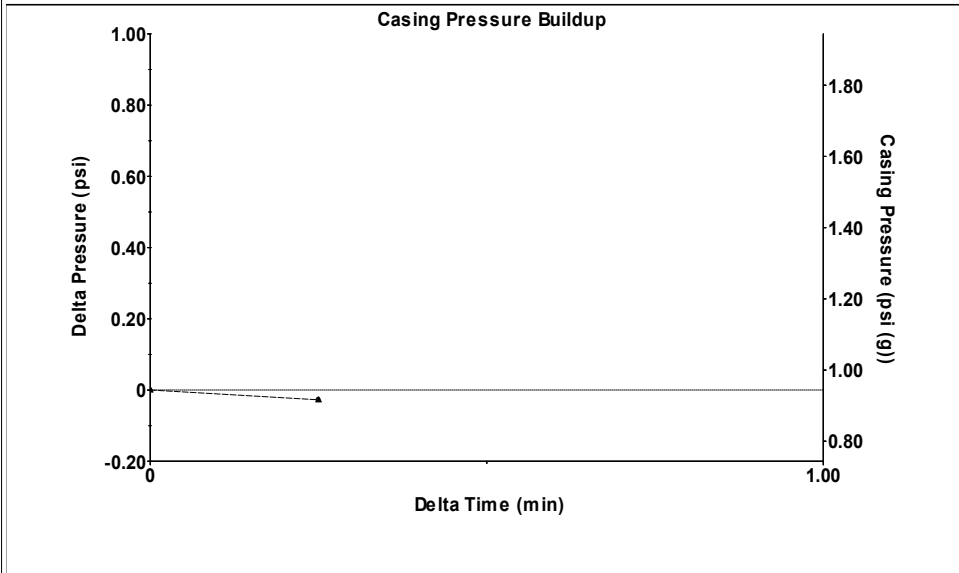


Filter Type High Pass Automatic Collar Count Yes Time 8.5 sec
 Manual Acoustic Veloc 703.663 ft/s Manual JTS/sec 11.0988 Joints 90.995 Jts
 Depth 2884.54 ft

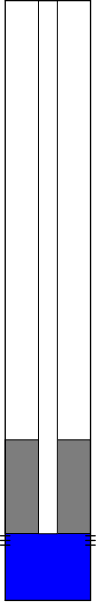
[0.5 to 1.5 (Sec)]

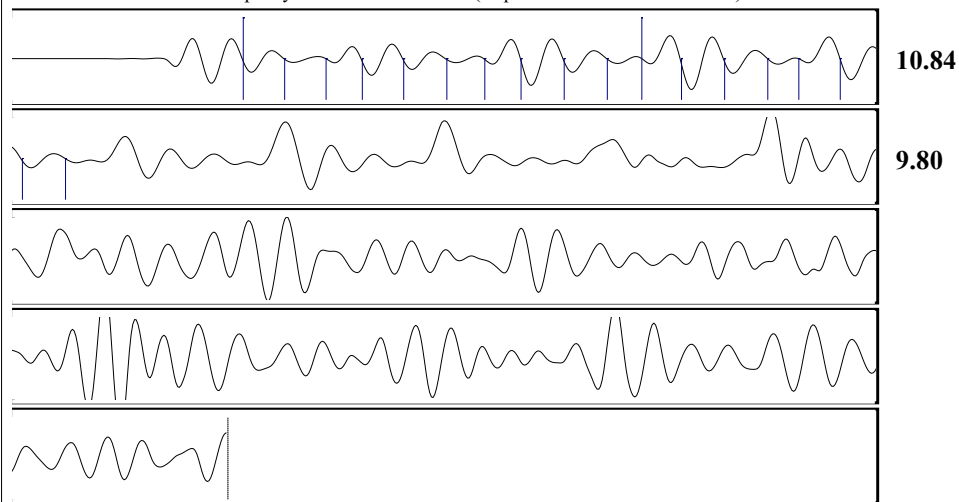


Analysis Method: Automatic



Change in Pressure -0.03 psi PT16854
 Change in Time 0.25 min Range 0 - ? psi

Production	Potential	Casing Pressure		Producing	
Current		0.9 psi (g)			
Oil - * -	- * - BBL/D	Casing Pressure Buildup		Annular Gas Flow	
Water - * -	- * - BBL/D	-0.028 psi		0 Mscf/D	
Gas - * -	- * - Mscf/D	0.25 min	% Liquid	100 %	
IPR Method	Vogel	Gas/Liquid Interface Pressure			
PBHP/SBHP	- * -	3.0 psi (g)			
Production Efficiency	0.0	Liquid Level Depth			
		2884.54 ft			
Oil 40 deg.API		Pump Intake Depth			
Water 1.05 Sp.Gr.H2O		3600.00 ft			
Gas 1.28 Sp.Gr.AIR		Formation Depth			
Acoustic Velocity 678.715 ft/s		3650.00 ft			
Formation Submergence			Pump Intake		
Total Gaseous Liquid Column HT (TVD)		715 ft	248.0 psi (g)		
Equivalent Gas Free Liquid HT (TVD)		715 ft	Producing BHP		
			270.8 psi (g)		
			Static BHP		
			- * - psi (g)		



Acoustic Velocity 678.715 ft/s Joints counted 17
 Joints Per Second 10.7053 jts/sec Joints to liquid level 90.995
 Depth to liquid level 2884.54 ft Filter Width 9.09878 13.0988
 Automatic Collar Count Yes Time to 1st Collar 0.536 2.124

Conservation Division
District Office No. 4
2301 E. 13th Street
Hays, KS 67601-2651



Phone: 785-261-6250
<http://kcc.ks.gov/>

Andrew J. French, Chairperson
Dwight D. Keen, Commissioner
Annie Kuether, Commissioner

Laura Kelly, Governor

04/29/2024

Zach Patterson
Patterson Energy LLC
PO BOX 400
HAYS, KS 67601-0400

Re: Temporary Abandonment
API 15-195-00733-00-00
COOK 9
NW/4 Sec.02-11S-21W
Trego County, Kansas

Dear Zach Patterson:

"Your temporary abandonment (TA) application for the well listed above has been approved. In accordance with K.A.R. 82-3-111 the TA status of this well will expire 04/29/2025.

- * If you return this well to service or plug it, please notify the District Office.
- * If you sell this well you are required to file a Transfer of Operator form, T-1.
- * If the well will remain temporarily abandoned, you must submit a new TA application, CP-111, before 04/29/2025.

You may contact me at the number above if you have questions.

Very truly yours,

RICHARD WILLIAMS"