

KANSAS CORPORATION COMMISSION
OIL & GAS CONSERVATION DIVISION

TEMPORARY ABANDONMENT WELL APPLICATION

OPERATOR: License# \_\_\_\_\_
Name: \_\_\_\_\_
Address 1: \_\_\_\_\_
Address 2: \_\_\_\_\_
City: \_\_\_\_\_ State: \_\_\_\_\_ Zip: \_\_\_\_\_ + \_\_\_\_\_
Contact Person: \_\_\_\_\_
Phone:( \_\_\_\_\_ ) \_\_\_\_\_
Contact Person Email: \_\_\_\_\_
Field Contact Person: \_\_\_\_\_
Field Contact Person Phone: ( \_\_\_\_\_ ) \_\_\_\_\_

API No. 15- \_\_\_\_\_
Spot Description: \_\_\_\_\_
Sec. \_\_\_\_\_ Twp. \_\_\_\_\_ S. R. \_\_\_\_\_ E \_\_\_\_\_ W
feet from \_\_\_\_\_ N / \_\_\_\_\_ S Line of Section
feet from \_\_\_\_\_ E / \_\_\_\_\_ W Line of Section
GPS Location: Lat: \_\_\_\_\_, Long: \_\_\_\_\_
Datum: \_\_\_\_\_ NAD27 \_\_\_\_\_ NAD83 \_\_\_\_\_ WGS84
County: \_\_\_\_\_ Elevation: \_\_\_\_\_ GL \_\_\_\_\_ KB
Lease Name: \_\_\_\_\_ Well #: \_\_\_\_\_
Well Type: (check one) \_\_\_\_\_ Oil \_\_\_\_\_ Gas \_\_\_\_\_ OG \_\_\_\_\_ WSW \_\_\_\_\_ Other: \_\_\_\_\_
\_\_\_\_\_ SWD Permit #: \_\_\_\_\_ ENHR Permit #: \_\_\_\_\_
\_\_\_\_\_ Gas Storage Permit #: \_\_\_\_\_
Spud Date: \_\_\_\_\_ Date Shut-In: \_\_\_\_\_

Table with 7 columns: Conductor, Surface, Production, Intermediate, Liner, Tubing. Rows include Size, Setting Depth, Amount of Cement, Top of Cement, Bottom of Cement.

Casing Fluid Level from Surface: \_\_\_\_\_ How Determined? \_\_\_\_\_ Date: \_\_\_\_\_
Casing Squeeze(s): \_\_\_\_\_ to \_\_\_\_\_ w / \_\_\_\_\_ sacks of cement, \_\_\_\_\_ to \_\_\_\_\_ w / \_\_\_\_\_ sacks of cement. Date: \_\_\_\_\_
Do you have a valid Oil & Gas Lease? \_\_\_\_\_ Yes \_\_\_\_\_ No
Depth and Type: \_\_\_\_\_ Junk in Hole at \_\_\_\_\_ Tools in Hole at \_\_\_\_\_ Casing Leaks: \_\_\_\_\_ Yes \_\_\_\_\_ No Depth of casing leak(s): \_\_\_\_\_
Type Completion: \_\_\_\_\_ ALT. I \_\_\_\_\_ ALT. II Depth of: \_\_\_\_\_ DV Tool: \_\_\_\_\_ w / \_\_\_\_\_ sacks of cement \_\_\_\_\_ Port Collar: \_\_\_\_\_ w / \_\_\_\_\_ sack of cement
Packer Type: \_\_\_\_\_ Size: \_\_\_\_\_ Inch Set at: \_\_\_\_\_ Feet
Total Depth: \_\_\_\_\_ Plug Back Depth: \_\_\_\_\_ Plug Back Method: \_\_\_\_\_

Geological Data:

Table with 4 columns: Formation Name, Formation Top, Formation Base, Completion Information. Rows 1 and 2.

UNDER PENALTY OF PERJURY I HEREBY ATTEST THAT THE INFORMATION CONTAINED HEREIN IS TRUE AND CORRECT TO THE BEST OF MY KNOWLEDGE

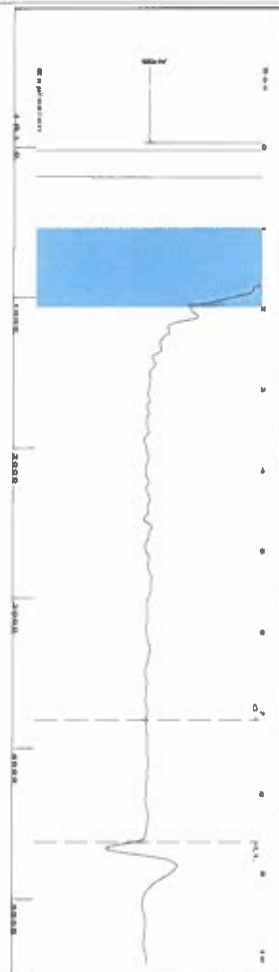
Submitted Electronically

Do NOT Write in This Space - KCC USE ONLY
Date Tested: \_\_\_\_\_ Results: \_\_\_\_\_ Date Plugged: \_\_\_\_\_ Date Repaired: \_\_\_\_\_ Date Put Back in Service: \_\_\_\_\_
Review Completed by: \_\_\_\_\_ Comments: \_\_\_\_\_
TA Approved: \_\_\_\_\_ Yes \_\_\_\_\_ Denied Date: \_\_\_\_\_

Mail to the Appropriate KCC Conservation Office:

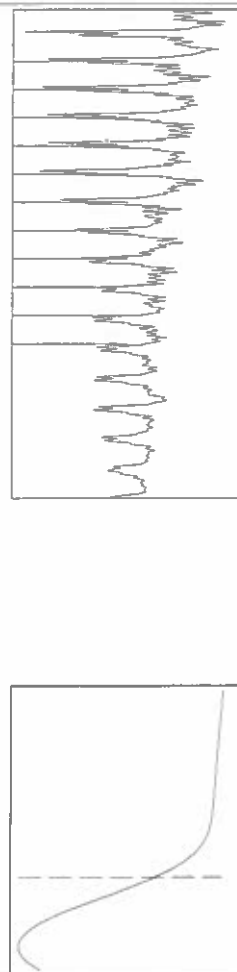
Table with 3 columns: District Office #, Address, Phone. Rows 1-4.

Group: SUBLETTE Well: Hatfield 5 (acquired on: 04/14/24 13:53:16)



Filter Type High Pass Automatic Collar Count Yes  
 Manual Acoustic Velo 1094.99 ft/s Manual JTS/sec 17.2712  
 Time 8.608 sec  
 Joints 145.813 J/s  
 Depth 4622.27 ft

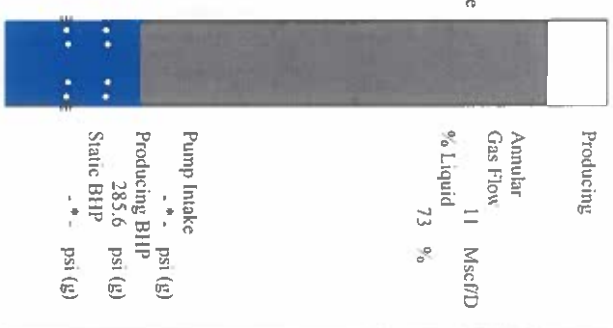
[ 1.0 to 2.0 (Sec) ]



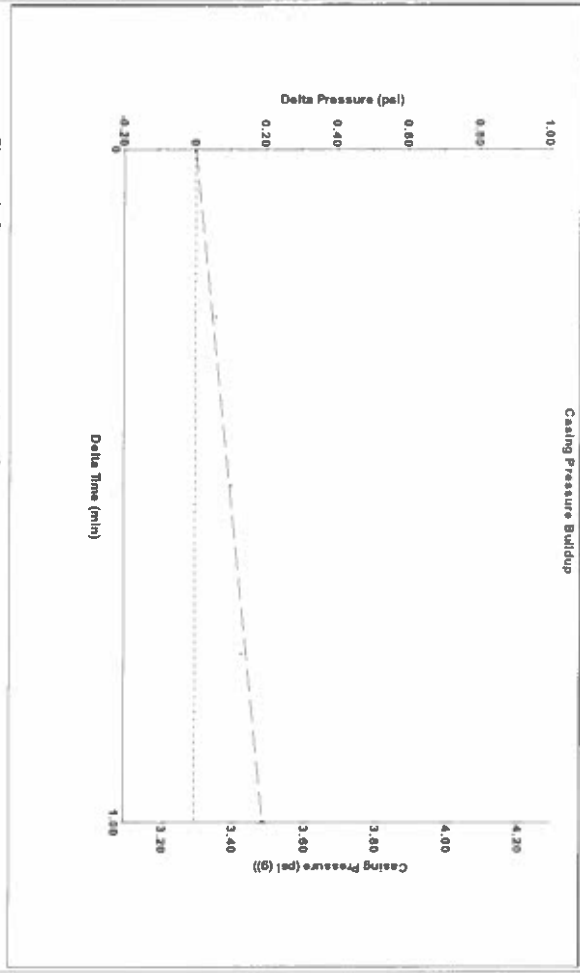
Analysis Method: Automatic

Group: SUBLETTE Well: Hatfield 5 (acquired on: 04/14/24 13:53:16)

Production	Potential	Casing Pressure	Producing
Current	Oil -*- BBL/D	3.3 psi (g)	Annular
Water -*-	Water -*- BBL/D	0.2 psi	Gas Flow
Gas -*-	Gas -*- Mscf/D	1.00 min	% Liquid
IPR Method	Vogel	Gas/Liquid Interface Pressure	Misc/D
PBHP/SBHP	Production Efficiency	6.0 psi (g)	73 %
Liquid Level Depth			
Oil 40 deg API		4622.27 ft	
Water 1.05 Sp.Gr./H2O		Pump Intake Depth	
Gas 0.91 Sp.Gr./AIR		Formation Depth	
Acoustic Velocity	1073.95 ft/s	5458.00 ft	
Formation Submergence			
Total Gaseous Liquid Column HT (TVD)		836 ft	
Equivalent Gas Free Liquid HT (TVD)		613 ft	

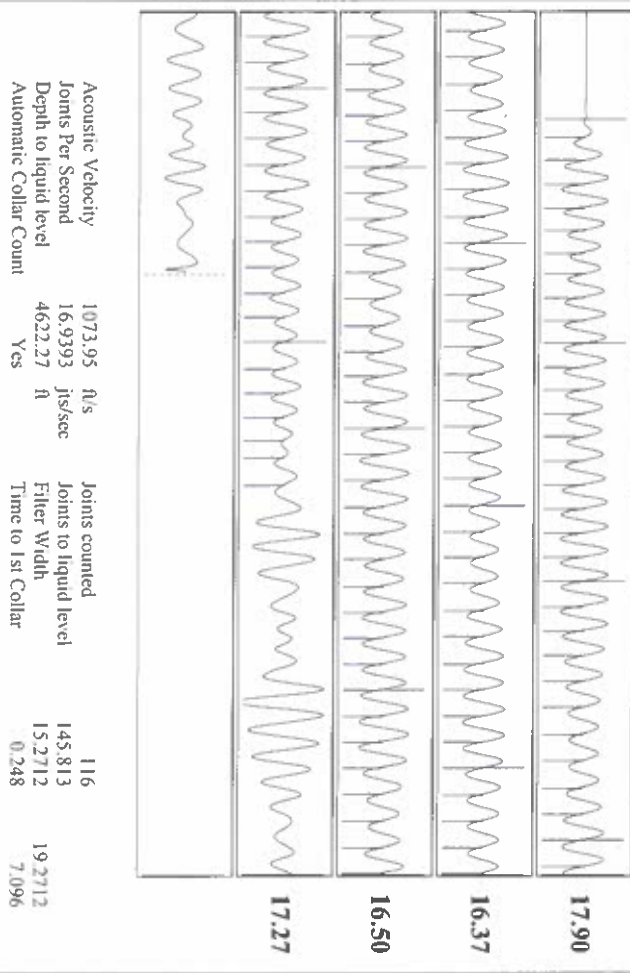


Group: SUBLETTE Well: Hatfield 5 (acquired on: 04/14/24 13:53:16)



Change in Pressure 0.19 psi PT 14679  
 Change in Time 1.00 min Range

Group: SUBLETTE Well: Hatfield 5 (acquired on: 04/14/24 13:53:16)



Acoustic Velocity 1073.95 ft/s Joints counted 116  
 Joints Per Second 16.9393 J/s/sec Joints to liquid level 145.813  
 Depth to liquid level 4622.27 ft Filter Width 15.2712  
 Automatic Collar Count Yes Time to 1st Collar 0.248

Conservation Division  
District Office No. 1  
210 E. Frontview, Suite A  
Dodge City, KS 67801



Phone: 620-682-7933  
<http://kcc.ks.gov/>

Andrew J. French, Chairperson  
Dwight D. Keen, Commissioner  
Annie Kuether, Commissioner

Laura Kelly, Governor

04/17/2024

Katherine McClurkan  
Merit Energy Company, LLC  
13727 NOEL ROAD, SUITE 1200  
DALLAS, TX 75240-7362

Re: Temporary Abandonment  
API 15-175-22112-00-01  
Hatfield, ET AL Unit 5-J22-31-33  
SE/4 Sec.22-31S-33W  
Seward County, Kansas

Dear Katherine McClurkan:

"Your temporary abandonment (TA) application for the well listed above has been approved. In accordance with K.A.R. 82-3-111 the TA status of this well will expire 04/17/2025.

- \* If you return this well to service or plug it, please notify the District Office.
- \* If you sell this well you are required to file a Transfer of Operator form, T-1.
- \* If the well will remain temporarily abandoned, you must submit a new TA application, CP-111, before 04/17/2025.

You may contact me at the number above if you have questions.

Very truly yours,

Michael Maier"