

KANSAS CORPORATION COMMISSION
OIL & GAS CONSERVATION DIVISION

TEMPORARY ABANDONMENT WELL APPLICATION

OPERATOR: License#
Name:
Address 1:
Address 2:
City: State: Zip:
Contact Person:
Phone:
Contact Person Email:
Field Contact Person:
Field Contact Person Phone:

API No. 15-
Spot Description:
Sec. Twp. S. R.
GPS Location: Lat: Long:
Datum: NAD27 NAD83 WGS84
County: Elevation:
Lease Name: Well #:
Well Type: Oil Gas OG WSW Other:
SWD Permit #: ENHR Permit #:
Gas Storage Permit #:
Spud Date: Date Shut-In:

Table with 7 columns: Conductor, Surface, Production, Intermediate, Liner, Tubing. Rows include Size, Setting Depth, Amount of Cement, Top of Cement, Bottom of Cement.

Casing Fluid Level from Surface: How Determined? Date:
Casing Squeeze(s): to w / sacks of cement, to w / sacks of cement. Date:
Do you have a valid Oil & Gas Lease? Yes No
Depth and Type: Junk in Hole at Tools in Hole at Casing Leaks: Yes No Depth of casing leak(s):
Type Completion: ALT. I ALT. II Depth of: DV Tool: w / sacks of cement Port Collar: w / sack of cement
Packer Type: Size: Inch Set at: Feet
Total Depth: Plug Back Depth: Plug Back Method:

Geological Date:

Table with 4 columns: Formation Name, Formation Top, Formation Base, Completion Information. Rows 1 and 2.

UNDER PENALTY OF PERJURY I HEREBY ATTEST THAT THE INFORMATION CONTAINED HEREIN IS TRUE AND CORRECT TO THE BEST OF MY KNOWLEDGE

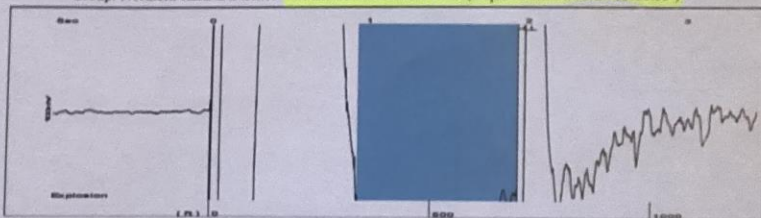
Submitted Electronically

Do NOT Write in This Space - KCC USE ONLY
Date Tested: Results: Date Plugged: Date Repaired: Date Put Back in Service:
Review Completed by: Comments:
TA Approved: Yes Denied Date:

Mail to the Appropriate KCC Conservation Office:

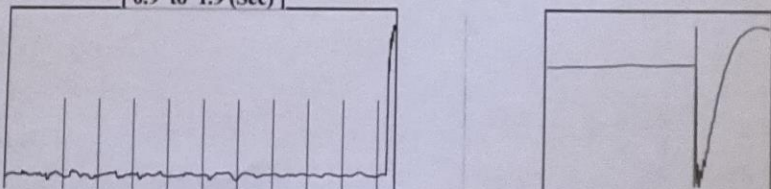
Table with 3 columns: District Office #, Address, Phone. Rows 1-4.

Group: Northern Kansas District Well: HENDERSON E - 3 (acquired on: 04/12/24 13:00:35)



Filter Type High Pass Automatic Collar Count Yes Time 1.933 sec
 Manual Acoustic Velo/722.494 ft/s Manual JTS/sec 11.1359 Joints 21.5256 Jts
 Depth 698.29 ft

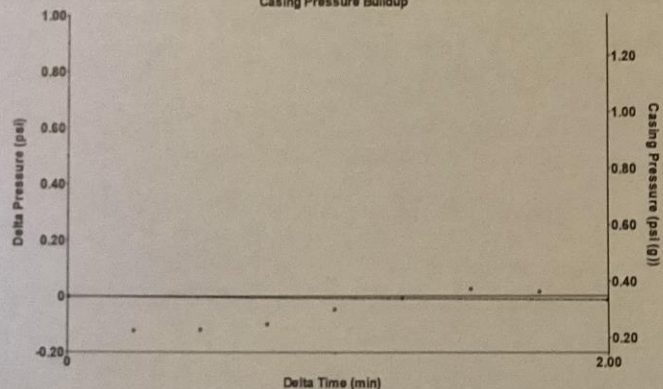
[0.9 to 1.9 (Sec)]



Analysis Method: Automatic

Group: Northern Kansas District Well: HENDERSON E - 3 (acquired on: 04/12/24 13:00:35)

Casing Pressure Buildup



Change in Pressure -0.01 psi PT 8139
 Change in Time 2.00 min Range 0 - ? psi

Group: Northern Kansas District Well: HENDERSON E - 3 (acquired on: 04/12/24 13:00:35)

Production
 Current Potential
 Oil 0.72 - * - BBL/D
 Water 299.28 - * - BBL/D
 Gas - * - - * - Mscf/D

IPR Method Vogel
 PBHP/SBHP - * -
 Production Efficiency 0.0

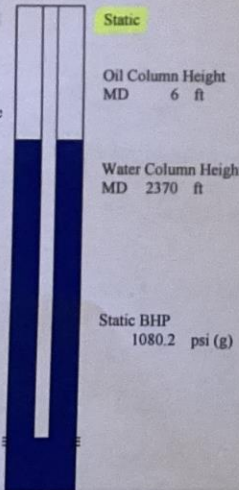
Oil 40 deg.API
 Water 1.05 Sp.Gr.H2O
 Gas 1.23 Sp.Gr.AIR

Acoustic Velocity 722.494 ft/s

Casing Pressure 0.3 psi (g)
 Casing Pressure Buildup -0.014 psi
 2.00 min
 Gas/Liquid Interface Pressure 0.8 psi (g)

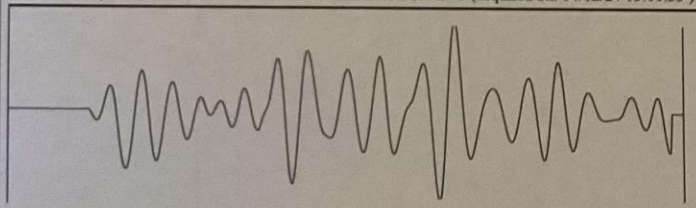
Liquid Level Depth 698.29 ft

Pump Intake Depth 3049.00 ft
 Formation Depth 3074.00 ft



Acoustic Test

Group: Northern Kansas District Well: HENDERSON E - 3 (acquired on: 04/12/24 13:00:35)



Acoustic Velocity - * - ft/s Joints counted 2
 Joints Per Second - * - jts/sec Joints to liquid level - * -
 Depth to liquid level - * - ft Filter Width 9.13586 13.1359
 Automatic Collar Count Yes Time to 1st Collar - * -

04/18/2024

Peter Fiorini
Ritchie Exploration, Inc.
8100 E 22ND ST N # 700
PO BOX 783188
WICHITA, KS 67278-3188

Re: Temporary Abandonment
API 15-051-04881-00-02
HENDERSON E 3
NE/4 Sec.22-11S-18W
Ellis County, Kansas

Dear Peter Fiorini:

"Your temporary abandonment (TA) application for the well listed above has been approved. In accordance with K.A.R. 82-3-111 the TA status of this well will expire 04/18/2025.

- * If you return this well to service or plug it, please notify the District Office.
- * If you sell this well you are required to file a Transfer of Operator form, T-1.
- * If the well will remain temporarily abandoned, you must submit a new TA application, CP-111, before 04/18/2025.

You may contact me at the number above if you have questions.

Very truly yours,

RICHARD WILLIAMS"